

FUSILIER COMMERCIAL

PARTIALLY DEVELOPED TOWNHOME / SFR / BTR SITE HARMONY, FL



Asking Price: \$895,000

- Partially Developed Townhome / SFR Site - Can be built as "Apartments" and ideal for Build-to-Rent Development
- Mass Graded - Off-Site Retention in Place - Utilities at Site
- Proposed Density: 28-30 +/- TH / MF Units - 15 +/- SFR Units
- Highschool/Middle/Elementary School are all located in community, A+ rated and the best school system in Osceola County.
- Development can utilize the Harmony Community Amenities already in place which include Multiple Pools, Parks, Playgrounds, Walking Trails and Community Marina

Incredible opportunity to purchase a Partially Developed Townhome / Single Family Site in the Harmony Master Planned Development. The Harmony community is located just south of the booming Lake Nona area in one of the busiest markets in Central Florida. The current National Builders within the Harmony Community are Pulte, D.R. Horton, Jones Homes and Lennar with almost all other National Builders have projects in the immediate area.

CHRIS PIXLEY

352.267.4244

christopher.pixley@gmail.com

FUSILIER
REALTY GROUP

STEVE FUSILIER

407.448.2733

steve@realtygroupfl.com

FUSILIER COMMERCIAL

PARTIALLY DEVELOPED TOWNHOME / SFR SITE HARMONY, FL



CHRIS PIXLEY

352.267.4244

christopher.pixley@gmail.com

FUSILIER
REALTY GROUP

STEVE FUSILIER

407.448.2733

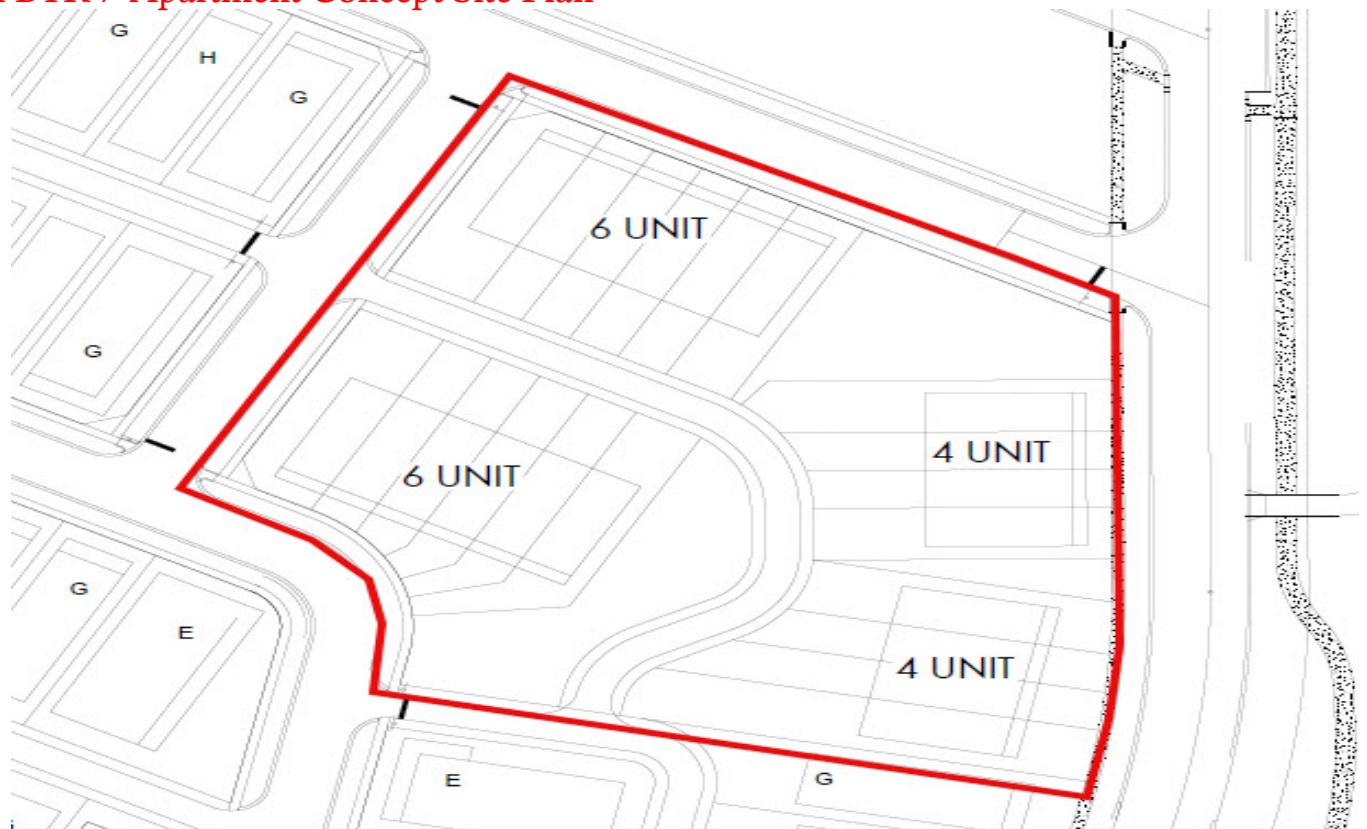
steve@realtygroupfl.com

FUSILIER COMMERCIAL

*BTR / Apartment Concept Site Plan



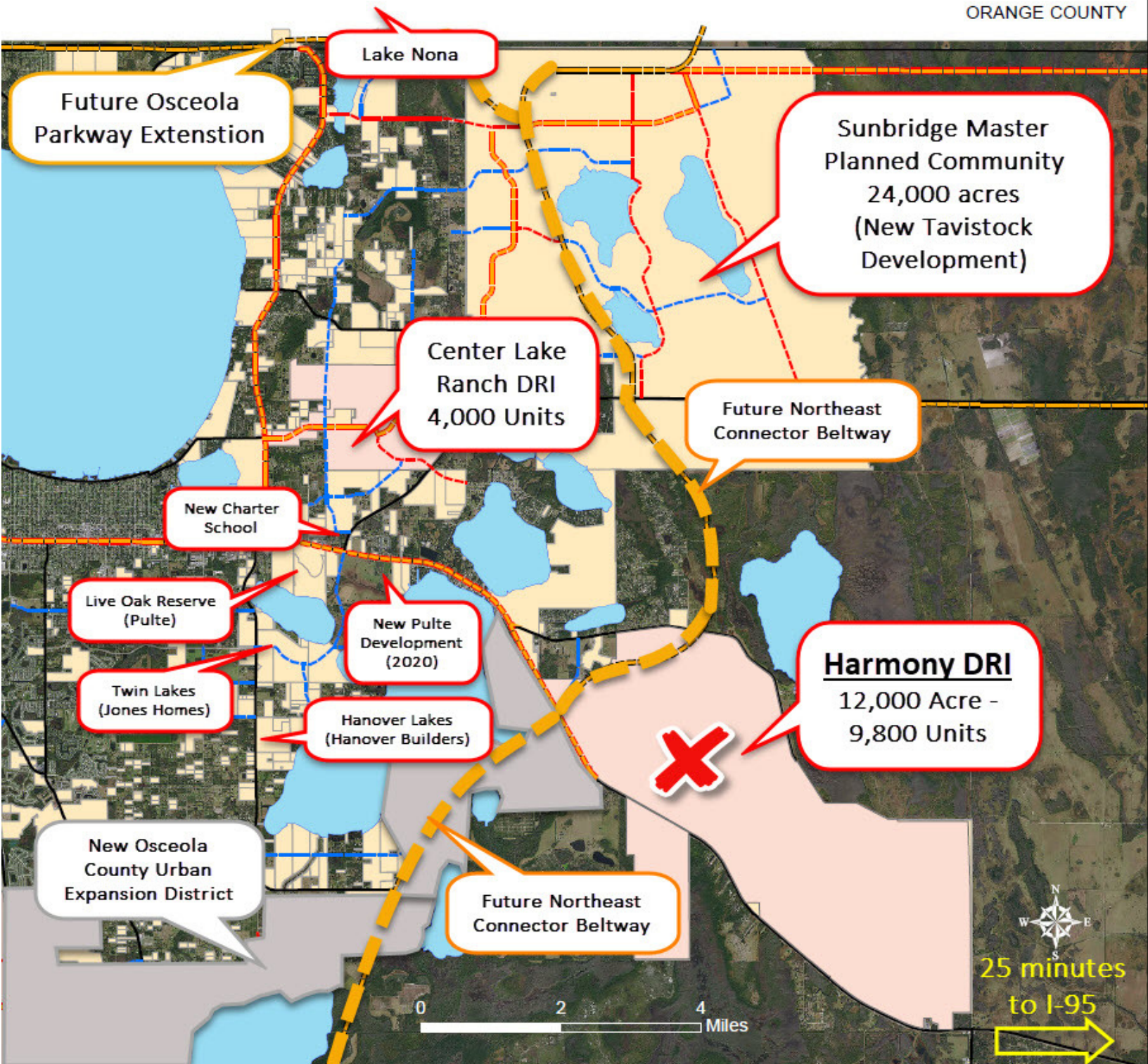
*Non BTR / Apartment Concept Site Plan



FUSILIER COMMERCIAL

PARTIALLY DEVELOPED TOWNHOME / SFR SITE HARMONY, FL

ORANGE COUNTY



CHRIS PIXLEY

352.267.4244

christopher.pixley@gmail.com

FUSILIER
REALTY GROUP

STEVE FUSILIER

407.448.2733

steve@realtygroupfl.com