



# BETHANY SOL

## COMMERCE CENTER



Exclusively Listed By:

Craig Trbovich

D 480.522.2799

M 602.549.4676

[ctrbovich@cpi.az.com](mailto:ctrbovich@cpi.az.com)



**COMMERCIAL PROPERTIES INC.**

Locally Owned. Globally Connected. CORFAC INTERNATIONAL

TEMPE: 2323 W University Drive, Tempe, AZ 85281 | 480.966.2301  
SCOTTSDALE: 8767 E Via de Commercio, Suite 101, Scottsdale, AZ 85258 | [www.cpi.az.com](http://www.cpi.az.com)





# BETHANY SOL COMMERCE CENTER

**Building Size**

±14,455 SF

**Year Built**

1986; Renovated 2020

**Lease Rate**

\$22.00 F/S Net of Jan

**1480 E Bethany Home Road  
Phoenix, AZ 85014**

## Property Amenities & Highlights

- Newly remodeled suites and restrooms
- Renovated in 2020
- Most available suites are move-in ready
- Breakrooms with sinks
- Solar Power
- Stable local ownership
- Covered parking available
- Lush landscaping with sitting areas
- Located in the Piestewa Peak Corridor
- Surrounded by other recently renovated properties
- Within walking distance to retail centers and restaurants
- Close to SR-51, I-10 and Sky Harbor Airport



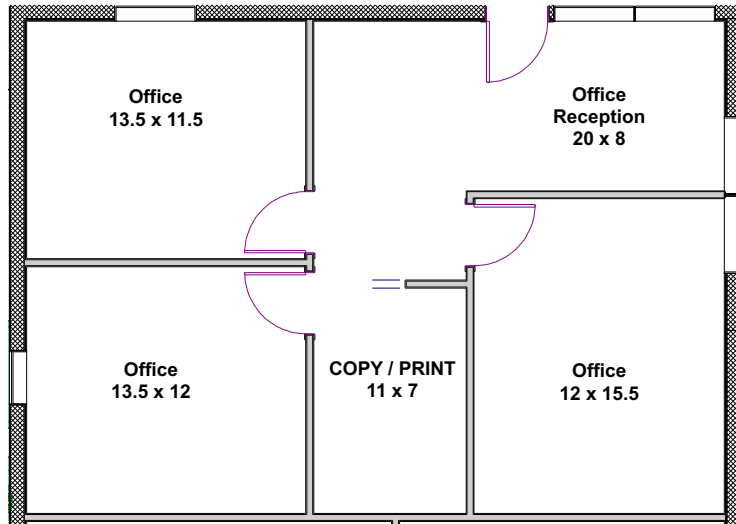


[illegible]

Locally Owned. Globally Connected. 



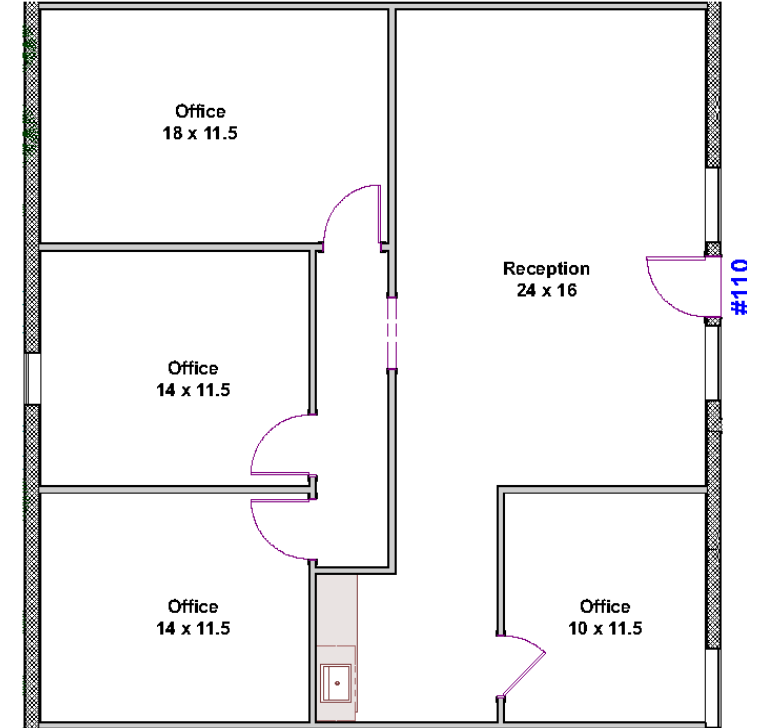
# 1<sup>st</sup> FLOOR AVAILABILITY



**Suite 100**

±868 SF | \$22.00 F/S NET of JAN

4 Offices



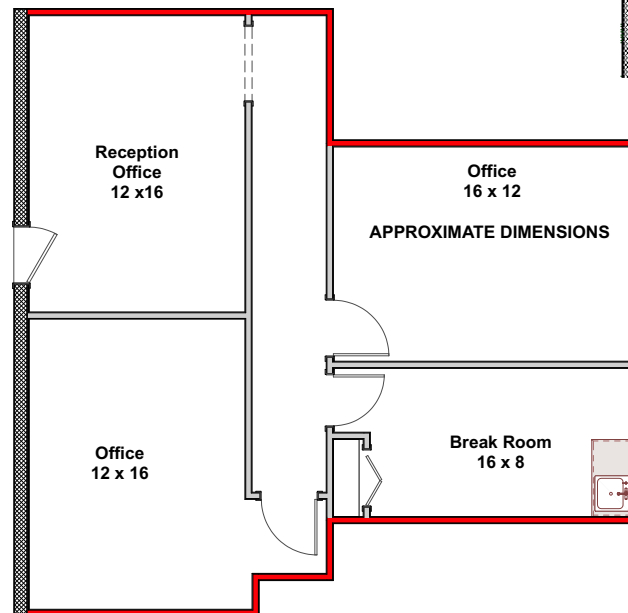
**Suite 110**

±1,299SF | \$22.00 F/S NET of JAN

Reception, 4 Offices

**Suite 125**  
±1,008 SF | \$22.00 F/S NET of JAN

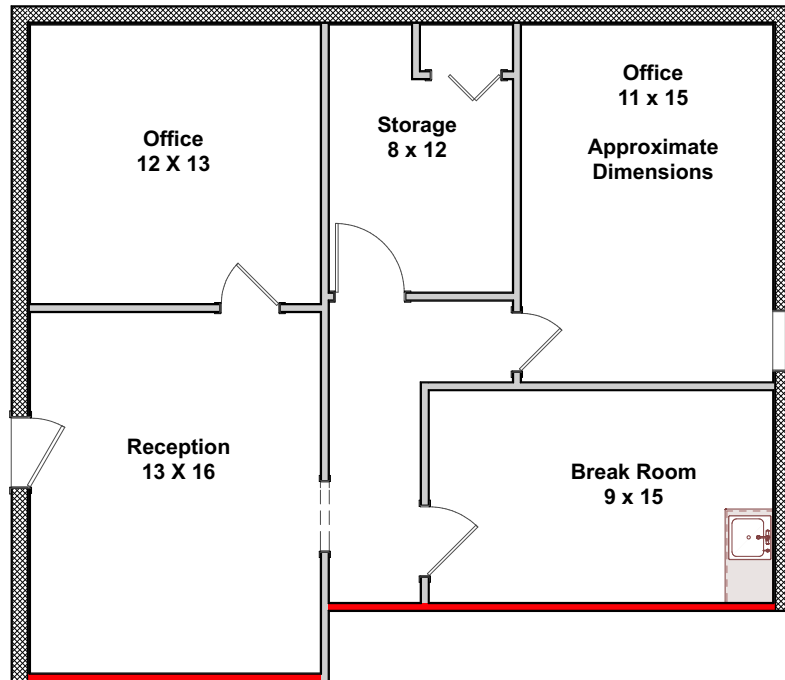
Reception, 2 Offices, and Break Room



**COMMERCIAL PROPERTIES INC.**

Locally Owned. Globally Connected. COFAC

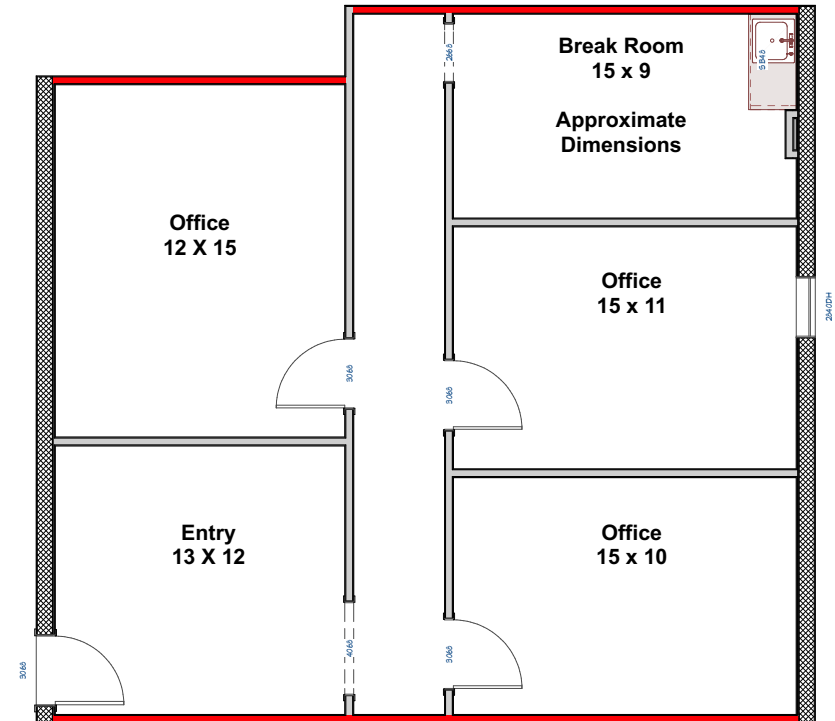
# 2<sup>nd</sup> FLOOR AVAILABILITY



## ■ Suite 200

±1,036 SF | \$22.00 F/S NET of JAN

Reception, 2 Offices, Storage Room, and Break Room



## ■ Suite 205

±950 SF | \$22.00 F/S NET of JAN

Reception, 3 Offices, and Break Room

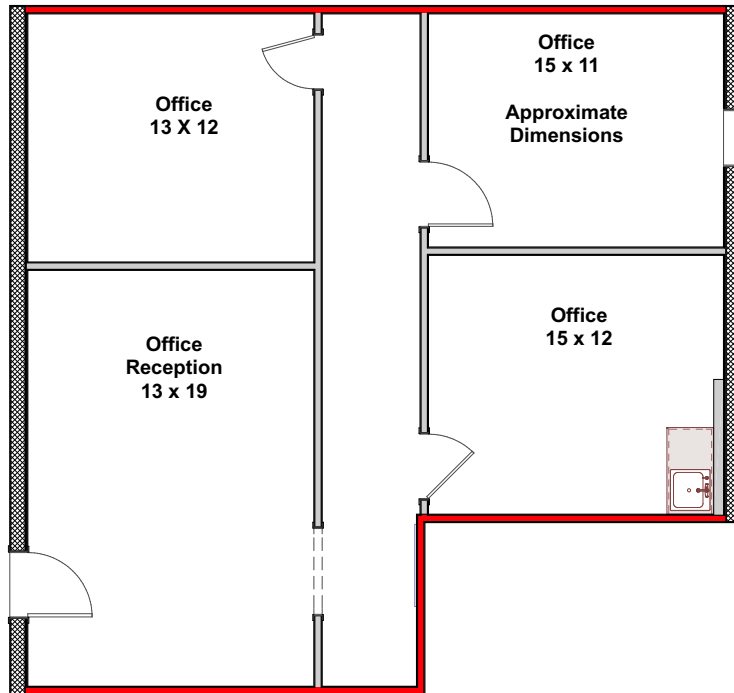


**COMMERCIAL PROPERTIES INC.**

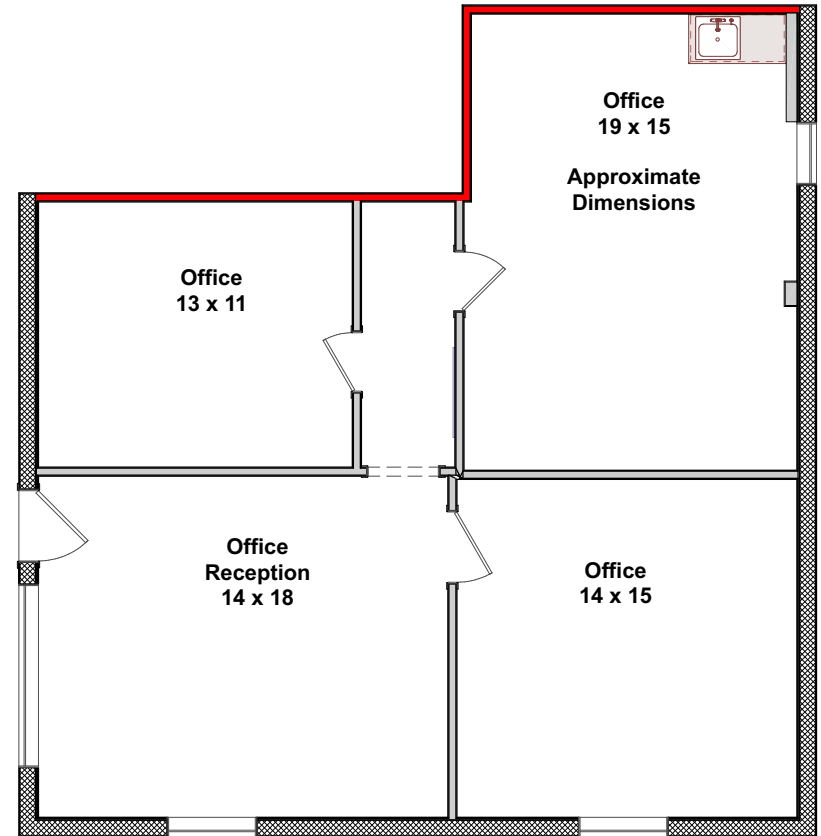
Locally Owned. Globally Connected. COFAC



# 2<sup>nd</sup> FLOOR AVAILABILITY



**Suite 210**  
±1,092 SF | \$22.00 F/S NET of JAN  
Reception, 2 Offices, Break Room



**AVAILABLE 2/1/2026**

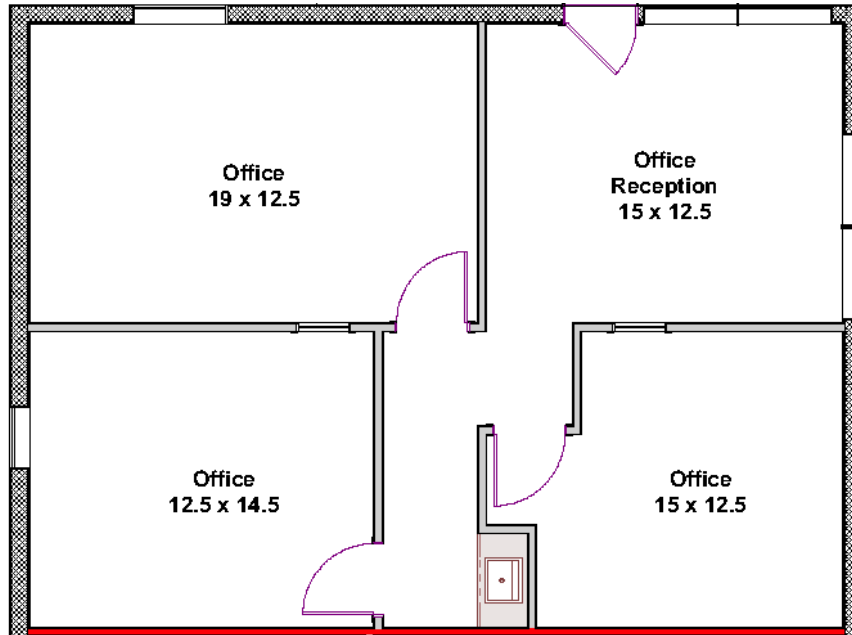
**Suite 215**  
±1,050 SF | \$22.00 F/S NET of JAN  
Reception, 3 Offices



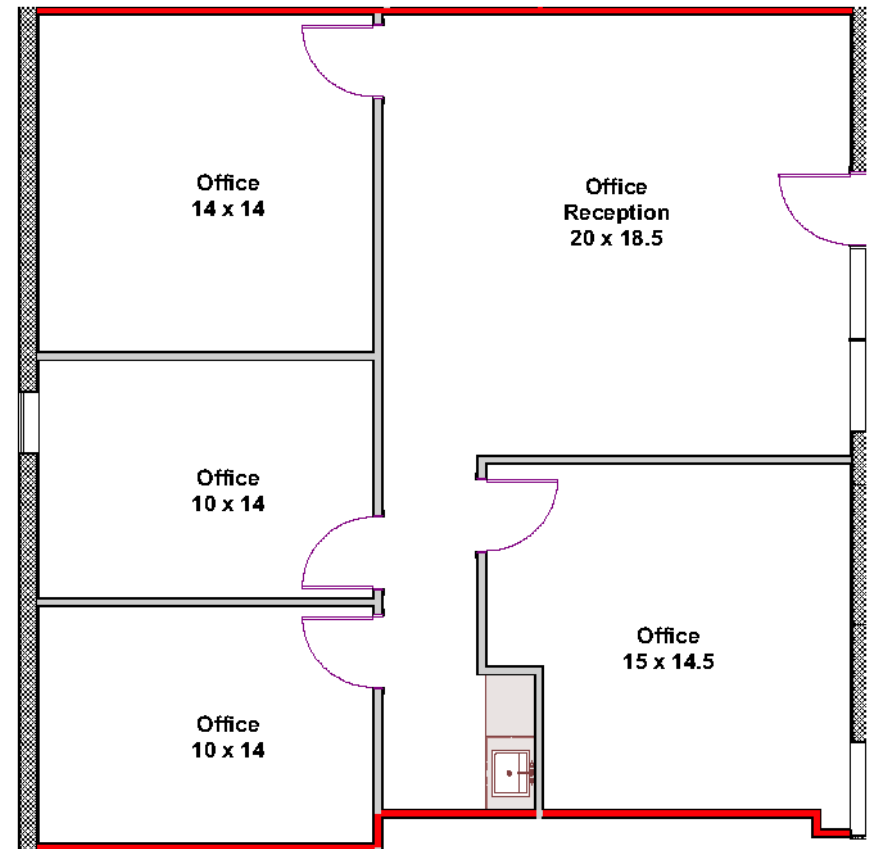
**COMMERCIAL PROPERTIES INC.**

Locally Owned. Globally Connected. COFAC

# 2<sup>nd</sup> FLOOR AVAILABILITY



■ **Suite 220**  
±922 SF | \$22.00 F/S NET of JAN  
Reception, 3 Offices



■ **Suite 230**  
±1,281 SF | \$22.00 F/S NET of JAN  
Reception, 4 Offices



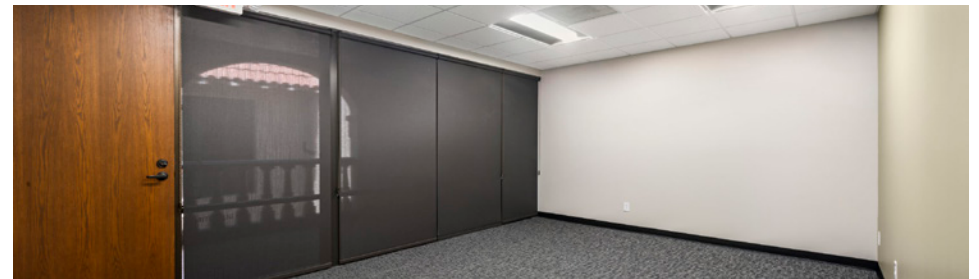
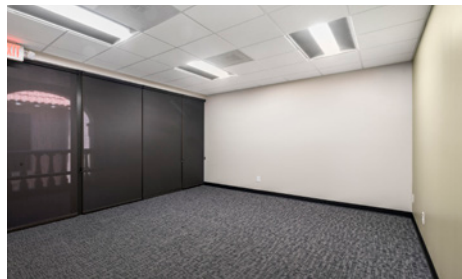
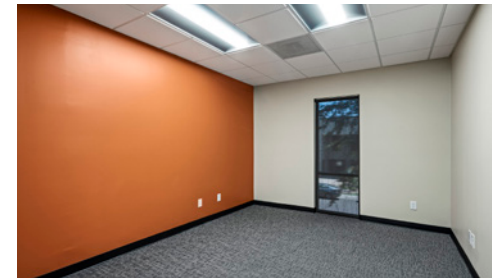
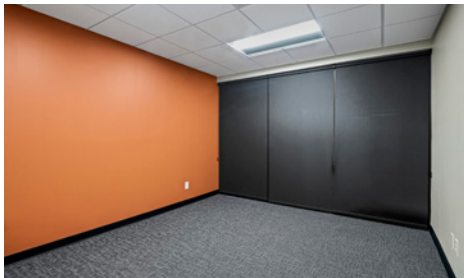
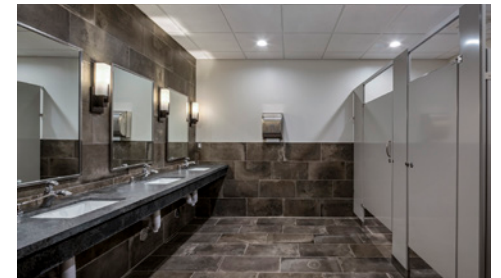


# EXTERIOR PHOTOS





# INTERIOR PHOTOS

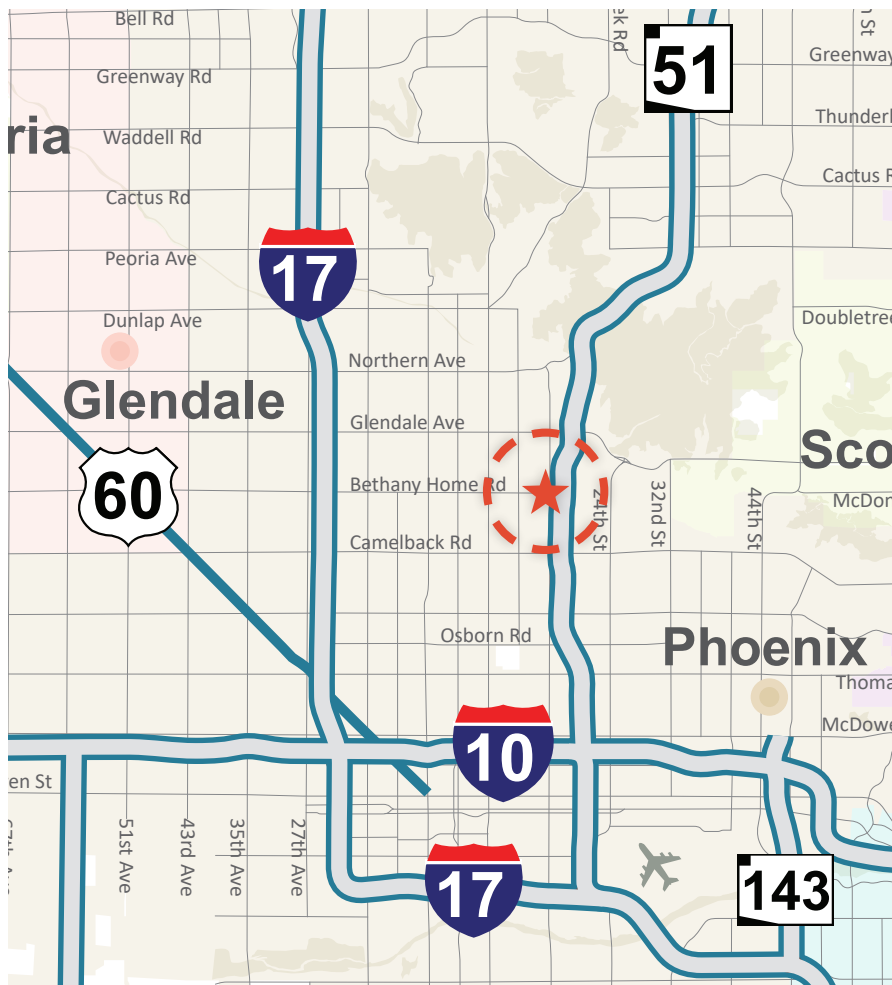






# BETHANY SOL

## COMMERCE CENTER



## DEMOGRAPHICS (1 MILE RADIUS)



\$64,129

Median Household  
Income



\$47,515

Per Capita Income



\$88,547

Median Net Worth

18,104

Population



9,236

Households

42.5

Median Age

\$54,066

Median Disposable Income



78%

White Collar



13%

Blue Collar



9%

Services

7.1%

Unemployment  
Rate



The Madrid  
Courtyard

The Willow  
Apartments



Oasis in  
The City

Sora on  
Rose



The  
Vicinity



Christ  
Church  
Anglican

The Madison  
Center for the Arts



**COMMERCIAL PROPERTIES INC.**

Locally Owned. Globally Connected. COFAC



E Bethany Home Rd

E Bethany Home Rd

N 12th St

N 16th St







# BETHANY SOL COMMERCE CENTER

Exclusively Listed By:

Craig Trbovich

D 480.522.2799

M 602.549.4676

ctrbovich@cpiaz.com



**COMMERCIAL PROPERTIES INC.**

Locally Owned. Globally Connected. CORFAC  
INTERNATIONAL

The information contained herein has been obtained from various sources. We have no reason to doubt its accuracy; however, J & J Commercial Properties, Inc. has not verified such information and makes no guarantee, warranty or representation about such information. The prospective buyer or lessee should independently verify all dimensions, specifications, floor plans, and all information prior to the lease or purchase of the property. All offerings are subject to prior sale, lease, or withdrawal from the market without prior notice.

01 6 26