



2315 SILVERNAIL ROAD, PEWAUKEE, WI

SUBLEASE AVAILABLE



PROPERTY INFORMATION

Discover the ideal location for your business at 2315 Silvernail Road, where a 1,250-square-foot retail suite is now available for sublease. Positioned in a bustling retail corridor, this space offers exceptional exposure and accessibility, making it perfect for medical, retail, or service-oriented providers. Benefit from building facade signage and a spot on a prominent monument sign, ensuring high visibility that captures the attention of passersby. Additionally, the suite features ample unreserved parking, enhancing convenience for both customers and staff.

Situated in a vibrant commercial area surrounded by shopping, dining, and auto-care amenities, this location guarantees constant foot traffic and easy access—a significant advantage for any business looking to thrive. Whether expanding or establishing a new presence, this space is tailored to help you succeed. Contact us today to learn more about this prime leasing opportunity or to schedule a viewing. Secure your spot in a location where your business can flourish!

2315 SILVERNAIL ROAD
PEWAUKEE, WI

BUILDING DETAILS

Size	1,250 SF
Term	Through 8/31/26
Lease rate	\$19.50 SF/Gross
Signage	Building facade and monument
Parking	Ample unreserved, free parking



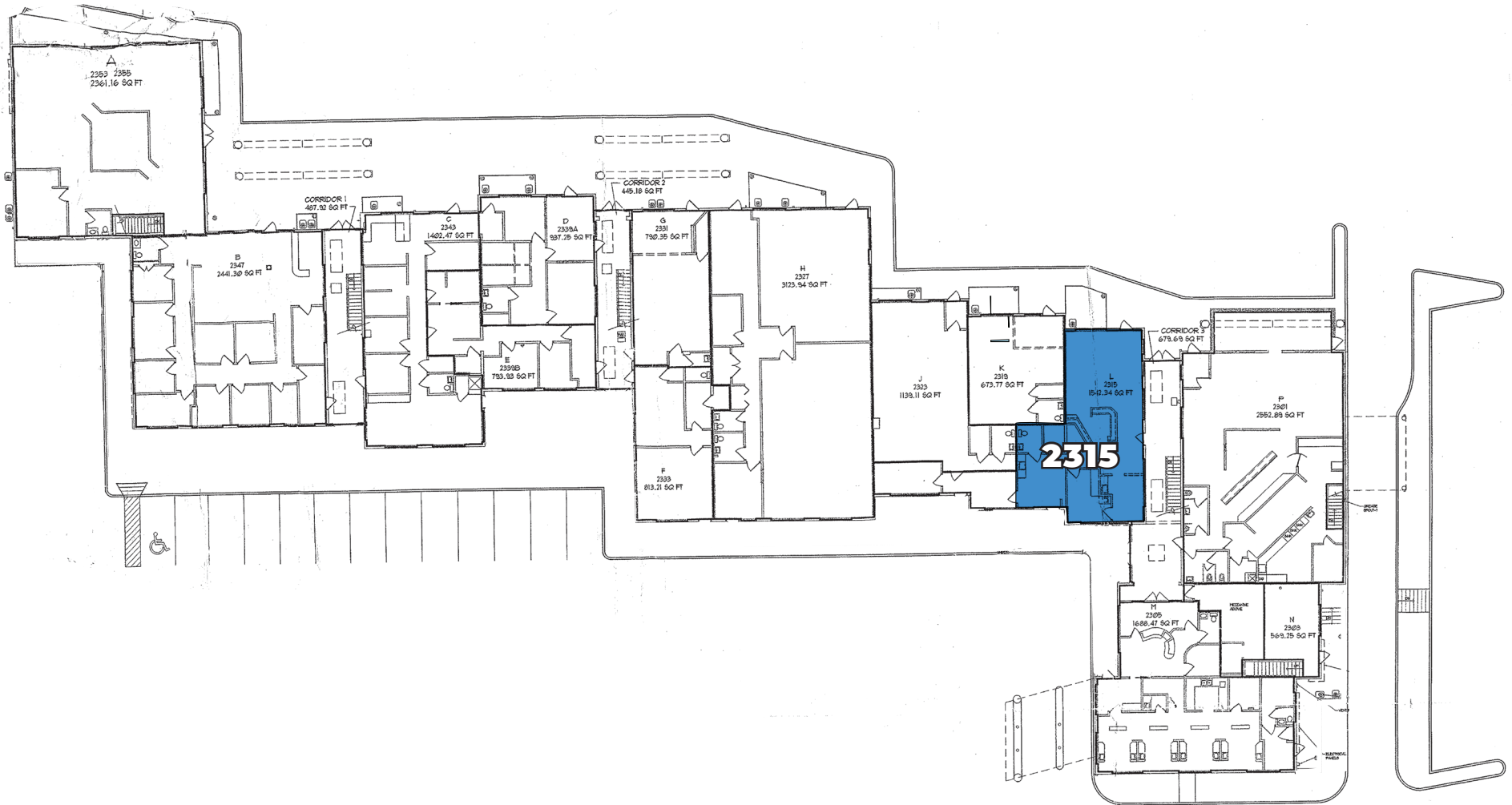
PROPERTY PHOTOGRAPHS

2315 SILVERNAIL ROAD
PEWAUKEE, WI



LOCATION

2315 SILVERNAIL ROAD
PEWAUKEE, WI



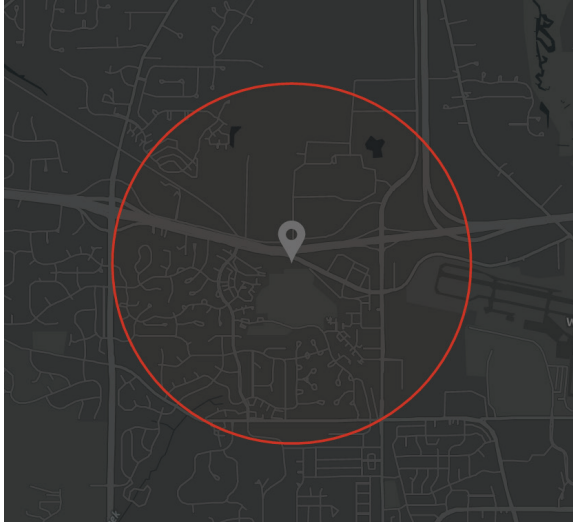
NEARBY RETAIL

2315 SILVERNAIL ROAD
PEWAUKEE, WI



DEMOGRAPHICS - 1 MILE

2315 SILVERNAIL ROAD
PEWAUKEE, WI



KEY FACTS

38.3

Median Age

6,429

Population

3,005

Households

\$67,136

Median Disposable Income

EMPLOYMENT



71.8% White Collar



18.3% Blue Collar



14.6% Services

0.4%

Unemployment Rate

EDUCATION

1.8%

No High School Diploma

16.5%

High School Graduate

31.3%

Some College

50.4%

Bachelor's/ Grad/Prof Degree

INCOME



\$84,492

Median Household Income



\$48,408

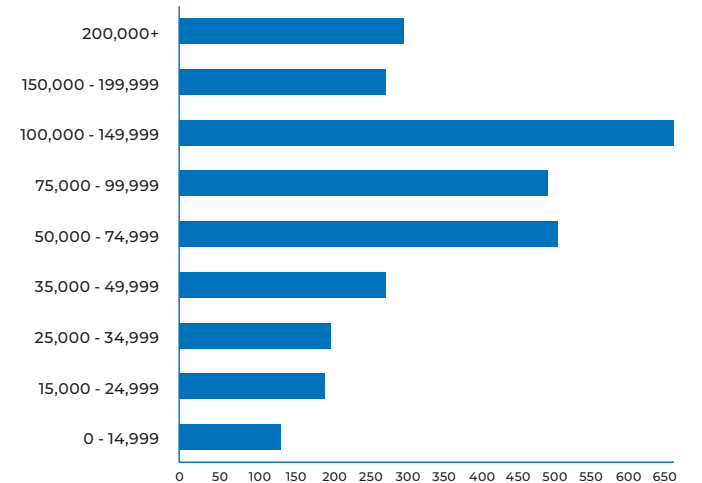
Per Capita Income



\$198,437

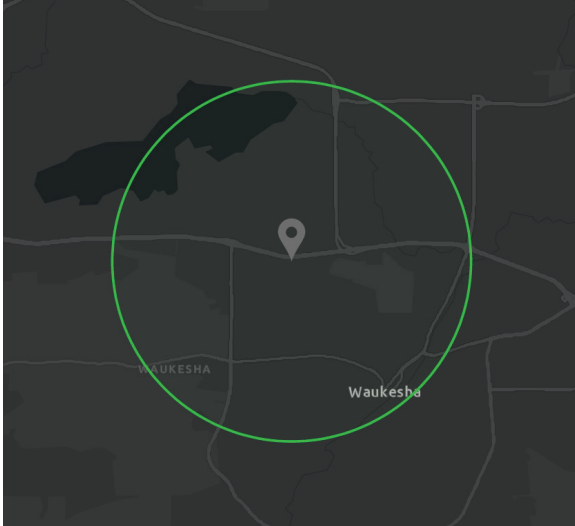
Median Net Worth

HOUSEHOLD INCOME



DEMOGRAPHICS - 3 MILE

2315 SILVERNAIL ROAD
PEWAUKEE, WI



KEY FACTS

41.4

Median Age

45,035

Population

19,839

Households

\$62,017

Median Disposable Income

EMPLOYMENT



2.1%

Unemployment Rate

EDUCATION

4.0%

No High School Diploma

20.5%

High School Graduate

29.3%

Some College

46.2%

Bachelor's/ Grad/Prof Degree

INCOME



\$78,702

Median Household Income



\$46,963

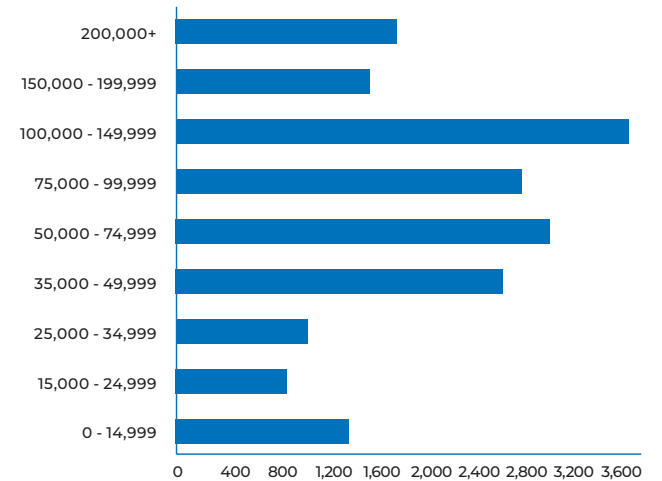
Per Capita Income



\$178,318

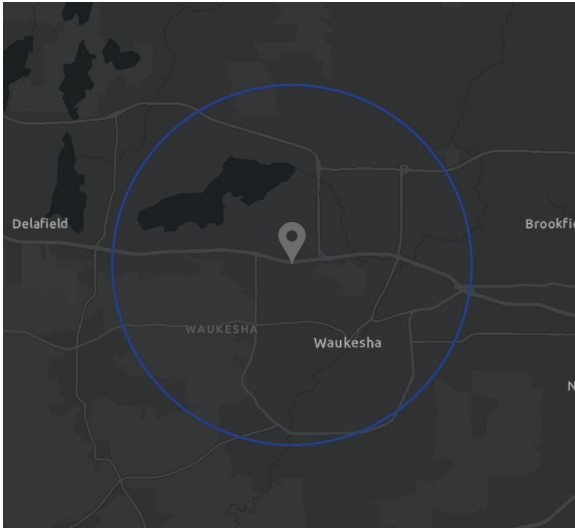
Median Net Worth

HOUSEHOLD INCOME



DEMOGRAPHICS - 5 MILE

2315 SILVERNAIL ROAD
PEWAUKEE, WI



KEY FACTS

40.7

Median Age

109,468

Population

46,578

Households

\$64,711

Median Disposable Income

EMPLOYMENT



2.1%

Unemployment Rate

EDUCATION

4.5%

No High School Diploma

20.1%

High School Graduate

28.7%

Some College

46.8%

Bachelor's/ Grad/Prof Degree

INCOME



\$81,192

Median Household Income



\$47,294

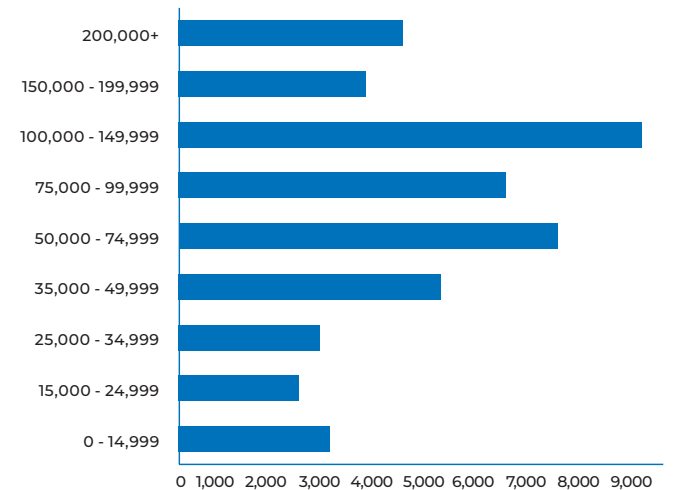
Per Capita Income



\$206,289

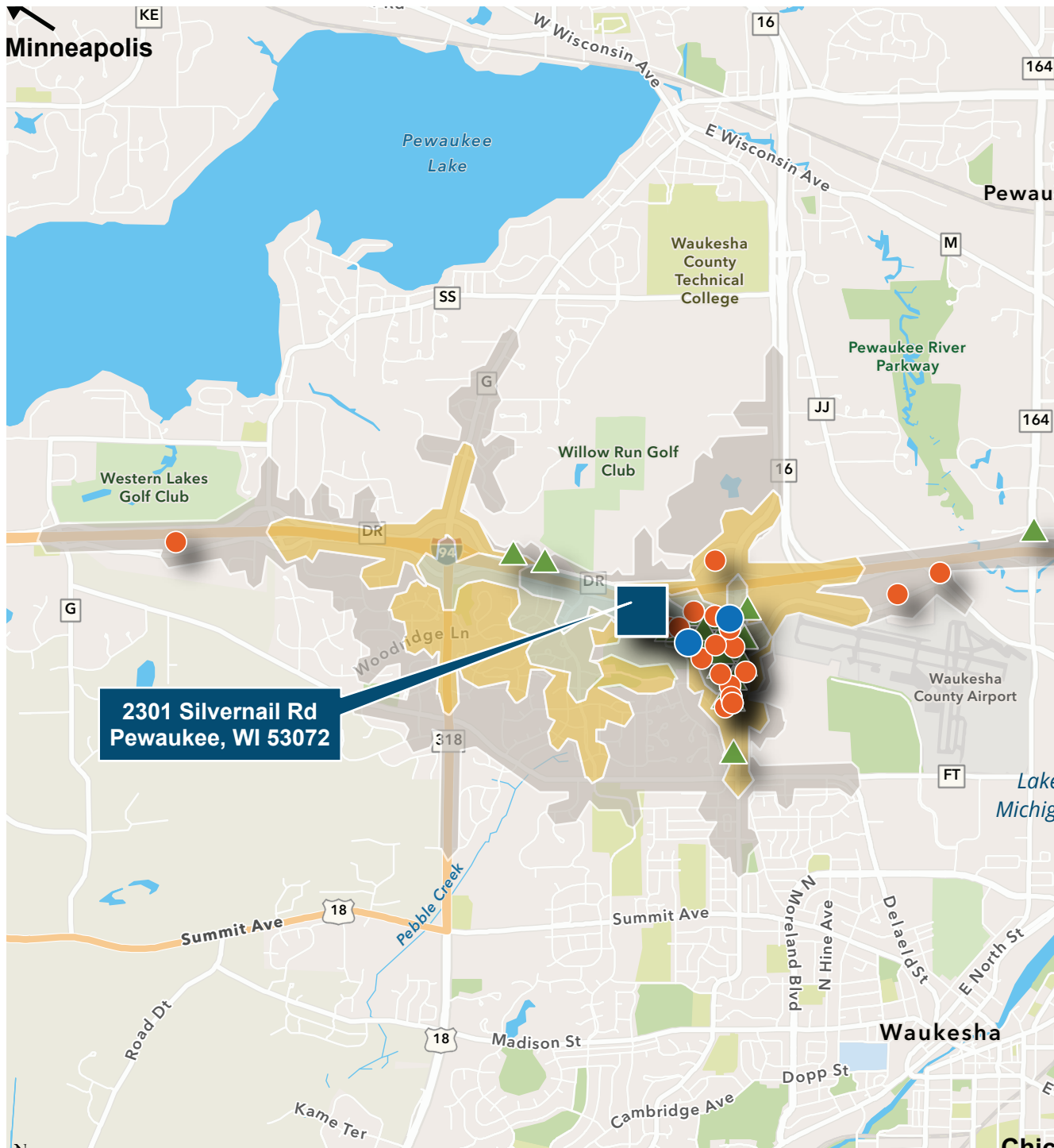
Median Net Worth

HOUSEHOLD INCOME



DRIVE TIMES

2315 SILVERNAIL ROAD
PEWAUKEE, WI



DRIVE TIMES

- ≤ 1 Minute
- ≤ 2 Minutes
- ≤ 3 Minutes
- ≤ 4 Minutes
- ≤ 5 Minutes

AREA AMENITIES

(within driving distances)

- ▲ Restaurants & Bars (26)
- Retail Shops (79)
- Lodging facilities (2)

2315 Silvernail Rd
Pewaukee, WI 53072



The information provided herein was obtained from sources believed reliable; however, Transwestern makes no guarantees, warranties or representations as to the completeness or accuracy thereof. The presentation of this property is submitted subject to errors, omissions, change of price or conditions, prior sale or lease, or withdrawal without notice.
Copyright © 2024 Transwestern.



TRANSWESTERN

REAL ESTATE
SERVICES



SHAUN DEMPSEY

Executive Vice President

D 414.270.4104

M 414.699.7674

shaun.dempsey@transwestern.com

310 W. Wisconsin Ave., Ste. ME110
Milwaukee, WI 53203

*All information is furnished from sources judged to be reliable; however,
no guarantee is made as to its accuracy or completeness.*