

WH RC Commercial

Div. of
Welcome Home Realty Group

LAND AVAILABLE - FOR LEASE OR SALE
FLETCHER'S GROVE - PHASE II
CHASE SIX BOULEVARD, TIGER WAY, AND RINGLEY DRIVE

Lot 4
.88 acres

Lot 3
1.76 acres

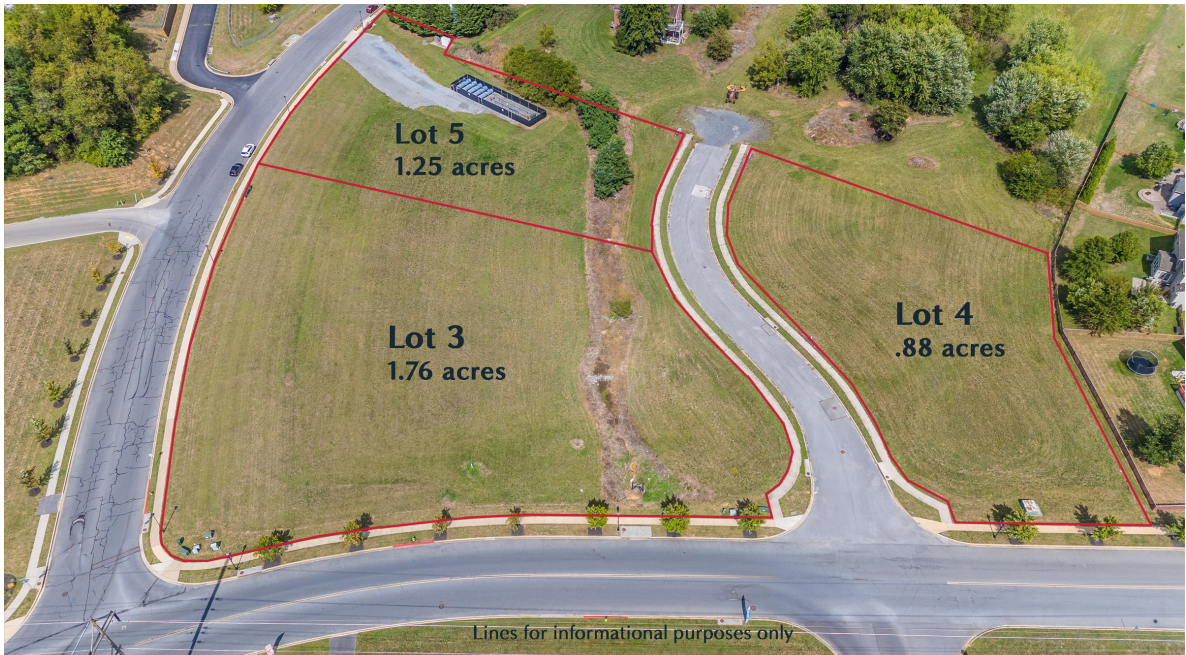
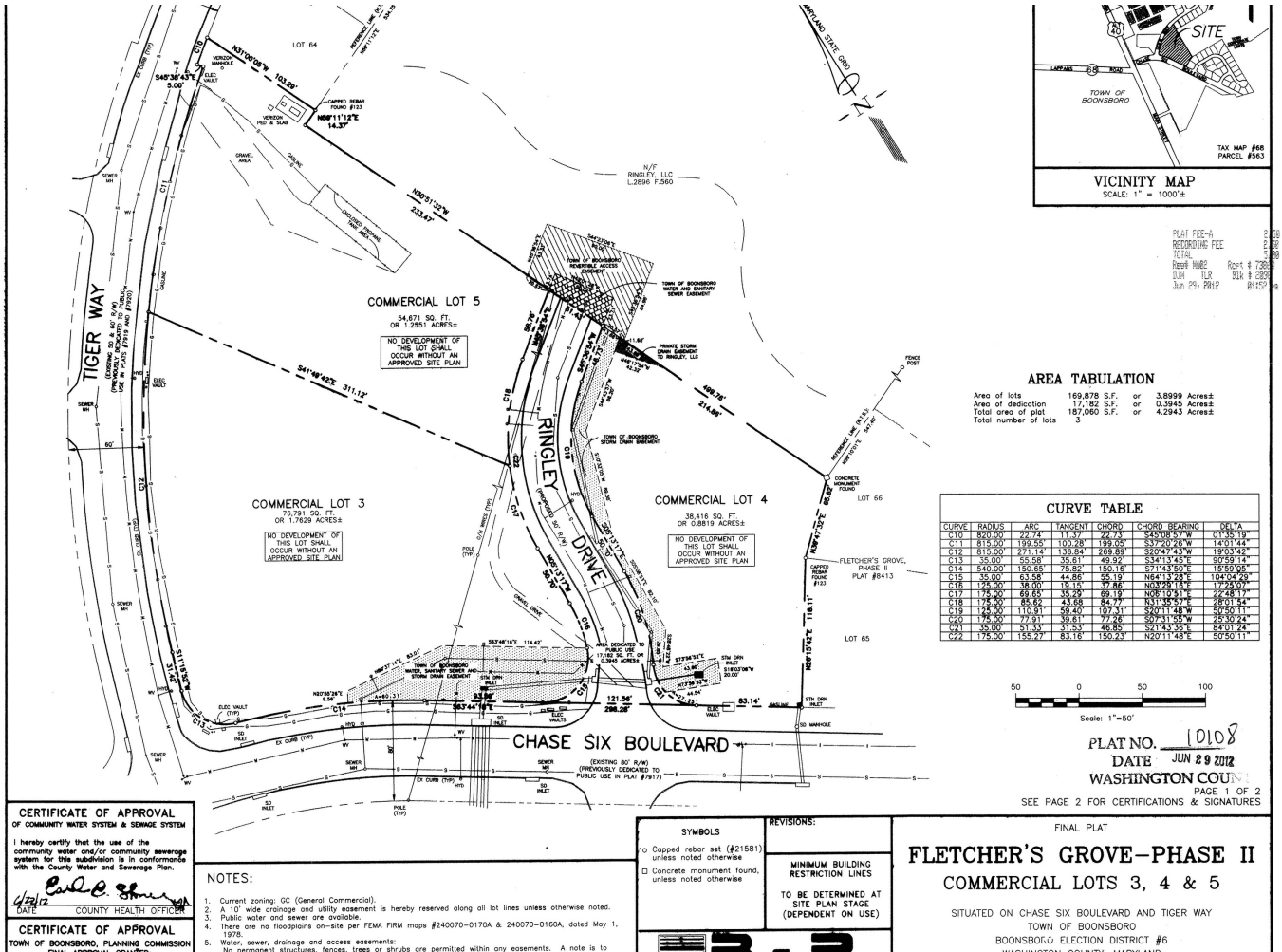
Lot 5
1.25 acres

LINES FOR INFORMATIONAL PURPOSES ONLY



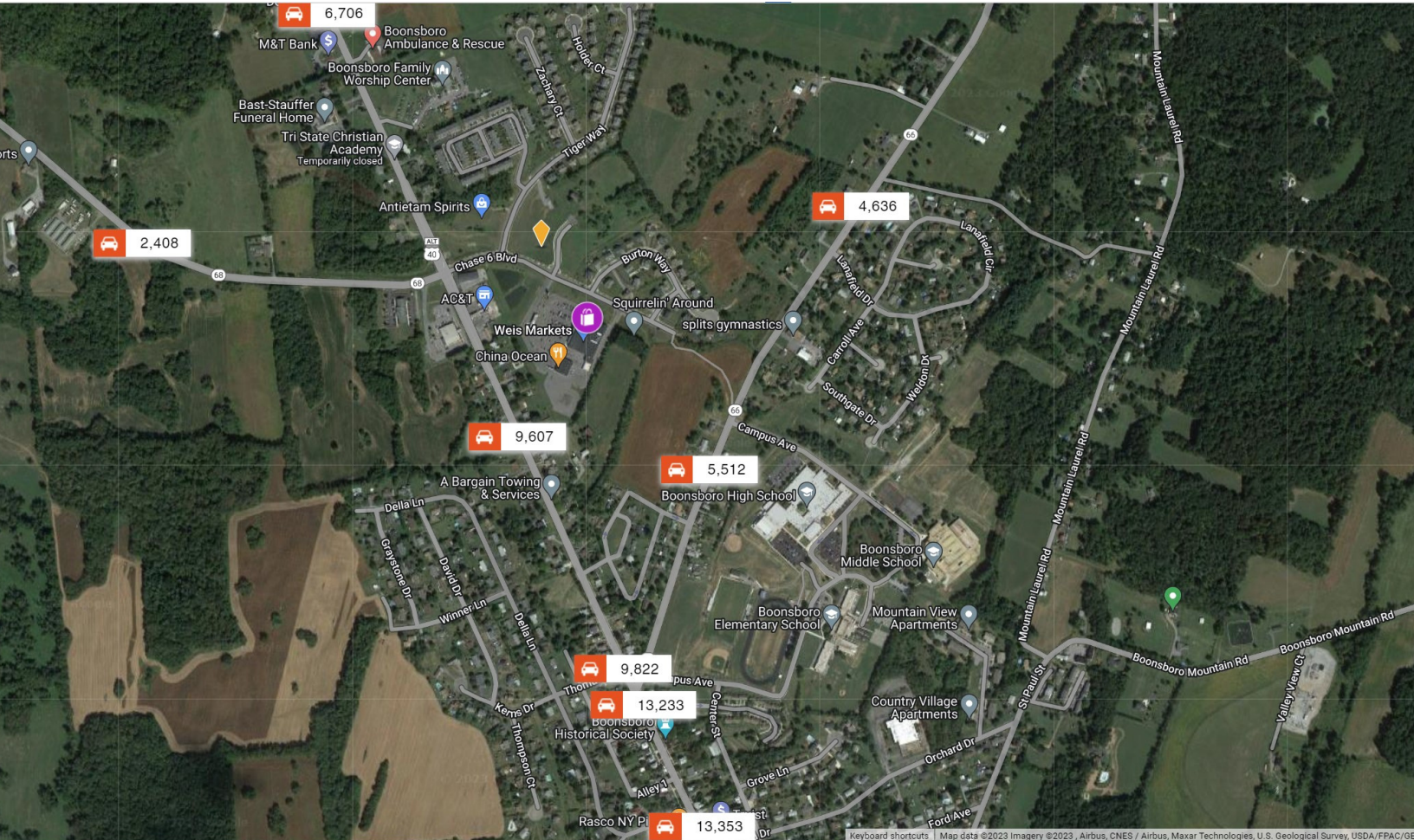
TONY LASCOLA / DIRECT - 301-788-3804
224 E. PATRICK ST. FREDERICK MD - 301-228-2988

FLETCHER'S GROVE - PHASE II



TONY LASCOLA / DIRECT - 301-788-3804
224 E. PATRICK ST. FREDERICK MD - 301-228-2988

FLETCHER'S GROVE - PHASE II



DEMOGRAPHICS FOR 2023

	1 MILE	3 MILE	5 MILE
POPULATION ESTIMATE	2,635	7,585	16,807
AVG. HOUSEHOLD INCOME	\$98,097	\$108,457	\$119,275
MED. HOUSEHOLD INCOME	\$89,898	\$101,720	\$106,635

ESTIMATED DISTANCE:

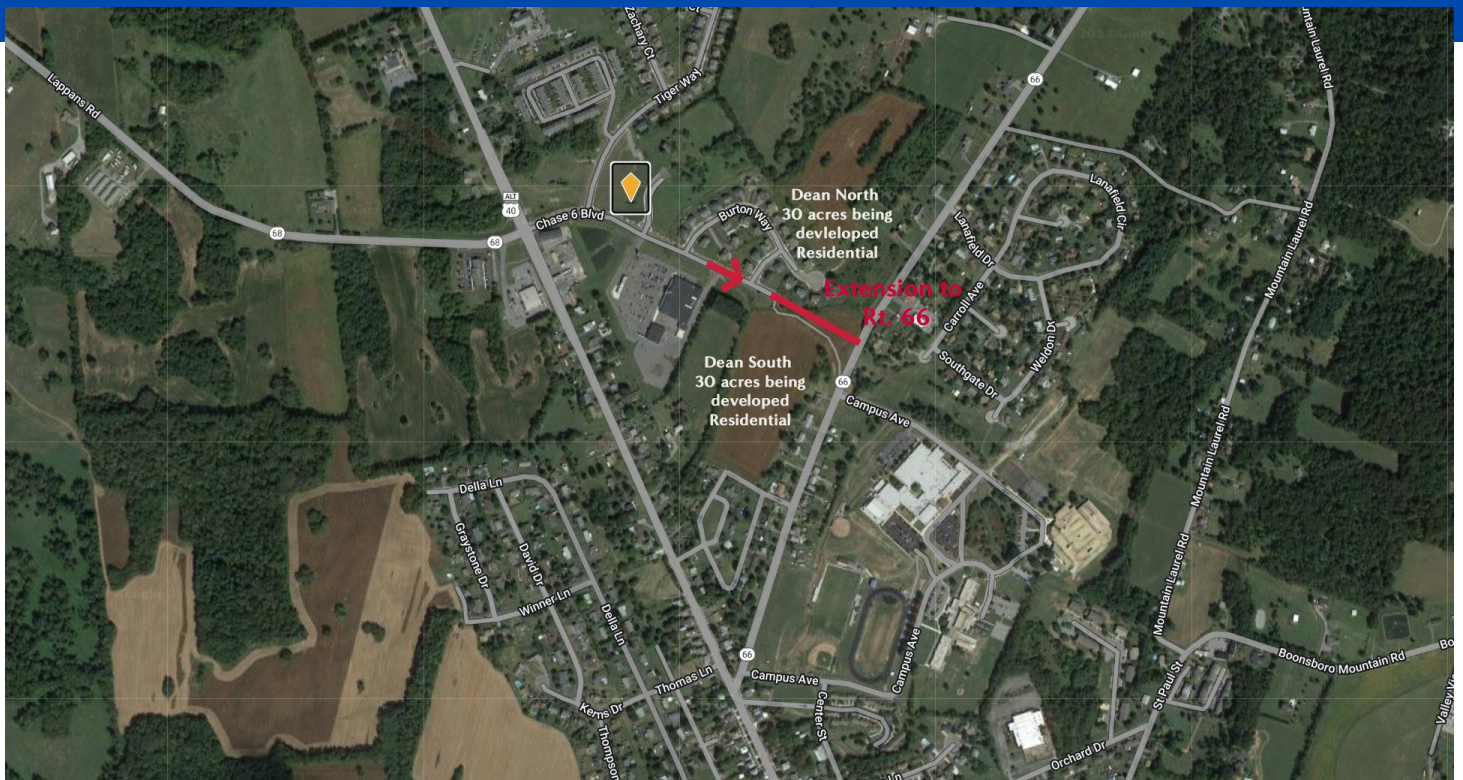
- ALT 40: .2 MILES
- ROUTE 66: .8 MILES
- ROUTE 40: 5 MILES
- ROUTE 70: 8 MILES

TONY LASCOLA / DIRECT - 301-788-3804
 224 E. PATRICK ST. FREDERICK MD - 301-228-2988

FLETCHER'S GROVE - PHASE II



APROVED FURTURE ROAD EXTENSION CHASE SIX BLVD. TO ROUTE 66



TONY LASCOLA / DIRECT - 301-788-3804
224 E. PATRICK ST. FREDERICK MD - 301-228-2988

WH RG

Commercial

Div. of
Welcome Home Realty Group



TONY LASCOLA COO/PARTNER

Licensed in Maryland and Virginia

Office: 301.228.2988

Direct: 301.788.3804

Tony@WelcomeHomeFrederick.com

TERRY LASCOLA BROKER/PARTNER

Licensed in Maryland, Virginia, and PA

Office: 301.228.2988

Direct: 240.674.8757

Terry@WelcomeHomeFrederick.com



www.WelcomeHomeFrederick.com/commercial