

ROW REV. #1: SPLIT PARCEL 87 INTO 87A AND 87B. 03/23/2020 SS.

ROW REV. #2: REVISED ROW STATION FLAG ON PARCEL 87A +90 & +10 -L- REVISED TCE ON PARCEL 80 & 89 FOR EC DEVICE 2/16/2021 SS

ROW REV. #3: ADDED DRIVE ON PARCEL 80 & 89 1/25/2022 SS

ROW REV. #4: REVISED SLOPES, ADD NOTE, REDUCED BERM TO REDUCE IMPACTS TO SEPTIC FIELD ON PARCEL 81 & 83 4/22/2022 SS

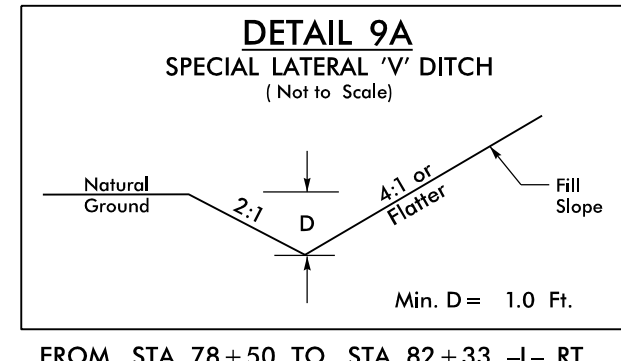
ROW REV. #7: REDUCED BERM WIDTH TO MINIMIZE IMPACTS TO SEPTIC FIELD ON PARCEL 81 and 83. ADJUSTED TCE ON PARCELS 81, 82 & 83 12/22/2022 SS

8.17/99

MATCHLINE -L- STA. 78 + 50.00 SEE SHEET 8

-L-
PI Sta 82+92.82
$\Delta = 7' 17" 54.7" (LT)$
$D = 1' 09" 35.4"$
$L = 629.27'$
$T = 315.06'$
$R = 4,940.00'$
SE = SEE PLANS
DS = 50 MPH

-Y13-
PI Sta 13+93.31
$\Delta = 12' 03" 38.7" (LT)$
$D = 2' 51" 53.2"$
$L = 421.00'$
$T = 211.28'$
$R = 2,000.00'$

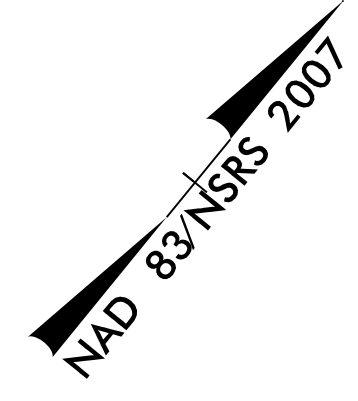
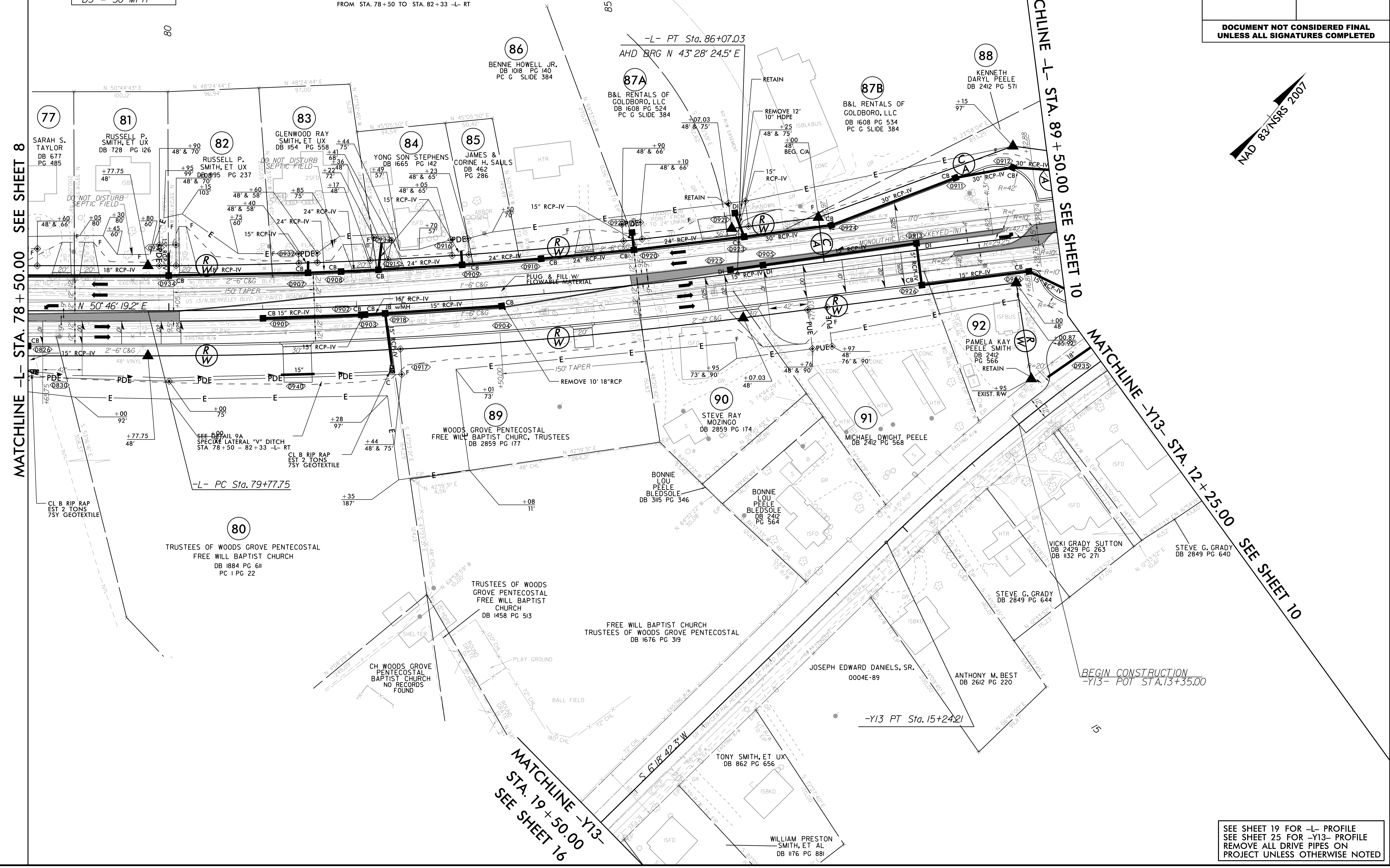


FROM STA. 78+50 TO STA. 82+33 -L- RT



Stantec Consulting Services Inc.
801 Jones Franklin Road
Suite 300
Raleigh, NC 27606
Tel. (919) 851-6866
Fax. (919) 851-7024
www.stantec.com
License No. F-0672

PROJECT REFERENCE NO.	SHEET NO.
U-3609B	9
ROADWAY DESIGN ENGINEER	HYDRAULICS ENGINEER
DOCUMENT NOT CONSIDERED FINAL UNLESS ALL SIGNATURES COMPLETED	



MATCHLINE -L- STA. 78 + 50.00 SEE SHEET 8

MATCHLINE -L- STA. 89 + 50.00 SEE SHEET 10

MATCHLINE -Y13- STA. 12 + 25.00 SEE SHEET 10

MATCHLINE -Y13- STA. 19 + 50.00 SEE SHEET 16

SEE SHEET 19 FOR -L- PROFILE
SEE SHEET 25 FOR -Y13- PROFILE
REMOVE ALL DRIVE PIPES ON PROJECT UNLESS OTHERWISE NOTED

ROW REVISION #2: REVISED PDE & TCE STATION FLAG ON PARCEL 100, 101, & 102 -L- SS 2/16/2021

8.17/99



MI ENGINEERING
1011 SCHAUJ DRIVE, SUITE 100
RALEIGH, NC 27606
(919) 851-6868
FIRM PE NUMBER: P-0671

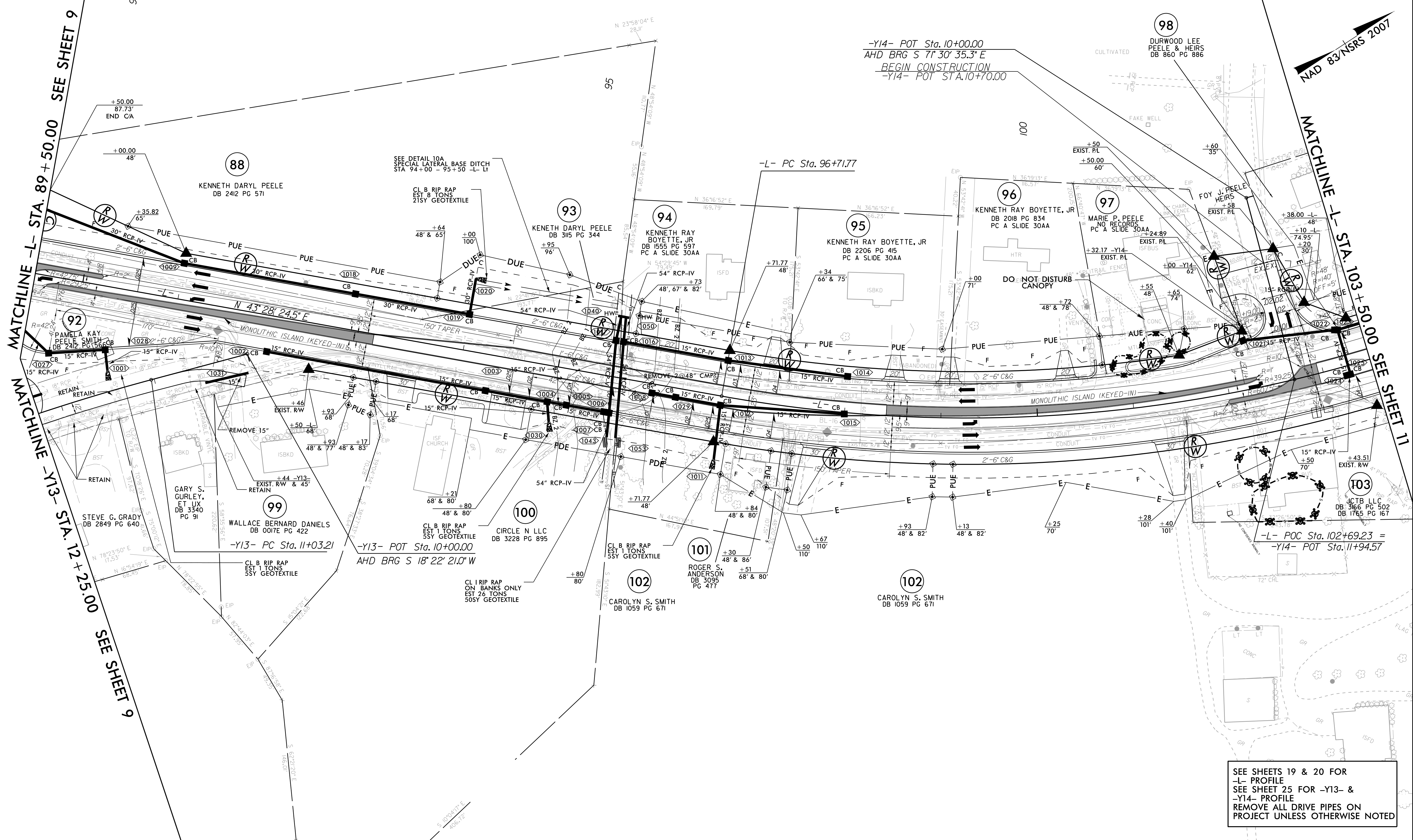
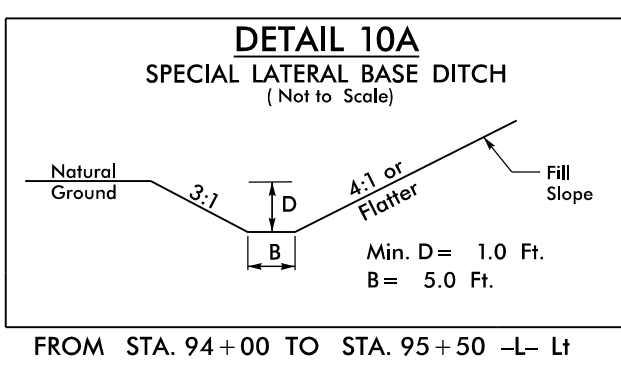


Stantec Consulting Services Inc.
801 Jones Franklin Road
Suite 300
Raleigh, NC 27606
Tel. (919) 851-6866
Fax. (919) 851-7024
www.stantec.com
License No. F-0672

PROJECT REFERENCE NO. U-3609B	SHEET NO. 10
ROADWAY DESIGN ENGINEER	HYDRAULICS ENGINEER
DOCUMENT NOT CONSIDERED FINAL UNLESS ALL SIGNATURES COMPLETED	

-L-
PI Sta 103+06.71
 $\Delta = 47' 17" 45.9" (LT)$
 $D = 3' 57" 05.2"$
 $L = 1,196.94'$
 $T = 634.94'$
 $R = 1,450.00'$
SE = SEE PLANS
DS = 50 MPH

-Y13-
PI Sta 13+14.49
 $\Delta = 12' 03" 38.7" (LT)$
 $D = 2' 51" 53.2"$
 $L = 421.00'$
 $T = 211.28'$
 $R = 2,000.00'$
SE = SEE PLANS
DS = 55 MPH



SEE SHEETS 19 & 20 FOR
-L- PROFILE
SEE SHEET 25 FOR -Y13- &
-Y14- PROFILE
REMOVE ALL DRIVE PIPES ON
PROJECT UNLESS OTHERWISE NOTED