

# MINCO 225

8,208 SF Available

15295 Minnetonka Blvd  
Minnetonka, MN 55345



## Contact Us

**TOM  
BENNETT**

+1 612 386 6108

[tom.bennett@cbre.com](mailto:tom.bennett@cbre.com)

**TOM  
HAYHOE**

+1 952 239 3352

[tom.hayhoe@cbre.com](mailto:tom.hayhoe@cbre.com)

**PARKER  
RICKERT**

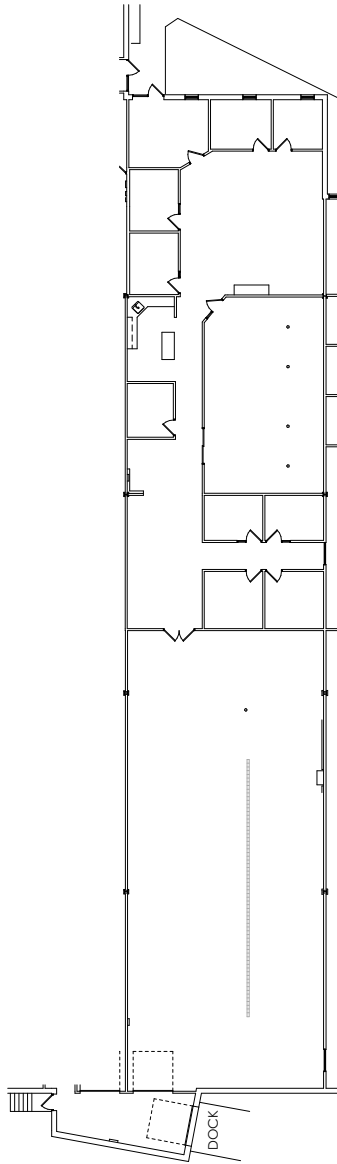
+1 612 845 8022

[parker.rickert@cbre.com](mailto:parker.rickert@cbre.com)

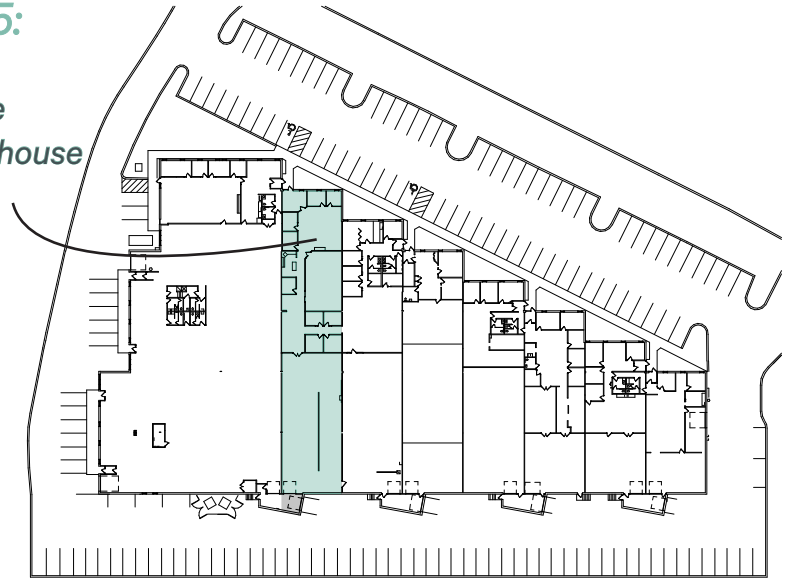
# MINCO 225

15295 Minnetonka Blvd, Minnetonka, MN 55345

For Lease



**Suite 15295:**  
8,208 SF Total  
4,301 SF Office  
3,907 SF Warehouse  
1 Dock Door



## Overview

- Great Access to I-494 via Minnetonka Blvd
- Signage on Minnetonka Blvd
- Dock and Door Loading
- Landlord Open to Demolishing Some Office Space

### Lease Rate

+ Negotiable

### 2025 Operating Expenses

+ \$5.19 PSF

### Clear Height

+ 14'

### Lot Area

+ 4.41 Acres

### Year Built

+ 1977

### Total Building SF

84,684 SF



MINCO 225

15295 Minnetonka Blvd, Minnetonka, MN 55345

For Lease

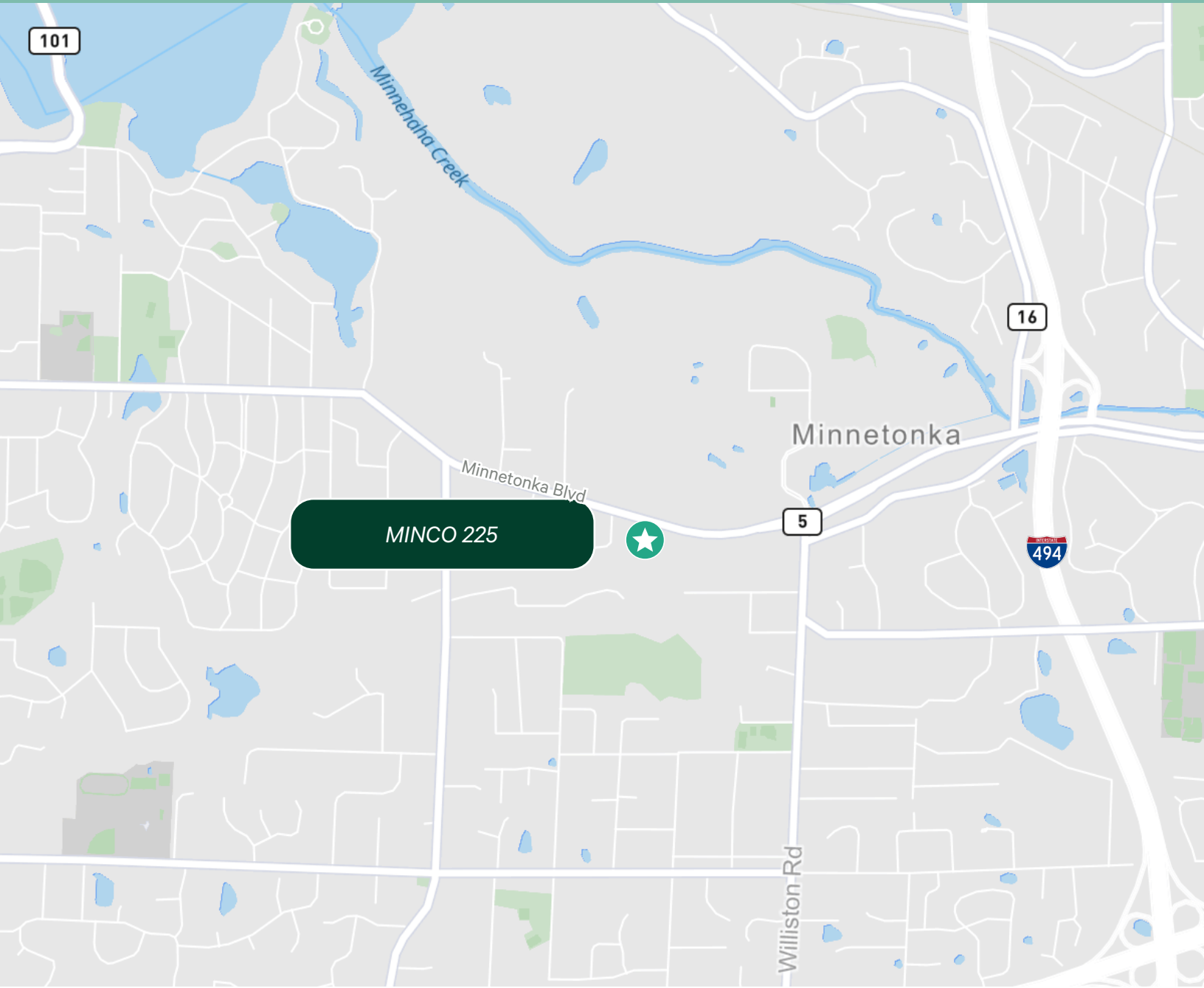


# MINCO 225

15295 Minnetonka Blvd, Minnetonka, MN 55345

For Lease

## MINCO 225



## Contact Us

**TOM  
BENNETT**

+1 612 386 6108

[tom.bennett@cbre.com](mailto:tom.bennett@cbre.com)

**TOM  
HAYHOE**

+1 952 239 3352

[tom.hayhoe@cbre.com](mailto:tom.hayhoe@cbre.com)

**PARKER  
RICKERT**

+1 612 845 8022

[parker.rickert@cbre.com](mailto:parker.rickert@cbre.com)

**CBRE**