

47815 WEST ROAD  
UNIT #102  
WIXOM, MICHIGAN  
INDUSTRIAL FOR LEASE  
2,847 Square Feet Available



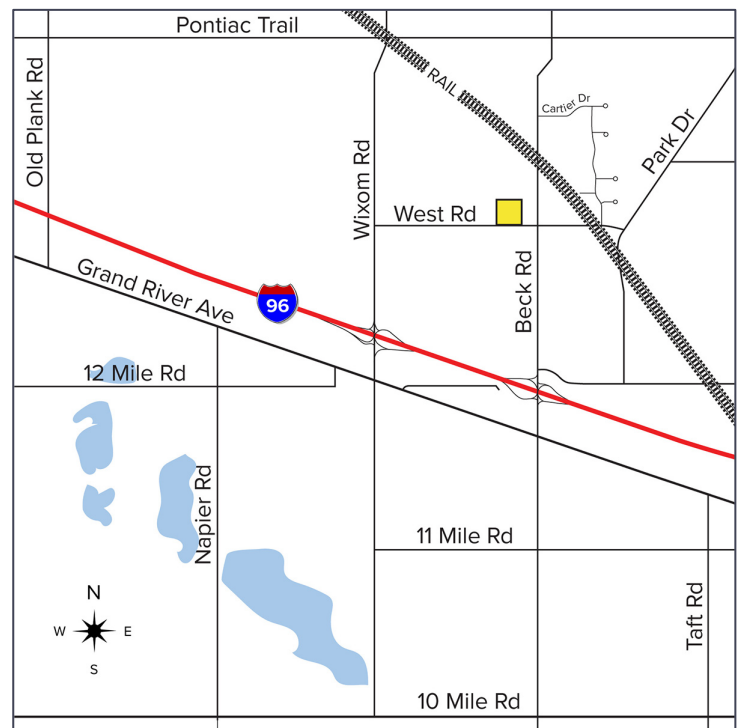
**SIGNATURE  
ASSOCIATES**  
KNOW SIGNATURE | KNOW RESULTS

## LYNN CORPORATE PARK



### PROPERTY FEATURES

- 2,847 square feet available
- 569 square foot office with kitchenette
- 19' clear height
- (1) 12' x 14' grade level door
- (2) shared truckwells
- Zoned M-1; Light Industrial
- Beautifully landscaped and maintained
- Immediate access to I-96 via Beck Road
- Lease Rate: \$9.00/sq. ft. NNN



For more information, please contact:

**CHRISTOPHER M. D'ANGELO**  
(248) 948 0109  
cdangelo@signatureassociates.com

**JIM MONTGOMERY**  
(248) 359 0614  
jmontgomery@signatureassociates.com

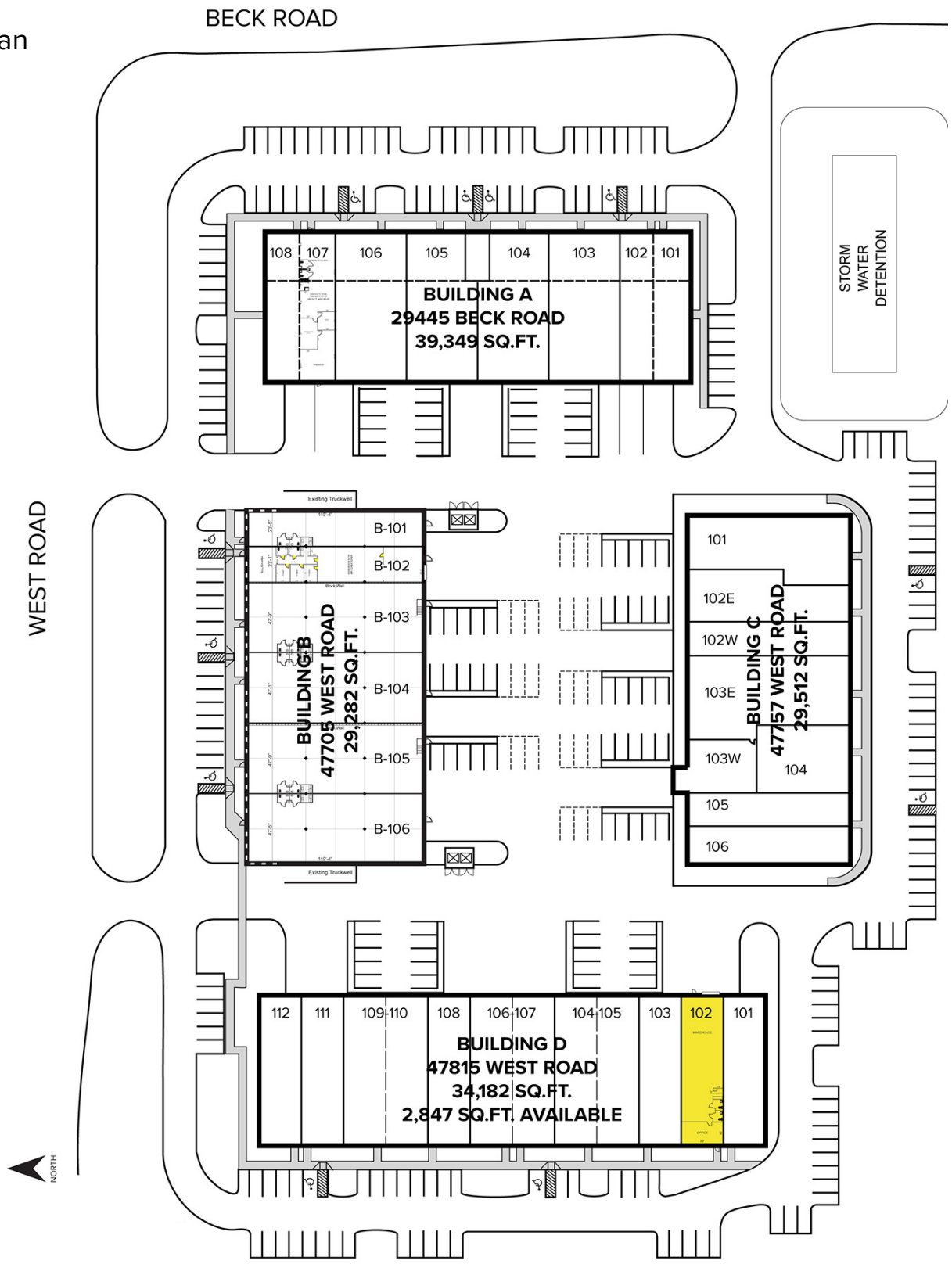
**SIGNATURE ASSOCIATES**  
One Towne Square, Suite 1200  
Southfield, MI 48076  
www.signatureassociates.com

# 47815 West Road Unit #102 - Wixom, Michigan

## Industrial For Lease

**2,847  
Square Feet  
AVAILABLE**

### Site Plan



For more information, please contact:

**CHRISTOPHER M. D'ANGELO**  
(248) 948 0109  
cdangelo@signatureassociates.com

**JIM MONTGOMERY**  
(248) 359 0614  
jmontgomery@signatureassociates.com

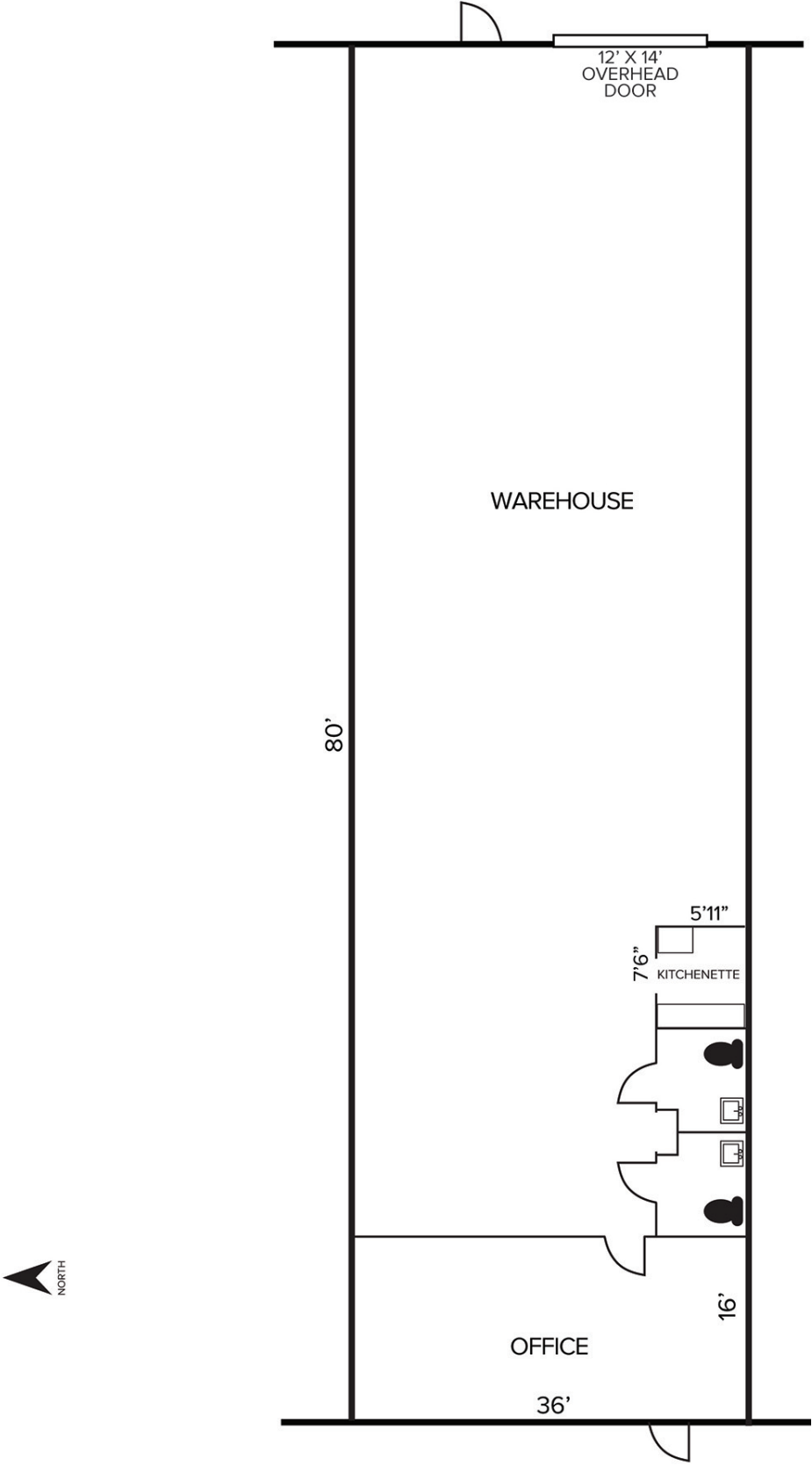
**SIGNATURE ASSOCIATES**  
One Towne Square, Suite 1200  
Southfield, MI 48076  
www.signatureassociates.com

# 47815 West Road Unit #102 - Wixom, Michigan

Industrial For Lease

2,847  
Square Feet  
AVAILABLE

## Unit 102 Floor Plan



For more information, please contact:  
**CHRISTOPHER M. D'ANGELO**  
(248) 948 0109  
cdangelo@signatureassociates.com

**JIM MONTGOMERY**  
(248) 359 0614  
jmontgomery@signatureassociates.com

**SIGNATURE ASSOCIATES**  
One Towne Square, Suite 1200  
Southfield, MI 48076  
www.signatureassociates.com

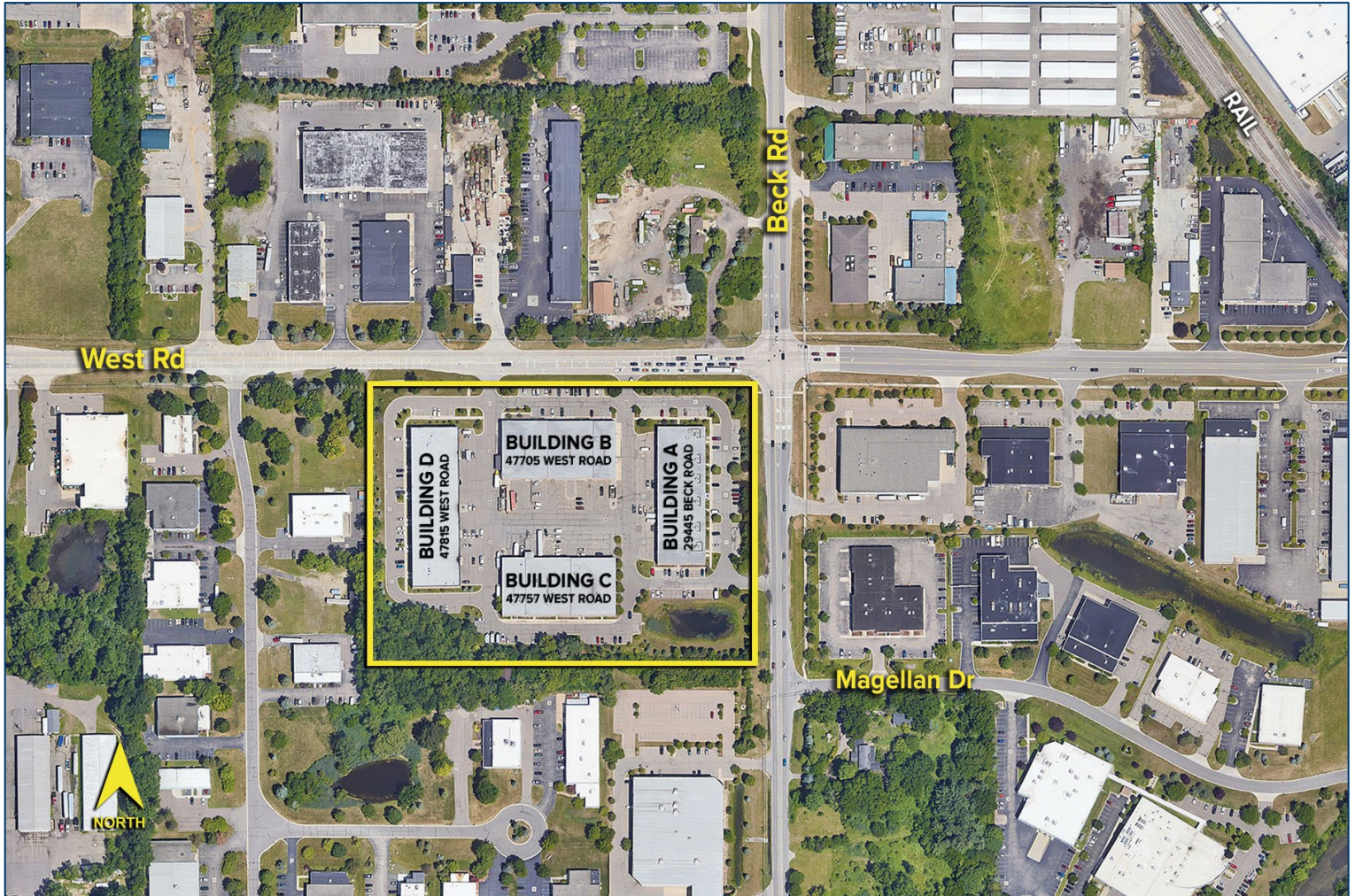
Information is subject to verification and no liability for errors or omissions is assumed. Price is subject to change and listing withdrawal.

# 47815 West Road Unit #102 - Wixom, Michigan

Industrial For Lease

2,847  
Square Feet  
AVAILABLE

Aerial



For more information, please contact:

**CHRISTOPHER M. D'ANGELO**  
(248) 948 0109  
cdangelo@signatureassociates.com

**JIM MONTGOMERY**  
(248) 359 0614  
jmontgomery@signatureassociates.com

**SIGNATURE ASSOCIATES**  
One Towne Square, Suite 1200  
Southfield, MI 48076  
www.signatureassociates.com