

DANA MARINA PLAZA

24901 - 25001 DANA POINT HARBOR DRIVE
DANA POINT, CA 92629



55,457 SF RETAIL / OFFICE PROJECT

- Iconic 5-building project located in the heart of Dana Point Harbor
- Flexibility within potential uses
- Beautiful outdoor common areas
- Excellent signage opportunities with unparalleled visibility
- Proximity to amenities & food services including walking distance to marina
- On-site ATM
- Ocean views

Offered exclusively by:

RETAIL

CHAD R. IAFRATE, CCIM

+1 760 431 4234

chad.iafrate@cushwake.com

LIC #01484290

OFFICE

BROOKS CAMPBELL

+1 760 431 4215

brooks.campbell@cushwake.com

LIC #01380901

SELINA SOUNAKHENE

+1 719 650 5477

selina.sounakhene@cushwake.com

LIC # 02105358

Owned by:



DANA MARINA PLAZA

24901 - 25001 DANA POINT HARBOR DRIVE, DANA POINT, CA 92629

AVAILABILITIES

LEASE RATE: \$4.25/RSF NNN (NNN = APPROX. \$0.79/SF)

Suite #	RSF	Available	Comments
24901 - Suite A150	450	Immediately	Office/Retail



Offered exclusively by:

RETAIL

CHAD R. IAFRATE, CCIM

+1 760 431 4234

chad.iafrate@cushwake.com

LIC #01484290

OFFICE

BROOKS CAMPBELL

+1 760 431 4215

brooks.campbell@cushwake.com

LIC #01380901

SELINA SOUNAKHENE

+1 719 650 5477

selina.sounakhene@cushwake.com

LIC # 02105358



DANA MARINA PLAZA

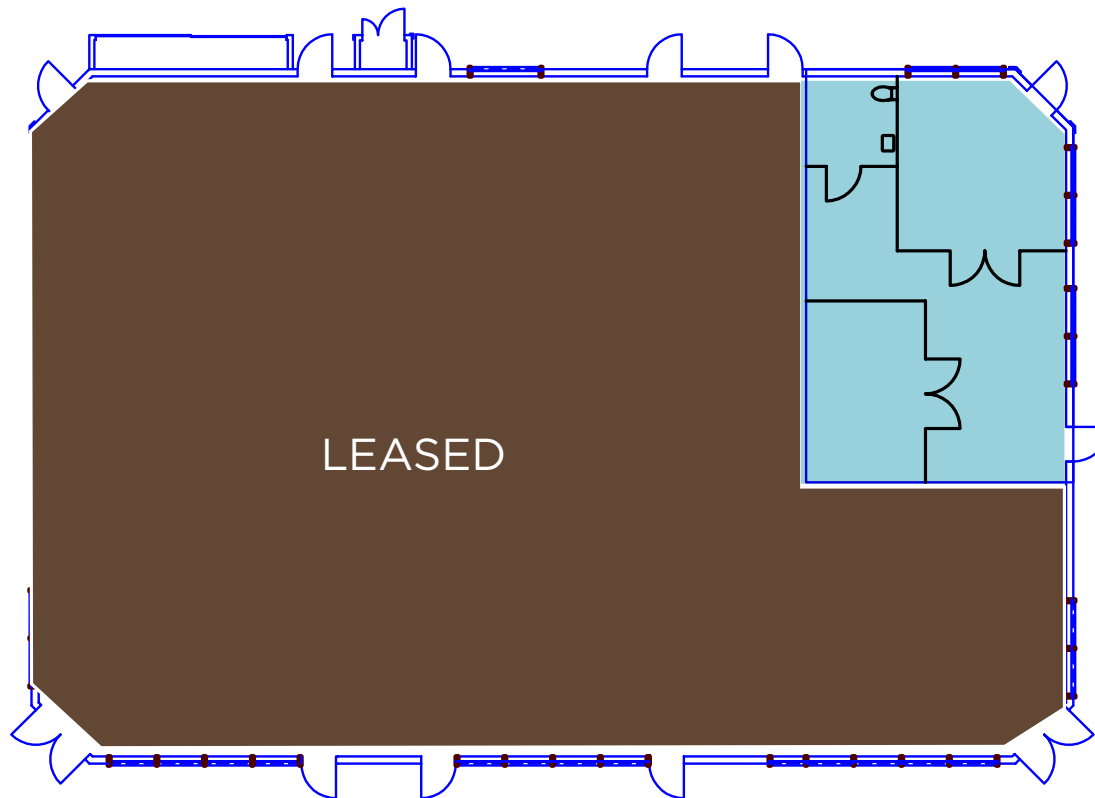
24901 - 25001 DANA POINT HARBOR DRIVE, DANA POINT, CA 92629

FLOOR PLANS

24901 Building

First Floor

Suite A150
450 RSF



Offered exclusively by:

RETAIL

CHAD R. IAFRATE, CCIM

+1 760 431 4234

chad.iafrate@cushwake.com

LIC #01484290

OFFICE

BROOKS CAMPBELL

+1 760 431 4215

brooks.campbell@cushwake.com

LIC #01380901

SELINA SOUNAKHENE

+1 719 650 5477

selina.sounakhene@cushwake.com

LIC # 02105358





DANA MARINA PLAZA

24901 - 25001 DANA POINT HARBOR DRIVE, DANA POINT, CA 92629

Owned by:



Offered exclusively by:

CHAD R. IAFRATE, CCIM

+1 760 431 4234

chad.iafrate@cushwake.com

LIC #01484290

BROOKS CAMPBELL

+1 760 431 4215

brooks.campbell@cushwake.com

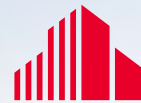
LIC #01380901

SELINA SOUNAKHENE

+1 719 650 5477

selina.sounakhene@cushwake.com

LIC #02105358



**CUSHMAN &
WAKEFIELD**

12830 El Camino Real,
Suite 100
San Diego, CA 92130
P +1 760 431 4200
F +1 760 454 3869
cushmanwakefield.com

Cushman & Wakefield Copyright 2024. The information contained herein was lawfully obtained from sources we consider reliable. Cushman & Wakefield is not responsible and expressly disclaims all liability for errors, omissions, prior sales, withdrawal from the market or change in price. Seller (or Lessor, as the case may be) and broker make no representation as to the environmental condition of the property and recommend Purchaser's (or Lessee's) independent investigation.