

# FROST STREET MEDICAL CENTER

7930 Frost Street • San Diego, California



**MEDICAL OFFICE SPACE  
FOR LEASE**



## PROJECT FEATURES:

- Class "A" Medical office project
- 526 - 9,678 SF Available
- Lease Rate: Negotiable
- Part of a 3-building medical office campus totaling 174,506 SF
- Adjacent to Rady Children's Hospital, Sharp Memorial, and Mary Birch Hospital for Women
- Easy access to both I-805 and Highway 163
- Structure, surface and reserve parking with attendants from \$45 - \$65 per month
- Spec suites available for immediate occupancy
- On-site, professional property management
- Tenant mix includes: OB/GYN, Orthotics/Prosthetics, Orthodontics, Pediatric Dentistry, Oncology, etc.

Floor	Rentable SF	Suite	Asking Rates
<b>7930 Frost Street • San Diego, CA</b>			
2	1,087	201*	Negotiable
2	622	202*	Negotiable
2	1,127	203*	Negotiable
2	1,726	204*	Negotiable
2	1,330	205*	Negotiable
2	3,786	206*	Negotiable
3	2,224	300**	Negotiable
3	987	303**	Negotiable
3	662	306**	Negotiable
3	2,632	307**	Negotiable
3	1,397	308**	Negotiable
4	1,676	401 <sup>+</sup>	Negotiable
4	1,394	403 <sup>+</sup>	Negotiable
4	918	406 <sup>+</sup>	Negotiable
4	1,108	404	Negotiable
4	3,149	407 <sup>+</sup>	Negotiable

\* Suites 201, 202, 203, 203E, 204, 205 & 206 can be combined for up to 9,678 RSF

\*\* Suites 300, 303, 306, 307 & 308 can be combined for up to 7,902 RSF

<sup>+</sup> Suites 401, 403, 406 & 407 can be combined for up to 7,137 RSF



For information, contact:

**CBRE**

**Lars S. Eisenhauer**  
Vice President

Lic. 01372911  
760.438.8534  
lars.eisenhauer@cbre.com

**Dan Yeilding**  
Senior Associate

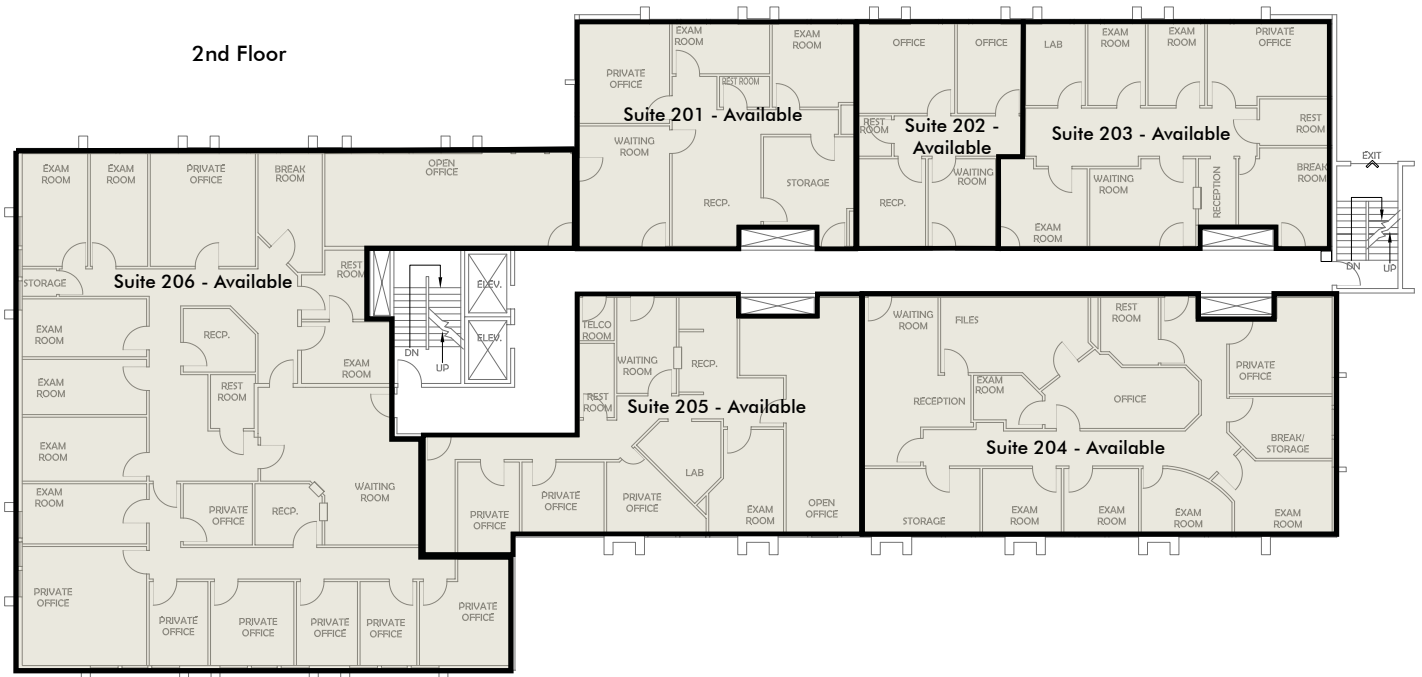
Lic. 01384625  
760.438.8569  
dan.yeilding@cbre.com

# 7930 FROST STREET • SAN DIEGO, CA

MEDICAL OFFICE SPACE • FOR LEASE



2nd Floor



CBRE, Inc.  
4365 Executive Drive, Suite 1600  
San Diego, CA 92121  
[www.cbre.com/sandiego](http://www.cbre.com/sandiego)

© 2013 CBRE, Inc. The information contained in this document has been obtained from sources believed reliable. While CBRE, Inc. does not doubt its accuracy, CBRE, Inc. has not verified it and makes no guarantee, warranty or representation about it. It is your responsibility to independently confirm its accuracy and completeness. Any projections, opinions, assumptions or estimates used are for example only and do not represent the current or future performance of the property. The value of this transaction to you depends on tax and other factors which should be evaluated by your tax, financial and legal advisors. You and your advisors should conduct a careful, independent investigation of the property to determine to your satisfaction the suitability of the property for your needs.

# 7930 FROST STREET • SAN DIEGO, CA

## MEDICAL OFFICE SPACE • FOR LEASE

### 3rd Floor



### 4th Floor



CBRE, Inc.  
4365 Executive Drive, Suite 1600  
San Diego, CA 92121  
[www.cbre.com/sandiego](http://www.cbre.com/sandiego)

© 2013 CBRE, Inc. The information contained in this document has been obtained from sources believed reliable. While CBRE, Inc. does not doubt its accuracy, CBRE, Inc. has not verified it and makes no guarantee, warranty or representation about it. It is your responsibility to independently confirm its accuracy and completeness. Any projections, opinions, assumptions or estimates used are for example only and do not represent the current or future performance of the property. The value of this transaction to you depends on tax and other factors which should be evaluated by your tax, financial and legal advisors. You and your advisors should conduct a careful, independent investigation of the property to determine to your satisfaction the suitability of the property for your needs.