



11005 US Highway 301 S

11005 US Highway 301 S, Riverview, FL 33578



Betty Prihar

PEOPLE'S CHOICE REALTY SERVICES LLC

10012 N Dale Mabry Hwy, Suite 107, Tampa, FL 33618

bprihar@aol.com

(813) 470-9035



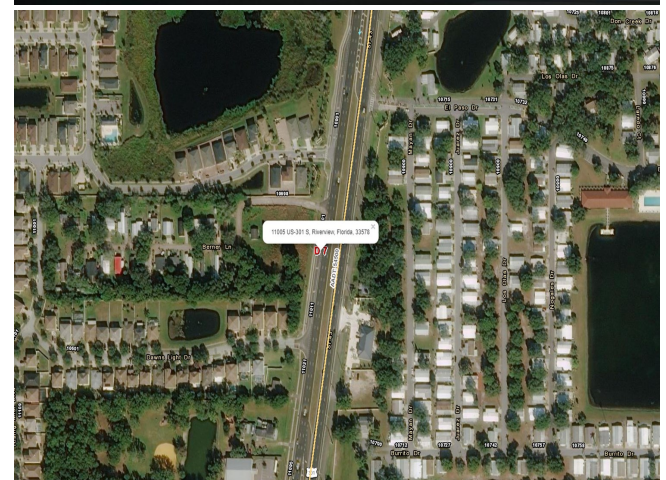
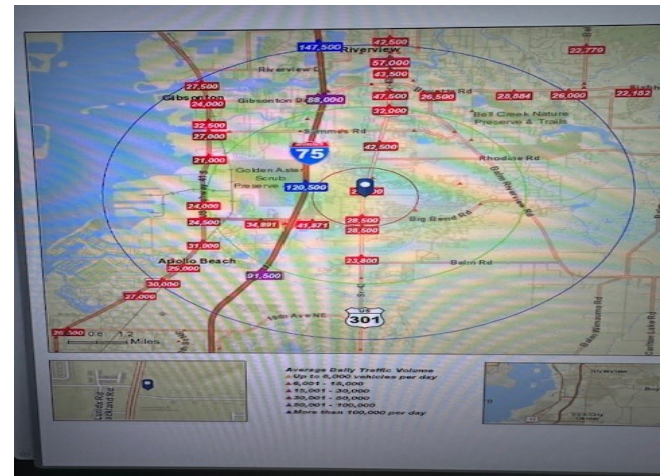
11005 US Highway 301 S

\$2,600,000

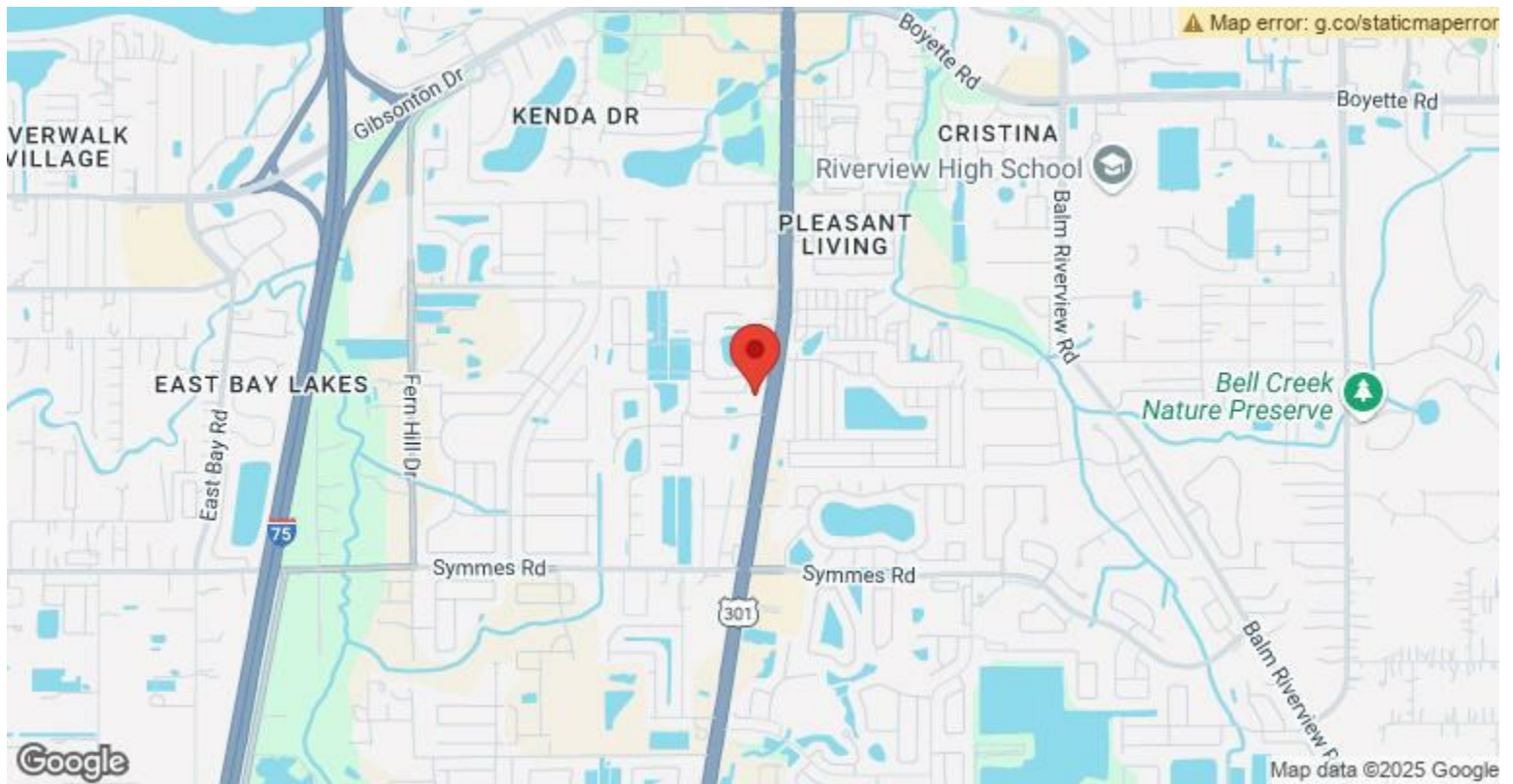
Rectangular lot with frontage on hwy 301, level land, flood zone X, approved for uptown 14000 sq ft of construction. Engineering and architectural plans for 12000 sq ft building with 60 parking spaces are in the process of permitting. Seller has spent between \$150,000-200,000 for the plans, will be transferred to buyer at no cost....

Hwy 301 is exploding with construction around this area. Two miles from new Advent Health hospital on 301. Excellent visibility, daily vehicle count of about 50,000 on hwy 301 and Gibsonton road. Lot has engineering and architectural plans done for 12000 sq ft of office space and 60 parking spaces. Flood zone X...

- excellent location



Price:	\$2,600,000
Property Type:	Land
Property Subtype:	Commercial
Proposed Use:	Commercial
Sale Type:	Investment or Owner User
Total Lot Size:	1.85 AC
No. Lots:	1
Zoning Description:	FD
APN / Parcel ID:	077064-0000



11005 US Highway 301 S, Riverview, FL 33578

Rectangular lot with frontage on hwy 301, level land, flood zone X, approved for uptown 14000 sq ft of construction. Engineering and architectural plans for 12000 sq ft building with 60 parking spaces are in the process of permitting. Seller has spent between \$150,000-200,000 for the plans, will be transferred to buyer at no cost.

