

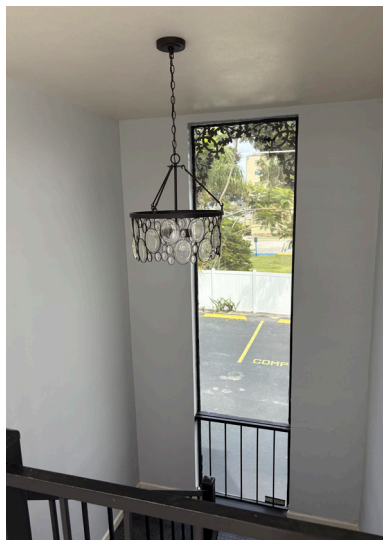


Property Highlights

- 2-Story Freestanding Building
- Excellent visibility on Colonial Drive
- On-site surface parking (some covered parking)
- Signage opportunities available

Location

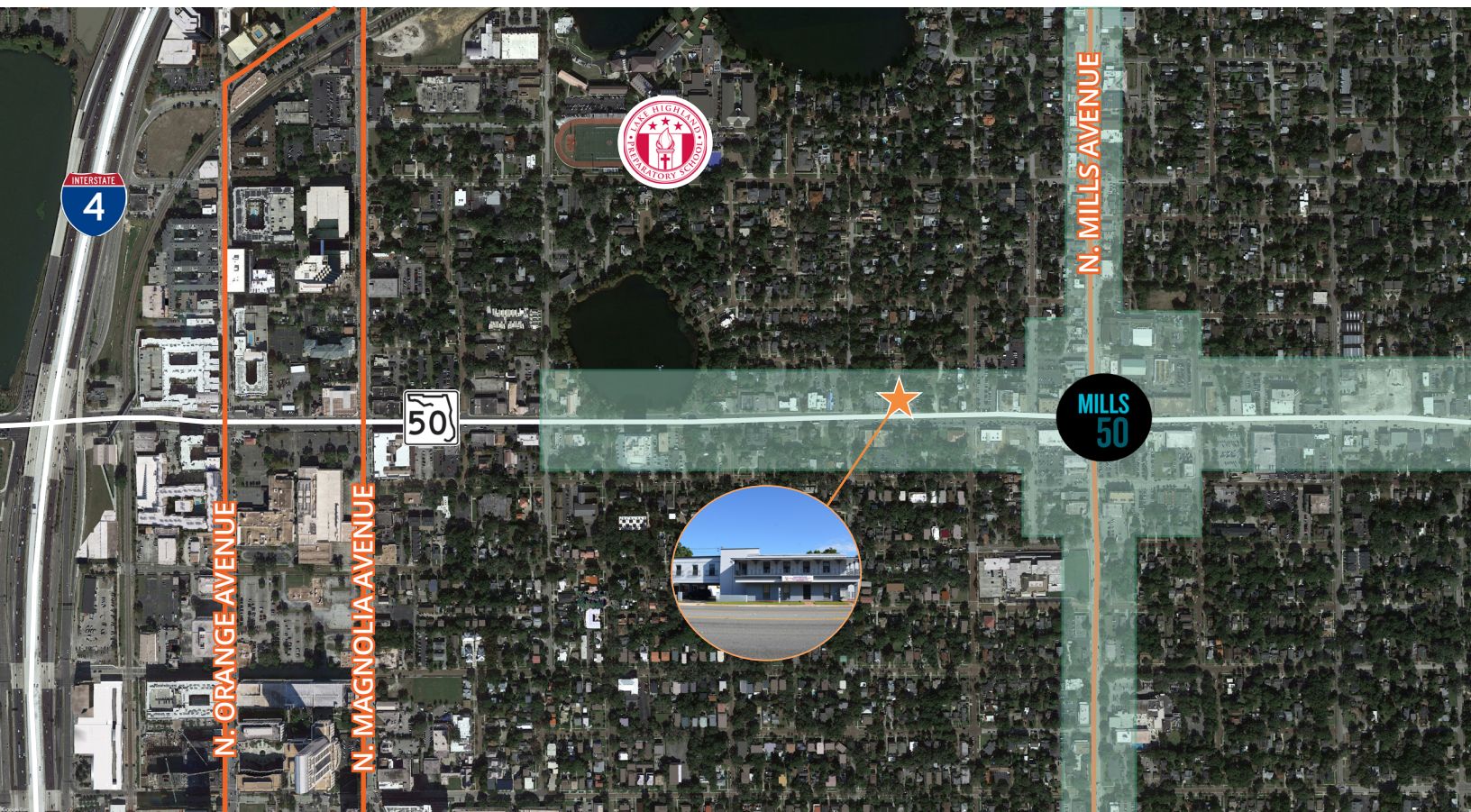
- Located in the highly desirable Mills 50 District at the corner of Colonial Drive and Summerlin Avenue
- Minutes from Interstate-4, S.R. 408, Mills 50 District, AdventHealth Village, Downtown Orlando, Thornton Park and Eola Park



Emily Zinaich, Senior Vice President
D 407 440 6641
C 407 230 8797
emily.zinaich@avisonyoung.com

AVISON
YOUNG

For Lease
723 E. Colonial Drive
Orlando, FL 32803

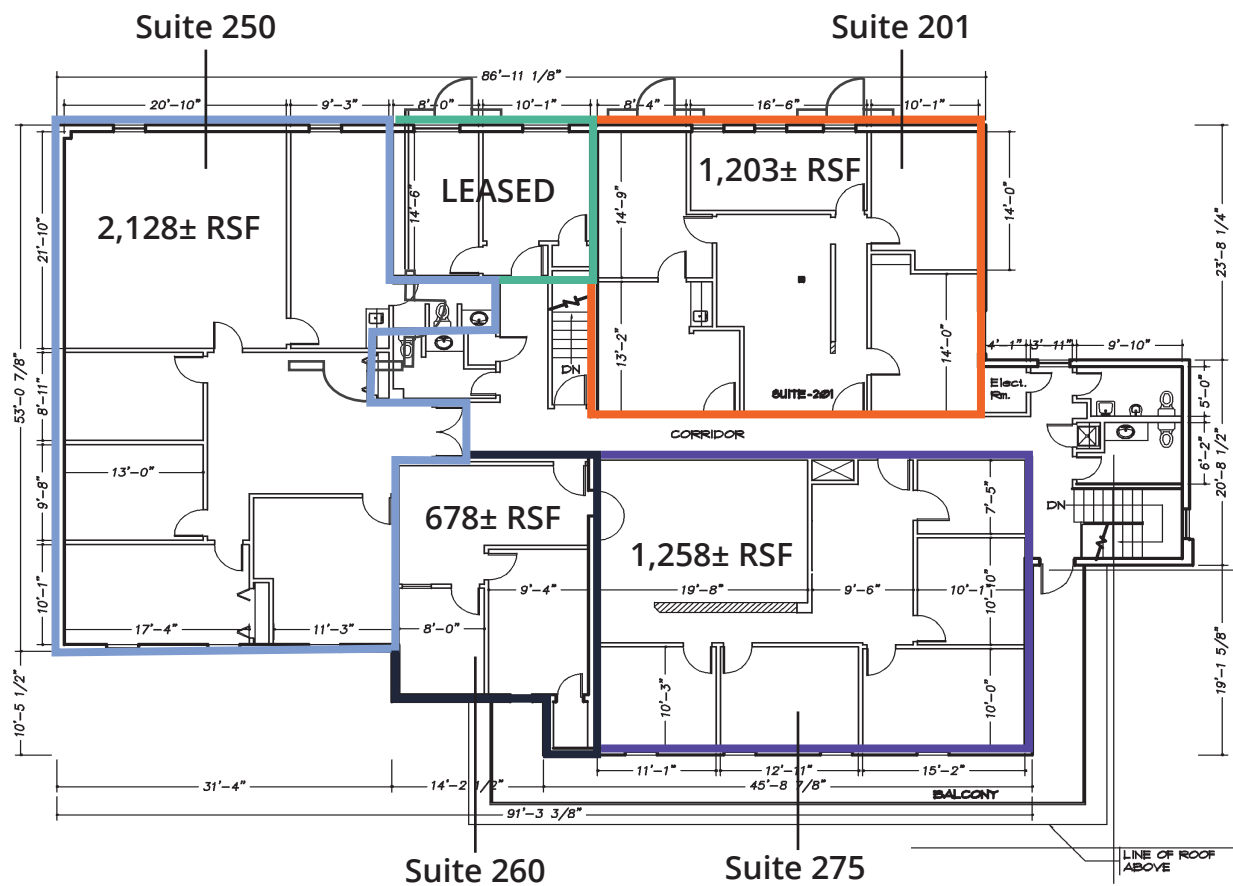


Nearby Amenities



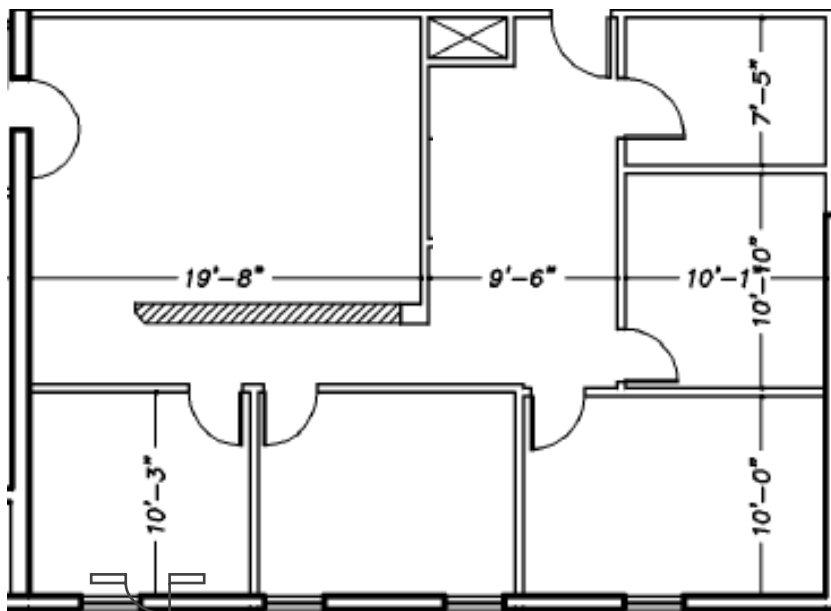
Second Floor

5,267± RSF



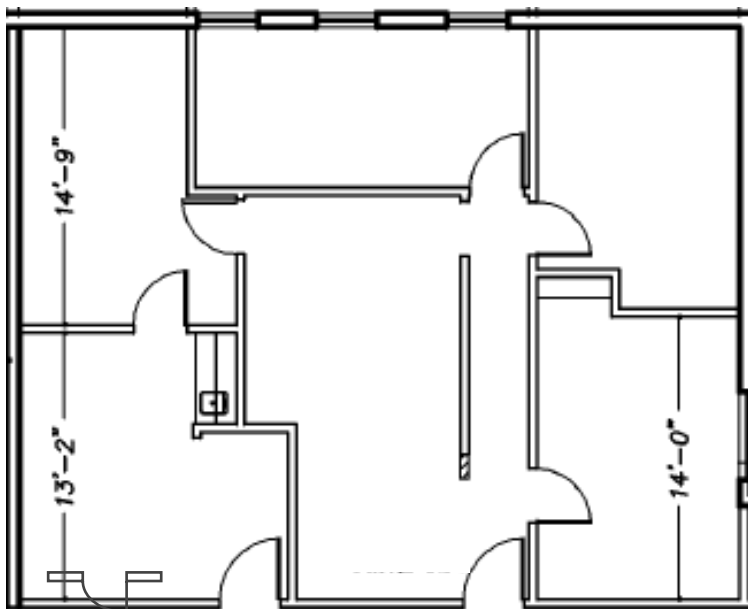
Emily Zinaich, Senior Vice President
D 407 440 6641
C 407 230 8797
emily.zinaich@avisonyoung.com

Suite 275
1,258± RSF



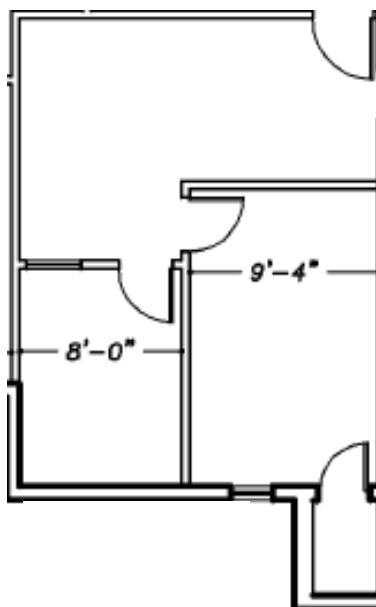
Emily Zinaich, Senior Vice President
D 407 440 6641
C 407 230 8797
emily.zinaich@avisonyoung.com

Suite 201
1,203± RSF



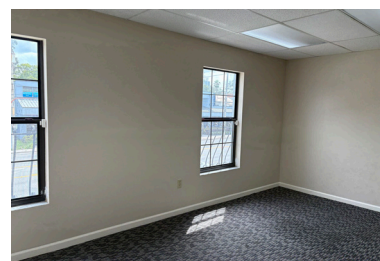
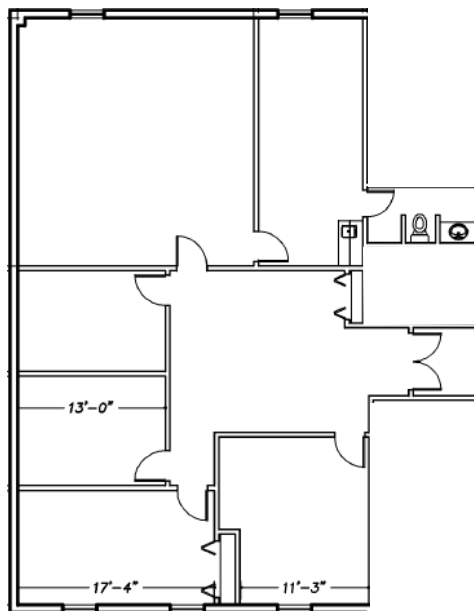
Emily Zinaich, Senior Vice President
D 407 440 6641
C 407 230 8797
emily.zinaich@avisonyoung.com

Suite 260
678± RSF
Move-In Ready



Emily Zinaich, Senior Vice President
D 407 440 6641
C 407 230 8797
emily.zinaich@avisonyoung.com

Suite 250
2,128± RSF



Emily Zinaich, Senior Vice President
D 407 440 6641
C 407 230 8797
emily.zinaich@avisonyoung.com