



2700 PHILADELPHIA ROAD

EDGEWOOD, MARYLAND 21040

FOR
**LEASE/
SALE**

**PRICE
REDUCED!**



MACKENZIE
COMMERCIAL REAL ESTATE SERVICES, LLC

PROPERTY OVERVIEW

HIGHLIGHTS:

- Beautiful office located just off of Route 24 with close proximity to I-95
- Prime location to service both Aberdeen Proving Ground and the Edgewood Arsenal
- Opportunity to purchase a Corporate Headquarters
- Zoned B2, which is Harford County's designation for office, service, and retail

AVAILABLE:

SALE:

13,204 SF

LEASE:

FIRST FLOOR: 6,380 SF

SECOND FLOOR: 2,400 SF

PARKING RATIO:

3.4 : 1,000 SF

OCCUPANCY:

IMMEDIATE

SALE PRICE:

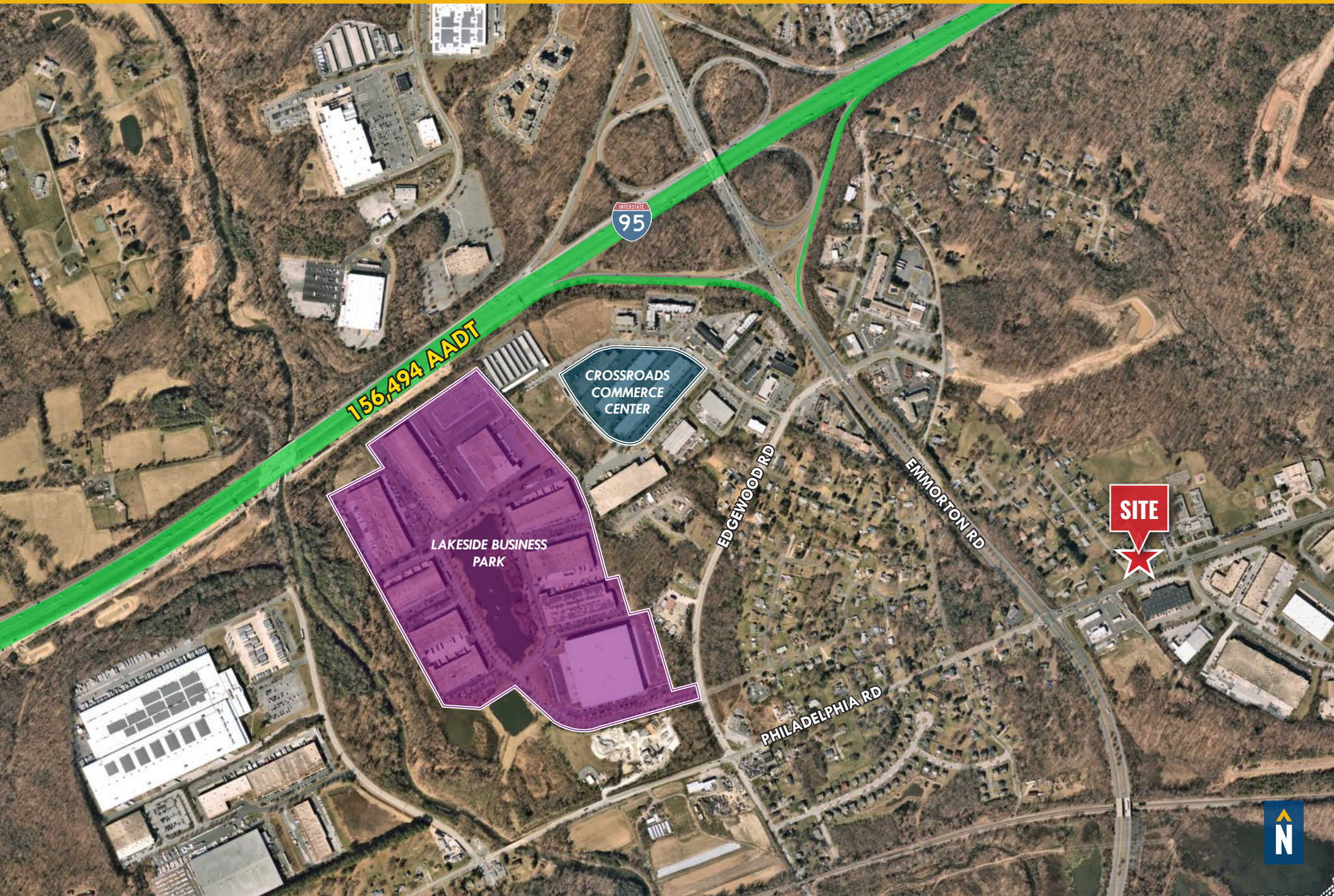
\$1,950,000

RENTAL RATE:

\$17.50/SF, NNN



LOCAL BIRDSEYE



FOR MORE INFO **CONTACT:**



TOM MOTTLEY

SENIOR VICE PRESIDENT & PRINCIPAL

443.573.3217

TMOTTLEY@mackenziecommercial.com



BEETLE SMITH

SENIOR VICE PRESIDENT

443.573.3219

BSMITH@mackenziecommercial.com



VISIT **PROPERTY PAGE** FOR MORE INFORMATION.



MACKENZIE

COMMERCIAL REAL ESTATE SERVICES, LLC

410-879-1900

**3465 Box Hill Corporate Center Drive, Suite F
Abingdon, MD 21009**

OFFICES IN: **ANNAPOLIS** **BALTIMORE** **BEL AIR** **COLUMBIA** **LUTHERVILLE**

www.MACKENZIECOMMERCIAL.com

No warranty or representation, expressed or implied, is made as to the accuracy of the information contained herein, and same is submitted subject to errors, omissions, change of price, rental or other conditions, withdrawal without notice, and to any specific listing conditions imposed by our principals.