



EY

PLAZA

725 S Figueroa St
Los Angeles, CA

L.A.'s Premier
Workplace Tower

RICH HISTORY, OPEN-AIR DESIGN, AND HIGHLY- DESIRABLE CONVENIENCE.

EY Plaza is adjacent to the FIGat7th retail center and rises 41 stories into the Downtown L.A. Skyline. The historic granite and glass tower is LEED Platinum-certified and looks down upon 2.5 expansive acres of green space — creating an urban oasis for tenants and visitors alike.



95
WALK SCORE



65
BIKE SCORE



100
TRANSIT SCORE





Top-tier Ratings & Certifications

EY Plaza is LEED-Platinum and Energy Star-certified, as well asGRESB Green Star and WELL Health-safety-rated, providing the highest level of health and well-being for its inhabitants.

Historic Design

Built in 1985 by renowned architects Skidmore, Owings & Merrill, EY Plaza is in good company with the firm's other landmark projects — the Sears Tower in Chicago and the Lever House in New York.

Access & Convenience

Direct access to major freeways (10, 110 & 5) and public transportation options (7th Street METRO Station and bike share adjacent) makes EY Plaza a well-connected location.

Direct Connectivity to an Amenity-rich Core

Walking distance to L.A. Live, Microsoft Theater, and Crypto.com Arena, EY Plaza is surrounded by over 30 dining and shopping options at adjacent FIGat7th retail center, plus a weekly farmers market and curated seasonal art and live music events.

PREMIER WORKSPACE

On-site management, engineering, maintenance, and 24/7 security ensure all tenants feel a sense of safety and that the facility is well-cared for. All 910,000 square feet of EY Plaza provide a streamlined environment and an elevated experience.

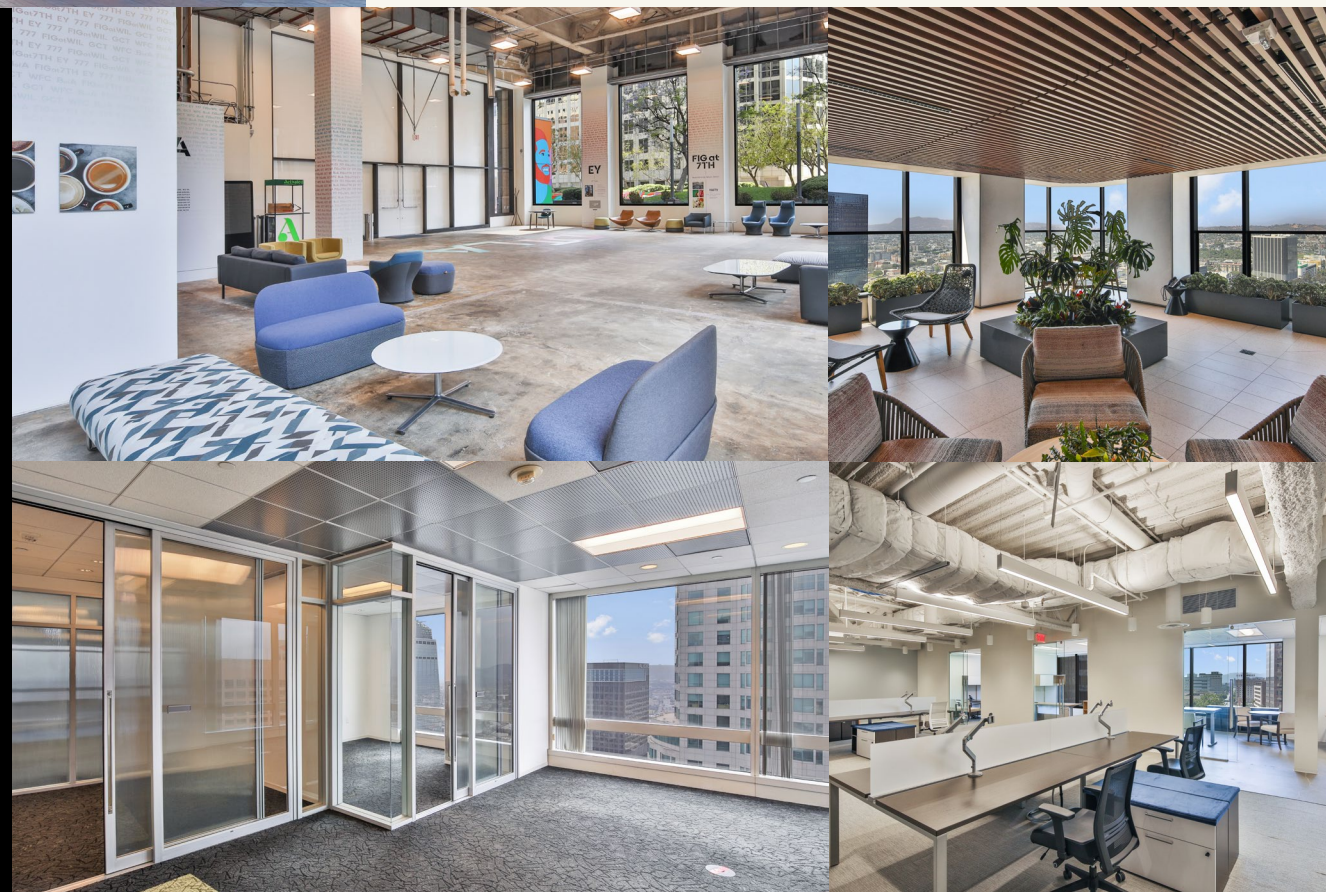
Executive valet parking

Car wash

E.V. charging stations

Concierge services

Bike parking



PLAZA HIGHLIGHTS

OFFICE
±904,198 SF

PARKING
1:1,000

RETAIL
±330,000 SF
(FIGat7th)

TENANT FLOOR
CEILING HEIGHTS
12'6"
(slab-to-slab)

TYPICAL FLOOR SIZE
±25,000 RSF

EY PLAZA IS ATTACHED TO FIGAT7TH RETAIL CENTER AND THE TASTE FOOD HALL, WHICH FEATURE AN ARRAY OF RESTAURANTS AND WORLD-CLASS BRANDS.

ON-SITE AMENITIES:



california PIZZA KITCHEN

MORTON'S THE STEAKHOUSE



Bath & Body Works

SEPHORA

Coco 都可

FIVE GUYS BURGERS and FRIES

MAC

oleego BY PARKS BBQ

salvata

NORDSTROM rack

Mendocino Farms

MIGHTY bowl

TARGET



H&M

Sprinkles CUPCAKES

OCHO

ZARA



VICTORIA'S SECRET

Velo COFFEE ROASTERS

twist grill



HIGHLY DESIRABLE CONVENIENCE, ACCESS, AND WALKABILITY



○ SHOPPING CENTERS

- 1. The Bloc**
Alamo Draffhouse Cinema
Bring Something To The Party
Café Balzac
Coffeewalk Yogurtalk
DTLA Proud A+R=T Community Center
District DTLA
Drybar
Eyes on the Bloc
Farmer's Fridge
GNC Live Well
Hatch
Jewelry Pavilion
Macy's
Marco Valentino
Nordstrom Local
Outsole213
Paper Source
Qwench + Drnk
T-Mobile
Uniqlo
USPS
Volvo Studio
- 2. FIGat7th**
Bath & Body Works
H&M
Lencrafter's
M.A.C. Cosmetics
Nordstrom Rack
Sephora
Sunglass Hut
T-Mobile
Target
Victoria's Secret
Zara
CVS
Thursday Farmer's Market

● HOSPITALITY

1. Intercontinental Hotel
2. Sheraton Grand Los Angeles
3. Hotel Indigo
4. The Wayfarer Hotel by Hilton
5. Hotel Figueroa

● GROCERY STORES

1. Whole Foods

○ ATTRACTIONS

1. Pershing Square
2. Crypto.com Arena
3. Microsoft Theater
4. Lucky Strike Bowling
5. L.A. Live
6. Alamo Draff House Cinema

● FITNESS CLUBS

1. L.A. Fitness
2. Gold's Gym

○ RESTAURANTS

1. El Patron Cantina
2. NIKU X
3. Fogo De Chao
4. Takami Sushi & Robata
5. Taste of Food Hall
California Pizza Kitchen
George's Greek Grill
Mendocino Farms
Sprinkles Cupcakes
Starbucks
Morton's Steakhouse
Coco Fresh Tea & Juice
Five Guys
Indus by Saffron
Mighty Bowl
New Moon Café
Ocho Mexican Grill
Oleego by Parks BBQ
Salata
The Melt
Twist & Grill
Velo Coffee

AN EASY, BREEZY WORKDAY INSIDE AND OUT

2.5-acres of lush green
space with seating



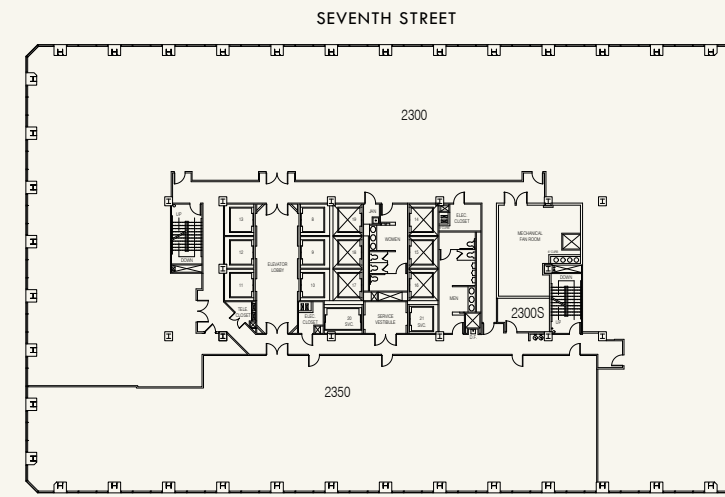
SPACE TO CONNECT AND GROW

FLOORS 23-25: LAST BIG BLOCK OF SPACE LEFT

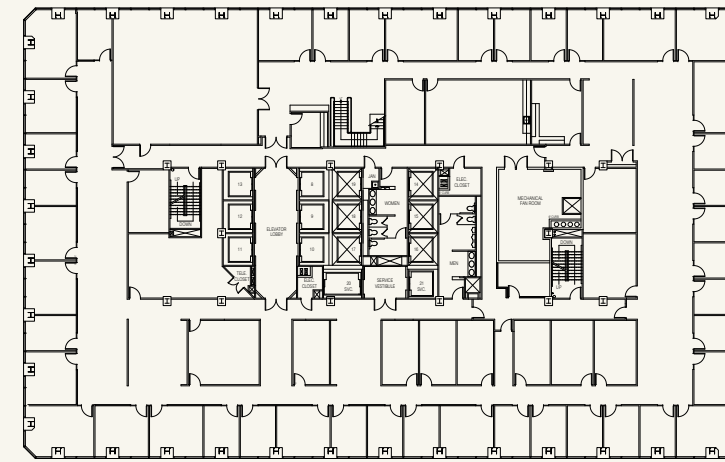
Ground-floor identity with
three floors of contiguous
space in mid-to-high rise

1ST FLOOR (6,816 SF) + BLOCK
(67,446 SF) 74,262 TOTAL SF

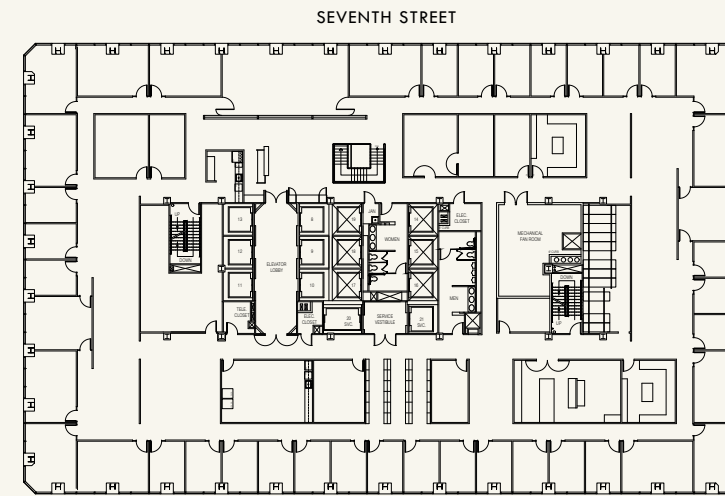
Suite 150 & 175
(6,816 SF – Potential Private
Lobby Check-in Area)



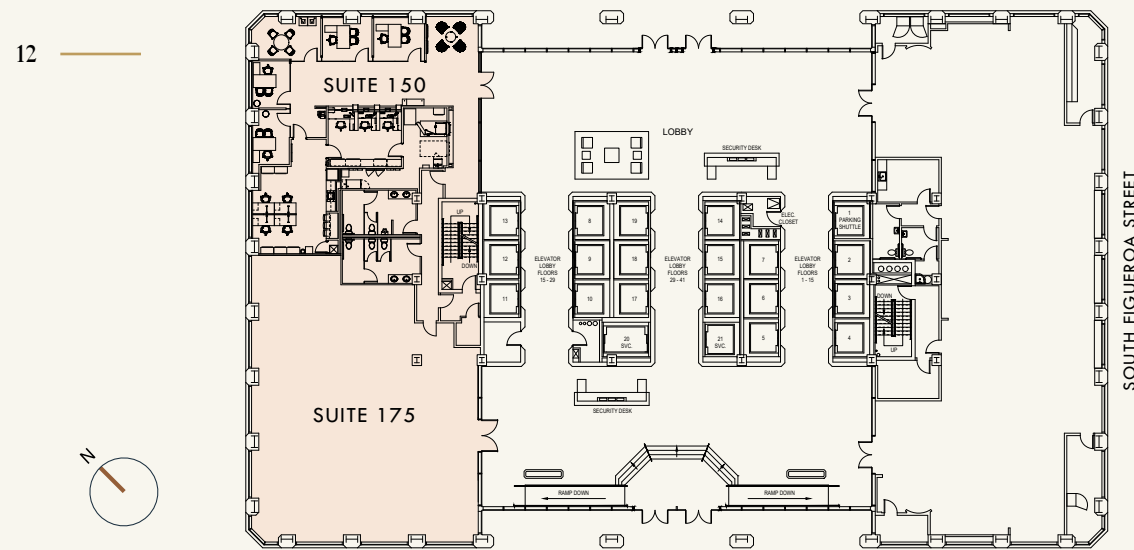
**FLOOR
23**
24,754 SF



**FLOOR
24**
24,754 SF



**FLOOR
25**
24,754 SF



**FLOOR
01**
Suite 150
2,711 SF
& Suite 175
3,848 SF
totaling an
additional
6,816 SF

PRIVATE CHECK-IN LOBBY AREA



MOVE-IN READY SPEC SUITE SPACE CONFIGURED TO BOOST PRODUCTIVITY



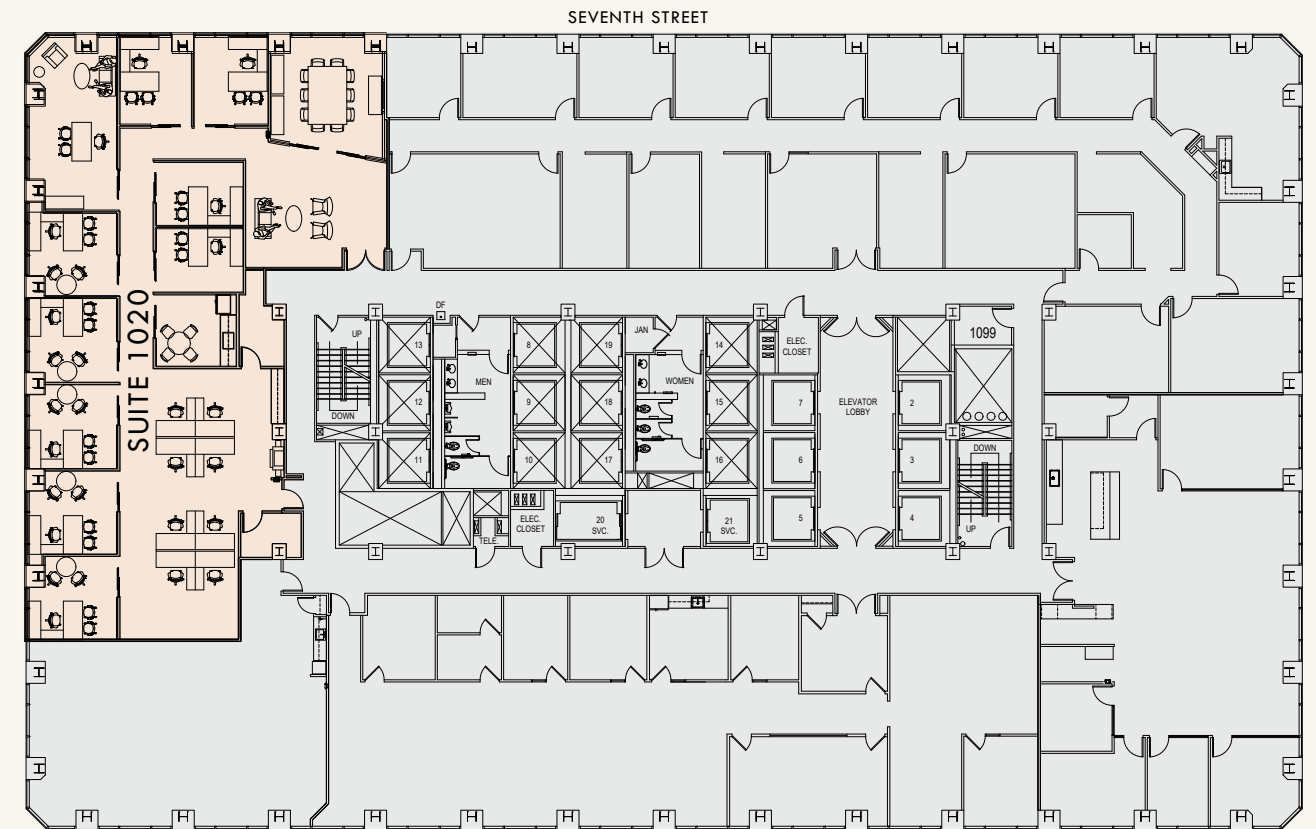
SUITE 1020 - 5,495 SF



FLOOR 10

14

Suite 1020
5,495 SF



15



Get In
Touch

Matthew Heyn

Vice Chair
Lic. 01306148
Dir. +1 818 334 1860
matt.heyne@colliers.com

Ian Gilbert

Executive Vice President
Lic. 01908014
Dir. +1 310 622 1902
ian.gilbert@colliers.com

