



**35-30 146 STREET
FLUSHING NY 11354**



RETAIL CONDO FOR SALE

- Corner Exposure
- Heavy Traffic Flow
- Prime Retail Hub
- Flexible Space
- High-demand retail Market
- 4 Retail Stores

**Restaurant****Bank****Bakery Shop****Pharmacy****Grocery Store**

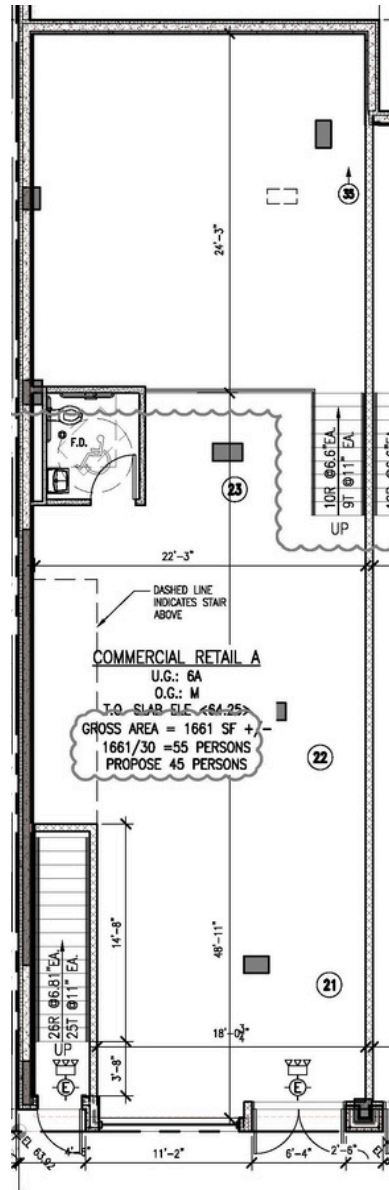
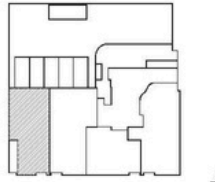
PRIME CORNER RETAIL CONDOS

Strong Investment Potential

This high-visibility corner location offers maximum exposure on Northern Blvd, a major commercial corridor in Flushing. The property benefits from heavy foot and vehicle traffic, making it ideal for retail, restaurant, or service businesses.

Surrounded by established businesses and dense residential communities, this location provides a built-in customer base. With public transportation nearby and easy access to major roadways, it ensures steady customer flow.

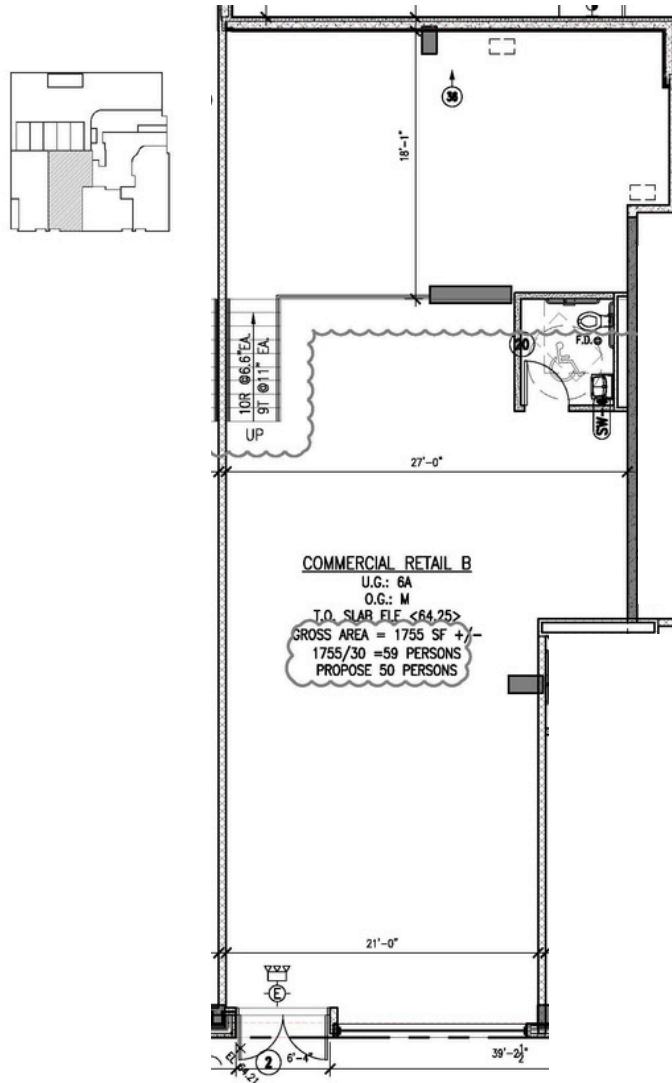
This is a high-demand retail market with strong property value appreciation. Whether for an owner-user or investor, this property offers exceptional business potential in one of Queens' most dynamic commercial districts.



Retail Condo Information

Ground Floor Retail #1	1,661 sf
Common Charge (Est.):	\$535/Month
Property Tax (Est.):	15 Years ICAP
Asking Price:	1,880,000

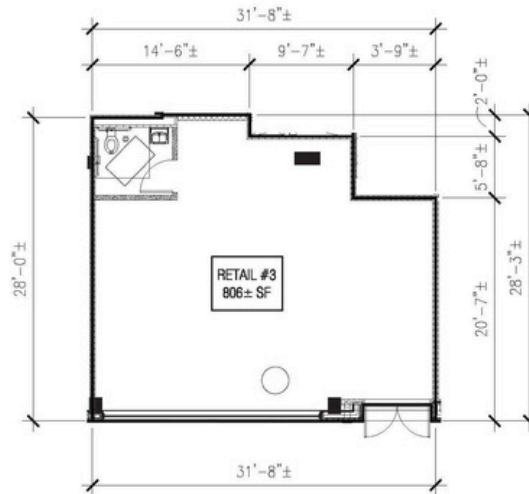
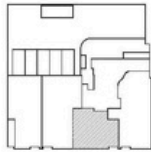




Retail Condo Information

Ground Floor Retail #2	1,755 sf
Common Charge (Est.):	\$610/Month
Property Tax (Est.):	15 Years ICAP
Asking Price:	2,390,000





NORTHERN 146 CONDOMINIUM

35-30 146TH STREET, FLUSHING, NY



1 RETAIL #3
SCALE: 3/32" = 1'-0"

DATE: 06/24/2024

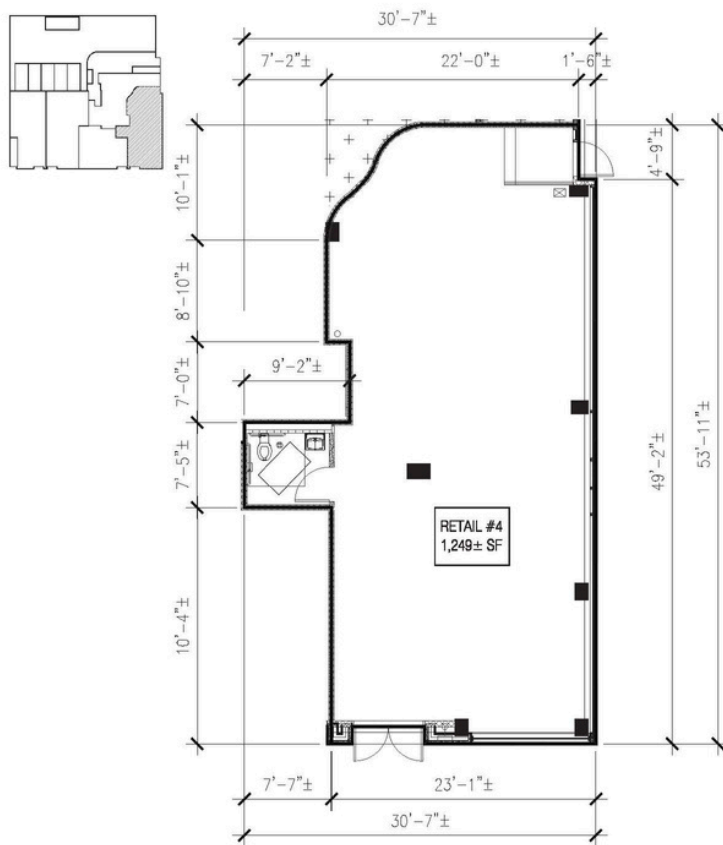
Retail Condo Information

Ground Floor Retail #3	806 sf
Common Charge (Est.):	\$269/Month
Property Tax (Est.):	15 Years ICAP
Asking Price:	1,465,000





35-30 146 STREET
FLUSHING NY 11354



NORTHERN 146 CONDOMINIUM

35-30 146TH STREET, FLUSHING, NY



1 RETAIL #4
SCALE: 3/32" = 1'-0"

DATE: 06/24/2024

Retail Condo Information

Ground Floor Retail #4	1,249 sf
Common Charge (Est.):	\$417/Month
Property Tax (Est.):	15 Years ICAP
Asking Price:	\$2,270,000



**35-30 146 STREET
FLUSHING NY 11354**



CONTACT EXCLUSIVE AGENTS FOR MORE INFORMATION

SIANG (LILLIAN) LIU
917-418-8233
Lillian@PROlinksRealty.com

PING WANG
718-683-6933
Ping.wang@PROlinksRealty.com