

MODERN OFFICE FOR LEASE

COMPASS
COMMERCIAL



600 N 85TH ST SUITE C102, SEATTLE, WA 98103



SUITE C102

Asking Rate:	Negotiable - Contact for additional details
Address:	600 N 85th St Suite C102, Seattle, WA 98103
Size:	3145 SF
Parking:	6 dedicated stalls in parking garage
Lease Type:	NNN

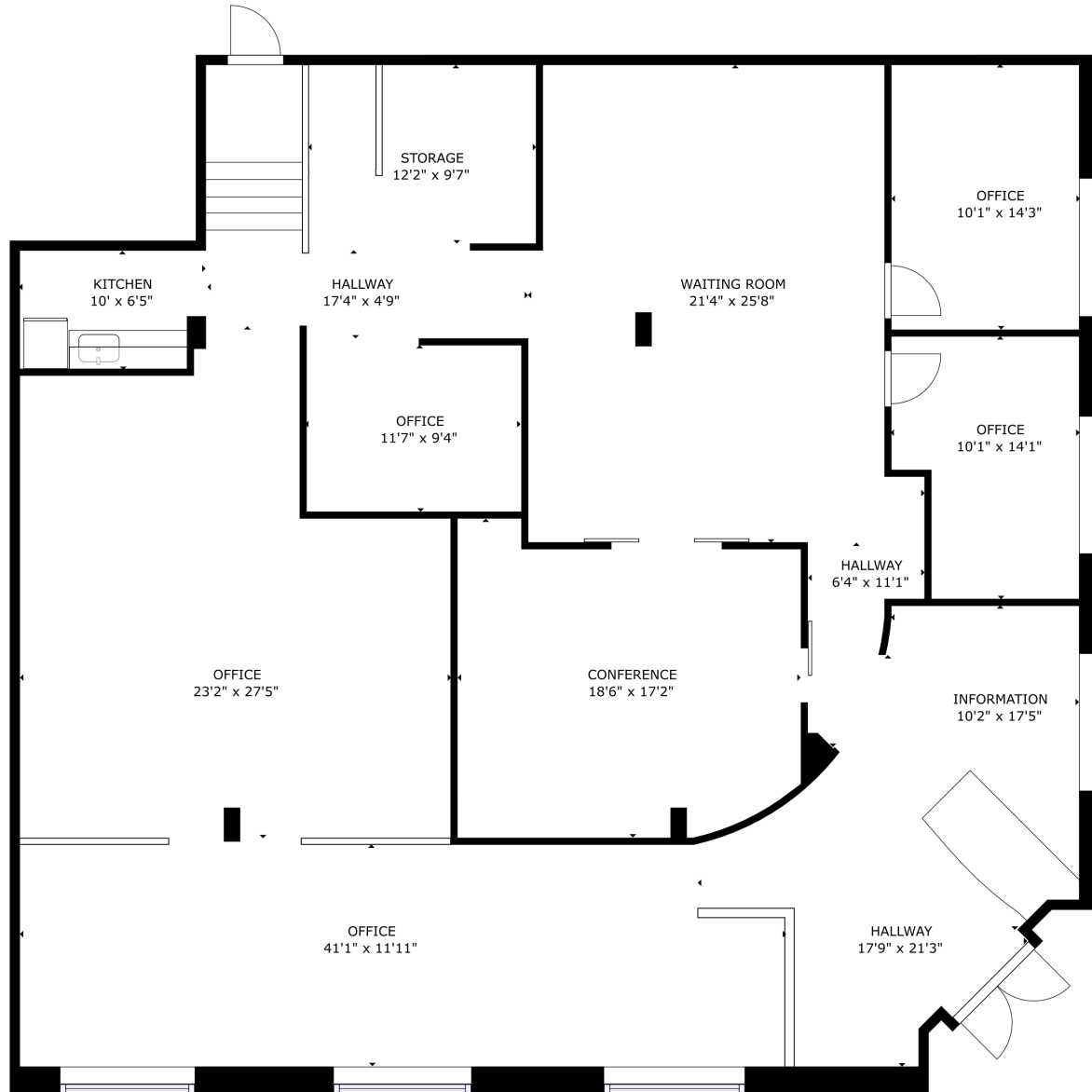
Beautiful corner office commercial condo located in the heart of Greenwood on 85th Street, surrounded by restaurants, cafes, local businesses and residential above.

The space is a modern open office, spanning over 3,145 SF with high ceilings and tons of natural light. Greeted by open reception area, two private offices, several open office areas, large executive conference room, kitchenette, with 6 dedicated parking stalls, and extra storage.

Perfect for a professional office tenant – law office, real estate, architect, or other office use.







COMPASS COMMERCIAL

EXCLUSIVELY LISTED BY:
COMPASS COMMERCIAL

CHRISTINA CHONG
MANAGING BROKER
206-551-5909
christina.chong@compass.com

Please reach out to Listing Brokers
for any additional information and
questions.

