

DOWNTOWN ORLANDO OFFICE FOR LEASE

**43 E PINE ST
ORLANDO, FL 32801**



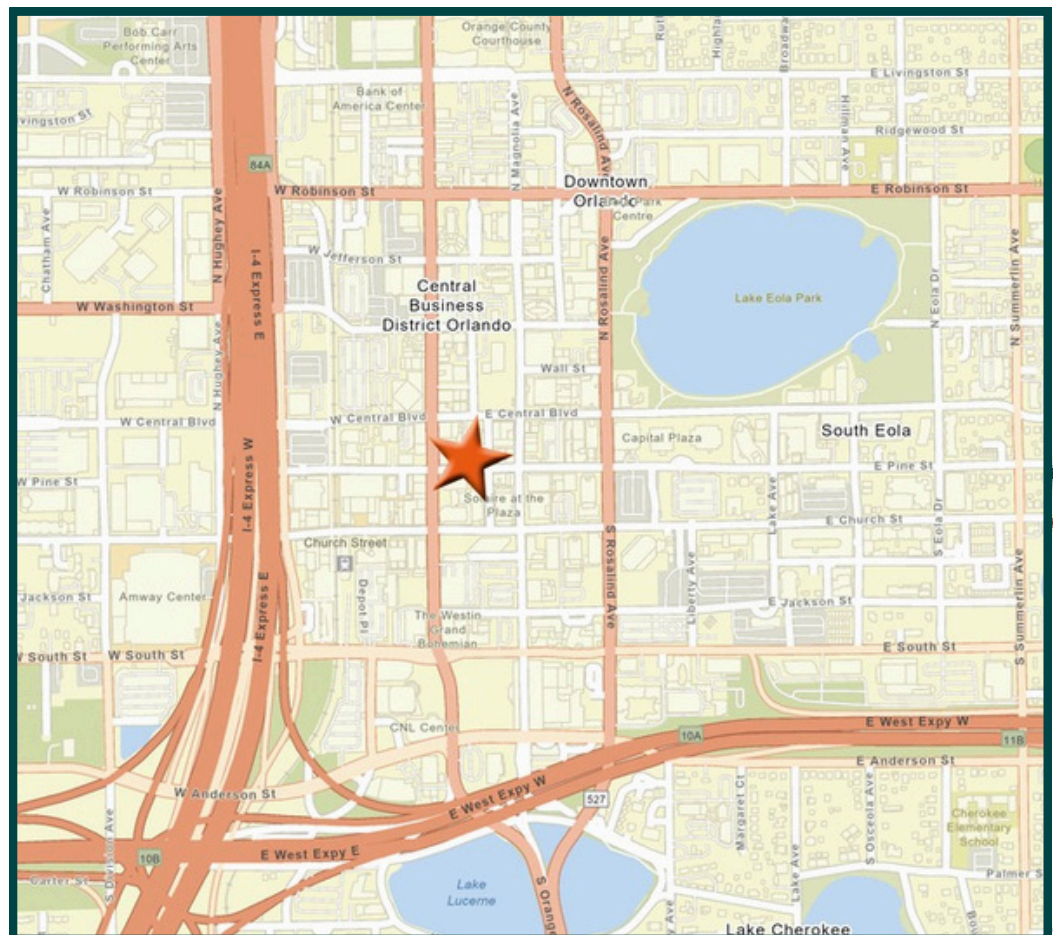
**OFFERED AT \$29.50/PSF
(net electric)**

**BEAUTIFUL LOFT-STYLE OFFICE
IN THE HEART OF ORLANDO'S
CENTRAL BUSINESS DISTRICT**

**5 ON-SITE PARKING SPOTS
INCLUDED -
6 MORE AVAILABLE CLOSE BY**

**3,220 SQ FT +/-
EXCELLENT MIX OF OFFICES &
OPEN AREA**

**WALK SCORE = 96
STEPS AWAY FROM THE
ENTIRE ORLANDO CBD**

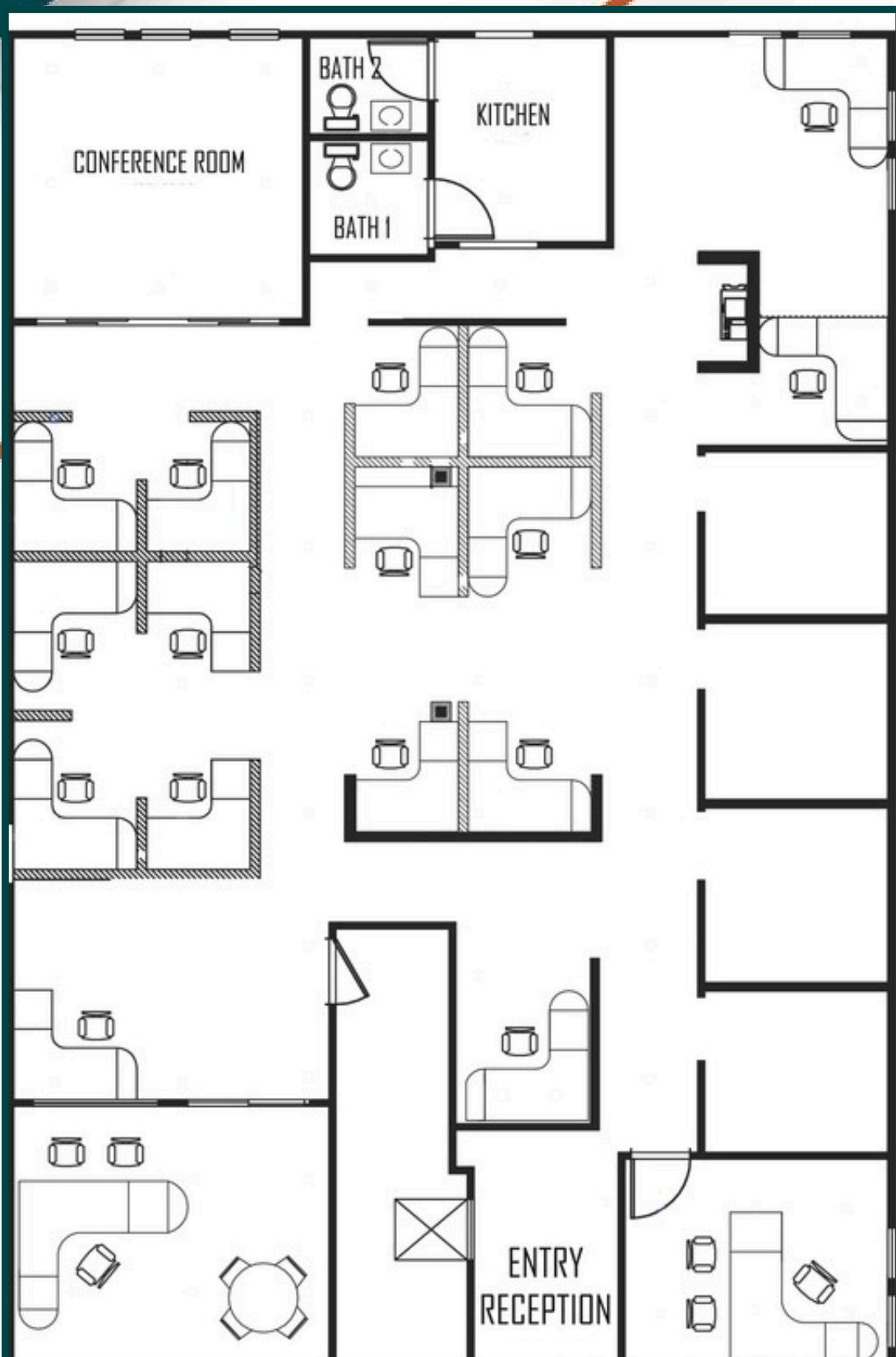
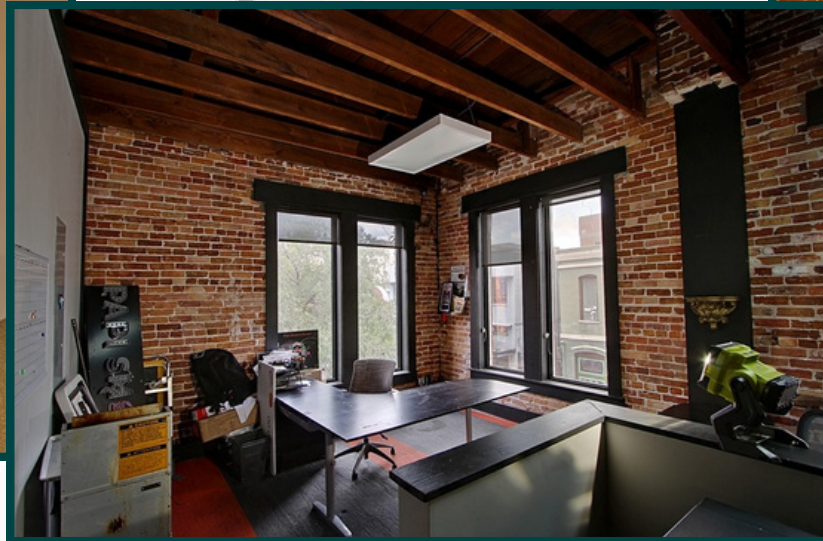


Contact:

Scott Lloyd CCIM, RPA
Scott@LloydCA.com | Cell: 407-963-7558
18 W. Pine St. | Orlando, FL 32801

LLOYD
ADVISORS

DOWNTOWN ORLANDO OFFICE FOR LEASE



43 E Pine St. offers unique historic character combined with modern functionality, providing a distinctive space for professional offices, creative firms, or service users seeking an elevated downtown presence

**3,220 SQ FT +/-
ENTIRE SECOND STORY
BUILT IN 1920
ELEVATOR ACCESS
5 ON-SITE PARKING SPOTS, 6
MORE AVAILABLE ACROSS
THE STREET
INSTANT ACCESS TO I-4 & SR
408**

**OFFERED AT \$29.50
Per Sq. Ft.
(net electric)
Parking Included**

Contact:

Scott Lloyd CCIM, RPA
Scott@LloydCA.com | Cell: 407-963-7558
18 W. Pine St. | Orlando, FL 32801

COMMERCIAL
LLOYD
ADVISORS