

2060 SPRINGDALE RD  
CHERRY HILL, NJ

**FLEX/  
WAREHOUSE  
FOR LEASE**



## PROPERTY OVERVIEW

### Location:

2060 Springdale Road  
Cherry Hill, NJ

### Availability:

Suite 100: 6,322 SF - Avail 10/1/24

### Lease Rate:

Call for Details

## Property Specifications

Property Type: Flex/Warehouse

Parking 70+/- Spaces

Zoning IR-Industrial Restricted

## Property Features

Located in Cherry Hill Business Park  
in close proximity to Exits 34 and 36 of  
I-295 and NJ Turnpike Exit 4

Ceiling height: 19' Warehouse

Fully air conditioned warehouse space

Column spacing - Clear Span

Tenant signage available

Electrical: 200 amp, 3 phase

Loading: Tailgates available

**Adam Dembo**

856-324-5194

adembo@markeim.com

**Markeim Chalmers, Inc**

1415 Route 70 E Ste 500

Cherry Hill, NJ 08034

856-354-9700

www.markeim.com



**MC** **MARKEIM**  
**INC** **CHALMERS** **INC**  
COMMERCIAL REAL ESTATE  
**856-354-9700**

**2060 SPRINGDALE RD**  
**CHERRY HILL, NJ**

**FLEX/  
WAREHOUSE  
FOR LEASE**



**Adam Dembo**

856-324-5194

[adembo@markeim.com](mailto:adembo@markeim.com)

**Markeim Chalmers, Inc**

1415 Route 70 E Ste 500

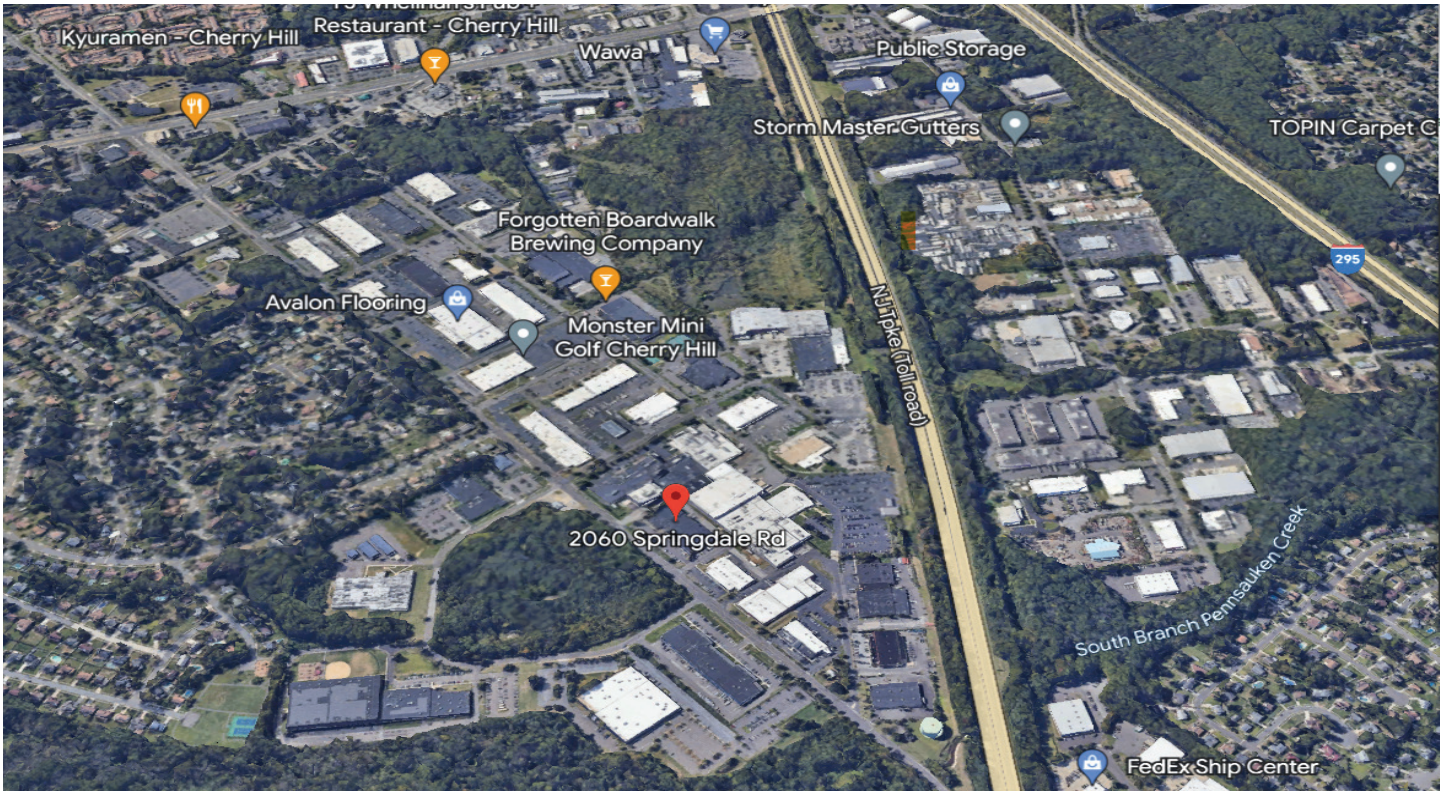
Cherry Hill, NJ 08034

856-354-9700

[www.markeim.com](http://www.markeim.com)

*Subject to errors omissions, change and withdraw without further notice.*





**Adam Dembo**

856-324-5194

adembo@markeim.com

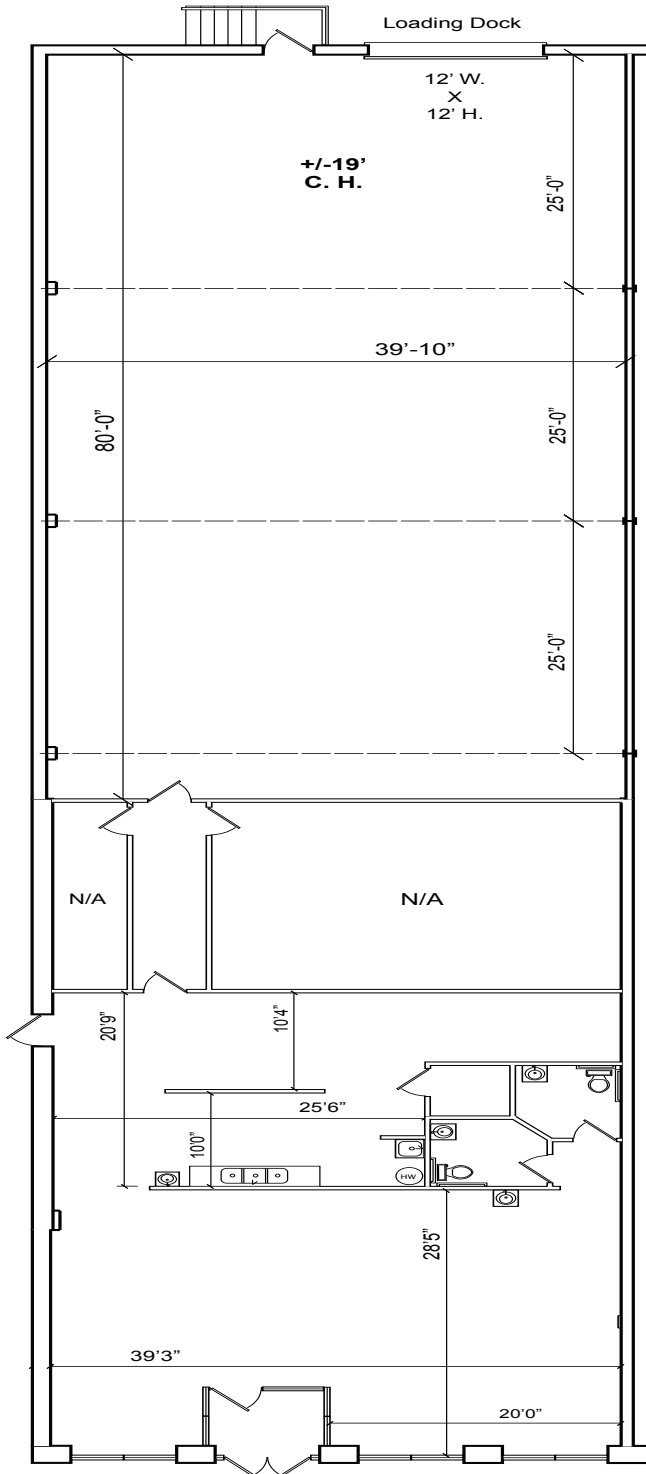
**Markeim Chalmers, Inc**

1415 Route 70 E Ste 500

Cherry Hill, NJ 08034

856-354-9700

www.markeim.com



**UNIT 100**  
**6,322 SQ. FT.**

RETAIL - 2,970 SF  
 WAREHOUSE - 3,352 SF

<b>2060 SPRINGDALE ROAD</b> <b>CHERRY HILL, NJ</b>	
APPROXIMATE SQUARE FEET SHOWN	
DETAILED FLOOR PLANS    ROOMINDERS REAL ESTATE MARKETING P 856.423.4233   WEB - WWW.ROOMINDERS.COM   C 609.504.2117 E JON@ROOMINDERS.COM   MEASURED BY JON HITCHNER 2.20.2024   REVISED - * ACTUAL MEASUREMENTS MAY VARY   * NOT TO BE USED FOR CONSTRUCTION PURPOSES * POSITION OF WALLS AND FIXTURES ARE APPROXIMATE   * ONLY TO BE USED WITH WRITTEN PERMISSION	

**Adam Dembo**  
 856-324-5194  
 adembo@markeim.com

**Markeim Chalmers, Inc**  
 1415 Route 70 E Ste 500  
 Cherry Hill, NJ 08034  
 856-354-9700  
 www.markeim.com