



**NEW SALE PRICE \$1,250,000**



**5,000 SF**  
For Lease/Sale

**LOCATED DOWNTOWN GROSSE POINTE, *THE VILLAGE***

16835 KERCHEVAL AVENUE  
GROSSE POINTE, MICHIGAN 48230

#### PROPERTY INFORMATION

- Potential for Mixed-Use Retail, Office or Residential
- Contiguous 5,000 RSF Available with Two (2) 2,500 RSF Floor Plates
- Historic Finishes Including 150-year Old Murals, Stained Glass Windows from the 1800's, Imported Black Walnut Wood and Oak Paneling Retained from the Stonehurst Estate, and Restored 19th Century Chandeliers
- Built in 1956
- Previously Occupied by Merrill Lynch (vacated in 2017)

#### CONTACT US

**MATTHEW BUSLEPP**

Senior Associate

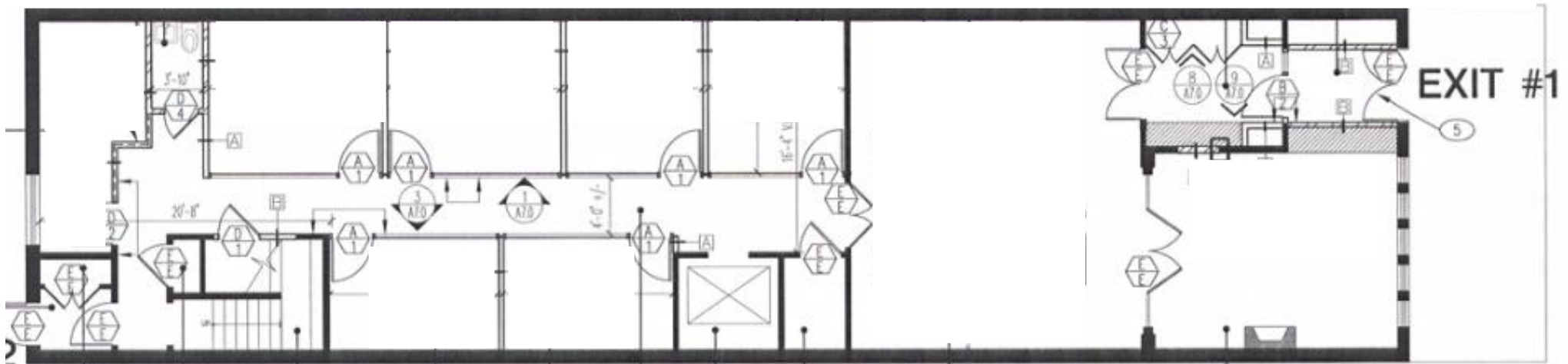
T: +1 313 209 4123

[matt.buslepp@avisonyoung.com](mailto:matt.buslepp@avisonyoung.com)



# FLOOR PLANS

FIRST FLOOR | 2,500 RSF



## CONTACT US

### MATTHEW BUSLEPP

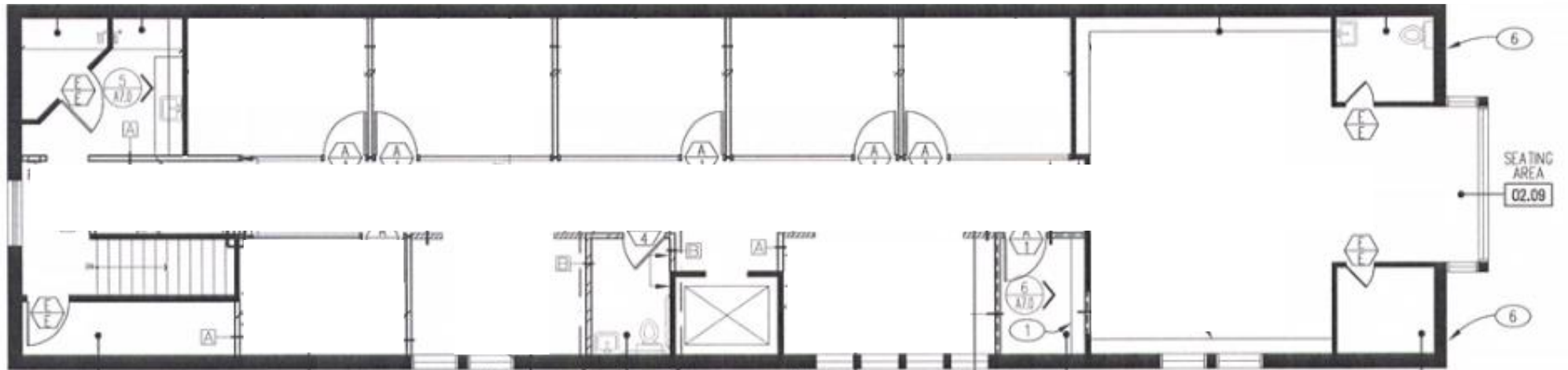
Senior Associate

T: +1 313 209 4123

[matt.buslepp@avisonyoung.com](mailto:matt.buslepp@avisonyoung.com)



## SECOND FLOOR | 2,500 RSF



### CONTACT US

#### **MATTHEW BUSLEPP**

Senior Associate

T: +1 313 209 4123

[matt.buslepp@avisonyoung.com](mailto:matt.buslepp@avisonyoung.com)

