

551

MADISON AVENUE

BETWEEN 55TH &
56TH STREETS

THE HEART OF
THE PLAZA DISTRICT



SIZE: *Ground Floor - 2,853 SF (Divisible)*
Storage (Ground Level) - 390 SF

FRONTAGE: *27' 7"*

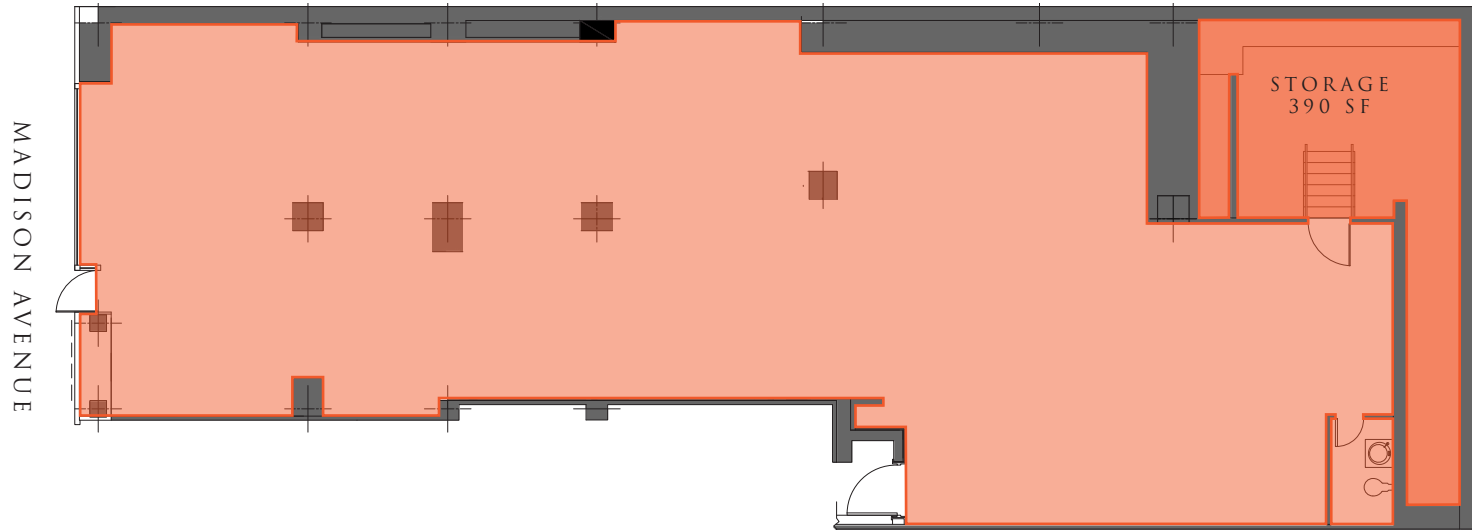
CEILING HEIGHTS: *15' 5"*

POSSESSION: *Immediate*

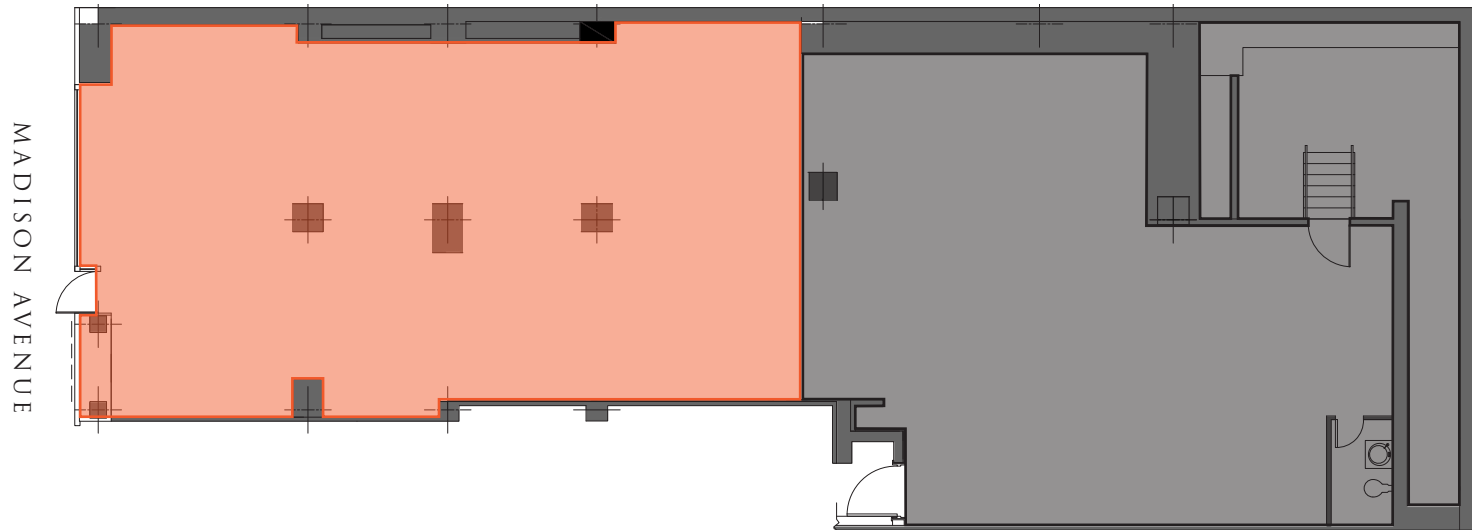
HIGHLIGHTS:

- Situated in heart of the Plaza District amongst the best in class retail, restaurants, office, hotels, and residential
- Ability to re-create the storefront
- Space is entirely open and in white box condition with HVAC and restroom in place
- Potential to divide the space in the rear, creating a jewel box that does not compromise the frontage
- Ability to deliver up to 10,500 SF of lower level space
- Most uses considered

GROUND FLOOR - EXISTING (2,853 SF)



GROUND FLOOR - PROPOSED DIVISION (1,460 SF)





<p>EAST 57TH STREET</p> <p>Dior</p> <p>Bonhams</p> <p>FIFTH AVENUE</p>	<p>PARK AVENUE</p> <p>E FENDI</p> <p>BREITLING</p> <p>TUMI</p> <p>OLIVER PEOPLES MUSKA MILANO</p> <p>FIRST REPUBLIC BANK</p>
<p>EAST 56TH STREET</p> <p>GRACIOUS HOSPITALITY MANAGEMENT</p>	<p>MADISON AVE</p> <p>551 MADISON AVENUE</p> <p>FORWARD PROPER FOOD</p> <p>ROBERT MARC NYC ALLEN EDMONDS <small>PORT WASHINGTON</small></p>
<p>EAST 55TH STREET</p> <p>GS</p> <p>Grand Seiko CAVIAR RUSSE</p> <p>G/FORE</p> <p>THE PERSIAN SHOP, INC.</p>	<p>WELLS FARGO CENTER</p> <p>carlton fine arts</p> <p>RIMOWA</p> <p>U-BOAT IWC <small>SCHAFFHAUSEN</small></p>
<p>EAST 54TH STREET</p> <p>REISS RHONE</p> <p>Barberino's</p> <p>EREDIPISANO <small>ROMA - ITALY</small></p> <p>birddogs</p> <p>SEPHORA</p>	<p>EILEEN FISHER</p> <p>ZADIG & VOLTAIRE</p> <p>Davidoff of Geneva</p>
<p>EAST 53RD STREET</p> <p>BUCHERER</p> <p>1888</p>	<p>CARMINA <small>SHOEMAKER</small></p> <p>BREMONT</p> <p>K. MINAMOTO</p> <p>J.PRESS</p> <p><small>EST. 1847</small> <i>Heritage Gold</i></p> <p>JOHNSTON & MURPHY</p>
<p>EAST 52ND STREET</p> <p>BONOBOS</p> <p>UNTUCKit</p> <p>NEUHAUS</p> <p>PARDY <small>INC. OPTICIANS</small></p> <p>MEPHISTO <small>WORLD'S FINEST FOOTWEAR</small></p> <p>INDOCHINO <small>MADE TO MEASURE</small></p>	<p>Mobile <small>BAUMAN RARE BOOKS</small></p> <p>JORDO</p> <p>Hive & Colony™ We Suit You</p> <p><i>Cha Cha</i> <small>MATCHA</small></p>



THE HEART OF
THE PLAZA DISTRICT

FOR MORE INFORMATION,
PLEASE CONTACT:

ZACH NATHAN

240.731.8333 | ZNathan@ksrny.com

BRANDON BERGER

646.236.8525 | BBerger@ksrny.com

MARC SITT

646.869.5528 | MSitt@ksrny.com

