



*598 Miles View Drive, Mills River, NC 28759*



THE  
REAL  
ESTATE  
CENTER

SPECIALIZING IN ASHEVILLE'S URBAN MARKET

**WEBSITE**

**Greg Palombi**

Cell: 828-216-4037

Office: 828-255-4663

gp@realasheville.net

159 S Lexington

Asheville, NC 28801

www.recenter.com

# PROPERTY FEATURES

## 598 MILES VIEW DRIVE, MILLS RIVER, NC 28759

Unique Development Opportunity Along the French Broad River This exceptional property features two residential homes, a barn, two ponds, and valuable frontage along the French Broad River. Ideally located in Mills River with close proximity to the Asheville Airport, this site offers a rare combination of natural beauty and strategic access. Zoning can be reverted to MR-LI (Light Industrial), making it an ideal candidate for light manufacturing, warehousing, or other industrial uses. The setting offers the potential for a unique corporate campus or business park, with inspiring mountain views, water features, and a location that supports both employee satisfaction and operational convenience. Whether you're looking to create a dynamic work environment or invest in a versatile tract with strong future potential, this property offers a compelling mix of features and flexibility.

## PROPERTY INFO

**Listing Price: \$2,000,000**

**Parcel ID: 801988**

**County: Henderson**

**Sqft: 2,263**

**Acres: 14.96**

**Zoning: MR-LI**



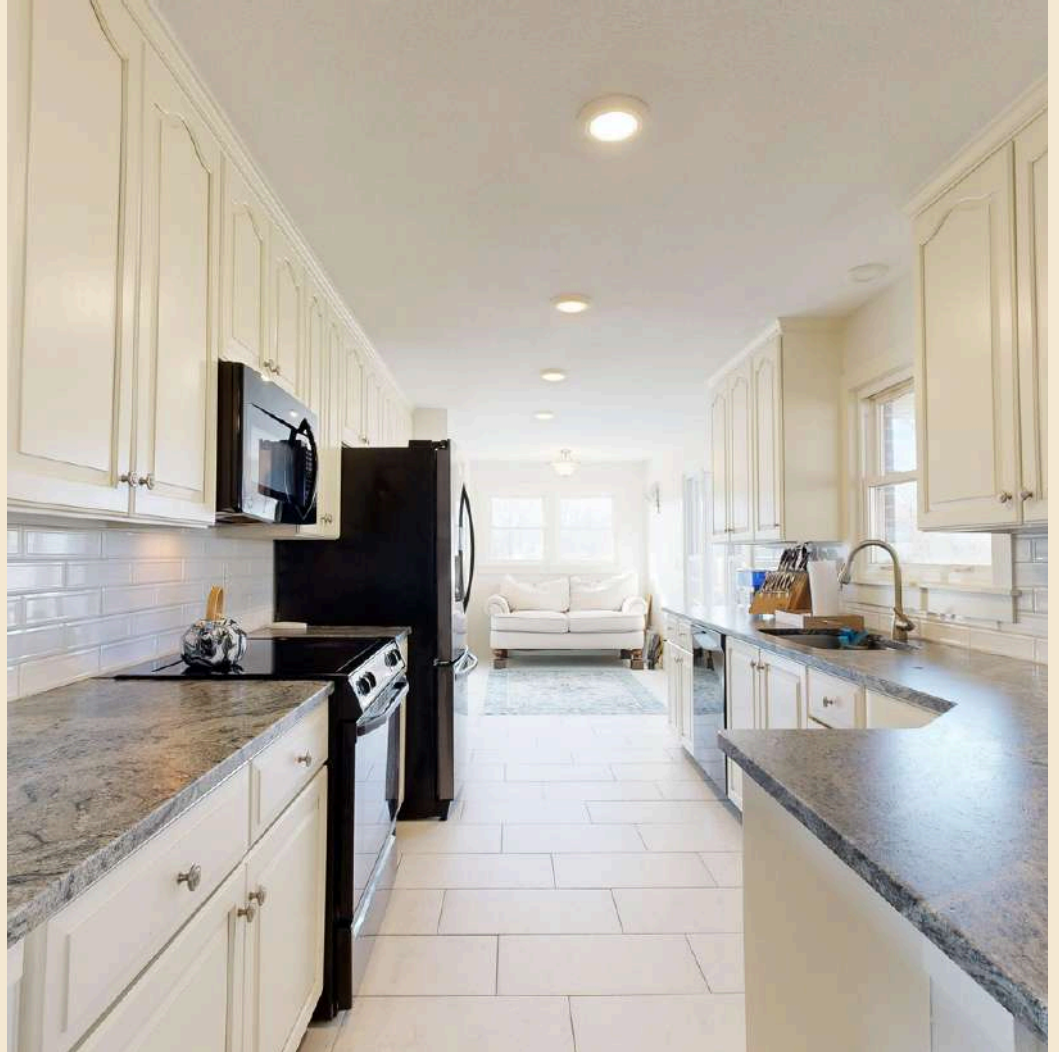


# 598 MILES VIEW DRIVE, MILLS RIVER, NC 28759





# 598 MILES VIEW DRIVE, MILLS RIVER, NC 28759



# 598 MILES VIEW DRIVE, MILLS RIVER, NC 28759





# 598 MILES VIEW DRIVE, MILLS RIVER, NC 28759





# 598 MILES VIEW DRIVE, MILLS RIVER, NC 28759





# 598 MILES VIEW DRIVE, MILLS RIVER, NC 28759





# 598 MILES VIEW DRIVE, MILLS RIVER, NC 28759





# 598 MILES VIEW DRIVE, MILLS RIVER, NC 28759





# 598 MILES VIEW DRIVE, MILLS RIVER, NC 28759

