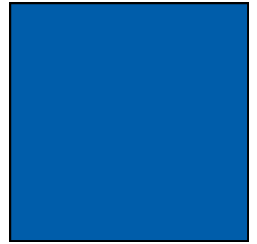


# OFFICE/RETAIL FOR LEASE

*4734 Dixie Hwy, Louisville, KY*



- 1,200 to 1,680± SF
- Former insurance office for over 25 years
- First floor space offers large reception area, 3 offices, restroom and kitchen
- Second floor offers open, clear space
- Unfinished lower level for storage
- Lots of windows throughout
- Zoning is C-1
- Prime location with over 50,000 cars per day
- Double sided and double cabinet signage on Dixie Highway
- For Lease: \$2,000 per month

**Rhonda Karageorge, CCIM, SIOR**  
(502) 744-9175  
(502) 379-6003  
[rk@ccre.biz](mailto:rk@ccre.biz)

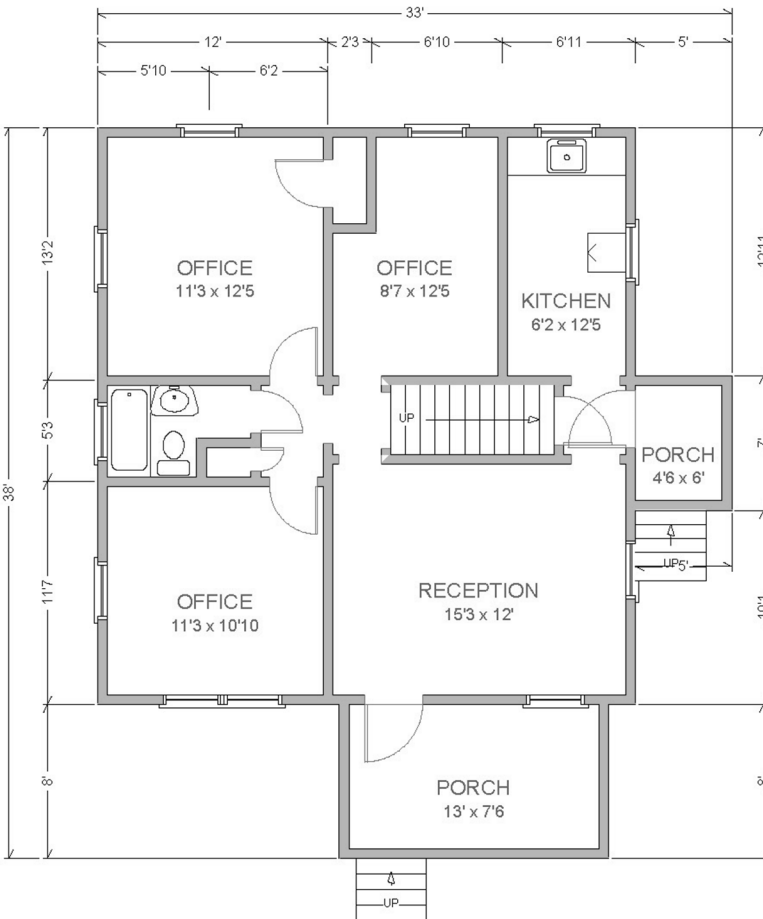
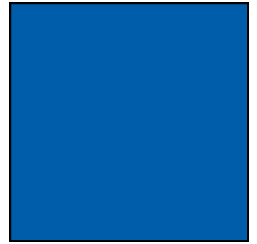


Commonwealth Commercial Real Estate, 10444 Bluegrass Parkway, Louisville, Kentucky 40299  
Phone: (502) 379-6000 | [www.ccre.biz](http://www.ccre.biz) | Licensed in Kentucky and Indiana

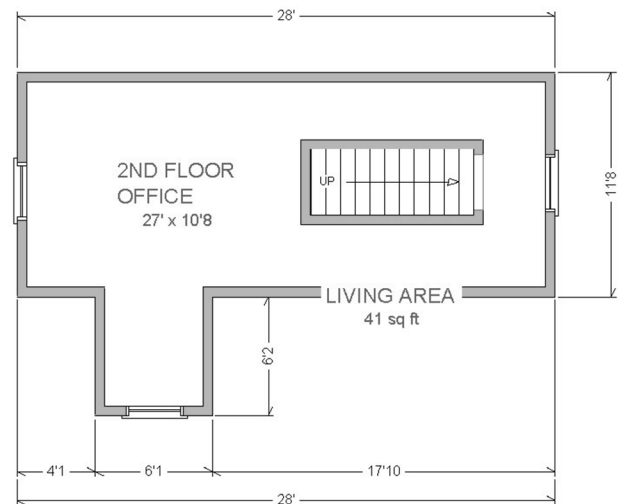
We obtained this information from sources we believe are reliable, however, we make no guarantee, warranty or representation about it. It is provided subject to the possibility of errors, omissions, change of price, rental or other conditions, prior sale, lease or financing, or withdrawal without notice. Images or plans presented are not architectural or "as built" drawings and are presented to give an approximation of space/dimensions and, therefore, no warranty or representation, express or implied, is made to their accuracy. It is your responsibility to independently verify that the property is acceptable to you and for your intended use.

# OFFICE/RETAIL FOR LEASE

4734 Dixie Hwy, Louisville, KY



No warranty or representation, express or implied, is made to the accuracy of the information contained herein, and same is submitted subject to errors, omissions, or conditions imposed by principals



**Rhonda Karageorge, CCIM, SIOR**  
(502) 744-9175  
(502) 379-6003  
rk@ccre.biz



Commonwealth Commercial Real Estate, 10444 Bluegrass Parkway, Louisville, Kentucky 40299  
Phone: (502) 379-6000 | [www.ccre.biz](http://www.ccre.biz) | Licensed in Kentucky and Indiana

We obtained this information from sources we believe are reliable, however, we make no guarantee, warranty or representation about it. It is provided subject to the possibility of errors, omissions, change of price, rental or other conditions, prior sale, lease or financing, or withdrawal without notice. Images or plans presented are not architectural or "as built" drawings and are presented to give an approximation of space/dimensions and, therefore, no warranty or representation, express or implied, is made to their accuracy. It is your responsibility to independently verify that the property is acceptable to you and for your intended use.