



570 S. Trade Street

Tryon, North Carolina 28782

Property Highlights

- ±3,396 SF bank building with covered drive-thru
- Highly visible location on the main corridor of Tryon (US-176/Trade Street)
- Masonry construction with brick/stone exterior
- Tile & carpeted flooring
- Open lobby area, teller stations & private offices
- Vault in place
- Lighted parking lot with ±30 parking spaces
- ±1.0 Acre lot
- Polk County tax map T9-A6
- Located in the foothills of the Blue Ridge Mountains
- Community known for its equestrian culture and vibrant arts scene
- ±4.5 miles from I-26 & ±5.0 miles from US-74

Offering Summary

| | |
|-----------------------|------------|
| Sale Price: | \$530,000 |
| Building Size: | ±3,396 SF |
| Lot Size: | ±1.0 Acres |

For More Information

Earle Furman, SIOR

O: 864 232 9040
efurman@naiearlefurman.com

Keith Jones, CCIM, SIOR

O: 864 232 9040
keith@naiearlefurman.com

McNeil Epps, CCIM, SIOR

O: 864 232 9040 x5956
mepps@naiearlefurman.com

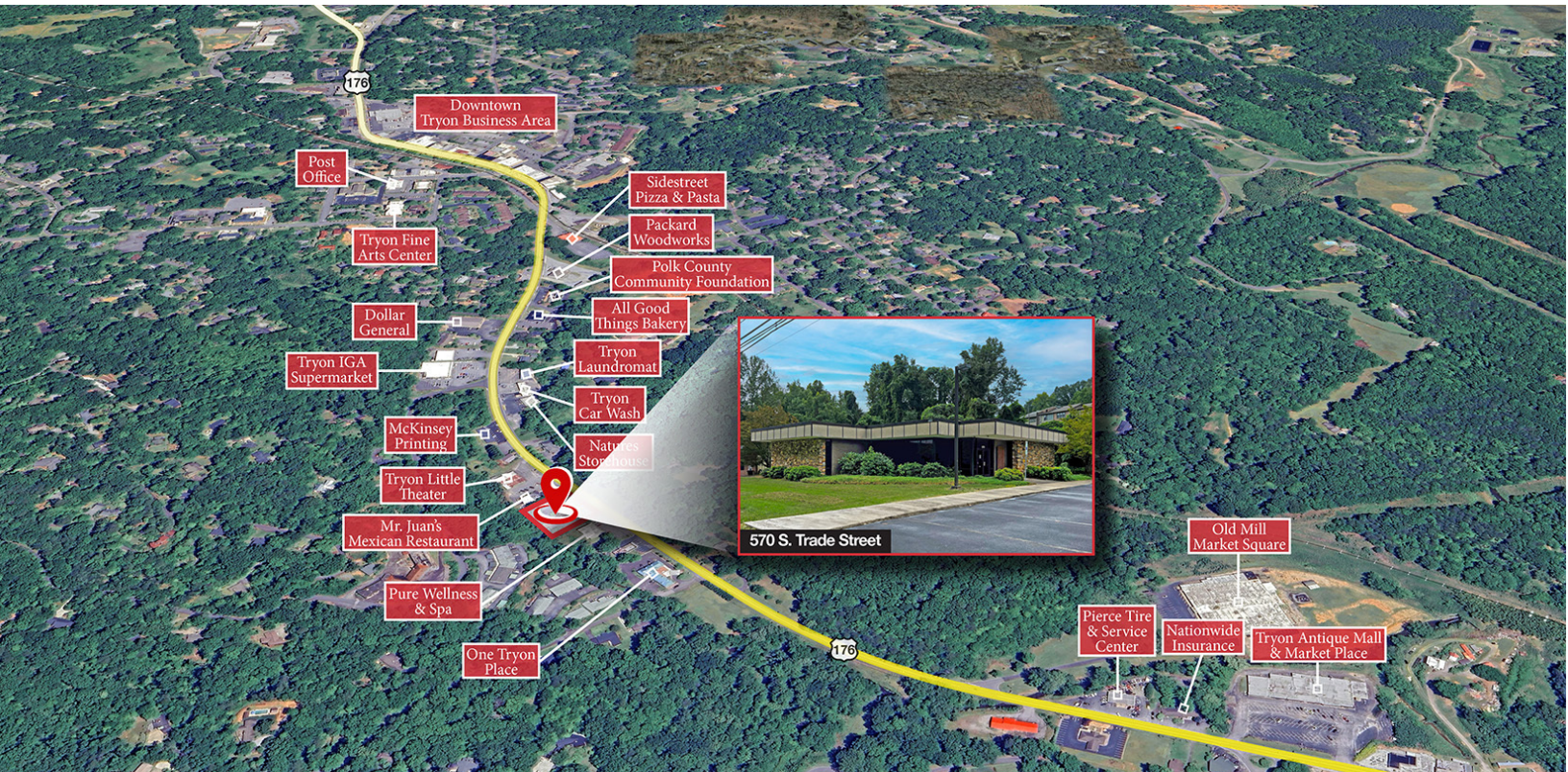
Will Williamson

O: 864 436 6411
wwilliamson@naiearlefurman.com



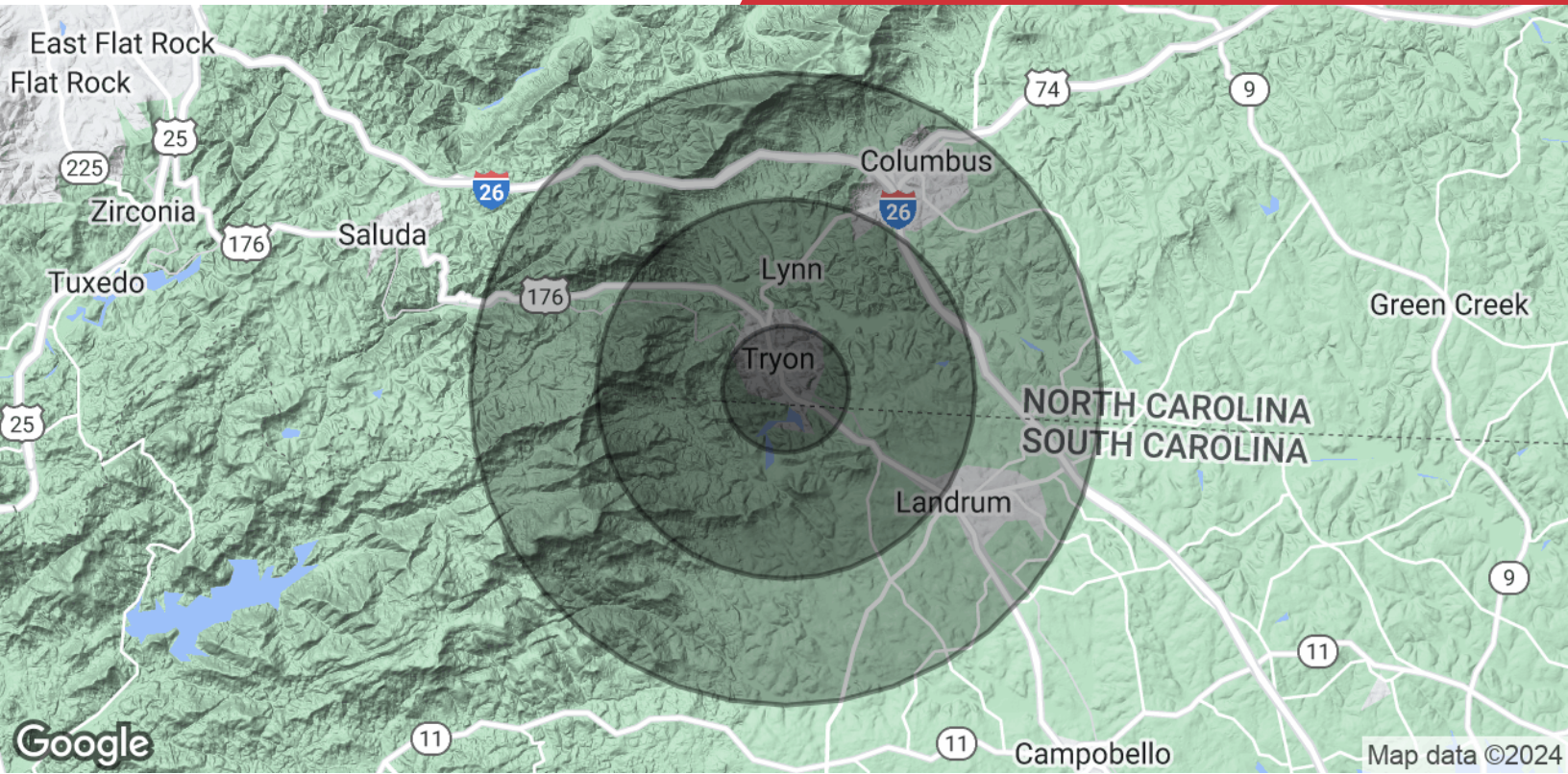
We obtained the information above from sources we believe to be reliable. However, we have not verified its accuracy and make no guarantee, warranty or representation about it. It is submitted subject to the possibility of errors, omissions, change of price, rental or other conditions, prior sale, lease or financing, or withdrawal without notice. We include projections, opinions, assumptions or estimates for example only, and they may not represent current or future performance of the property. You and your tax and legal advisors should conduct your own investigation of the property and transaction.

101 E Washington St, Suite 400
Greenville, SC 29601
864 232 9040 tel
naiearlefurman.com



We obtained the information above from sources we believe to be reliable. However, we have not verified its accuracy and make no guarantee, warranty or representation about it. It is submitted subject to the possibility of errors, omissions, change of price, rental or other conditions, prior sale, lease or financing, or withdrawal without notice. We include projections, opinions, assumptions or estimates for example only, and they may not represent current or future performance of the property. You and your tax and legal advisors should conduct your own investigation of the property and transaction.

101 E Washington St, Suite 400
Greenville, SC 29601
864 232 9040 tel
naiearlefurman.com



| Population | 1 Mile | 3 Miles | 5 Miles |
|-----------------------------|-----------|-----------|-----------|
| Total Population | 715 | 4,382 | 12,070 |
| Average Age | 64.0 | 59.4 | 55.6 |
| Average Age (Male) | 63.9 | 59.1 | 54.9 |
| Average Age (Female) | 64.8 | 60.1 | 56.7 |
| Households & Income | 1 Mile | 3 Miles | 5 Miles |
| Total Households | 510 | 2,679 | 6,834 |
| # of Persons per HH | 1.4 | 1.6 | 1.8 |
| Average HH Income | \$60,513 | \$54,650 | \$55,623 |
| Average House Value | \$276,581 | \$247,990 | \$220,780 |

* Demographic data derived from 2020 ACS - US Census