

FOR SALE
OR LEASE

36500 CORPORATE DRIVE FARMINGTON HILLS, MICHIGAN

125,195 SF



VIEW
VIDEO



For more information, contact:

JOHN BOYD

(248) 948 0102

jboyd@signatureassociates.com

SCOTT ELLIOTT

(248) 948 4182

selliott@signatureassociates.com

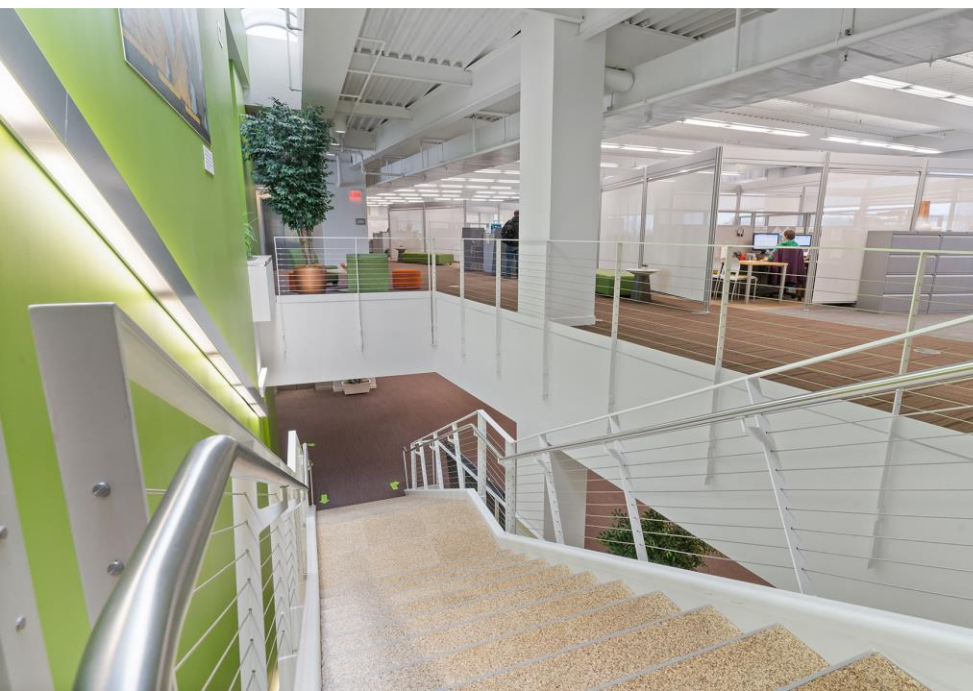


**SIGNATURE
ASSOCIATES**
KNOW SIGNATURE | KNOW RESULTS

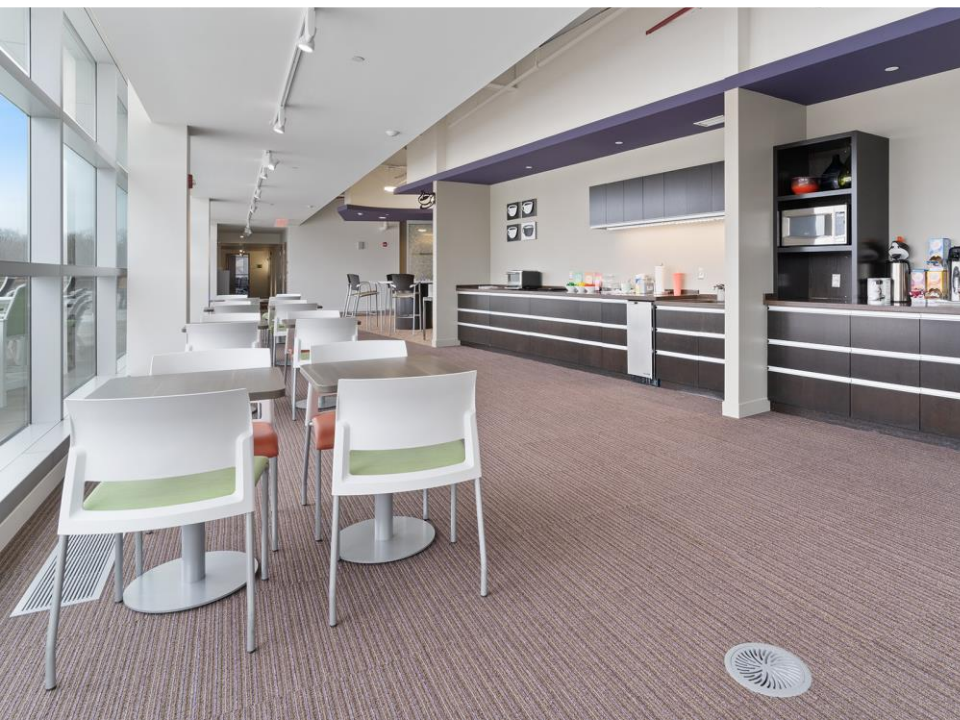


PROPERTY OVERVIEW

- 35,000 – 100,000 square feet available immediately
- 125,195 total building square feet
- Spectacular, first-class office building in prestigious wooded office park setting
- Prime Farmington Hills' location next to Mercedes' and Comerica's new campuses
- Stunning café, conference center, covered parking, and fitness center
- Over 600 parking spaces
- Located on 10.56 acres
- Signage available
- Easy access to I-696/I-275/M-5









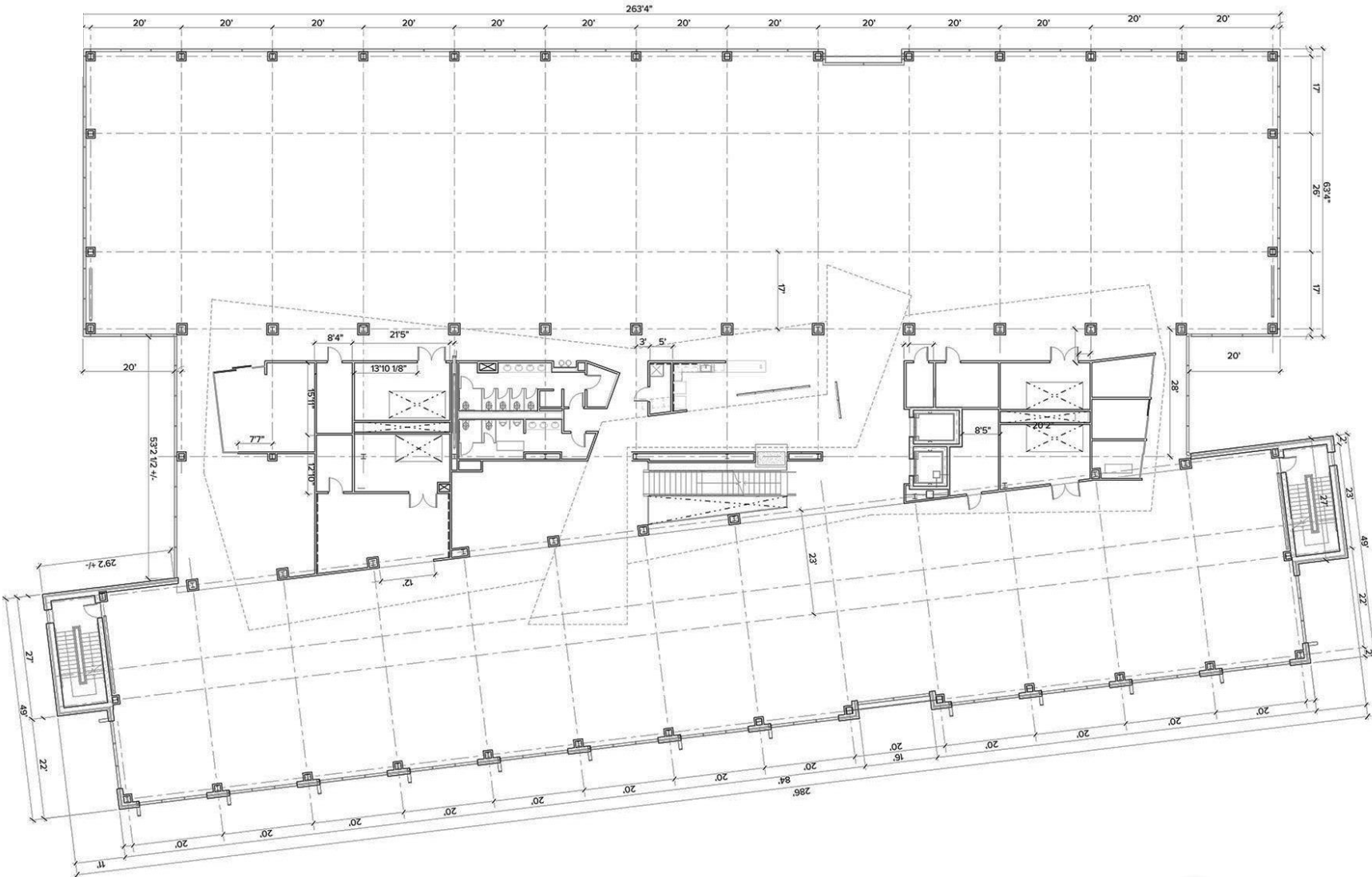
FLOOR PLAN

FIRST FLOOR



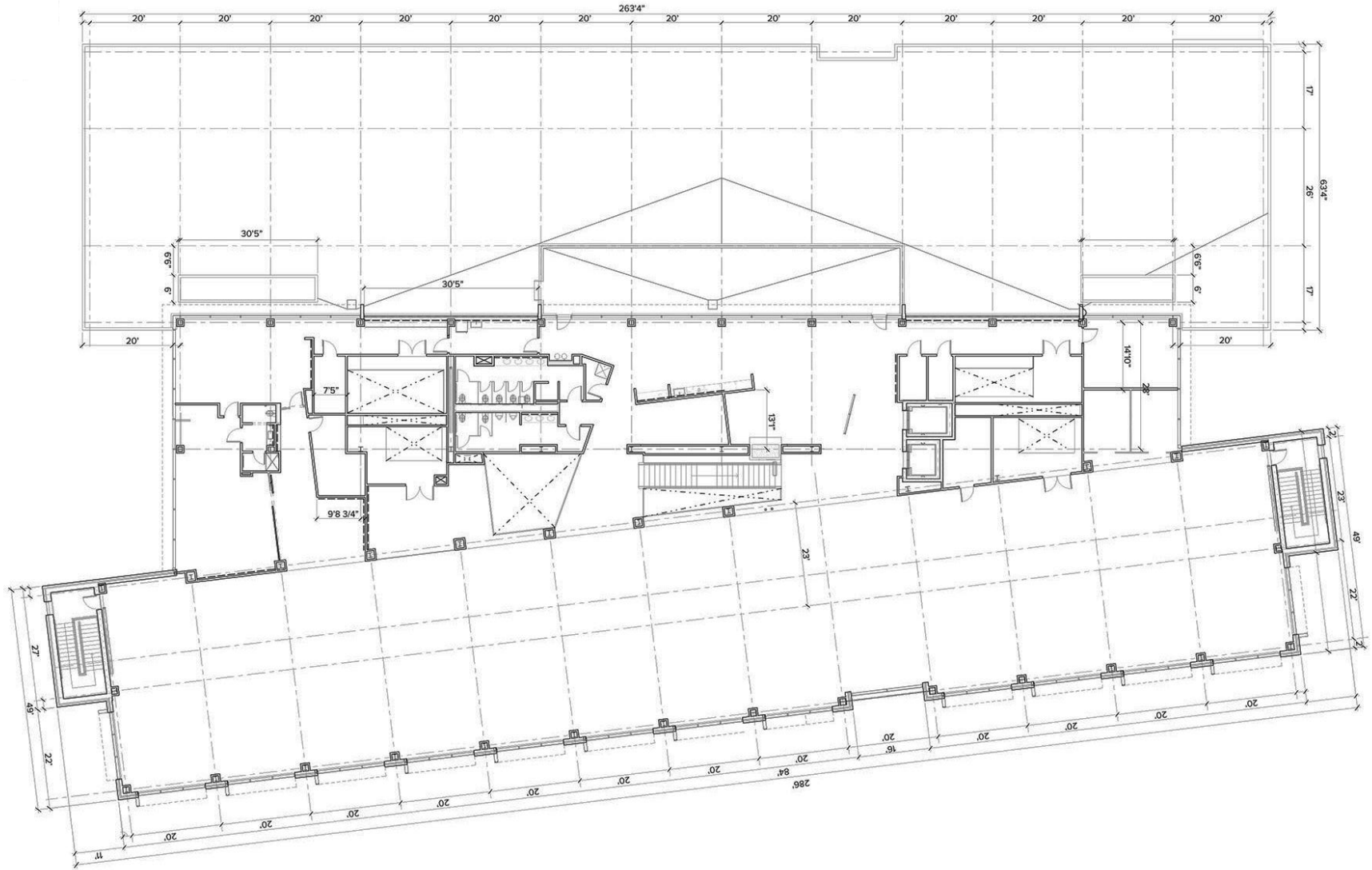
FLOOR PLAN

THIRD FLOOR

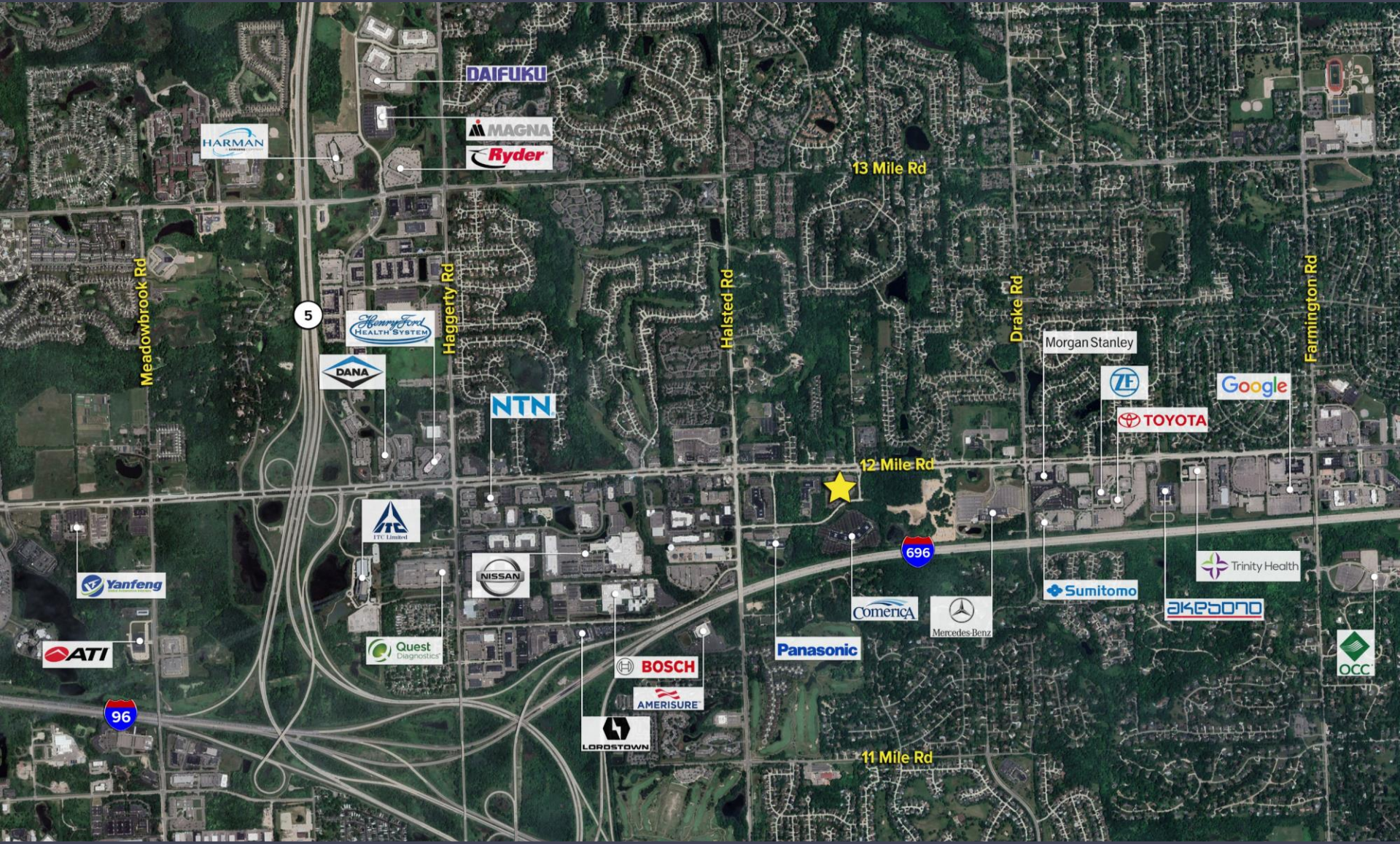


FLOOR PLAN

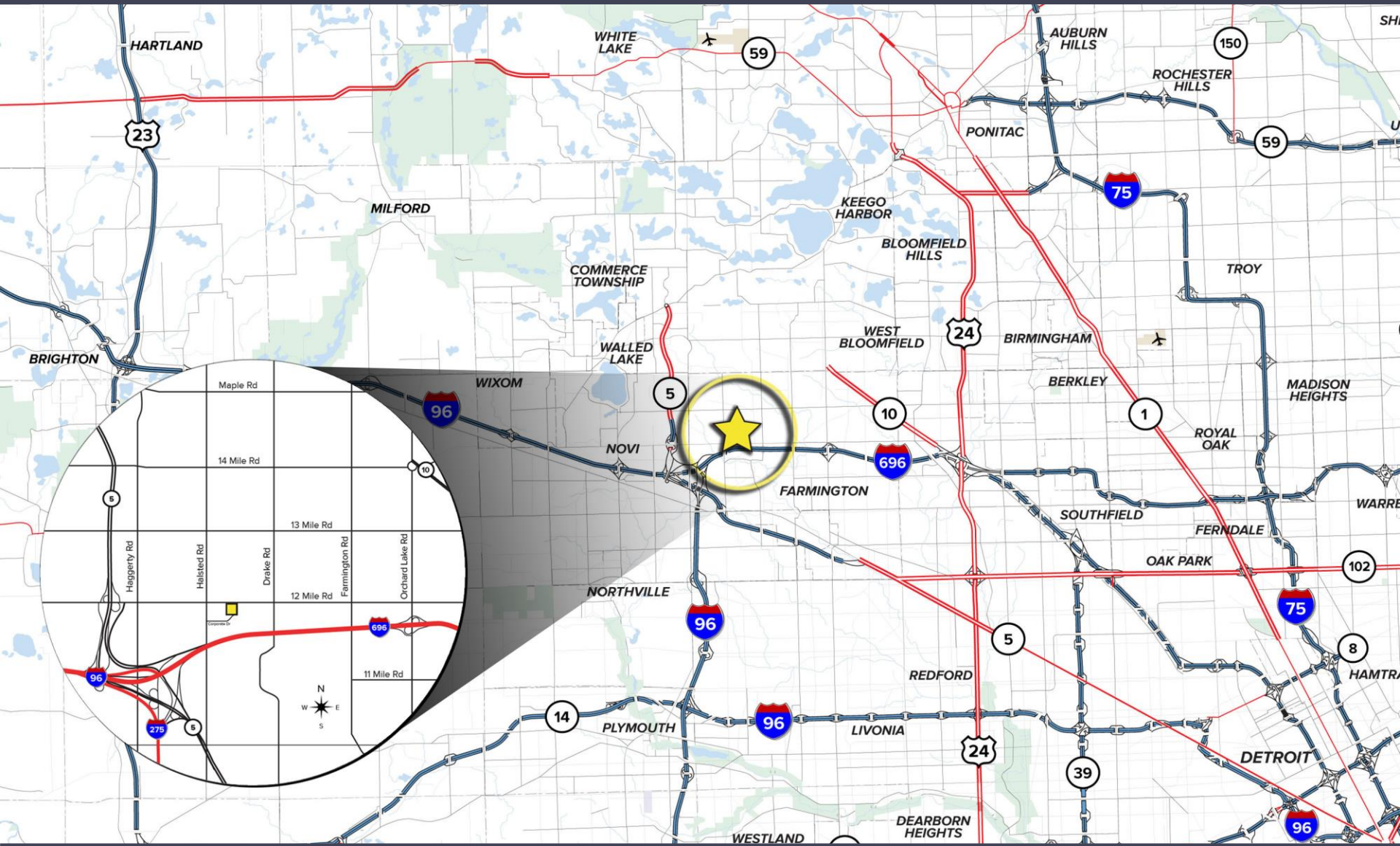
FOURTH FLOOR



SURROUNDING BUSINESSES



EASY ACCESS TO ALL FREEWAYS



12 Mile Rd

For more information, contact:

JOHN BOYD

(248) 948 0102

jboyd@signatureassociates.com

SCOTT ELLIOTT

(248) 948 4182

selliott@signatureassociates.com

Investment Dr

Corporate Dr

Halsted Rd



SIGNATURE ASSOCIATES

One Towne Square, Suite 1200

Southfield, Michigan 48076

(248) 948 9000

www.signatureassociates.com



SIGNATURE ASSOCIATES

KNOW SIGNATURE | KNOW RESULTS

Information is subject to verification and no liability for errors or omissions is assumed. Price is subject to change and listing withdrawal.