

5717 Ferguson

COMMERCE, CA

58,700 SF for Sale or Lease

NEWMARK

Property Details



58,700
BUILDING AREA



2.10 AC (91,591) SF
LAND AREA



6340-017-006
APN



5,500 SF
OFFICE AREA



1965
YEAR BUILT



18' - 22'
CLEAR HEIGHT



4 DH | 1 GL
LOADING



M2
ZONING



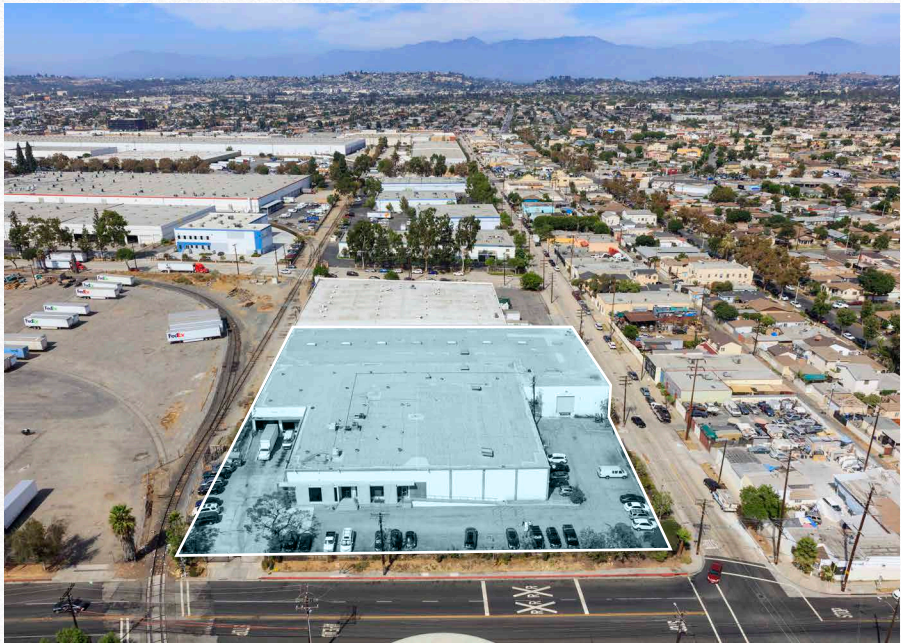
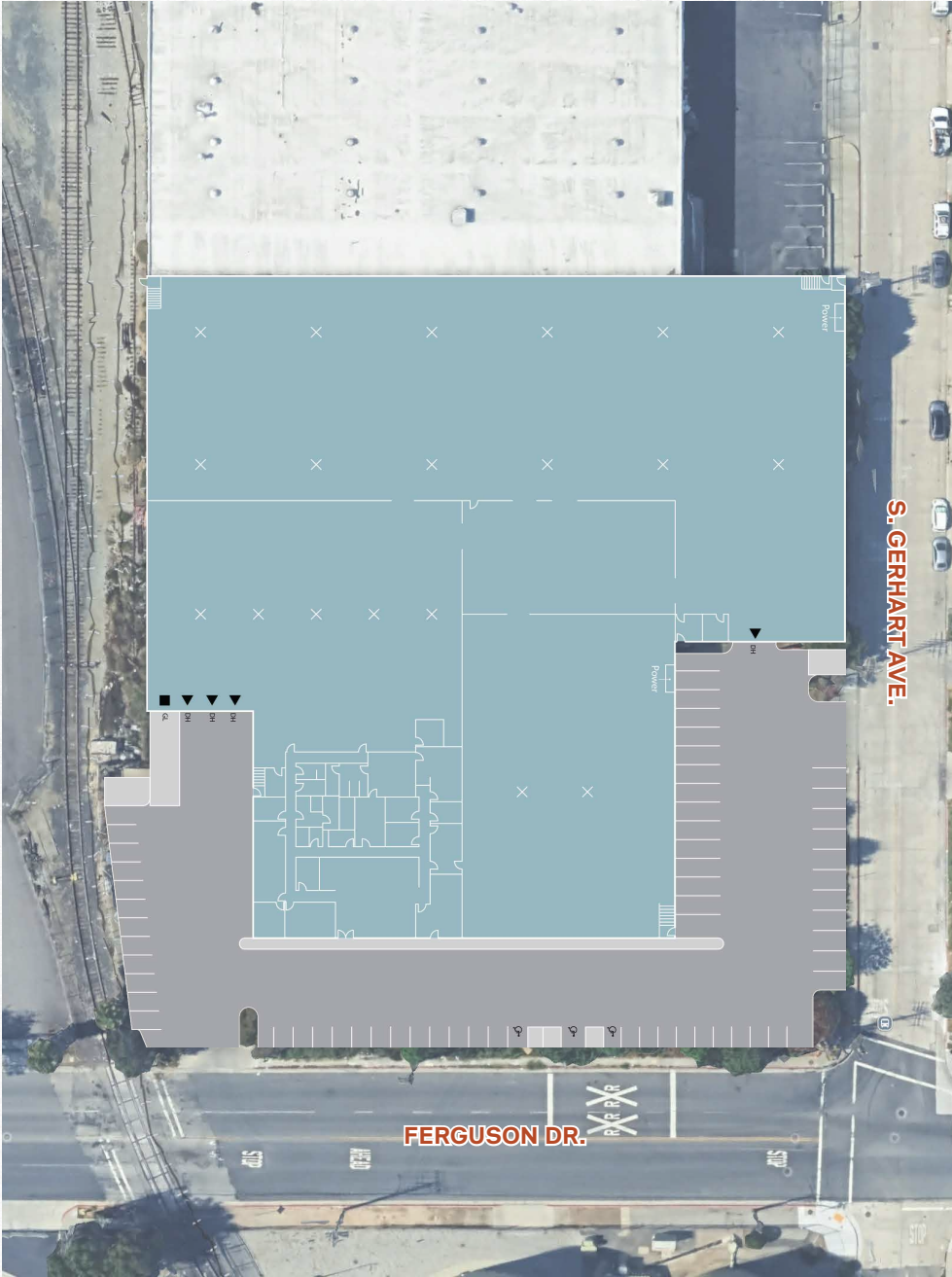
800 Amps
POWER



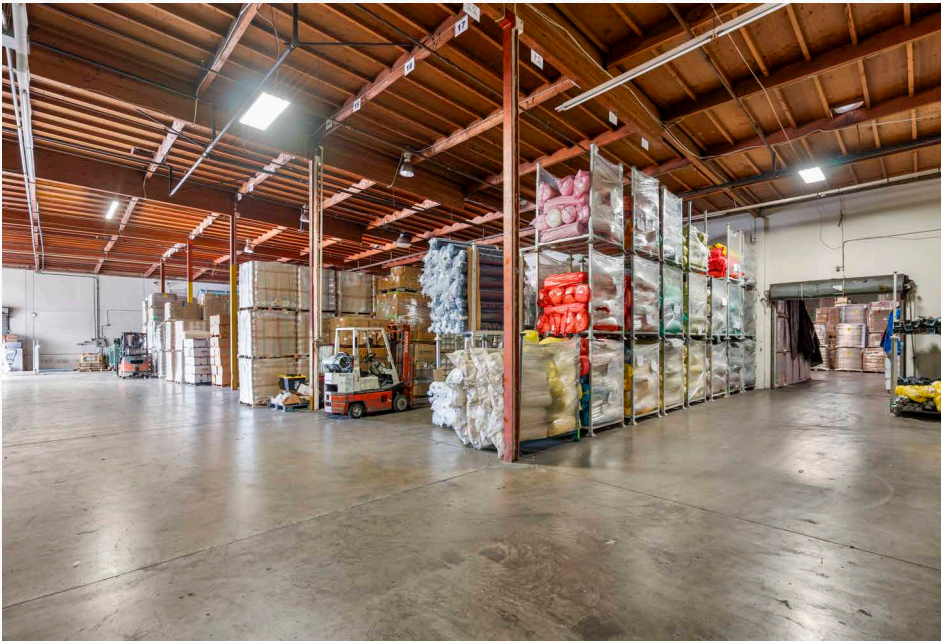
60 Spaces
PARKING



Site Plan



Property Photos



The image is an aerial photograph of Southern California, centered on the Los Angeles area. A red star marks the location of 5717 Ferguson, with a callout box displaying the address. Surrounding the star are several circular icons representing major transportation hubs: Los Angeles International Airport, Burbank Airport, Ontario International Airport, Port of Long Beach, Port of Los Angeles, BNSF Railway, and Union Pacific. Major freeways (Interstates 5, 10, 15, 210, 405, 605, 78, 215) and cities (Palmdale, Santa Clarita, Pasadena, Los Angeles, San Bernardino, Redlands, Yucaipa, Chino, Corona, Anaheim, Santa Ana, Irvine, Huntington Beach, Mission Viejo, Murrieta, Menifee, Perris, Moreno Valley, Riverside, Corona, Chino, San Bernardino, Redlands, Yucaipa, Palmdale, Santa Clarita, Burbank, Pasadena, Los Angeles, Torrance, Compton, Ewood, Santa Monica, Malibu, Lake Los Angeles, El Mirage) are labeled. In the top right corner, a table provides the distance from the subject to various locations.

Location	Distance from Subject
UP Intermodal (Commerce)	2.5 Miles
BNSF Intermodal (Commerce)	3.6 Miles
Port of Long Beach	19.5 Miles
Port of Los Angeles	21.5 Miles
Los Angeles International Airport	22.5 Miles

Location	Distance from Subject
UP Intermodal (Commerce)	2.5 Miles
BNSF Intermodal (Commerce)	3.6 Miles
Port of Long Beach	19.5 Miles
Port of Los Angeles	21.5 Miles
Los Angeles International Airport	22.5 Miles

Freeway Access



5717 Ferguson

COMMERCE, CA

Exclusively Listed By:

Mark Repstad
Executive Managing Director
t 213-596-2282
mark.repstad@nmrk.com
CA RE Lic. #01492673

Rob Castro
Associate
t 657-532-8400
rob.castro@nmrk.com
CA RE Lic. #02169325

NEWMARK

Corporate License #01355491

The information contained herein has been obtained from sources deemed reliable but has not been verified and no guarantee, warranty or representation, either express or implied, is made with respect to such information. Terms of sale or lease and availability are subject to change or withdrawal without notice.