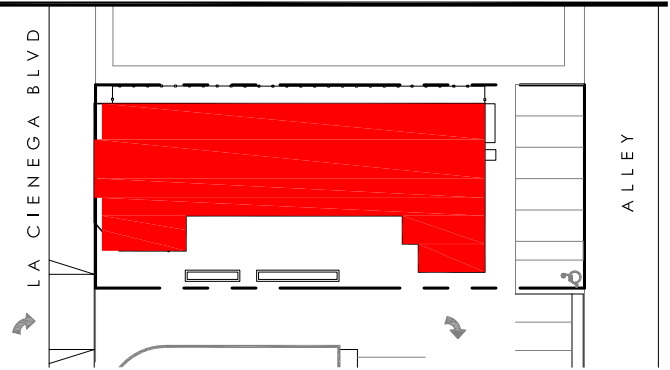


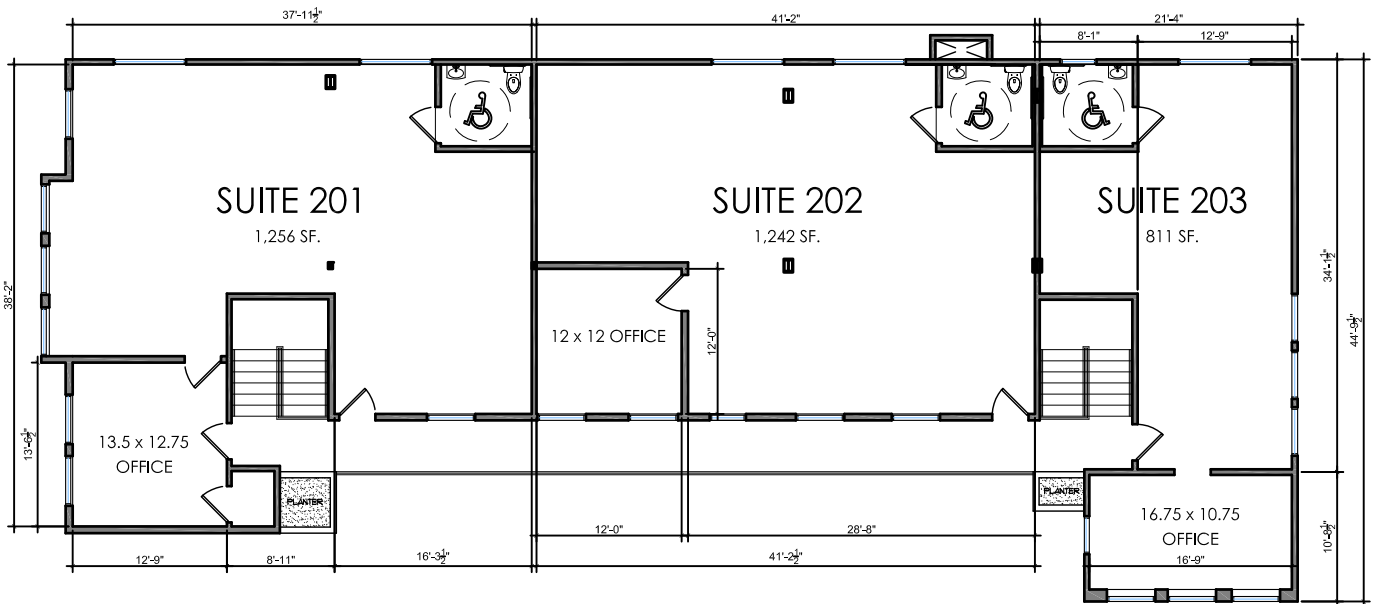
La Cienega Square

1232 LA CIENEGA BLVD.
 SUITE 201
 SUITE 202
 SUITE 203



KEY PLAN / SITE PLAN

Scale: Not to scale



FLOOR PLAN

Scale: Not to scale

For Further Information, please contact:

SEAN HAY: O. 323.650.2000 x211
 C. 310.650.7000
 E. seanhay@emser.com



8431 Santa Monica Blvd., Los Angeles, CA 90069

T 323.650.2000 - F1 775.854.7158 - F2 323.650.5500

OFFICE SPACE

- Usable space: 3,310 SF
- Rentable: 3,832 SF

© 2006 Emser International, LLC. The foregoing is based upon information provided by others which we believe is accurate, however, no guarantee, warranty or representation is made. We recommend that all interested parties independently verify its accuracy and completeness. As well, any projections, assumptions, opinions, or estimates used for example only and do not represent the current or future performance of the identified property. Your tax, financial, legal and toxic substance advisors should conduct a careful independent investigation of the property and its suitability for your needs, including land use limitations. The property is subject to prior lease, sale, change in price, or withdrawal from the market without notice.