

121 HILLPOINTE DRIVE

CANONSBURG, PA 15317



3,291 - 7,585 SF FOR LEASE

PREMIER SOUTHPOINTE OFFICE



- Ground Floor Suites Available
- Full First Floor Available
- Newly Renovated Office Suites
- Building Access 24/7/365
- Free and Convenient Parking
- Walk to Southpointe Town Center
- Sidewalks Throughout Park

KELLEY HECKATHORNE
+1 412 670 4248
khoover@naiburnsscalo.com

NAIBurns Scalo
COMMERCIAL REAL ESTATE SERVICES, WORLDWIDE



First Floor, Suite 700
7,585 SF

- Class A Office Space
- Window Walled Offices
- End Suites with Windows
- 10' Ceilings
- Private, Separate Entrance
- 9 Offices
- 2 Conference Rooms

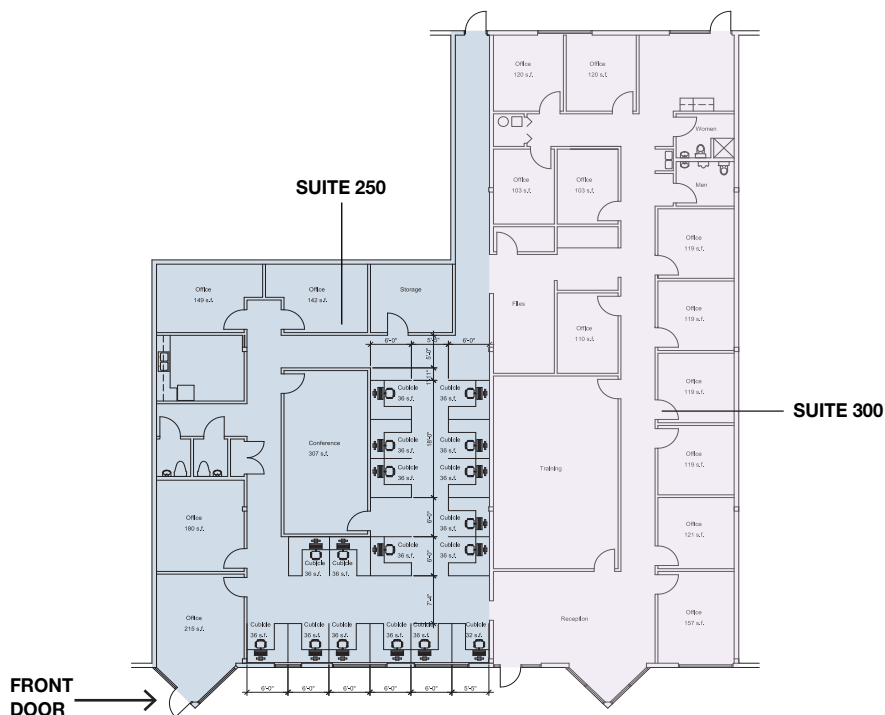
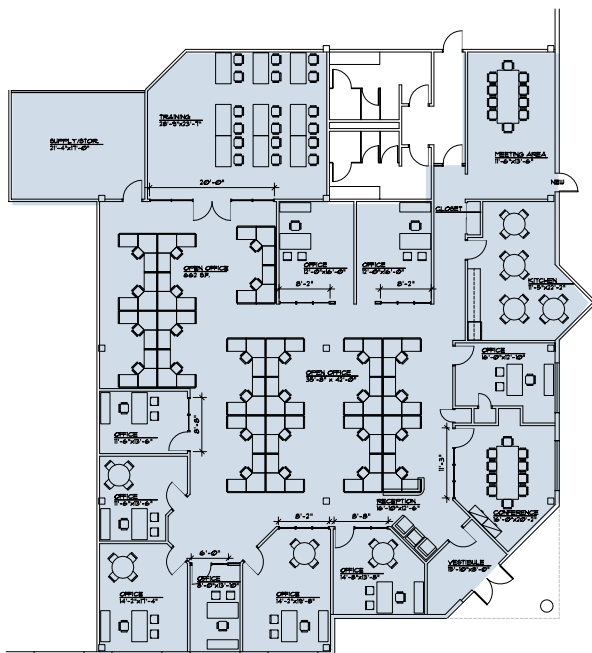
First Floor, Suite 250
3,291 SF

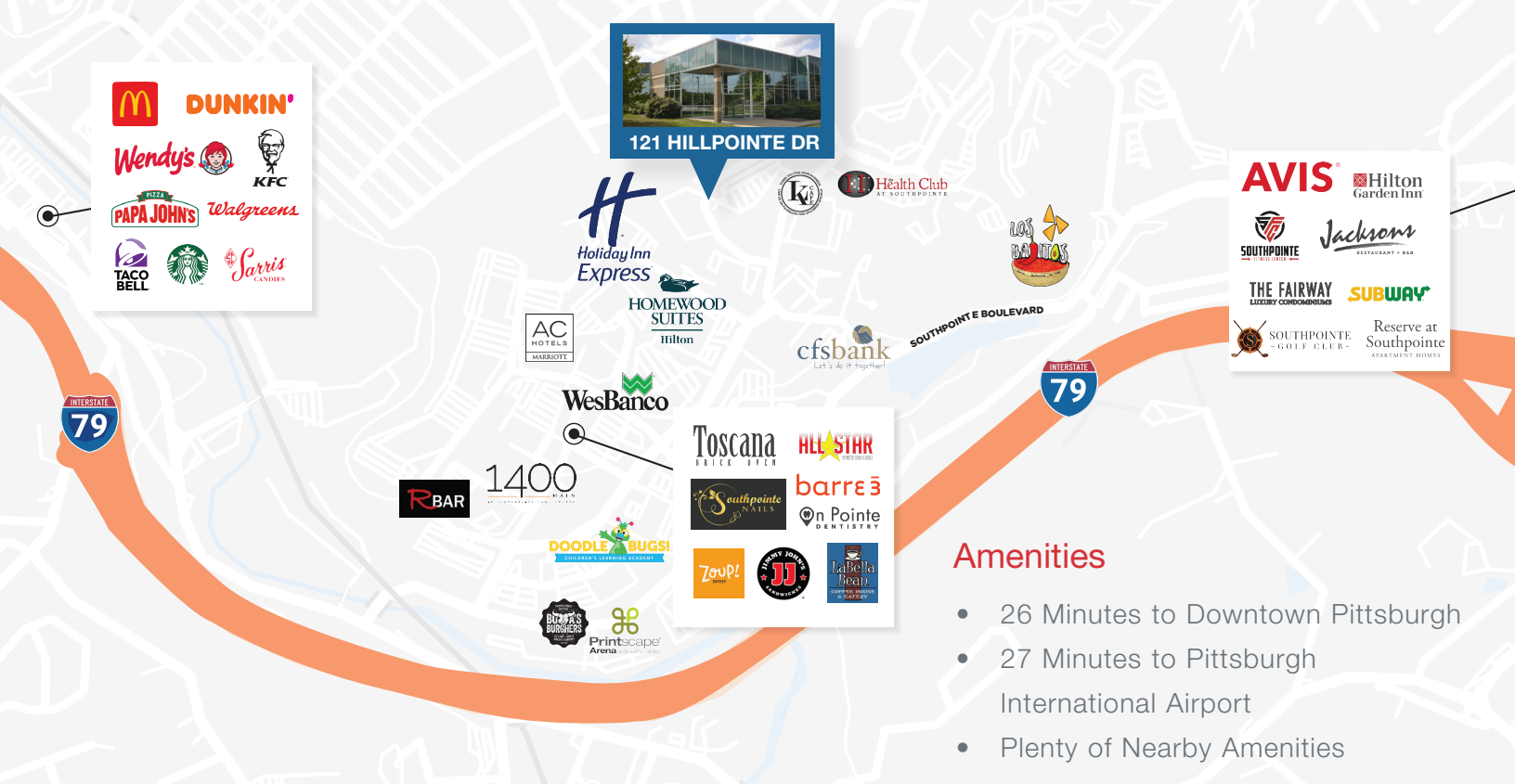
- Newly renovated
- Move-In Ready Suite
- 4 Offices
- Conference Room
- Kitchen
- Private, Separate Entrance
- 10' Ceilings

First Floor, Suite 300
3,650 SF

- 10 Offices
- 2 Conference Rooms
- Training Room
- Private, Separate Entrance
- 10' Ceilings

COMBINED OPTION: 6,941 SF





Amenities

- 26 Minutes to Downtown Pittsburgh
- 27 Minutes to Pittsburgh International Airport
- Plenty of Nearby Amenities



KELLEY HECKATHORNE
 +1 412 670 4248
 khoover@naiburnsscalo.com



COMMERCIAL REAL ESTATE SERVICES, WORLDWIDE