



FOR SALE | OFFICE CONDO

\$199,500.00

1202 Bergen Parkway, Suite 205/206, Evergreen, CO 80439



William A. (Bill) Downes
billdownes@evergreencommercial.net
303.838.2000 x101

Todd Bastian
todd@evergreencommercial.net
303.838.2000 x109

Executive Summary



OFFERING SUMMARY

Sale Price:	\$199,500.00
Office SF:	874
Price / SF:	\$228.26
Year Built:	1982
Zoning:	C
Market:	Denver Foothills
Submarket:	Evergreen

PROPERTY OVERVIEW

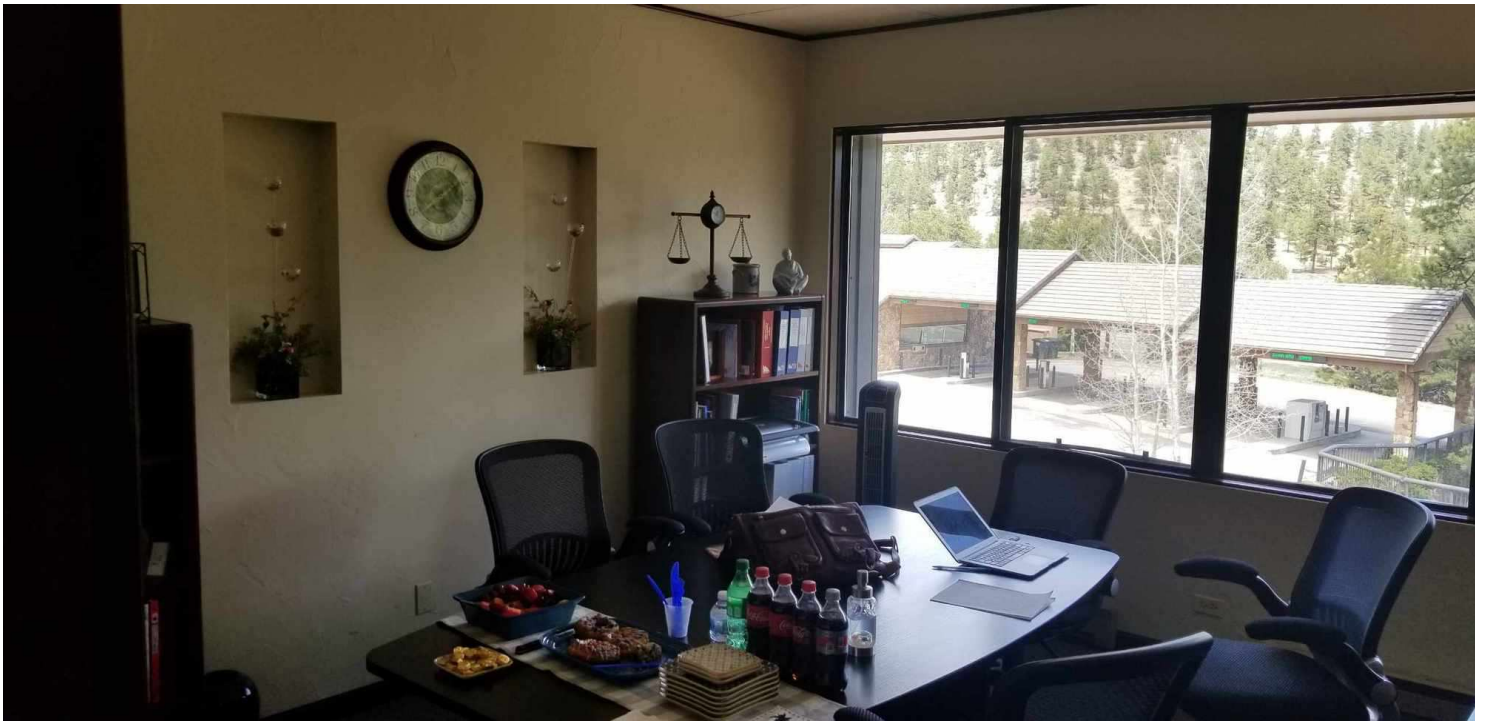
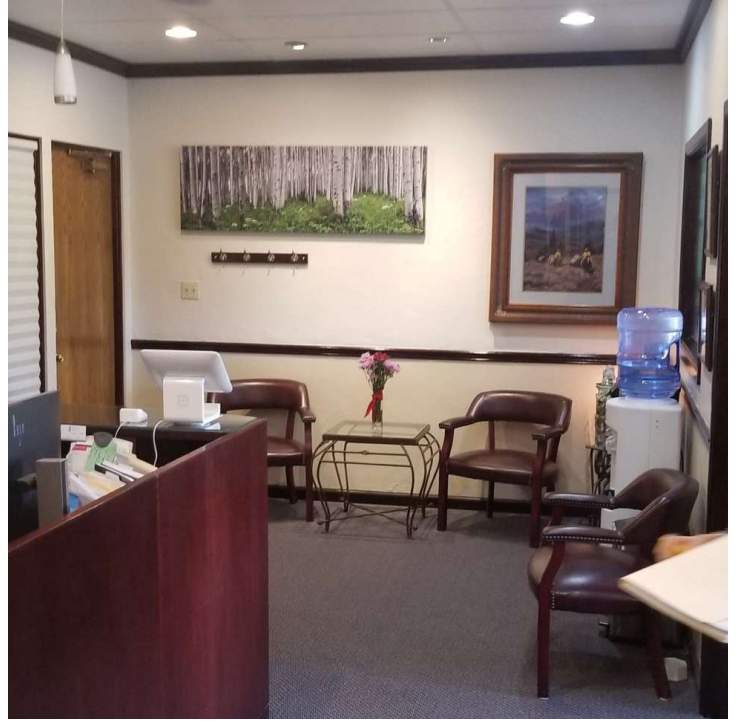
- * See it while you still can, offices are moving!
- * 2 condos combined for large office
- * More economical than leasing
- * 3 offices plus a waiting area
- * Mountain views
- * Built-in reception desk
- * Top quality finishes, very professional
- * One underground parking space included

LOCATION OVERVIEW

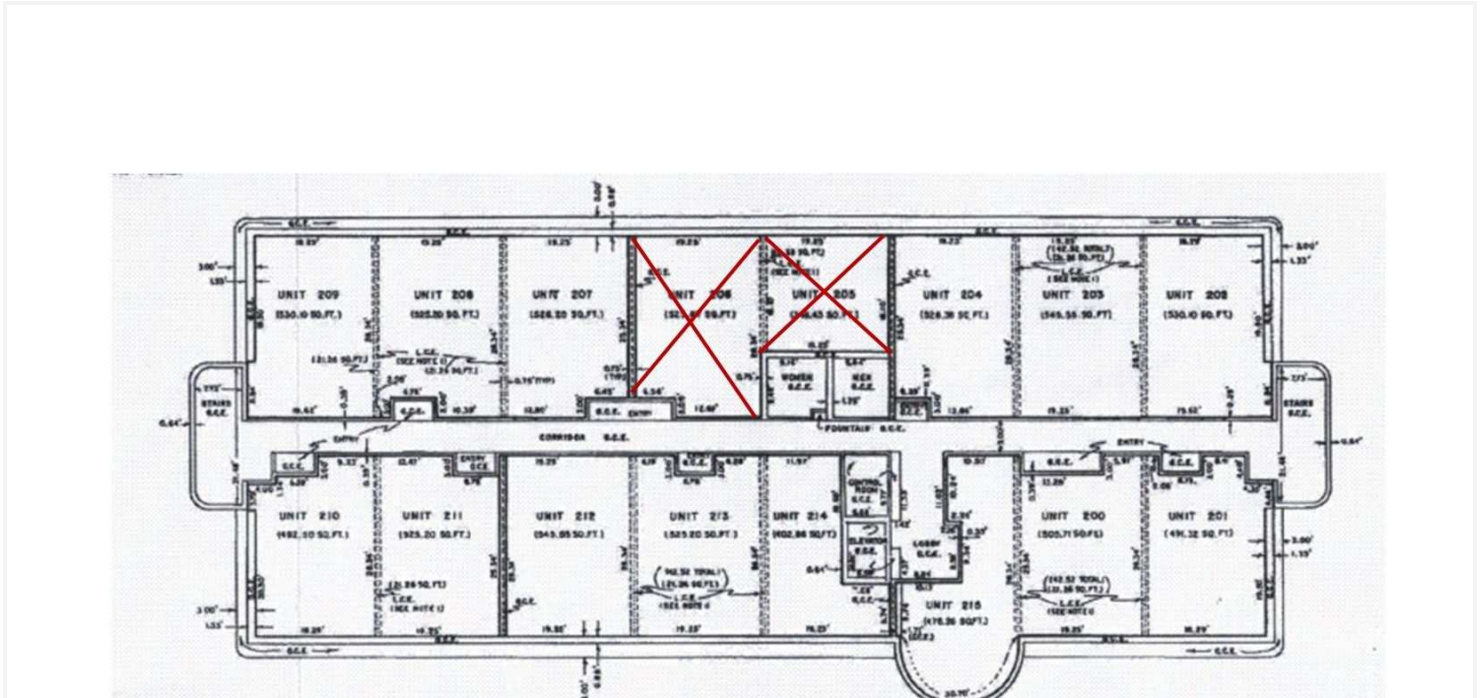
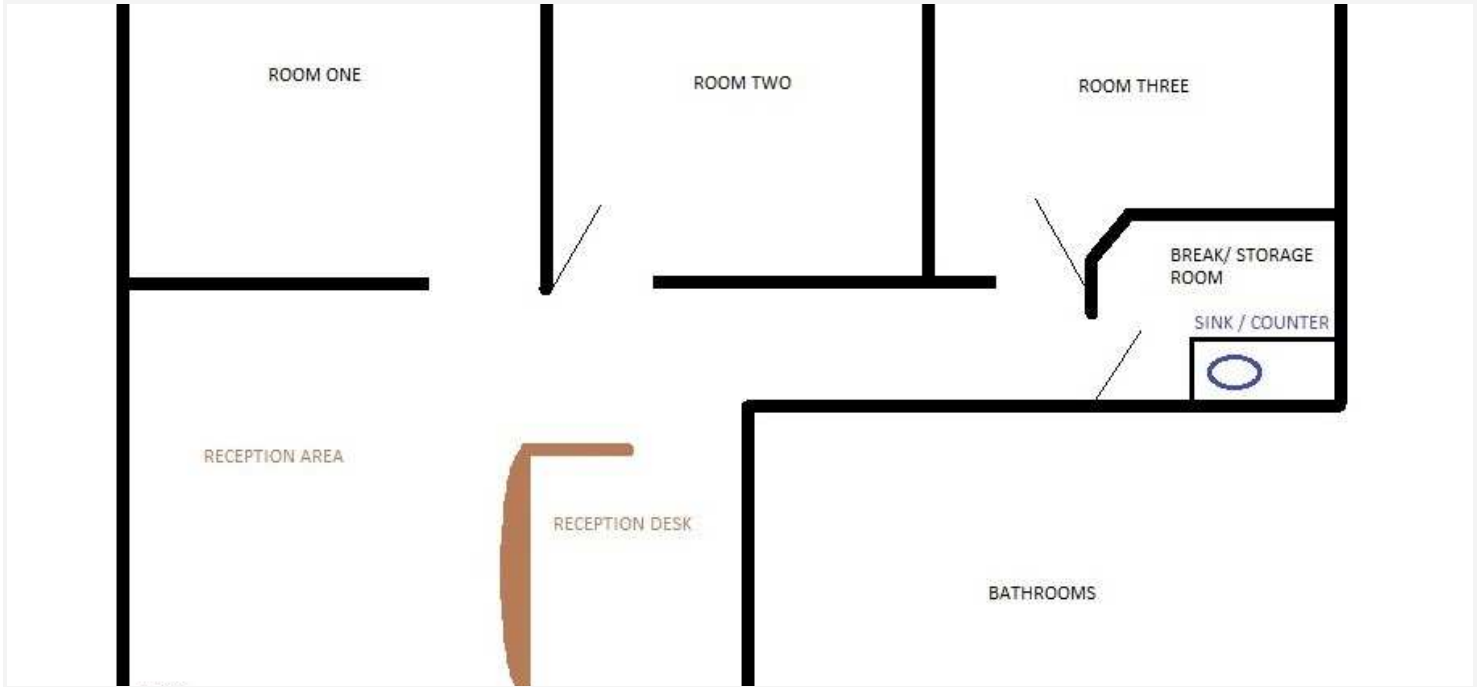
Conveniently located in Bergen Park, just minutes from I-70 and the Metro area.

Located across from King Soopers in Bergen Park, close to shopping, restaurants, banking, entertainment and parks.

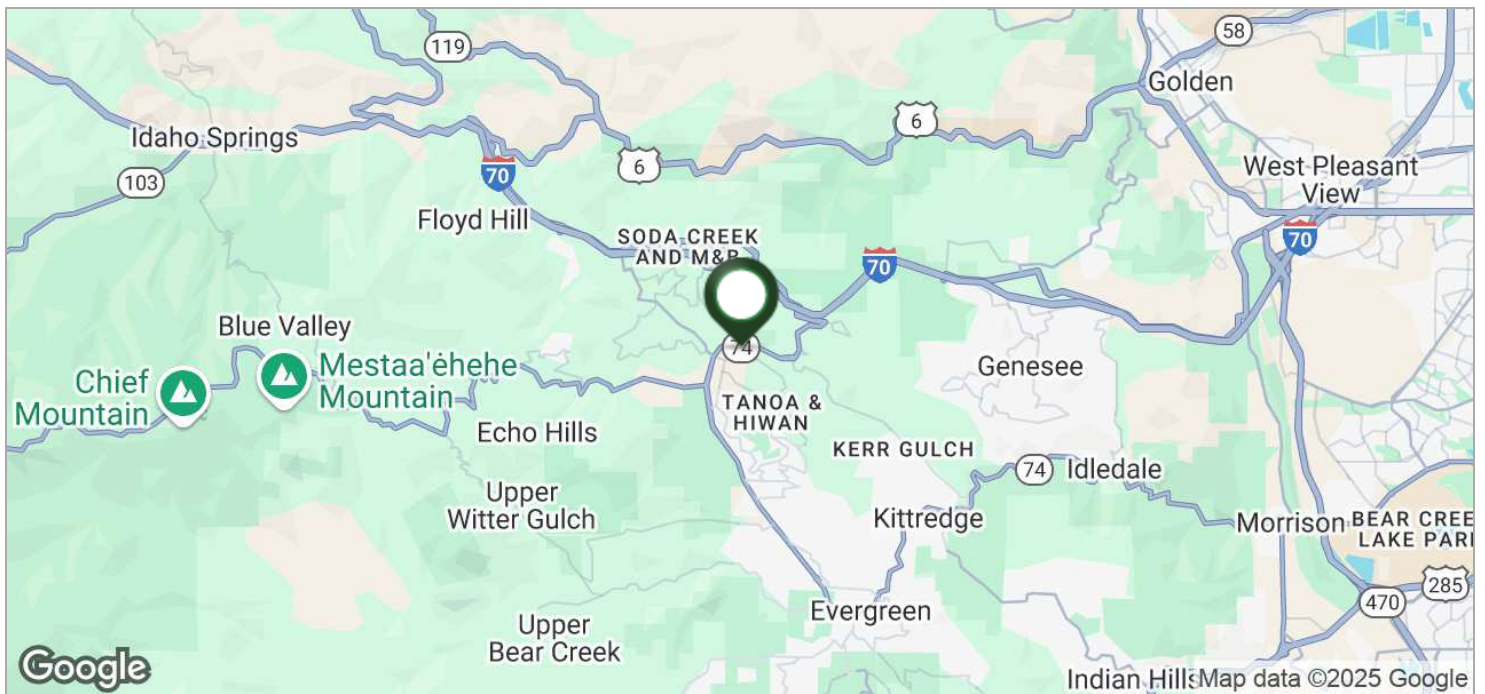
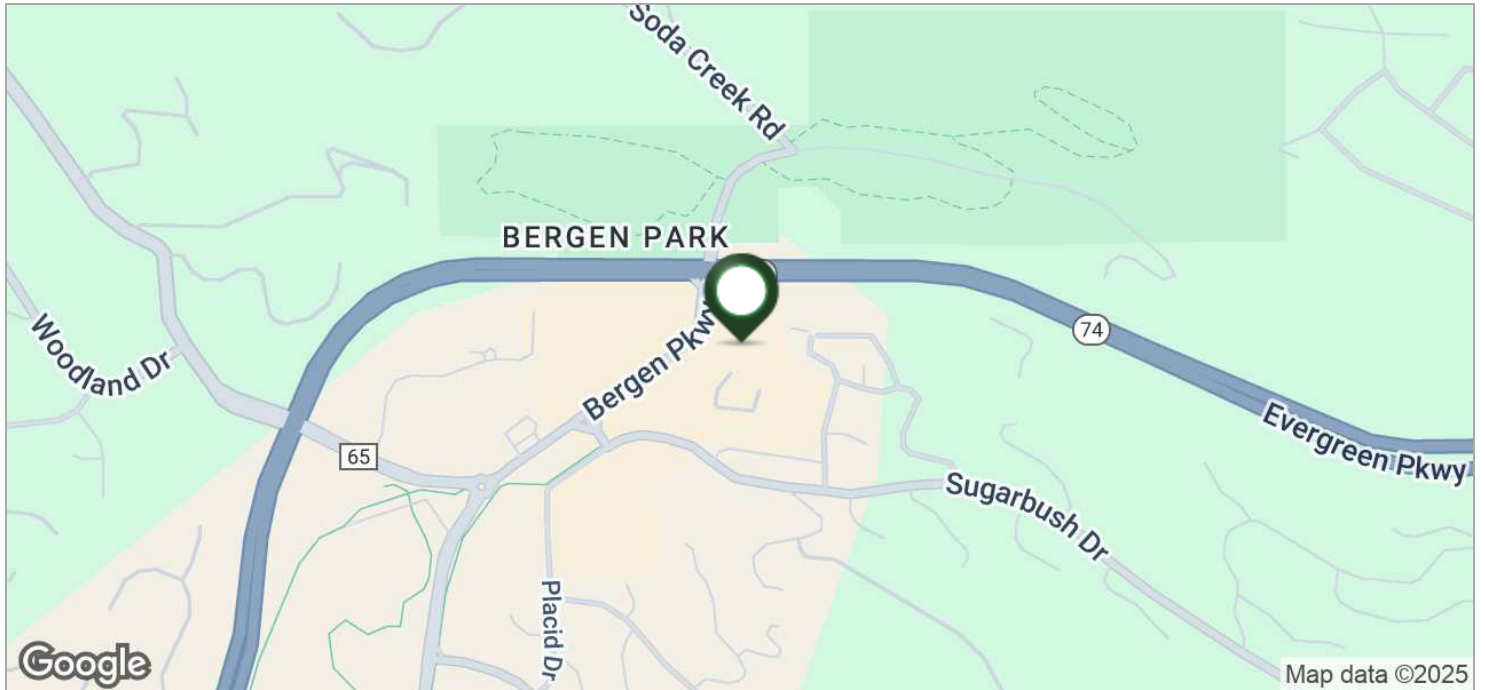
Additional Photos



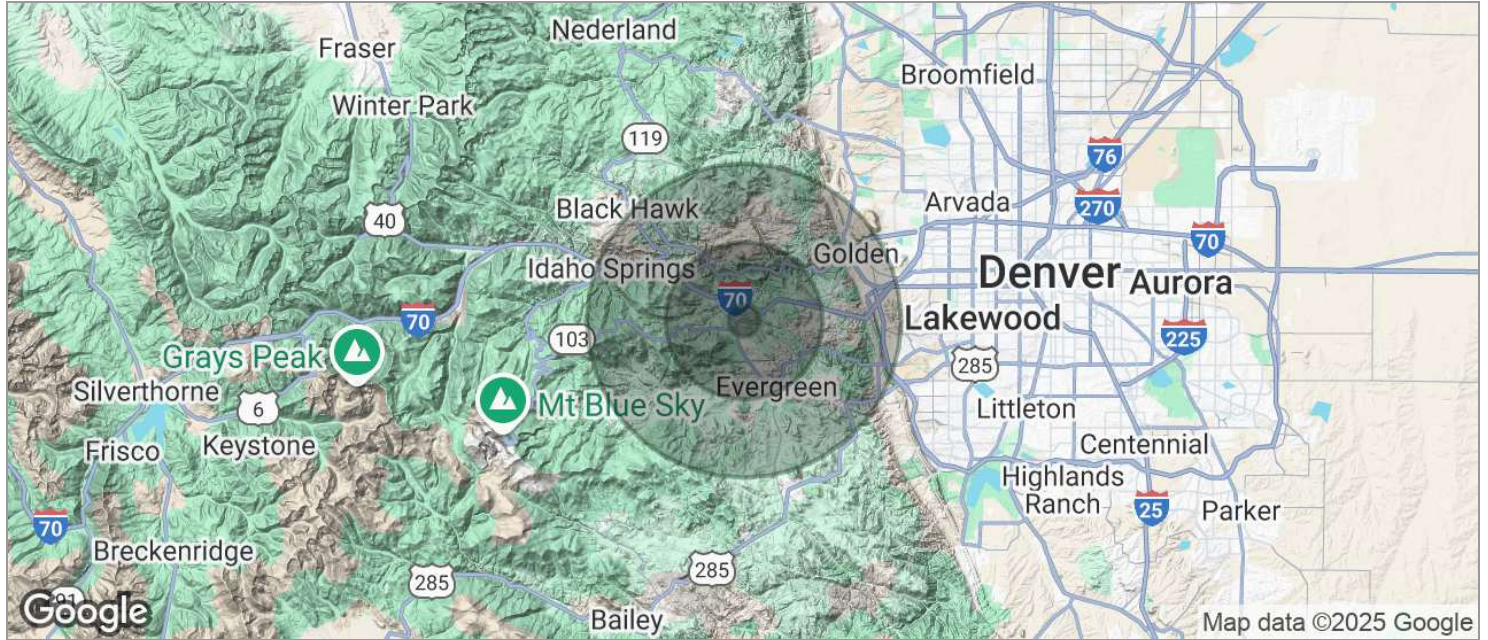
Additional Photos



Location Maps



Demographics Map



POPULATION	1 MILE	5 MILES	10 MILES
TOTAL POPULATION	1,671	18,716	73,343
MEDIAN AGE	46	47	44
MEDIAN AGE (MALE)	45	46	43
MEDIAN AGE (FEMALE)	47	47	45
HOUSEHOLDS & INCOME	1 MILE	5 MILES	10 MILES
TOTAL HOUSEHOLDS	639	7,616	29,050
# OF PERSONS PER HH	2.6	2.5	2.5
AVERAGE HH INCOME	\$215,076	\$213,561	\$182,969
AVERAGE HOUSE VALUE	\$1,285,689	\$1,085,004	\$927,044

* Demographic data derived from 2020 ACS - US Census