



COMMERCIAL REAL ESTATE

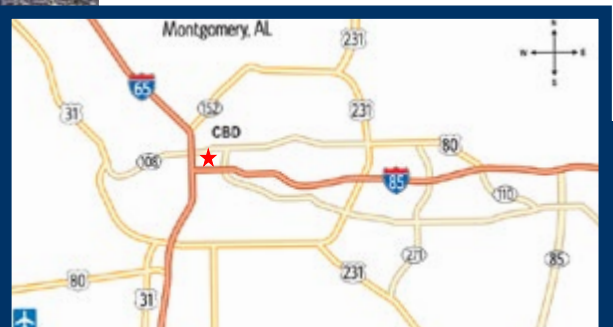
25 South Court Street
Montgomery, AL 36104

FOR SALE



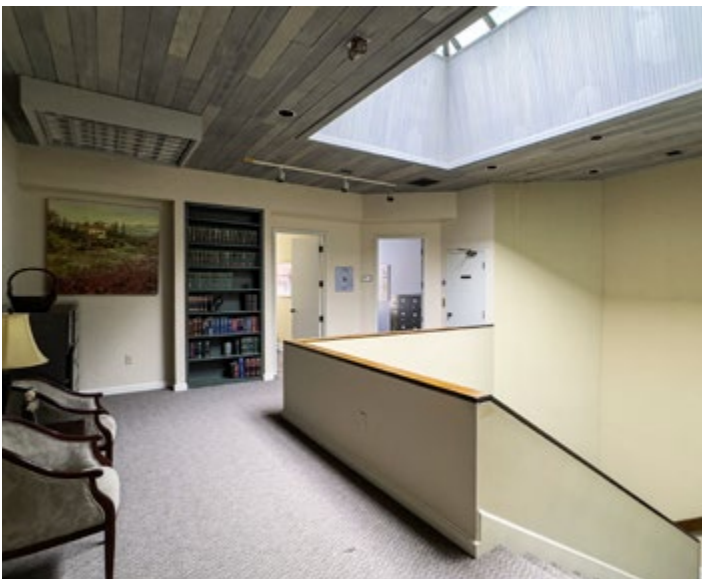
Sale Price	\$ 670,000.00
Building Area	+/- 4,400 S.F.
Land Size	+/- 4,405 S.F.
Zoning	T-5 (Smart Code)
Parking	Available Nearby
Best Use	Office/Residence
Visibility	Excellent
Possession	At Closing
Listing Type	Exclusive

Excellent office and live-work opportunity with skylights throughout the building. Less than one (1) mile from Alabama State Capitol and easy access to I-85/I-65. Contact Mark Dauber for more information at (334) 538-4677.

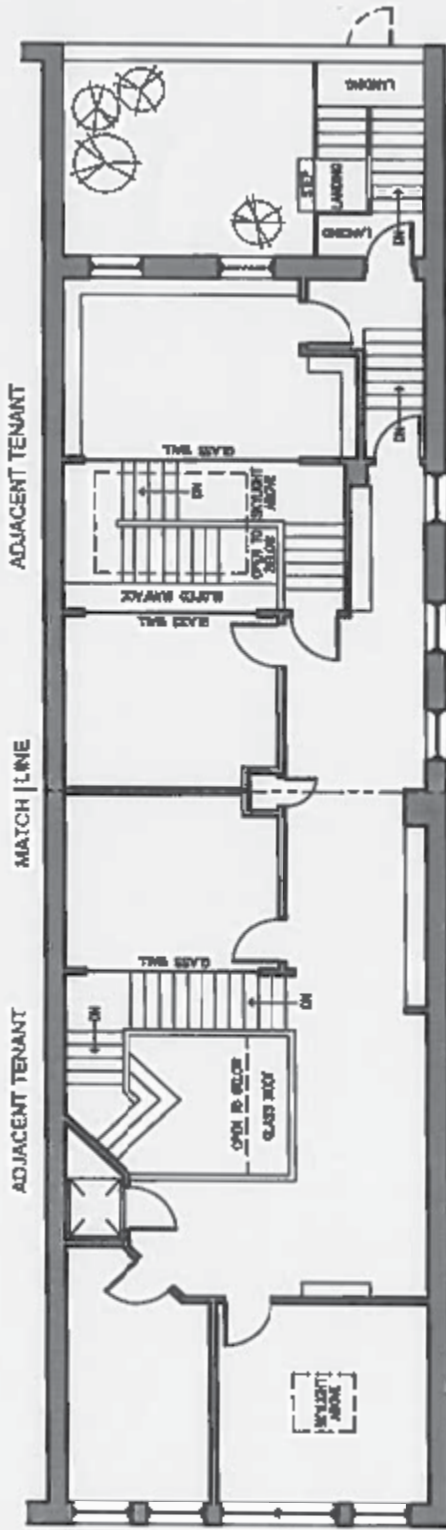


Mark A. Dauber
John Stanley & Associates, Inc.
4747 Woodmere Blvd. ■ Montgomery, AL 36106
Tel: (334) 271-2475 ■ Fax: (334) 271-2421
mdauber@johnstanleyassociates.com
www.johnstanleyassociates.com

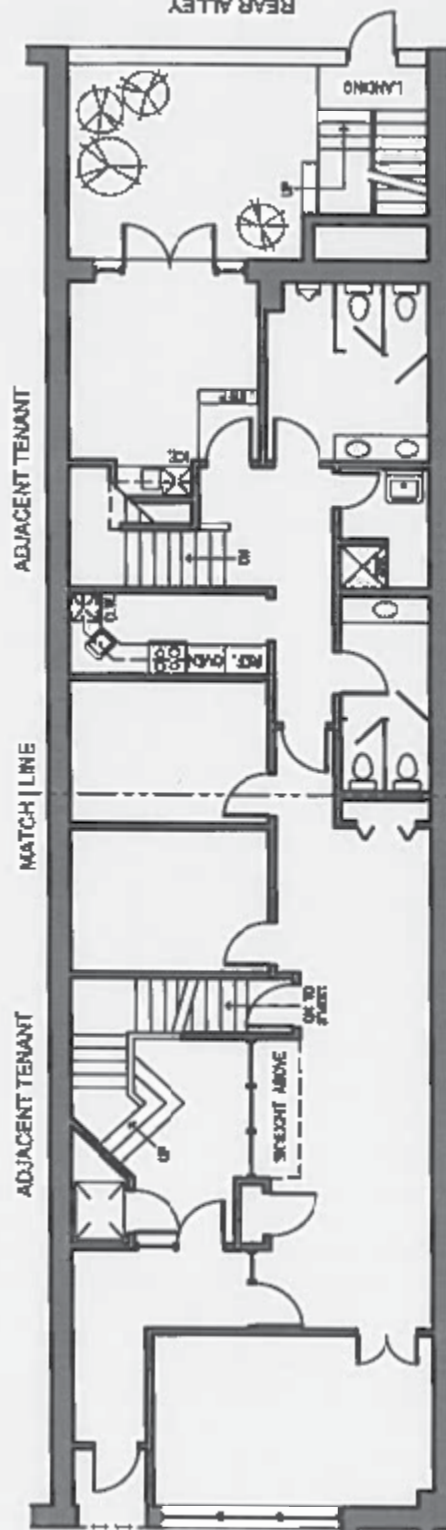




5/8/2025



Second Floor



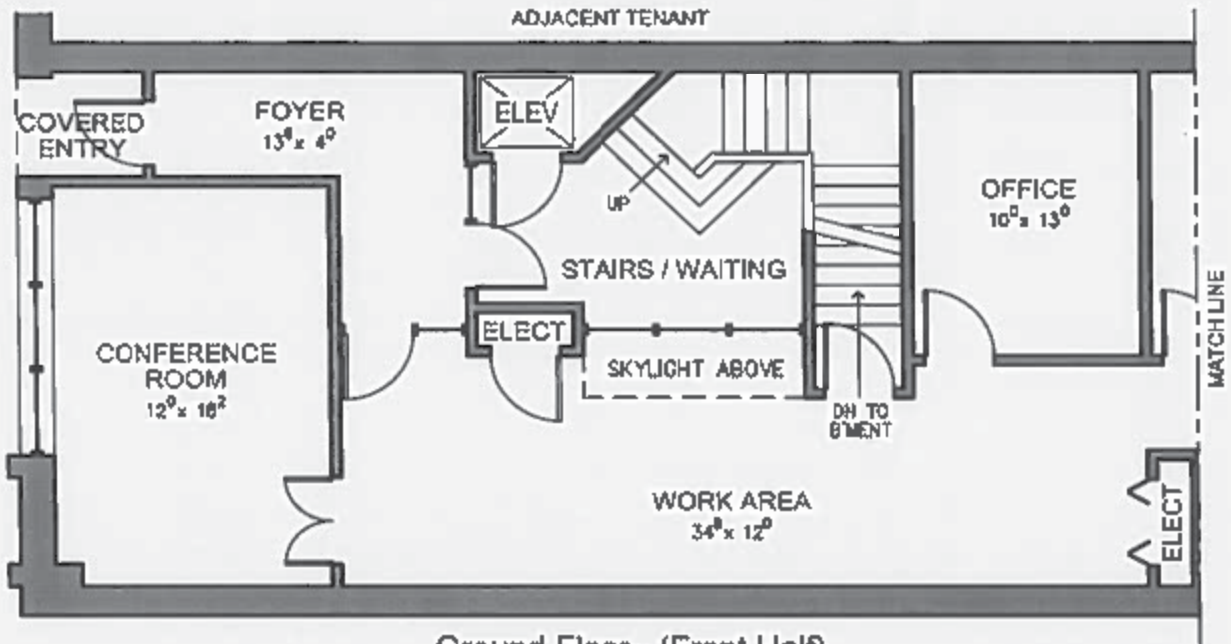
Ground Floor

REFER TO NEXT TWO SHEETS FOR ENLARGEMENTS

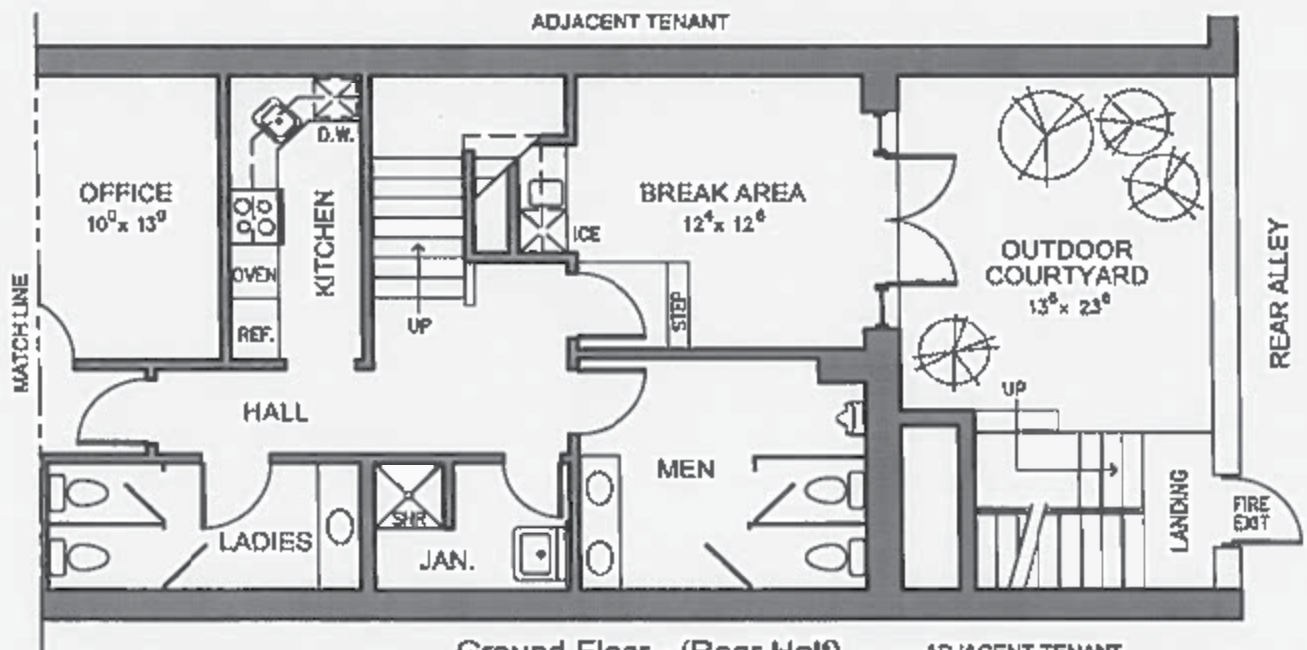
BUILDING DATA:
 Gross Dist. - 2,200 s.f.
 Gross Upst. - 2,200 s.f.
 Covered - 320 s.f.

Property Address:
 25 Court Street
 Montgomery, Alabama

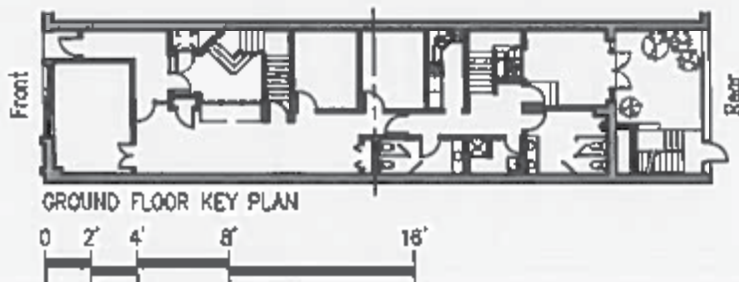




Ground Floor - (Front Half)



Ground Floor - (Rear Half)

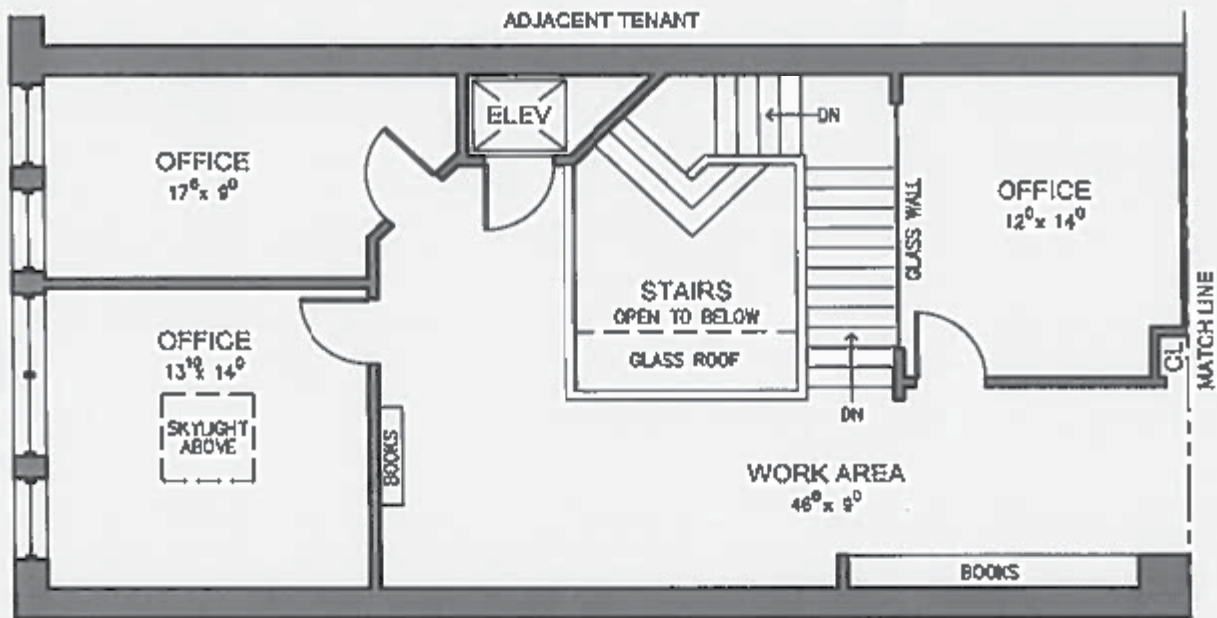


Property Address:
25 Court Street
Montgomery, Alabama

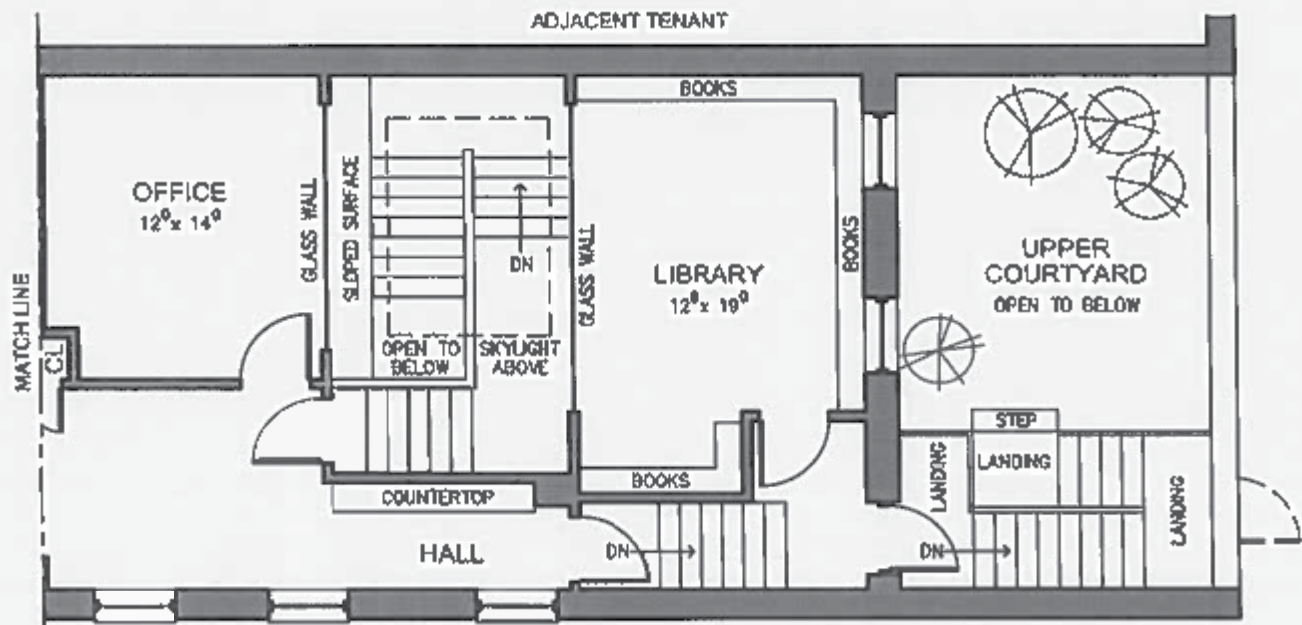
BUILDING DATA:

Gross Dnat. - 2,200 s.f.
Gross Upst. - 2,200 s.f.
Covered - 320 s.f.

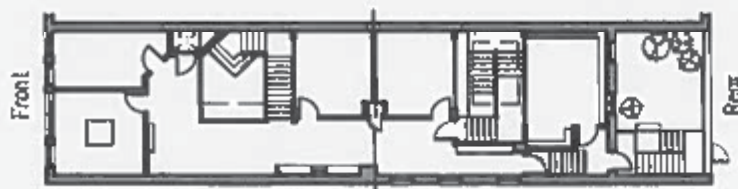
5/8/2025



Second Floor - (Front Half)



Second Floor - (Rear Half)



SECONDND FLOOR KEY PLAN



Property Address:
25 Court Street
Montgomery, Alabama

BUILDING DATA:

Gross Dnst. - 2,200 s.f.
Gross Upst. - 2,200 s.f.
Covered - 320 s.f.