

**2320 AIR PARK ROAD**  
N CHARLESTON, SC 29406



# FOR LEASE

15,200 SF INDUSTRIAL SPACE AVAILABLE

*Lead Contact:*



**JON-MICHAEL BROCK, CCIM**  
Principal  
864-978-3704  
JMBrock@lee-associates.com



**ALEX WHITTEMORE**  
Vice President  
803-917-9560  
AWhittemore@lee-associates.com





# PROPERTY OVERVIEW

## PROPERTY DESCRIPTION:

2320 Air Park Road is an approximately 15,200 SF warehouse facility with a fully secure laydown yard, 18’ eave height, 20’ clear height, 23’ ceiling height, 3-phase power, and ample on-site parking. The property also includes one (1) 10’x10’ loading dock and three (3) overhead doors: two measuring 14.5’x12’ and one measuring 10’x16’.

The property is located in an industrial corridor along I-26, just 0.5 miles north of I-526.

## PROPERTY SPECIFICATIONS

ADDRESS	2320 Air Park Road, North Charleston, SC 29406
LEASE RATE	\$10.50/SF (NNN)
NNN FEES	\$1.53/SF
TOTAL SPACE AVAILABLE	15,200 SF
ACRES	0.88 AC
TMS #	472-00-00-040
ZONING	M-1 Light Industrial
PARKING	Ample On-Site Parking
EAVE HEIGHT	18’
CLEAR HEIGHT	20’
CEILING HEIGHT	23’
OVERHEAD DOORS	Two (2) 14.5’x12’ and One (1) 10’x16’
LOADING DOCKS	One (1) 10’X10’
POWER	3-Phase Power



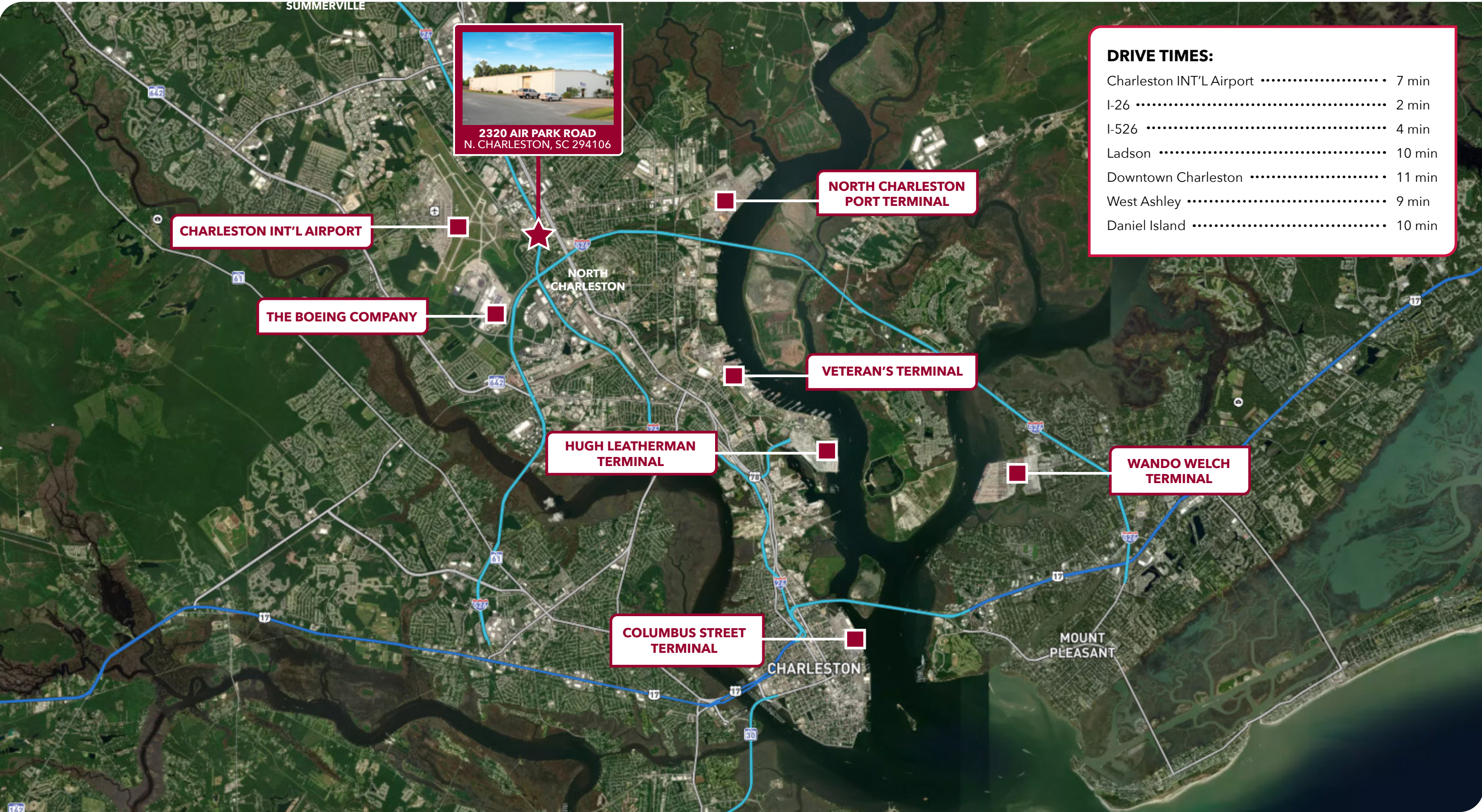


# AERIAL OVERVIEW





# MARKET OVERVIEW





# 2320

## AIR PARK ROAD

**Lead Contact:**



**JON-MICHAEL BROCK, CCIM**  
Principal  
864-978-3704  
JMBrock@lee-associates.com



**ALEX WHITTEMORE**  
Vice President  
803-917-9560  
AWhittemore@lee-associates.com



All information furnished regarding property for sale, rental or financing is from sources deemed reliable, but no warranty or representation is made to the accuracy thereof and same is submitted to errors, omissions, change of price, rental or other conditions prior to sale, lease or financing or withdrawal without notice. No liability of any kind is to be imposed on the broker herein.