

The Dairy Building

2715 SE 8TH AVENUE, PORTLAND, OR 97202

Rod Brokenshire
503.972.7281
rod@macadamforbes.com
Licensed in OR

2 Centerpointe Drive, Suite 500 | Lake Oswego, OR 97035 | WWW.MACADAMFORBES.COM | 503.227.2500

All of the information contained herein was obtained either from the owner or other parties we consider reliable. We have no reason to doubt its accuracy, however we do not guarantee it.

FOR LEASE

 **MACADAM
FORBES**
COMMERCIAL REAL ESTATE SERVICES

FOR LEASE

2715 SE 8th Avenue, Portland, OR 97202



PROPERTY DESCRIPTION

Locally owned by Intrinsic Ventures, The Dairy Building offers unique, creative spaces with modern design in a historic industrial building.

OFFERING SUMMARY

Lease Rate:	\$22.00 - \$27.00 SF/yr NNN
Available SF:	209 - 2,148 SF
Lot Size:	2.5 Acres
Building Size:	46,834 SF



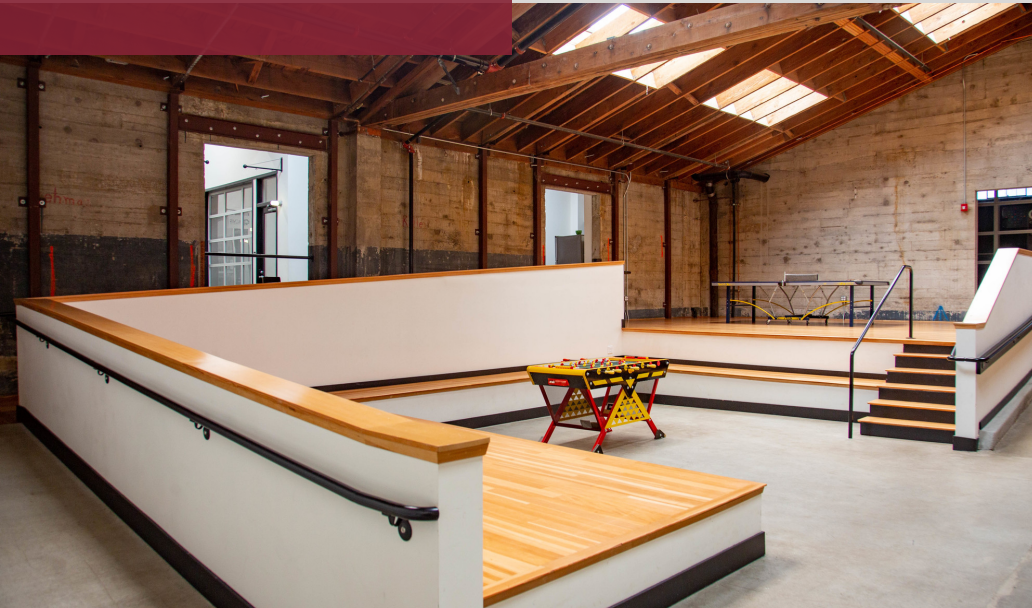
Rod Brokenshire
503.972.7281
rod@macadamforbes.com
Licensed in OR

All of the information contained herein was obtained either from the owner or other parties we consider reliable. We have no reason to doubt its accuracy, however we do not guarantee it.

MACADAMFORBES.COM | 503.227.2500

FOR LEASE

2715 SE 8th Avenue, Portland, OR 97202



PROPERTY HIGHLIGHTS

- Dynamic common areas encourage collaboration
- Shared building kitchen, conference areas, multiple huddle rooms, and phone booths
- 22' ceilings with skylights throughout common areas and tenant spaces
- Kitchenettes in most suites
- Glass roll-up doors and roll-ups create an open work environment
- Polished concrete floors
- Abundant vehicle parking and secure bike storage
- The Dairy Building has undergone full seismic upgrade with new roof and new mechanical systems, including separately metered electrical, LED lighting and fire sprinklers.



Rod Brokenshire
503.972.7281
rod@macadamforbes.com
Licensed in OR

All of the information contained herein was obtained either from the owner or other parties we consider reliable. We have no reason to doubt its accuracy, however we do not guarantee it.

MACADAMFORBES.COM | 503.227.2500

FOR LEASE

2715 SE 8th Avenue, Portland, OR 97202



SPACES

LEASE RATE

SPACE SIZE

Suite 116	\$24.00 SF/yr	1,131 SF
Suite 145	\$22.00 SF/yr	1,887 SF
Suite 165	\$27.00 SF/yr	632 SF
Suite 171	\$22.00 SF/yr	2,148 SF
Basement Studio 2	\$24.00 SF/yr	209 SF
Basement Studio 3	\$24.00 SF/yr	450 SF
Basement Studio 4	\$24.00 SF/yr	330 SF

SPACE NOTES

- First year's lease rate shall be reduced \$3.00 SF, applicable to all suites except Basement Studio 3
- Lease rates for all suites are NNN. The basement studio rates are quoted on a gross basis



Rod Brokenshire

503.972.7281

rod@macadamforbes.com

Licensed in OR

All of the information contained herein was obtained either from the owner or other parties we consider reliable. We have no reason to doubt its accuracy, however we do not guarantee it.

MACADAMFORBES.COM | 503.227.2500

FOR LEASE

2715 SE 8th Avenue, Portland, OR 97202



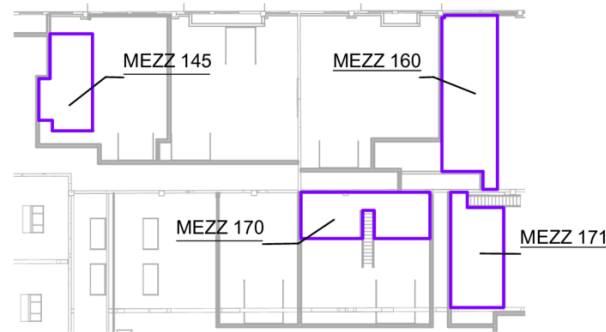
Rod Brokenshire
503.972.7281
rod@macadamforbes.com
Licensed in OR

All of the information contained herein was obtained either from the owner or other parties we consider reliable. We have no reason to doubt its accuracy, however we do not guarantee it.

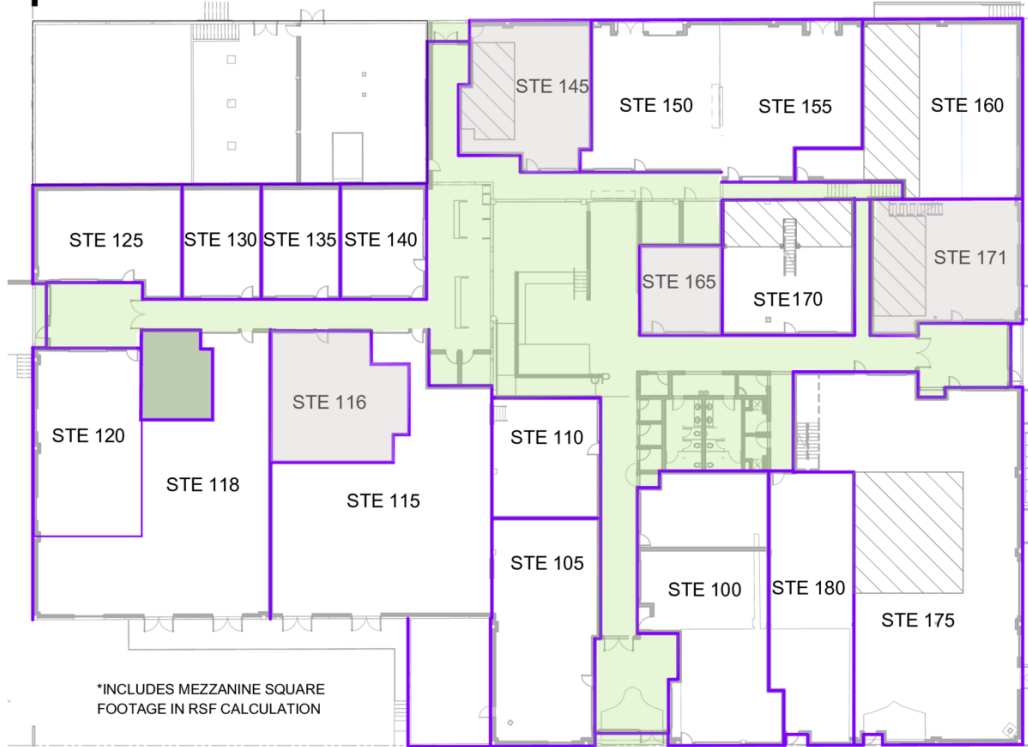
MACADAMFORBES.COM | 503.227.2500

LEGEND

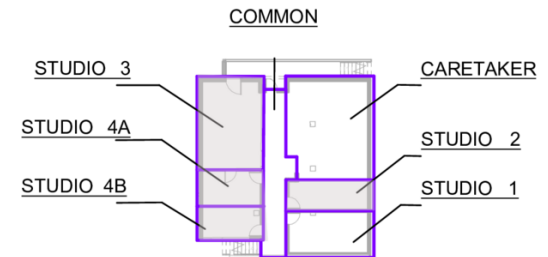
- Available
- Common Area



1 AREA - MEZZ



2 AREA - LEVEL 1



3 AREA - BASEMENT

FOR LEASE

2715 SE 8th Avenue, Portland, OR 97202

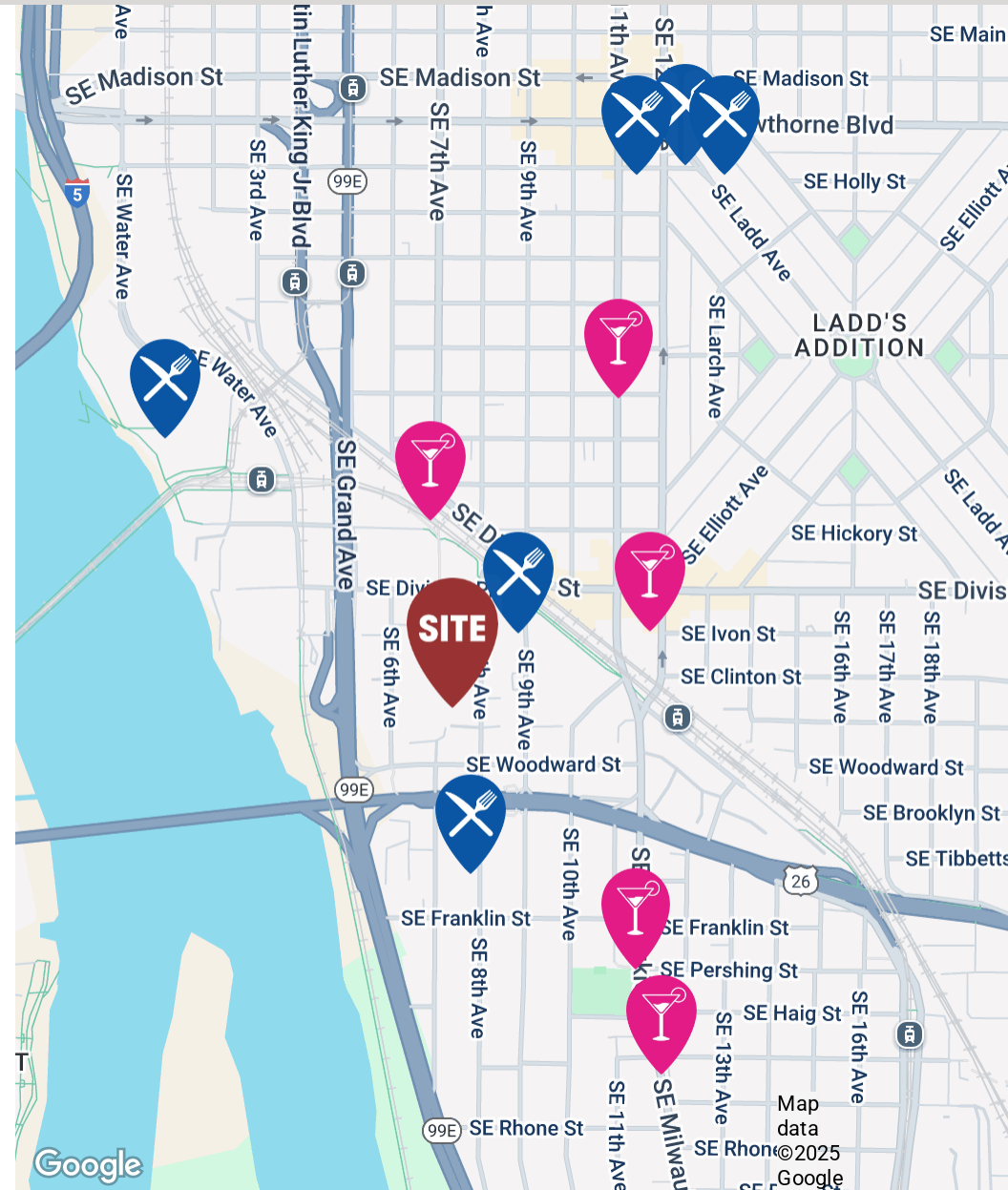


LOCATION OVERVIEW

The Dairy Building is located in SE Portland's Hosford-Abernethy Neighborhood which offers residents an urban-suburban mix feel where most residents own their homes. There are also a number of restaurants, bars, coffee shops, and parks nearby.

Walk score - Very Walkable (89)

Transit score - Good Transit (69)



Rod Brokenshire

503.972.7281

rod@macadamforbes.com

Licensed in OR

All of the information contained herein was obtained either from the owner or other parties we consider reliable. We have no reason to doubt its accuracy, however we do not guarantee it.

MACADAMFORBES.COM | 503.227.2500