

FOR LEASE – Retail or Office Space



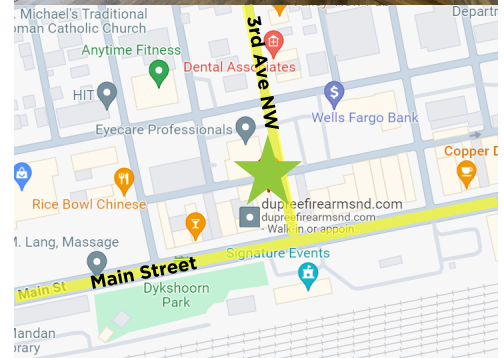
105 3rd Ave NW, Mandan

Property Summary

- Lease Rate: \$12 PSF = \$1,134/mo
- Lease Space: 1,134 SF
- Parking: Street & Store Front

Property Highlights

- 18' x 20' Reception/Lobby Area w/Built-in 2 Level Reception Desk
- (2) 11' x 13' Private Offices
- (1) 11' x 17' Conference Room
- (1) Private Restroom w/Storage Closet
- Built-in Bookshelves, Vault Included
- 2 x 2 Acoustic Ceiling & Fluorescent Lighting
- Plank Laminate Flooring & Carpet Throughout



George Yineman
Broker / President

george@risepropertybrokers.com
c: 701.319.3000

All information herein has been obtained from sources deemed reliable. No warranty or guarantee is made as to the accuracy of the information

POWERED BY CREXi

RISE PROPERTY BROKERS

1010 E Central Avenue
Bismarck, ND 58501

o: 701.222.0232

risepropertybrokers.com

Interior Photos



George Yineman
Broker / President

george@risepropertybrokers.com
c: 701.319.3000

All information herein has been obtained from sources deemed reliable. No warranty or guarantee is made as to the accuracy of the information

POWERED BY CREXi

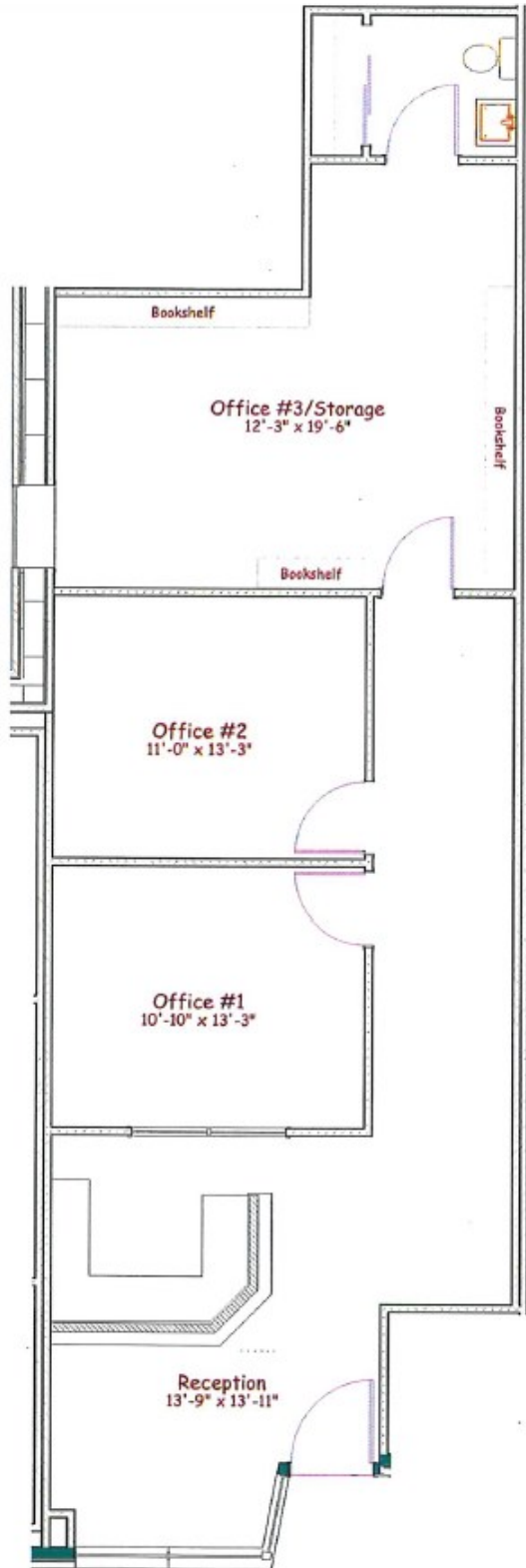
RISE PROPERTY BROKERS

1010 E Central Avenue
Bismarck, ND 58501

o: 701.222.0232

risepropertybrokers.com

Floor Plan



Neighboring Tenants Within Building:

- Just You Studios
- Big Stick Cigars
- Huntington Books

Neighboring Tenants:

- Deluxe Barber Shop
- ND Fire Academy
- Mandan Depot
- Mandan Heritage Plaza
- Sewing Machines Plus
- Wells Fargo Bank



George Yineman
Broker / President

george@risepropertybrokers.com
c: 701.319.3000

RISE PROPERTY BROKERS

1010 E Central Avenue
Bismarck, ND 58501

o: 701.222.0232

risepropertybrokers.com

All information herein has been obtained from sources deemed reliable.
No warranty or guarantee is made as to the accuracy of the information

POWERED BY **CREXi**

Property Location



Location Details:

- High traffic, high visibility
- Easy access to Interstate
- Heart of Downtown Mandan
- Located within the Historic Lewis & Clark Hotel Property



George Yineman
Broker / President

george@risepropertybrokers.com
c: 701.319.3000

RISE PROPERTY BROKERS

1010 E Central Avenue
Bismarck, ND 58501

o: 701.222.0232

risepropertybrokers.com

All information herein has been obtained from sources deemed reliable. No warranty or guarantee is made as to the accuracy of the information

POWERED BY **CREXi**



1010 E Central Ave. Bismarck, ND 58501

Risepropertybrokers.com

701.222.0232 (Office)

We RISE Together!



George Yineman
Broker / President
701.319.3000



Regina Yineman
VP of Operations /
Commercial Agent



Adam Geiger
Associate Broker /
REALTOR®
701.425.9427



Chris Volk
Commercial
REALTOR®
701.880.0522



Fred Koenig
Commercial
REALTOR®
701.226.7206



Nash Koch
Commercial
REALTOR®
701.527.5624

**We deliver on our promise to meet client's
comprehensive commercial real estate needs.**