

## For Lease

138 units A & B of Ryder Park—  
**Available Summer 2026**

First two units available for lease located in the rear building. Each unit has a floorplan size of 800 SF, for a contiguous ground floor space of 1,600 SF. Additionally each unit will have approximately 500 SF of mezzanine space.

M-1 Light Industrial zoning, wide variety of commercial and manufacturing uses.

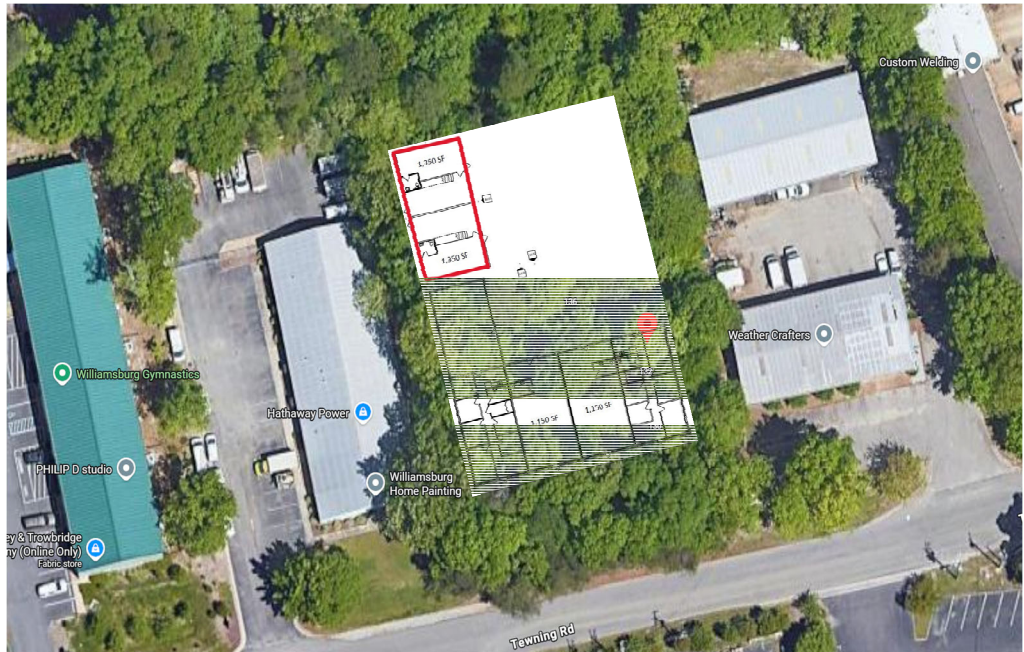
Each unit equipped with storefront door and front loaded roll-up door.

Convenient location close to New Town, Route 199, and downtown Williamsburg.

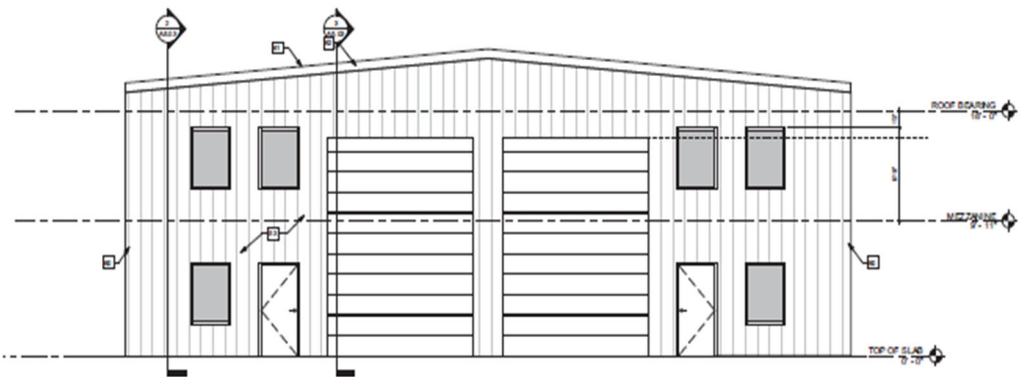
***Lease Rate: \$20 .00 SF,  
tenant pays utilities***

## Ryder Business Park

138 A & B Tewning Road, Williamsburg



1 DETACHED WAREHOUSE SOUTH ELEVATION  
138' x 110'



2 DETACHED WAREHOUSE EAST ELEVATION  
138' x 110'

Contact:

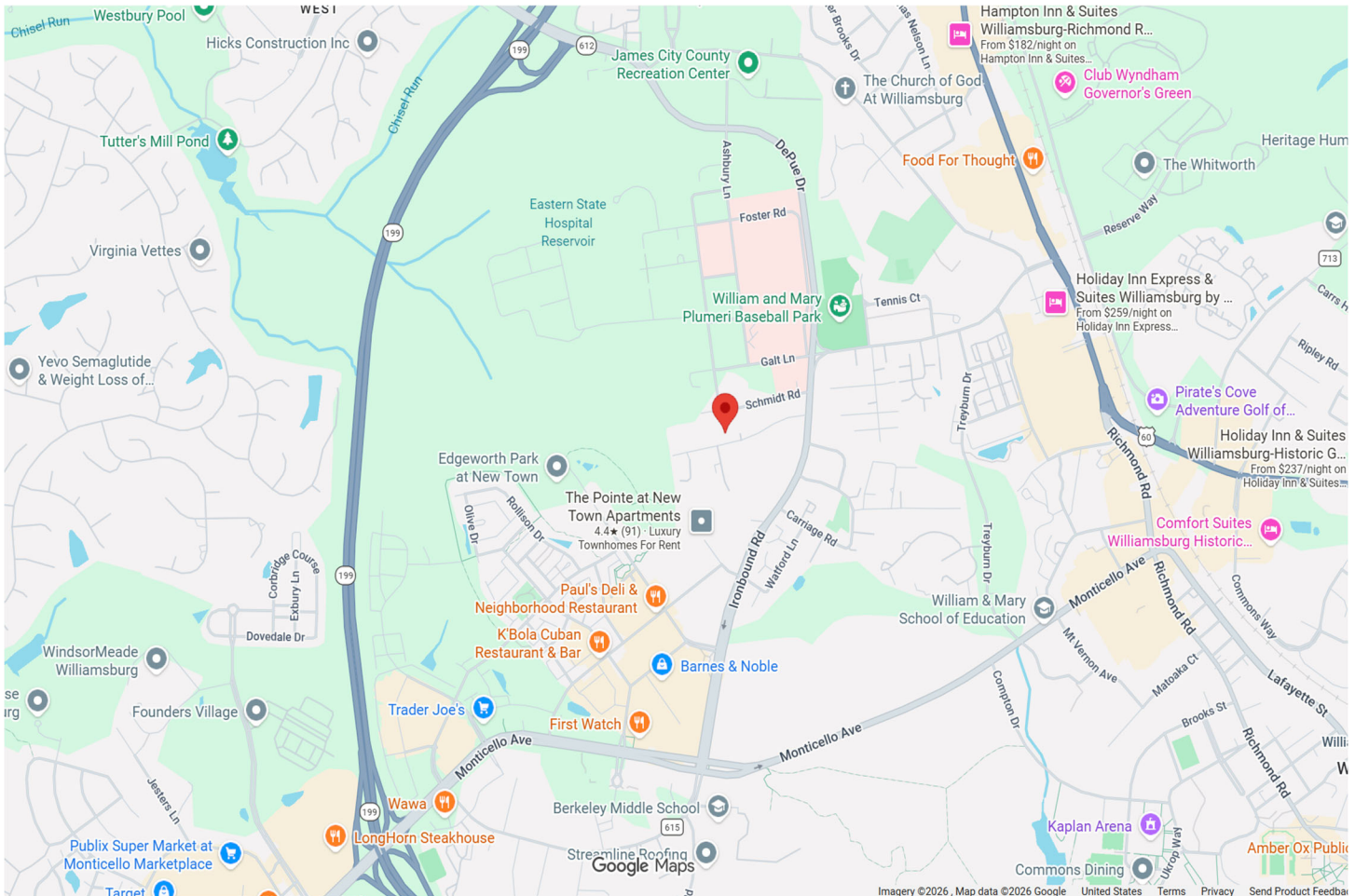
Mac Houtz

757.873.1401

[www.druckerandfalk.com](http://www.druckerandfalk.com)

**DF**  
**DF COMMERCIAL**  
BY DRUCKER+FALK

# 138 A & B Tewning Road Williamsburg, VA



Contact:

**Mac Houtz**

757.873.1401

mhoutz@druckerandfalk.com

[www.druckerandfalk.com](http://www.druckerandfalk.com)