

# PROPERTY FEATURES



## LOT SIZE

±5.63 Ac.  
(±245,243 sq.ft.)



## PARCELS

APN'S: 519-240-005, 519-240-004, & 519-240-002



## ZONING

Mixed Use (MU) per the County of Riverside, CA

# FOR LEASE

## 249 APACHE TRL., CABAZON, CA 92230



## PROPERTY HIGHLIGHTS

- Multiple Points of Ingress/Egress
- Fenced & Secured
- Flat Topography
- 1 to 5.63 Acres Available (divisible)
- Existing Utilities on Site (verify)
- Ideal Storage Yard (verify)
- Excellent Proximity to Cabazon Outlet Mall & Morongo Casino
- Less Than a Mile From I-10 Freeway On/Off Ramp



**INLAND  
EMPIRE**

CAL DRE # 02120868

KW COMMERCIAL  
3595-1 Inland Empire  
Blvd. Suite 1250  
Ontario, CA 91764  
909.980.6868

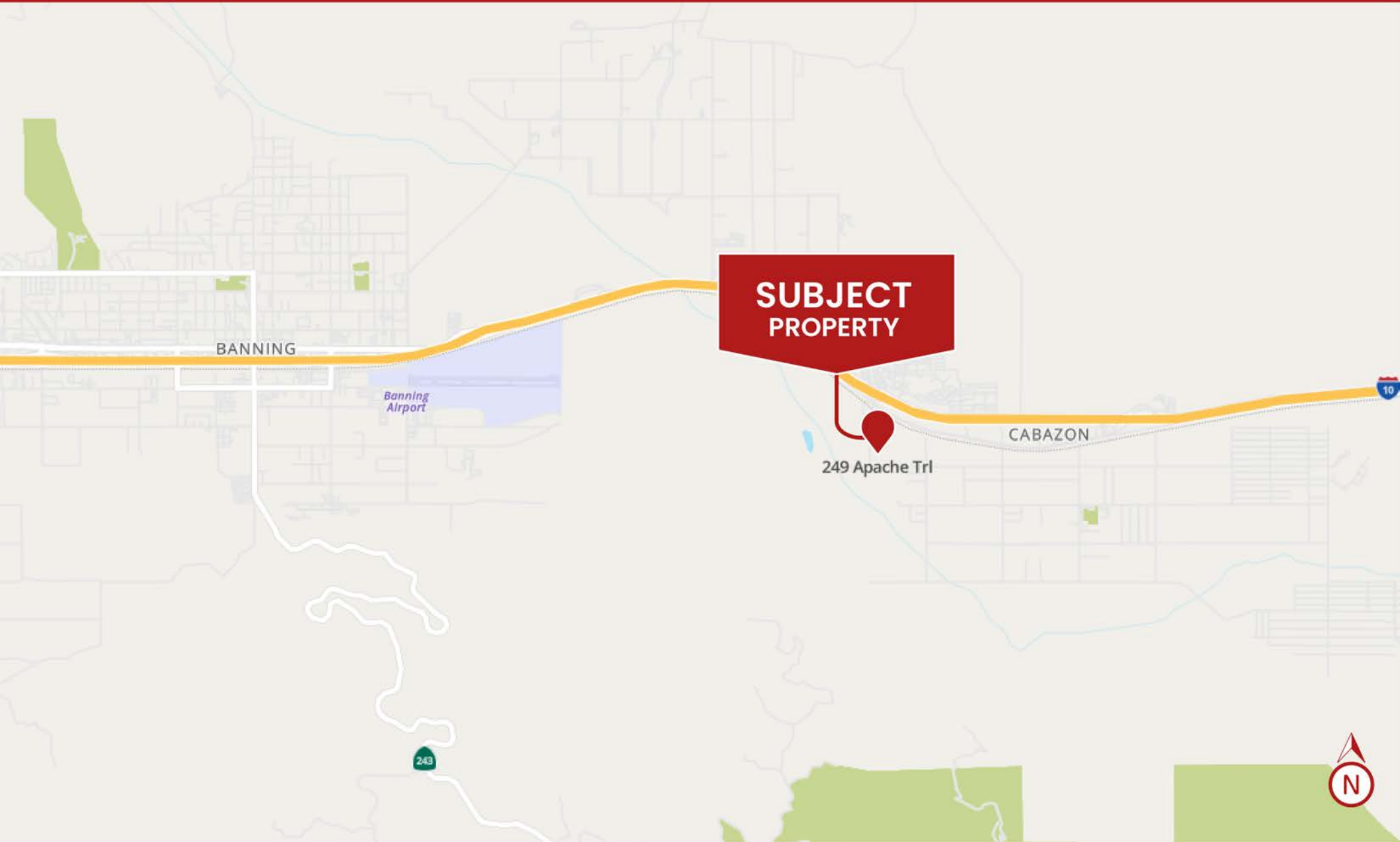
Rene Ramos, Jr.  
909.980.6868  
Rene.Ramos@kwcommercial.com  
CalDRE Lic. #01836872

Jacob B. Bernardy  
909.935.0935  
Jacob.Bernardy@kwcommercial.com  
CalDRE Lic. #02039512

Robert D. Bagley III  
909.935.0938  
Robert.Bagley@kwcommercial.com  
CalDRE Lic. #02131874

Daniel W. Richards  
909.243.7747 x 222  
Daniel.Richards@kwcommercial.com  
CalDRE Lic. #00803221

WE OBTAINED THE INFORMATION ABOVE FROM SOURCES WE BELIEVE TO BE RELIABLE. HOWEVER, WE HAVE NOT VERIFIED ITS ACCURACY AND MAKE NO GUARANTEE, WARRANTY, OR REPRESENTATION ABOUT IT. IT IS SUBMITTED SUBJECT TO THE POSSIBILITY OF ERRORS, OMISSIONS, CHANGE OF PRICE, RENTAL OR OTHER CONDITIONS, PRIOR SALE, LEASE OR FINANCING, OR WITHDRAWAL WITHOUT NOTICE. WE INCLUDE PROJECTIONS, OPINIONS, ASSUMPTIONS OR ESTIMATES FOR EXAMPLE ONLY, AND THEY MAY NOT REPRESENT CURRENT OR FUTURE PERFORMANCE OF THE PROPERTY. YOU AND YOUR TAX AND LEGAL ADVISORS SHOULD CONDUCT YOUR OWN INVESTIGATION OF THE PROPERTY AND TRANSACTION.



Rene Ramos, Jr.  
909.980.6868  
Rene.Ramos@kwcommercial.com  
CalDRE Lic. #01836872

Jacob B. Bernardy  
909.935.0935  
Jacob.Bernardy@kwcommercial.com  
CalDRE Lic. #02039512

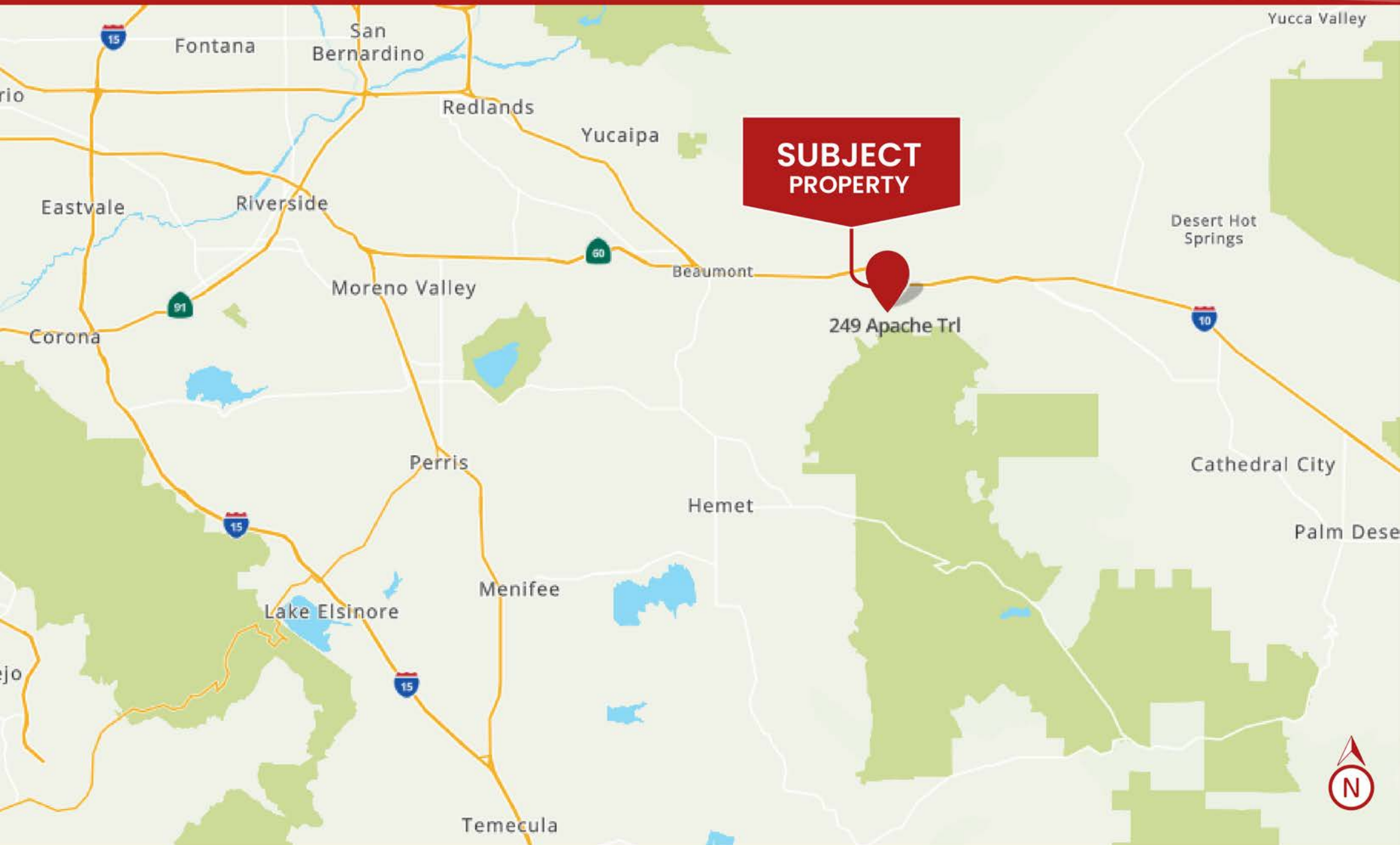
Robert D. Bagley III  
909.935.0938  
Robert.Bagley@kwcommercial.com  
CalDRE Lic. #02131874

Daniel W. Richards  
909.243.7747 x 222  
Daniel.Richards@kwcommercial.com  
CalDRE Lic. #00803221



INLAND  
EMPIRE

CAL DRE # 02120868



Rene Ramos, Jr.  
909.980.6868  
Rene.Ramos@kwcommercial.com  
CalDRE Lic. #01836872

Jacob B. Bernardy  
909.935.0935  
Jacob.Bernardy@kwcommercial.com  
CalDRE Lic. #02039512

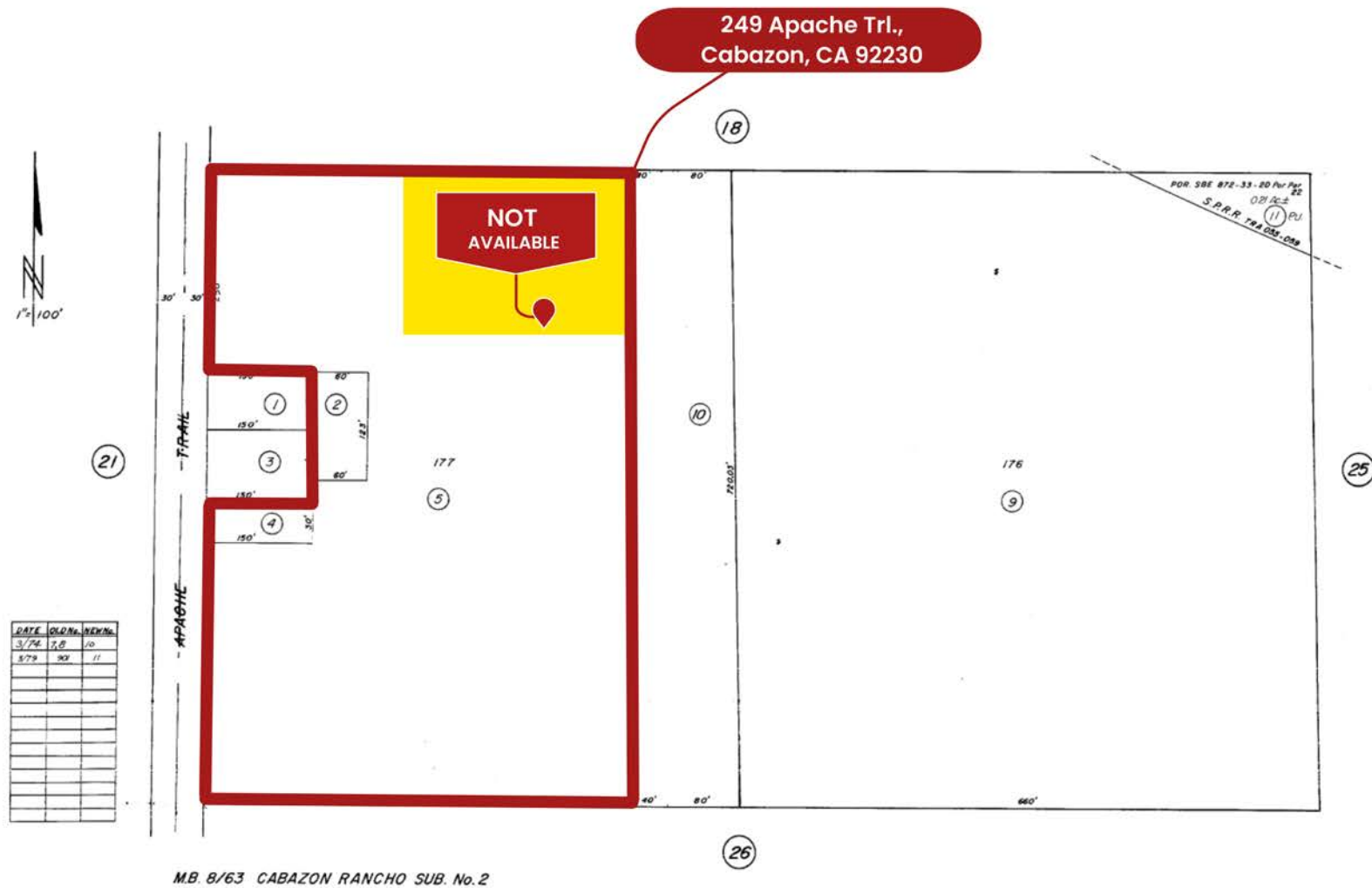
Robert D. Bagley III  
909.935.0938  
Robert.Bagley@kwcommercial.com  
CalDRE Lic. #02131874

Daniel W. Richards  
909.243.7747 x 222  
Daniel.Richards@kwcommercial.com  
CalDRE Lic. #00803221



INLAND EMPIRE

CAL DRE # 02120868



Rene Ramos, Jr.  
909.980.6868  
Rene.Ramos@kwcommercial.com  
CalDRE Lic. #01836872

Jacob B. Bernardy  
909.935.0935  
Jacob.Bernardy@kwcommercial.com  
CalDRE Lic. #02039512

Robert D. Bagley III  
909.935.0938  
Robert.Bagley@kwcommercial.com  
CalDRE Lic. #02131874

Daniel W. Richards  
909.243.7747 x 222  
Daniel.Richards@kwcommercial.com  
CalDRE Lic. #00803221



INLAND  
EMPIRE

CAL DRE # 02120868



Rene Ramos, Jr.  
909.980.6868  
Rene.Ramos@kwcommercial.com  
CalDRE Lic. #01836872

Jacob B. Bernardy  
909.935.0935  
Jacob.Bernardy@kwcommercial.com  
CalDRE Lic. #02039512

Robert D. Bagley III  
909.935.0938  
Robert.Bagley@kwcommercial.com  
CalDRE Lic. #02131874

Daniel W. Richards  
909.243.7747 x 222  
Daniel.Richards@kwcommercial.com  
CalDRE Lic. #00803221



INLAND  
EMPIRE

CAL DRE # 02120868



Rene Ramos, Jr.  
909.980.6868  
Rene.Ramos@kwcommercial.com  
CalDRE Lic. #01836872

Jacob B. Bernardy  
909.935.0935  
Jacob.Bernardy@kwcommercial.com  
CalDRE Lic. #02039512

Robert D. Bagley III  
909.935.0938  
Robert.Bagley@kwcommercial.com  
CalDRE Lic. #02131874

Daniel W. Richards  
909.243.7747 x 222  
Daniel.Richards@kwcommercial.com  
CalDRE Lic. #00803221



**INLAND  
EMPIRE**

**CAL DRE # 02120868**