

**FOR LEASE**  
**FORMER ASHLEY'S FURNITURE BUILDING**

**1810**

**S. BROADWAY**

**LOS ANGELES, CA, 90015**



**CBRE**



## PROPERTY HIGHLIGHTS



Asking Rental Rate  
\$1.65 MOD



Building signage and naming  
rights available



49,374 SF Freestanding Lease  
Opportunity



Easy Access to Washington  
Blvd., 110, 10, 101 and I-5  
freeways



2-Story retail / office building  
Loading and Storage Room with  
Freight Elevator



Open layout



Slab to Slab heights 14 ft  
Drop Ceiling Heights 12.9 ft

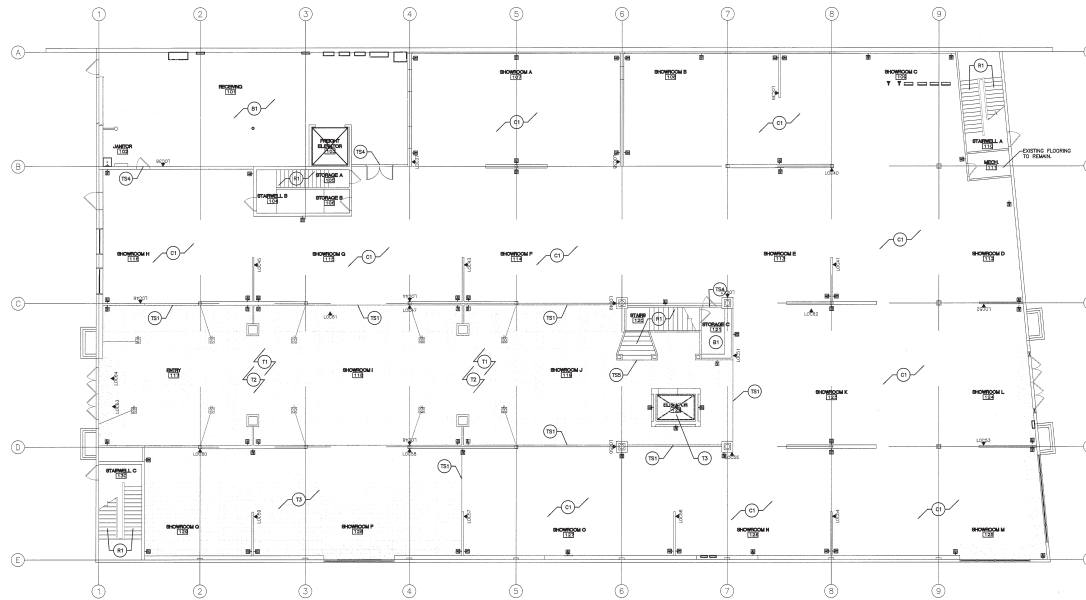


76 secure parking  
stalls

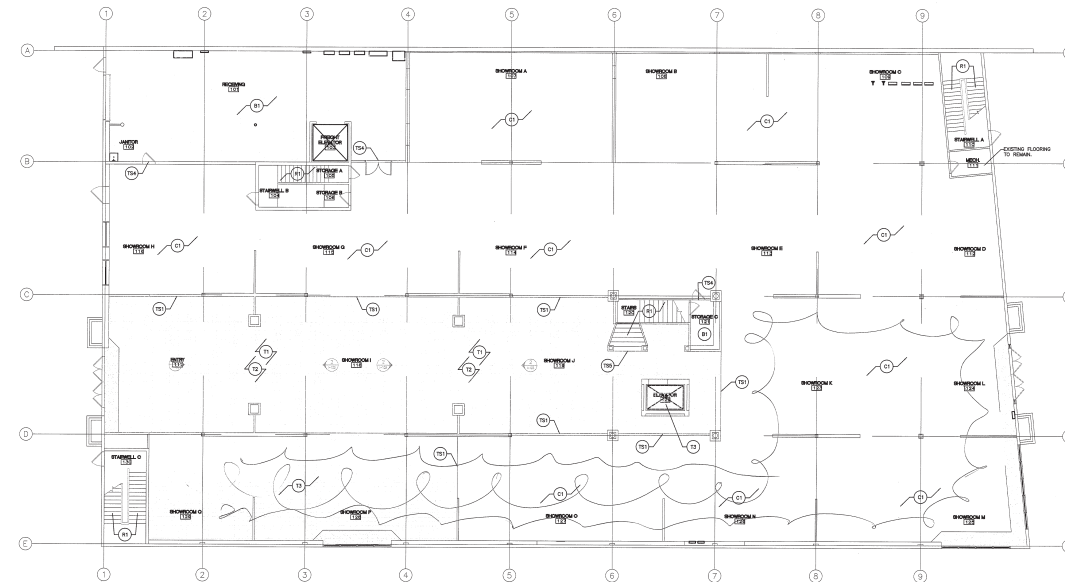


## FLOOR PLANS

**FIRST FLOOR  
APPROX. 24,687 SF**



**SECOND FLOOR  
APPROX. 24,687 SF**



**TOTAL RENTABLE SIZE  
APPROX. 49,374 SF**





# AERIAL MAP

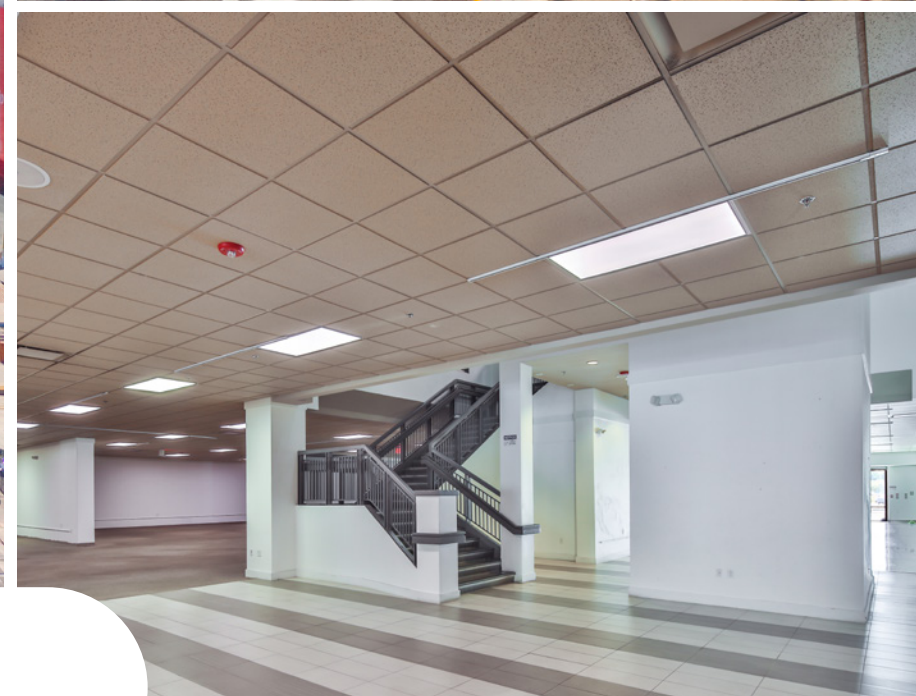
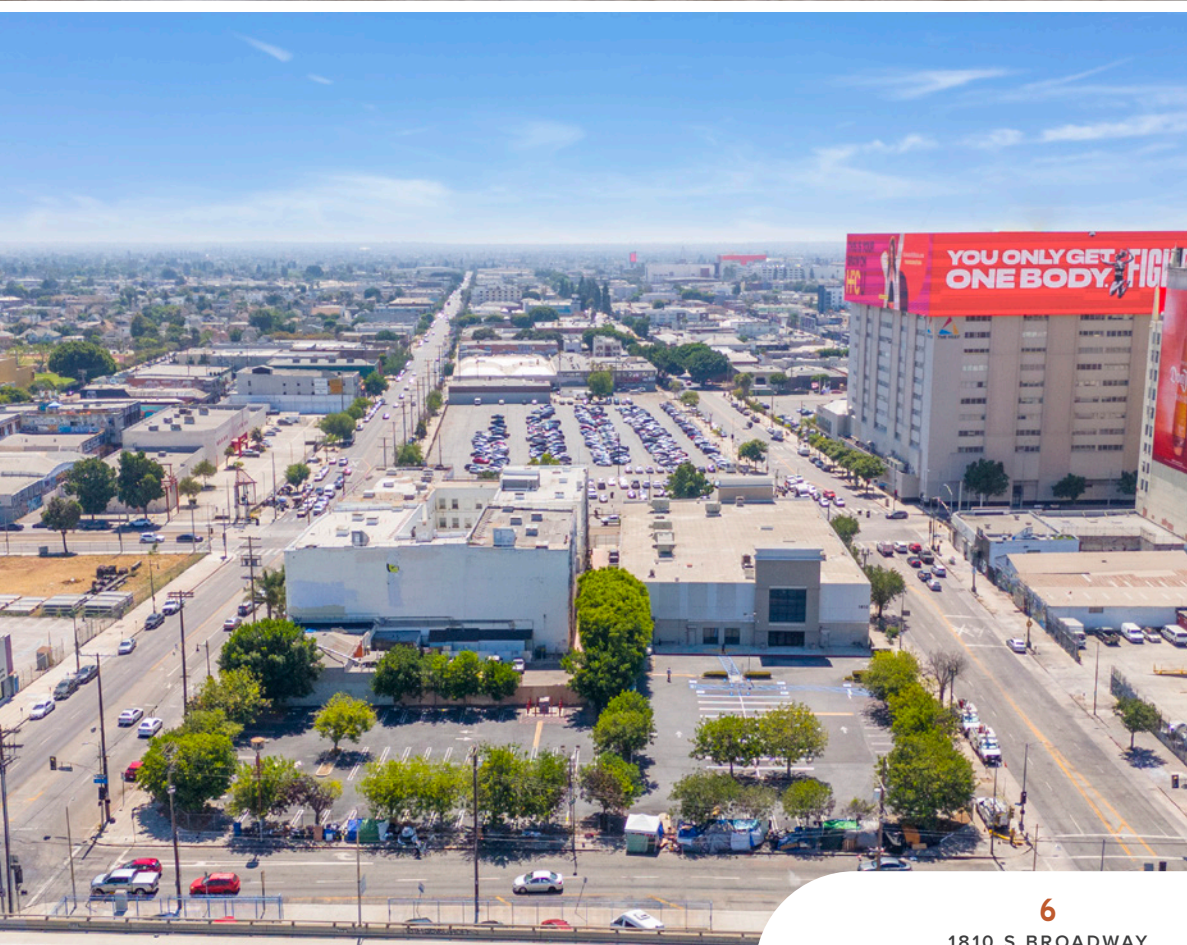




# AERIAL MAP











**1810 S. BROADWAY**  
LOS ANGELES, CA, 90015

## LEASING CONTACTS

### **PHILLIP SAMPLE**

Senior Vice President  
+1 213 613 3301  
phillip.sample@cbre.com  
Lic. 01145593

### **CHRIS CARAS**

Senior Vice President  
+1 213 613 3303  
chris.caras@cbre.com  
Lic. 01229700

### **PHIL HAUSPURG**

Associate  
+1 310 550 2510  
phil.hauspurg@cbre.com  
Lic. 02012230

### **Derrick Moore**

Senior Vice President  
1 213 613 3334  
derrick.moore@cbre.com  
Lic. 01029938

© 2025 CBRE, Inc. All rights reserved. This information has been obtained from sources believed reliable but has not been verified for accuracy or completeness. You should conduct a careful, independent investigation of the property and verify all information. Any reliance on this information is solely at your own risk. CBRE and the CBRE logo are service marks of CBRE, Inc. All other marks displayed on this document are the property of their respective owners, and the use of such logos does not imply any affiliation with or endorsement of CBRE. Photos herein are the property of their respective owners. Use of these images without the express written consent of the owner is prohibited. CPM 1810 S Broadway\_BRO\_v02\_WD 02/04/25

**CBRE**