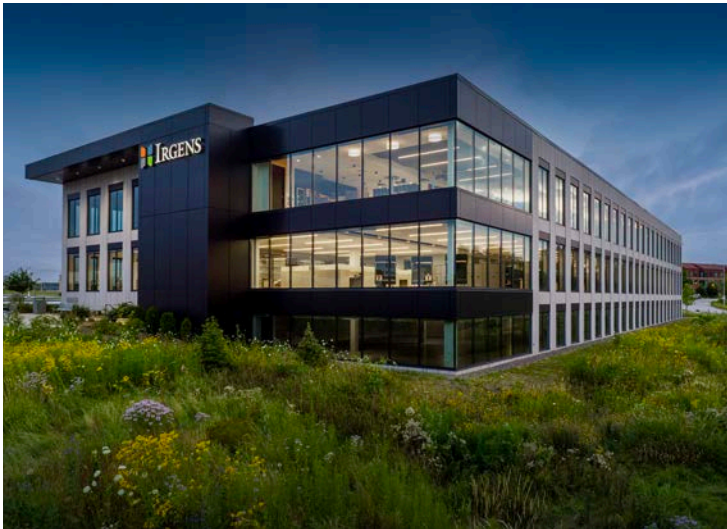


# INNOVATION ONE



## INNOVATION ONE

1401 DISCOVERY PARKWAY | WAUWATOSA, WISCONSIN



 **IRGENS**<sup>®</sup>

866.443.0701 | [irgens.com](http://irgens.com)

**INNOVATION ONE** is a Class A, 70,784 RSF commercial office building prominently located at Innovation Campus in Wauwatosa. At the forefront of sustainable design and development, Innovation One is LEED-Silver Certified and achieved SITES certification in 2024, the first SITES certified project in Wisconsin. Offering desirable amenities and ample parking, Innovation One is ideal for occupants seeking modern and efficient space in a serene setting that prioritizes sustainable building and land development.

## LOCATION HIGHLIGHTS

### SURROUNDINGS

Innovation Campus is uniquely located on one of the few remaining development sites in the geographic epicenter of Milwaukee County. The Milwaukee Regional Medical Center and Milwaukee County Research Park are in the immediate vicinity and abundant retail, hospitality, dining, recreation and other amenities are located nearby.

### ACCESS

Innovation One is approximately a half mile from the Watertown Plank Road/Interstate 41 on-ramp offering convenient access to the regional freeway system including Interstates 94 and 43.

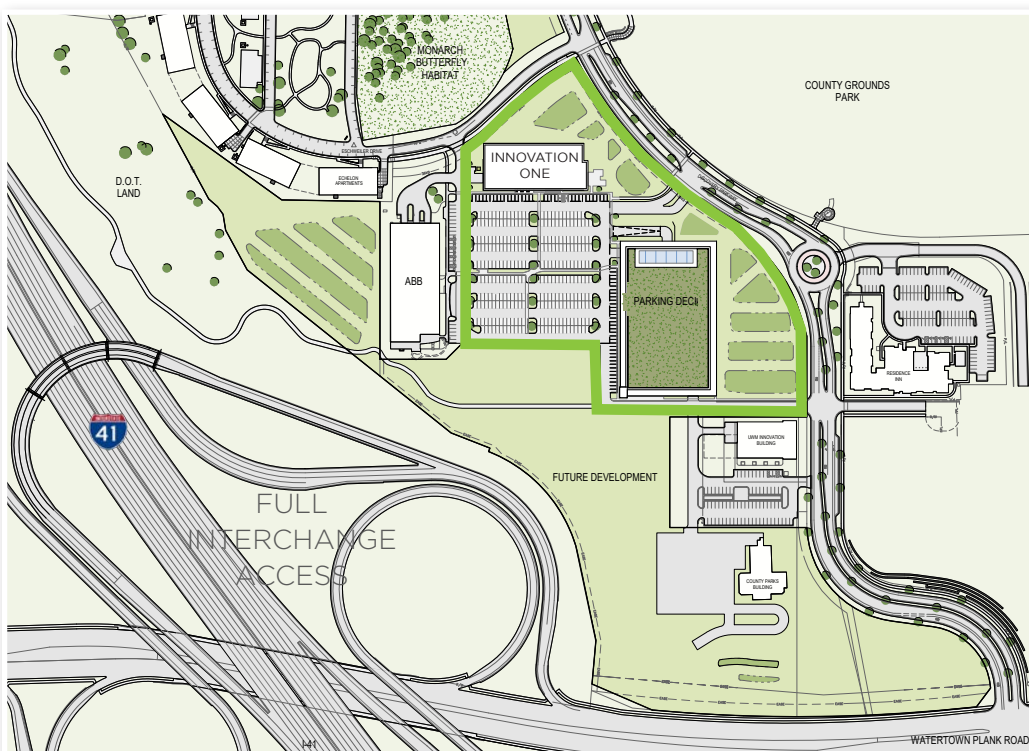
### DRIVABLE AMENITIES

- › 20 minutes to General Mitchell International Airport
- › 15 minutes to downtown Milwaukee
- › 5 minutes to Mayfair Mall

## BUILDING HIGHLIGHTS

- › Two-stories plus garden level
- › Private, underground executive parking in addition to generous, exterior surface and covered parking. The project's adjacent parking structure features rooftop solar panels and is recognized as the largest green roof in the state.
- › Functional and efficient floor plans
- › Monumental staircase in contemporary lobby
- › Thoughtful design to promote a healthy and productive work environment
- › High-end interior finishes
- › Floor-to-ceiling glass for natural daylighting
- › Prominent on-building and monument signage
- › Common area amenities including tenant lounge, fitness center and outdoor patio
- › LEED-Silver certified
- › First SITES-certified development in Wisconsin
- › Professional, proactive property management

# INNOVATION ONE | HIGHLIGHTS



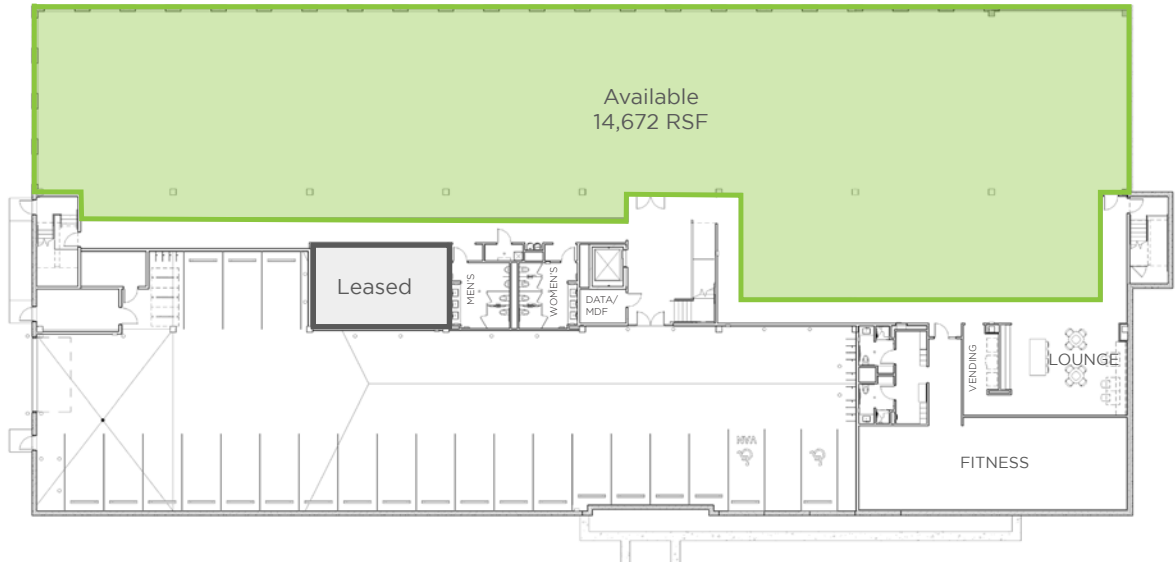
**25** acres  
of land adjacent to  
Interstate 41

Innovation Campus was designed to leverage some of the region's best assets to create a world-class destination that fosters innovation and spurs creativity.

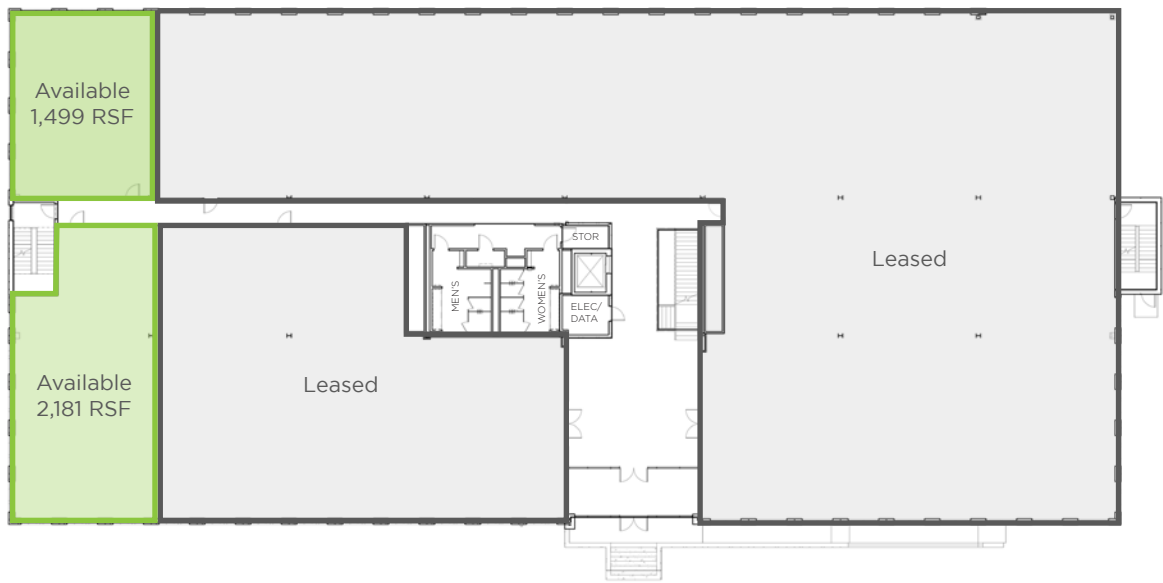


# INNOVATION ONE | AVAILABLE SPACE

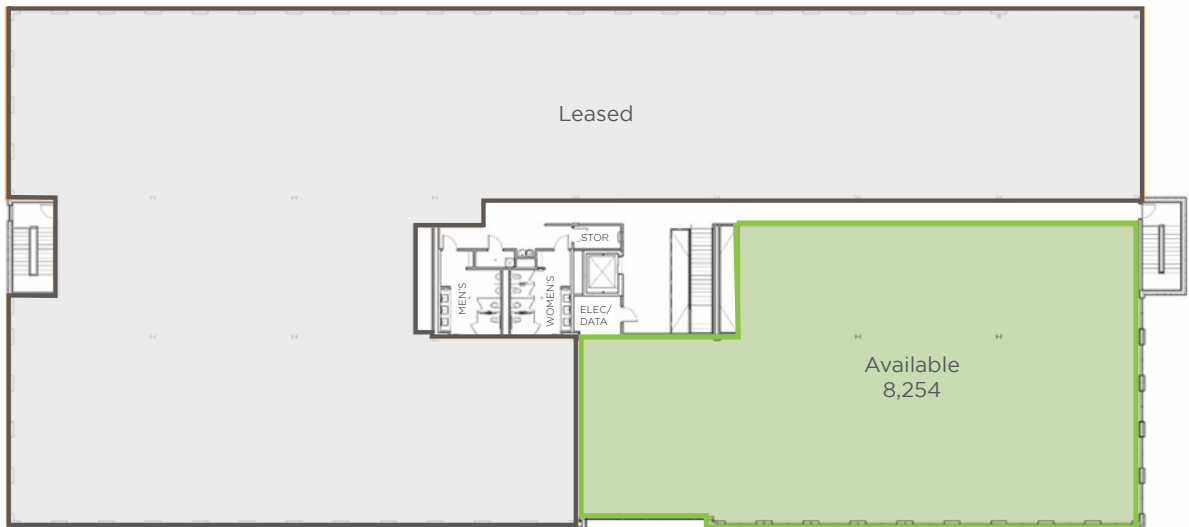
Garden Level



First Floor



Second Floor





CONVENIENTLY  
located at the epicenter  
of metro MKE

Recently enhanced interchange adjacent to the site provides quick and easy access to the busiest freeway interchange in Wisconsin. From here you are just minutes from downtown MKE, the airport and less than 90 miles from Madison and Chicago.



Pristine beauty that  
will be PRESERVED &  
ENHANCED

Environmental responsibility and good business practices go hand in hand. This development will protect and enhance the existing green spaces in the area and create shared spaces that will benefit building occupants and the greater community.



CONNECTED to the  
region's top innovators  
& major employers

Milwaukee Regional Medical Center, the Milwaukee County Research Park, corporate HQs and more. This high-tech, high-profile location is an ideal place to locate and grow your business.

## INNOVATION ONE | CONTACT



ALYSSA GEISLER  
ageisler@irgens.com  
414.443.2580

TOM IRGENS  
tirgens@irgens.com  
414.443.2531



1401 Discovery Parkway, Suite 100 | Milwaukee, WI 53226 | *tele* 414.443.0700 | *fax* 414.443.1400 | [irgens.com](http://irgens.com)



**DISCLOSURE TO NON-RESIDENTIAL CUSTOMERS**

1 Prior to negotiating on your behalf the brokerage firm, or an agent associated with the firm, must provide you the  
2 following disclosure statement:

3 **DISCLOSURE TO CUSTOMERS** You are a customer of the brokerage firm (hereinafter Firm). The Firm is either an agent  
4 of another party in the transaction or a subagent of another firm that is the agent of another party in the transaction. A  
5 broker or a salesperson acting on behalf of the Firm may provide brokerage services to you. Whenever the Firm is  
6 providing brokerage services to you, the Firm and its brokers and salespersons (hereinafter Agents) owe you, the  
7 customer, the following duties:

- 8 (a) The duty to provide brokerage services to you fairly and honestly.
- 9 (b) The duty to exercise reasonable skill and care in providing brokerage services to you.
- 10 (c) The duty to provide you with accurate information about market conditions within a reasonable time if you request  
11 it, unless disclosure of the information is prohibited by law.
- 12 (d) The duty to disclose to you in writing certain Material Adverse Facts about a property, unless disclosure of the  
13 information is prohibited by law (see lines 42-51).
- 14 (e) The duty to protect your confidentiality. Unless the law requires it, the Firm and its Agents will not disclose your  
15 confidential information or the confidential information of other parties (see lines 23-41).
- 16 (f) The duty to safeguard trust funds and other property held by the Firm or its Agents.
- 17 (g) The duty, when negotiating, to present contract proposals in an objective and unbiased manner and disclose the  
18 advantages and disadvantages of the proposals.

19 Please review this information carefully. An Agent of the Firm can answer your questions about brokerage services,  
20 but if you need legal advice, tax advice, or a professional home inspection, contact an attorney, tax advisor, or home  
21 inspector. This disclosure is required by section 452.135 of the Wisconsin statutes and is for information only. It is a  
22 plain-language summary of the duties owed to a customer under section 452.133(1) of the Wisconsin statutes.

23 **CONFIDENTIALITY NOTICE TO CUSTOMERS** The Firm and its Agents will keep confidential any information given to the  
24 Firm or its Agents in confidence, or any information obtained by the Firm and its Agents that a reasonable person  
25 would want to be kept confidential, unless the information must be disclosed by law or you authorize the Firm to  
26 disclose particular information. The Firm and its Agents shall continue to keep the information confidential after the  
27 Firm is no longer providing brokerage services to you.

- 28 The following information is required to be disclosed by law:
- 29 1. Material Adverse Facts, as defined in Wis. Stat. § 452.01(5g) (see lines 42-51).
  - 30 2. Any facts known by the Firm or its Agents that contradict any information included in a written inspection  
31 report on the property or real estate that is the subject of the transaction.

32 To ensure that the Firm and its Agents are aware of what specific information you consider confidential, you may  
33 list that information below (see lines 35-41) or provide that information to the Firm or its Agents by other means. At a  
34 later time, you may also provide the Firm or its Agents with other Information you consider to be confidential.

35 **CONFIDENTIAL INFORMATION:** \_\_\_\_\_  
36 \_\_\_\_\_  
37 \_\_\_\_\_

38 **NON-CONFIDENTIAL INFORMATION** (the following information may be disclosed by the Firm and its Agents): \_\_\_\_\_  
39 \_\_\_\_\_  
40 \_\_\_\_\_  
41 \_\_\_\_\_ (Insert information you authorize to be disclosed, such as financial qualification information.)

42 **DEFINITION OF MATERIAL ADVERSE FACTS**  
43 A "Material Adverse Fact" is defined in Wis. Stat. § 452.01(5g) as an Adverse Fact that a party indicates is of such  
44 significance, or that is generally recognized by a competent licensee as being of such significance to a reasonable  
45 party, that it affects or would affect the party's decision to enter into a contract or agreement concerning a transaction  
46 or affects or would affect the party's decision about the terms of such a contract or agreement.

47 An "Adverse Fact" is defined in Wis. Stat. § 452.01(1e) as a condition or occurrence that a competent licensee  
48 generally recognizes will significantly and adversely affect the value of the property, significantly reduce the structural  
49 integrity of improvements to real estate, or present a significant health risk to occupants of the property; or information  
50 that indicates that a party to a transaction is not able to or does not intend to meet his or her obligations under a  
51 contract or agreement made concerning the transaction.

52 **NOTICE ABOUT SEX OFFENDER REGISTRY** You may obtain information about the sex offender registry and persons  
53 registered with the registry by contacting the Wisconsin Department of Corrections on the Internet at  
54 <http://www.doc.wi.gov> or by telephone at 608-240-5830.

No representation is made as to the legal validity of any provision or the adequacy of any provision in any specific transaction.  
Copyright © 2016 by Wisconsin REALTORS® Association      Drafted by Attorney Debra Peterson Conrad