

NKA LOT #8 OF BLOCK 2, PASCO, WA 99301
LAND FOR SALE | MLS 274035

Naitri-Cities



Corren Heeren
Commercial Broker | 509.302.9976
corren@naitcc.com

89 Gage Blvd
Richland, WA 99352
509.943.5200 | naitri-cities.com

We obtained the information above from sources we believe to be reliable. However, we have not verified its accuracy and make no guarantee, warranty or representation about it. It is submitted subject to the possibility of errors, omissions, change of price, rental or other conditions, prior sale, lease or financing, or withdrawal without notice. We include projections, opinions, assumptions or estimates for example only, and they may not represent current or future performance of the property. You and your tax and legal advisors should conduct your own investigation of the property and transaction.

PROPERTY SUMMARY

INDUSTRIAL PROPERTY FOR SALE



NKA LOT #8 OF BLOCK 2

PASCO, WASHINGTON 99301

PROPERTY OVERVIEW

Shovel-ready light industrial parcel available for sale! Just over 1 AC of land situated in the heart of King City and the hub of Pasco's light industrial area.

This prime location is surrounded by thriving businesses and offers convenient and easy access to the highway. With ample space for a warehouse, distribution center, laydown yard, and semi-truck access, this property offers endless possibilities for your next business venture.

PROPERTY HIGHLIGHTS

- Sale price: \$475,000
- ±1.07 Acres
- Shovel-ready for development
- Easy access to Hwy
- Prime location in industrial area
- Surrounded by thriving businesses
- ±9K Average daily traffic count

Corren Heeren
Commercial Broker | 509.302.9976
corren@naitcc.com

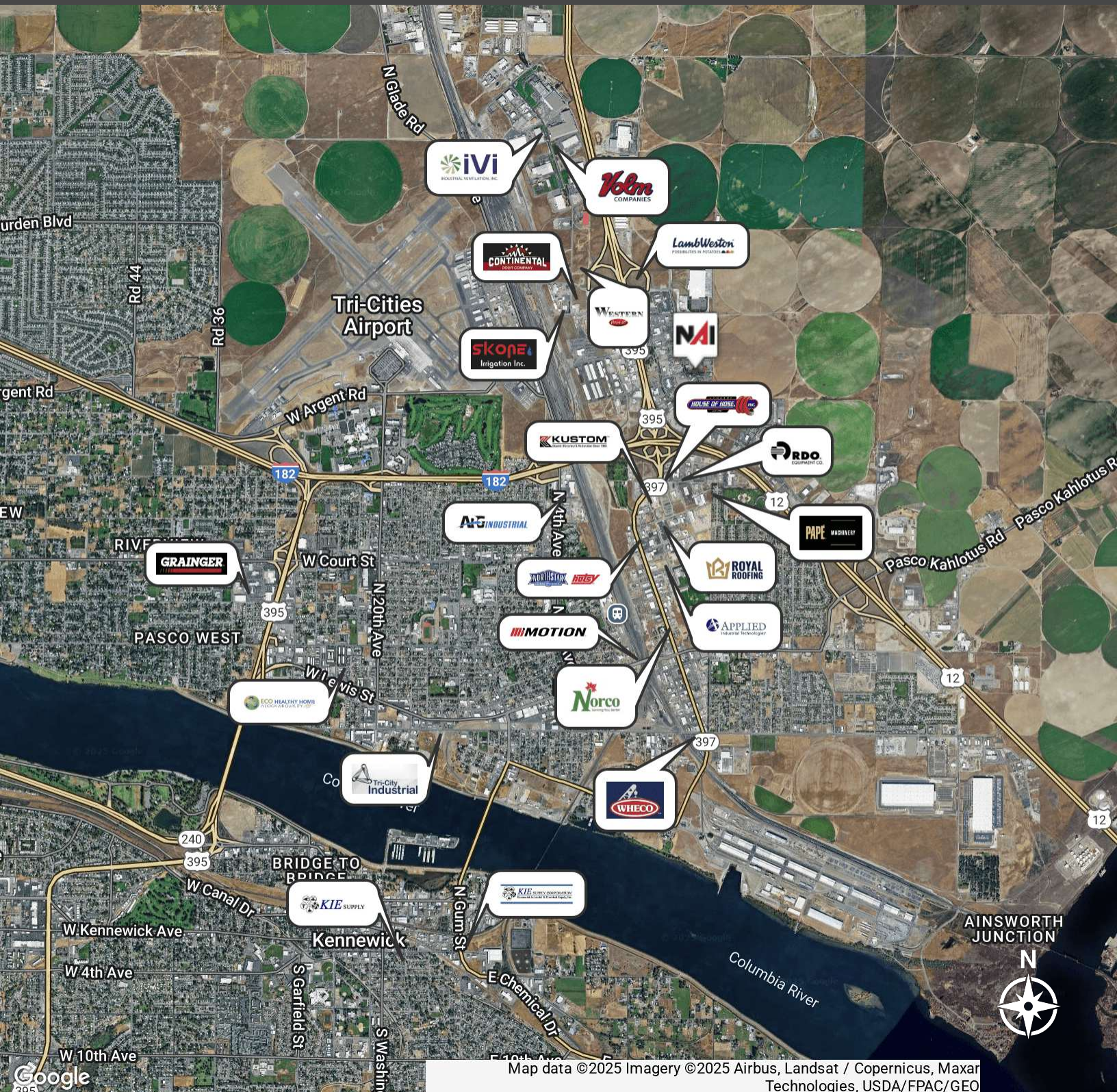
89 Gage Blvd
Richland, WA 99352
509.943.5200 | naitri-cities.com

We obtained the information above from sources we believe to be reliable. However, we have not verified its accuracy and make no guarantee, warranty or representation about it. It is submitted subject to the possibility of errors, omissions, change of price, rental or other conditions, prior sale, lease or financing, or withdrawal without notice. We include projections, opinions, assumptions or estimates for example only, and they may not represent current or future performance of the property. You and your tax and legal advisors should conduct your own investigation of the property and transaction.

INDUSTRIAL COMMUNITY

INDUSTRIAL PROPERTY FOR SALE

NAI Tri-Cities



Map data ©2025 Imagery ©2025 Airbus, Landsat / Copernicus, Maxar Technologies, USDA/FPAC/Geo

Corren Heeren
 Commercial Broker | 509.302.9976
 corren@naitcc.com

89 Gage Blvd
 Richland, WA 99352
 509.943.5200 | naitri-cities.com

We obtained the information above from sources we believe to be reliable. However, we have not verified its accuracy and make no guarantee, warranty or representation about it. It is submitted subject to the possibility of errors, omissions, change of price, rental or other conditions, prior sale, lease or financing, or withdrawal without notice. We include projections, opinions, assumptions or estimates for example only, and they may not represent current or future performance of the property. You and your tax and legal advisors should conduct your own investigation of the property and transaction.

LOCATION MAP

INDUSTRIAL PROPERTY FOR SALE

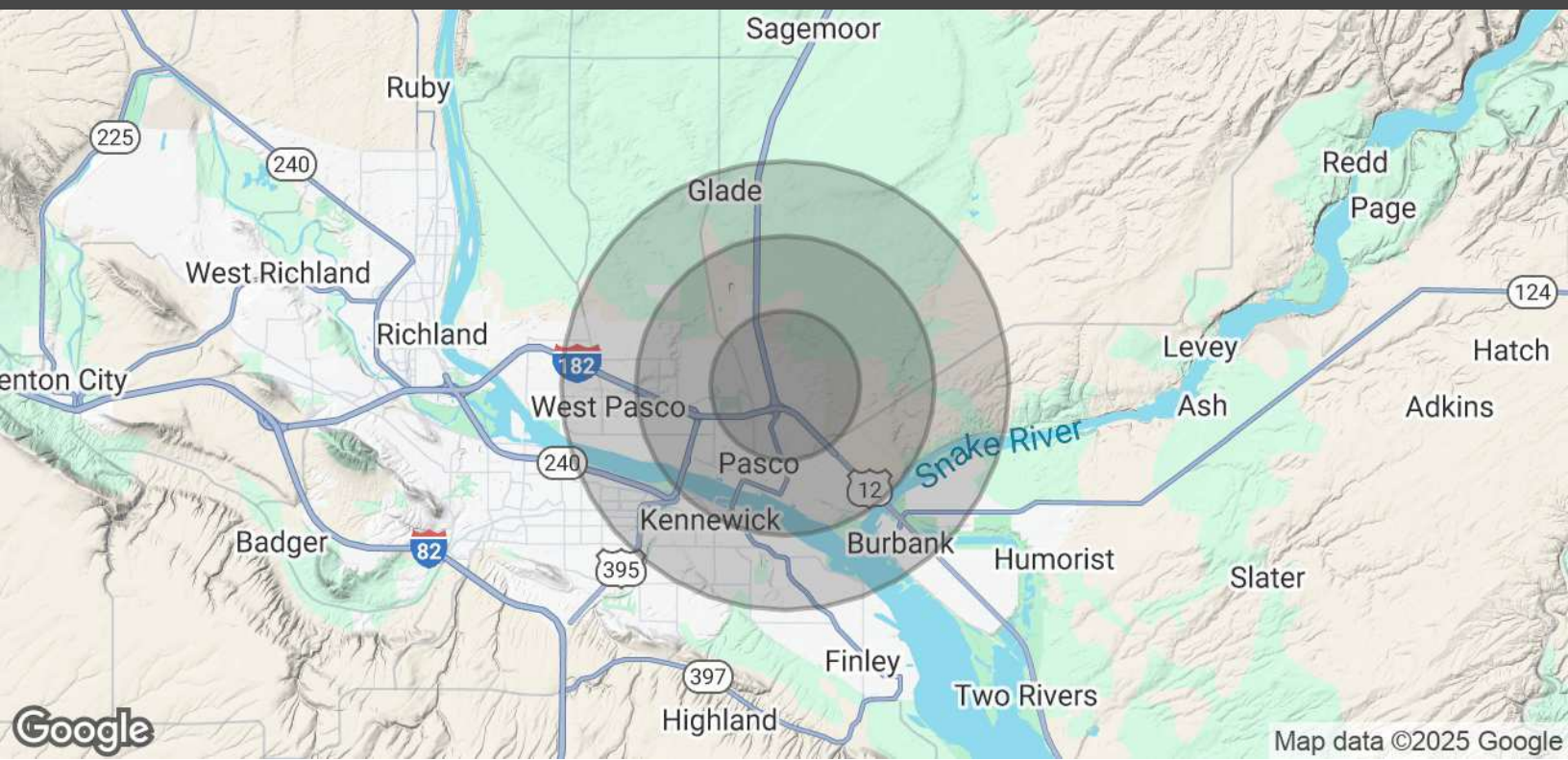
NAITri-Cities



Corren Heeren
Commercial Broker | 509.302.9976
corren@naitcc.com

89 Gage Blvd
Richland, WA 99352
509.943.5200 | naitri-cities.com

We obtained the information above from sources we believe to be reliable. However, we have not verified its accuracy and make no guarantee, warranty or representation about it. It is submitted subject to the possibility of errors, omissions, change of price, rental or other conditions, prior sale, lease or financing, or withdrawal without notice. We include projections, opinions, assumptions or estimates for example only, and they may not represent current or future performance of the property. You and your tax and legal advisors should conduct your own investigation of the property and transaction.



POPULATION	2 MILES	4 MILES	6 MILES
Total Population	14,083	48,152	118,519
Average Age	31	33	34
HOUSEHOLDS & INCOME	2 MILES	4 MILES	6 MILES
Total Households	3,910	14,425	38,284
# of Persons per HH	3.6	3.3	3.1
Average HH Income	\$78,498	\$95,184	\$98,512
Average House Value	\$227,923	\$290,318	\$335,154

Demographics data derived from AlphaMap

Corren Heeren
Commercial Broker | 509.302.9976
corren@naitcc.com

89 Gage Blvd
Richland, WA 99352
509.943.5200 | naitri-cities.com

We obtained the information above from sources we believe to be reliable. However, we have not verified its accuracy and make no guarantee, warranty or representation about it. It is submitted subject to the possibility of errors, omissions, change of price, rental or other conditions, prior sale, lease or financing, or withdrawal without notice. We include projections, opinions, assumptions or estimates for example only, and they may not represent current or future performance of the property. You and your tax and legal advisors should conduct your own investigation of the property and transaction.