

RETAIL / OFFICE / SHOWROOM



SOUTH SHORE PLAZA

4705-4813 Liberty Ave., Vermilion, OH

RATE REDUCED!

\$7psf NNN for 1st year!

Property Features

- Five suites available
- High traffic area off SR-6
- Variety of suites ranging from 1,875 SF - 7,600 SF
- Zoned retail/office/showroom
- Signage available
- Signalized intersection

5 SUITES AVAILABLE

SUITE #	SIZE	
4713	1,875 SF	25' x 75'
4741 - DIVISIBLE		
4741	6,690 SF	80' x 61' -8"
4771	2,500 SF	25' x 100'
4803-4807 - 7,600 SF Contiguous		
4803-4805	5,600 SF	50' x 100'
4807	2,000 SF	25' x 80'

Hiedi Winston

+1 440 752 2617

hwinston@naipvc.com

NO WARRANTY OR REPRESENTATION, EXPRESS OR IMPLIED, IS MADE AS TO THE ACCURACY OF THE INFORMATION CONTAINED HEREIN, AND THE SAME IS SUBMITTED SUBJECT TO ERRORS, OMISSIONS, CHANGE OF PRICE, RENTAL OR OTHER CONDITIONS, PRIOR SALE, LEASE OR FINANCING, OR WITHDRAWAL WITHOUT NOTICE, AND OF ANY SPECIAL LISTING CONDITIONS IMPOSED BY OUR PRINCIPALS NO WARRANTIES OR REPRESENTATIONS ARE MADE AS TO THE CONDITION OF THE PROPERTY OR ANY HAZARDS CONTAINED THEREIN ARE ANY TO BE IMPLIED.

6060 Rockside Woods Blvd. , Suite 402

Independence, Ohio 44131

+1 216 831 3310

naipvc.com

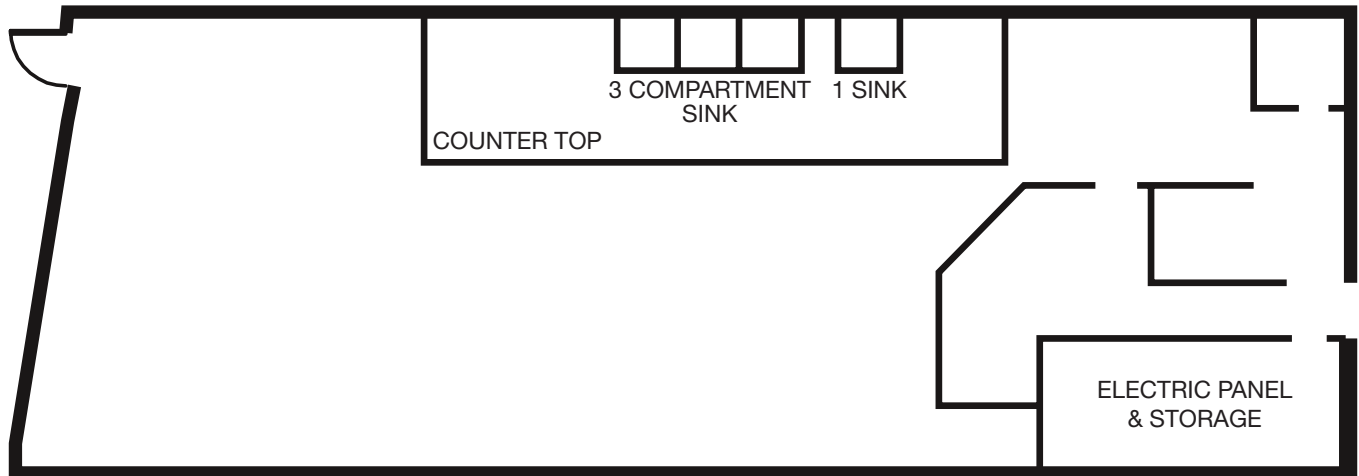


SUITE	TENANT
4705	Dollar General
4709	Flame Tobacco & Vape
4713	VACANT
4721	Anytime Fitness
4723	Dollar Tree
4722	Health Solution Centers
4741	VACANT
4761	Harbourtown Marine
4765	Harbourtown Marine
4767	Hometown Bakery
4769	Doc's Open Box
4771	VACANT
4788	True Value Hardward
4789	Susie's Homestyle Cafe
4793	Lucky Chinese
4799	Sugar Crush Candy
4801	Ruff & Fluff
4803-4805	VACANT
4807	VACANT
4809	Salty Critter
4811	Harborview Storage
STAND ALONE	
4783	McDonalds
4812	Conrads

4713 Liberty Ave. 1,875 SF



REPLACE
UNISEX ADA
TOILET & SINK



Hiedi Winston

+1 440 752 2617

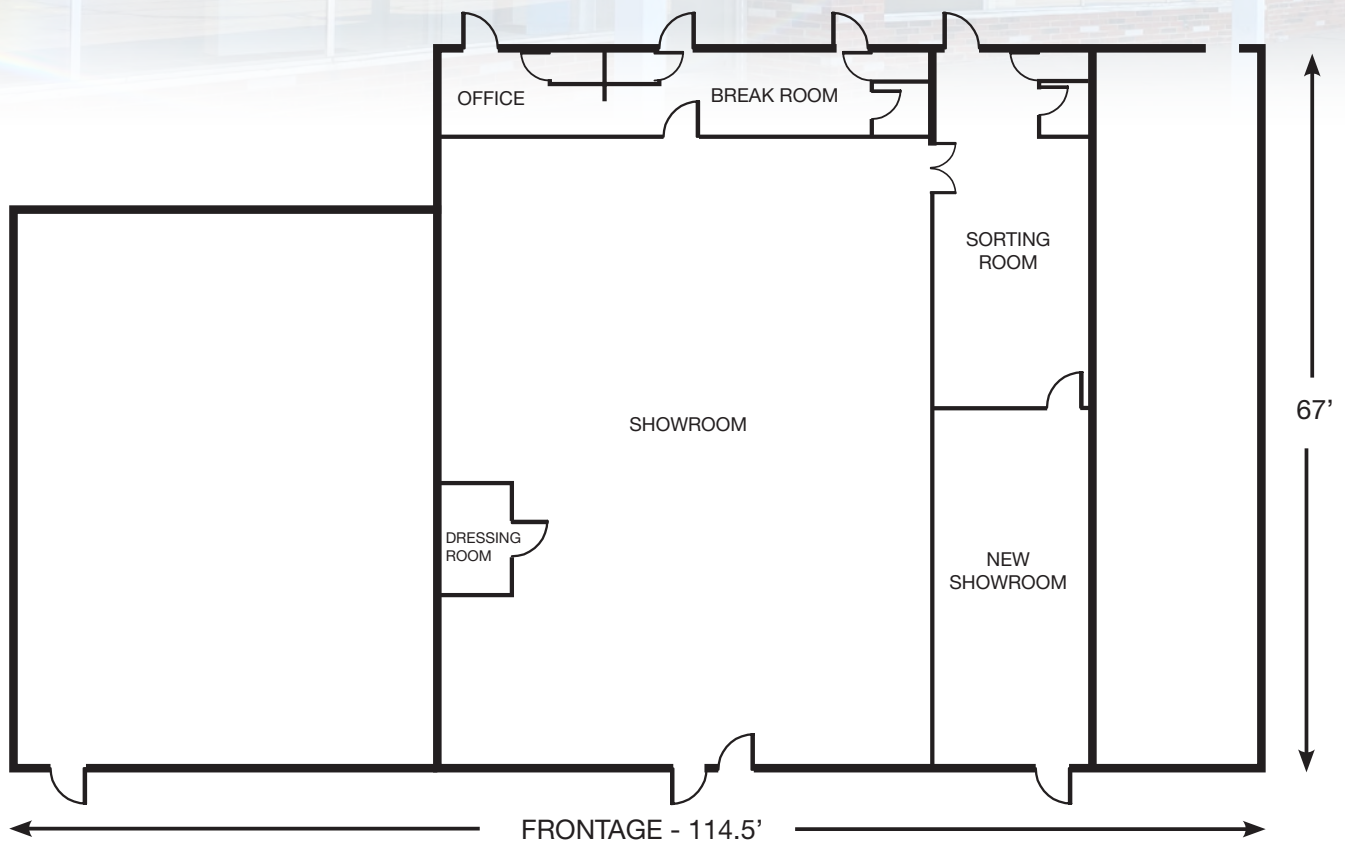
hwinston@naipvc.com

4741 Liberty Ave. 6,690 SF



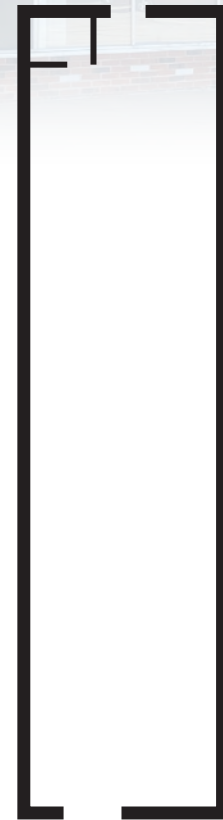
Hiedi Winston
+1 440 752 2617
hwinston@naipvc.com

4741 Liberty Ave. 6,690 SF



Hiedi Winston
+1 440 752 2617
hwinston@naipvc.com

4771 Liberty Ave. 2,500 SF



Hiedi Winston

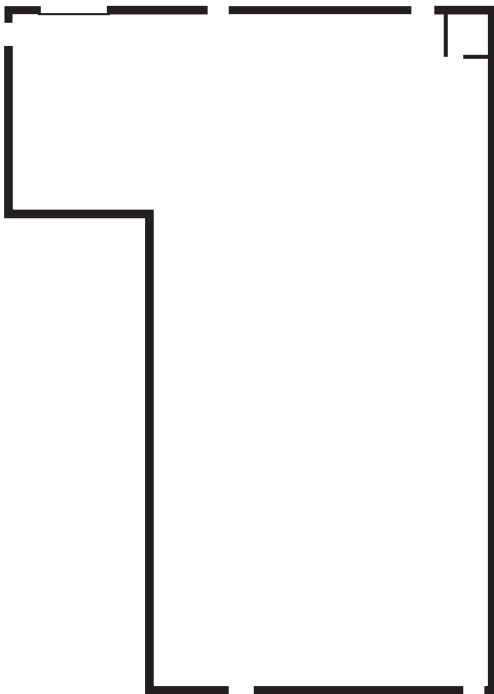
+1 440 752 2617

hwinston@naipvc.com

4803-4805 Liberty Ave. 5,600 SF

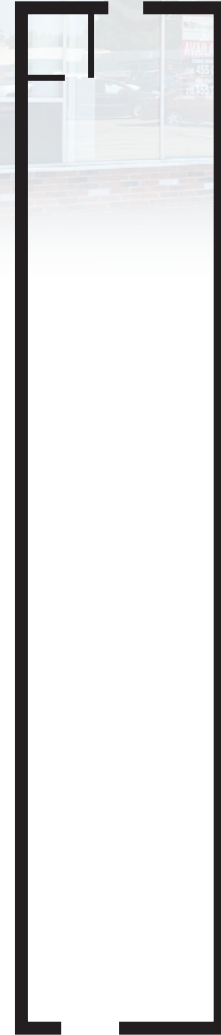


Includes Loading Dock



Hiedi Winston
+1 440 752 2617
hwinston@naipvc.com

4807 Liberty Ave. 2,000 SF

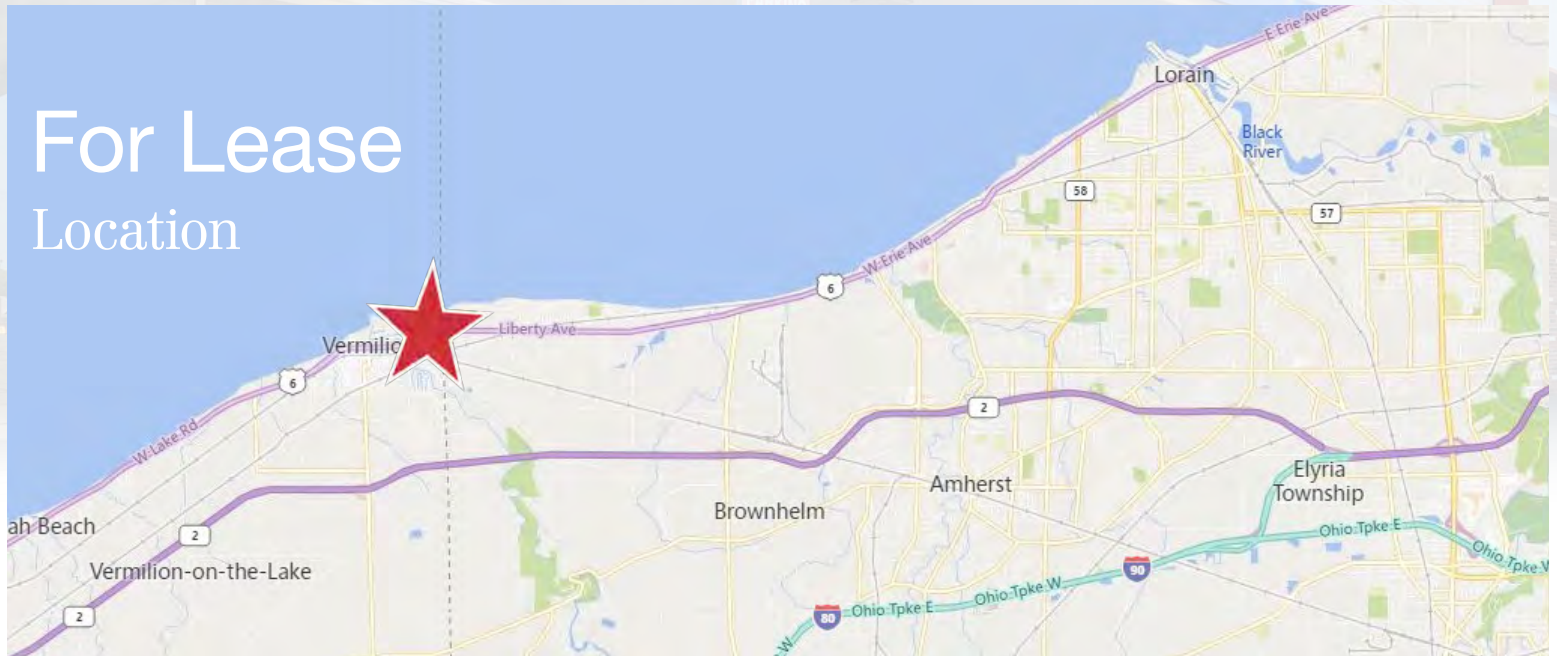


Hiedi Winston

+1 440 752 2617

hwinston@naipvc.com

For Lease Location



Hiedi Winston

+1 440 752 2617

hwinston@naipvc.com

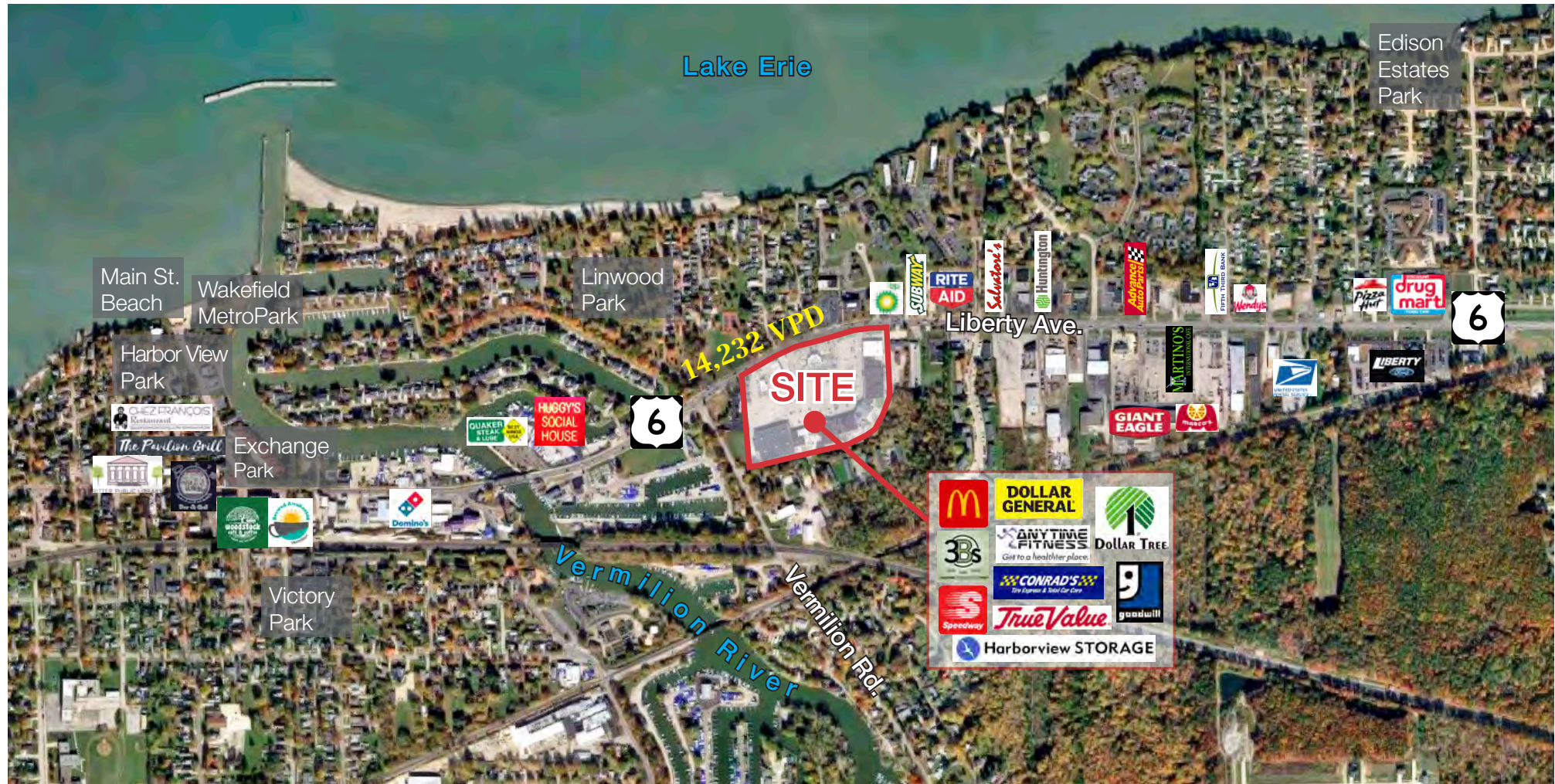
NO WARRANTY OR REPRESENTATION, EXPRESS OR IMPLIED, IS MADE AS TO THE ACCURACY OF THE INFORMATION CONTAINED HEREIN, AND THE SAME IS SUBMITTED SUBJECT TO ERRORS, OMISSIONS, CHANGE OF PRICE, RENTAL OR OTHER CONDITIONS, PRIOR SALE, LEASE OR FINANCING, OR WITHDRAWAL WITHOUT NOTICE, AND OF ANY SPECIAL LISTING CONDITIONS IMPOSED BY OUR PRINCIPALS NO WARRANTIES OR REPRESENTATIONS ARE MADE AS TO THE CONDITION OF THE PROPERTY OR ANY HAZARDS CONTAINED THEREIN ARE ANY TO BE IMPLIED.

6060 Rockside Woods Blvd. , Suite 402

Independence, Ohio 44131

+1 216 831 3310

naipvc.com



Hiedi Winston
+1 440 752 2617
hwinston@naipvc.com

NO WARRANTY OR REPRESENTATION, EXPRESS OR IMPLIED, IS MADE AS TO THE ACCURACY OF THE INFORMATION CONTAINED HEREIN, AND THE SAME IS SUBMITTED SUBJECT TO ERRORS, OMISSIONS, CHANGE OF PRICE, RENTAL OR OTHER CONDITIONS, PRIOR SALE, LEASE OR FINANCING, OR WITHDRAWAL WITHOUT NOTICE, AND OF ANY SPECIAL LISTING CONDITIONS IMPOSED BY OUR PRINCIPALS NO WARRANTIES OR REPRESENTATIONS ARE MADE AS TO THE CONDITION OF THE PROPERTY OR ANY HAZARDS CONTAINED THEREIN ARE ANY TO BE IMPLIED.

6060 Rockside Woods Blvd. , Suite 402
Independence, Ohio 44131
+1 216 831 3310
naipvc.com

KEY FACTS

4,155

Population



Average
Household Size

46.7

Median Age

\$65,846

Median Household
Income

EDUCATION

7%

No High School
Diploma



31%

High School
Graduate



28%

Some College



34%

Bachelor's/Grad/Pr
of Degree

BUSINESS



235

Total Businesses



2,000

Total Employees

EMPLOYMENT



56%

White Collar



30%

Blue Collar



Services

14%



Unemployment
Rate

INCOME



\$65,846

Median Household
Income



\$40,563

Per Capita Income



\$193,573

Median Net Worth

Households By Income

The largest group: \$50,000 - \$74,999 (21.9%)

The smallest group: \$15,000 - \$24,999 (5.6%)

Indicator ▲	Value	Diff	
<\$15,000	7.0%	-1.2%	
\$15,000 - \$24,999	5.6%	-0.9%	
\$25,000 - \$34,999	7.8%	+0.1%	
\$35,000 - \$49,999	13.8%	+0.3%	
\$50,000 - \$74,999	21.9%	+3.1%	
\$75,000 - \$99,999	13.9%	-3.1%	
\$100,000 - \$149,999	18.5%	-0.6%	
\$150,000 - \$199,999	5.7%	-0.2%	
\$200,000+	5.8%	+2.6%	

Bars show deviation from Erie County

This infographic contains data provided by Esri, Esri and Infogroup. The vintage of the data is 2022, 2027.

© 2021 Esri

Hiedi Winston

+1 440 752 2617

hwinston@naipvc.com

KEY FACTS

11,647

Population



Average
Household Size

47.5

Median Age

\$67,432

Median Household
Income

EDUCATION

8%

No High School
Diploma



32%

High School
Graduate



29%

Some College



30%

Bachelor's/Grad/Pr
of Degree

BUSINESS



404

Total Businesses



3,396

Total Employees

EMPLOYMENT



56%

White Collar



30%

Blue Collar



Services

14%



Unemployment
Rate

INCOME



\$67,432

Median Household
Income



\$39,119

Per Capita Income



\$191,352

Median Net Worth

Households By Income

The largest group: \$50,000 - \$74,999 (20.5%)

The smallest group: \$200,000+ (5.0%)

Indicator ▲	Value	Diff	
<\$15,000	7.1%	-1.1%	
\$15,000 - \$24,999	5.3%	-1.2%	
\$25,000 - \$34,999	7.9%	+0.2%	
\$35,000 - \$49,999	14.0%	+0.5%	
\$50,000 - \$74,999	20.5%	+1.7%	
\$75,000 - \$99,999	16.2%	-0.8%	
\$100,000 - \$149,999	18.7%	-0.4%	
\$150,000 - \$199,999	5.4%	-0.5%	
\$200,000+	5.0%	+1.8%	

Bars show deviation from Erie County

This infographic contains data provided by Esri, Esri and Infogroup. The vintage of the data is 2022, 2027.

© 2021 Esri

Hiedi Winston

+1 440 752 2617

hwinston@naipvc.com

KEY FACTS

16,080

Population



Average
Household Size

48.3

Median Age

\$70,689

Median Household
Income

EDUCATION

8%

No High School
Diploma



33%
High School
Graduate



30%
Some College



29%
Bachelor's/Grad/Pr
of Degree

BUSINESS



512

Total Businesses



4,574

Total Employees

EMPLOYMENT



55%

White Collar



31%

Blue Collar



14%

Services



3.4%

Unemployment
Rate

INCOME



\$70,689

Median Household
Income



\$39,754

Per Capita Income



\$218,153

Median Net Worth

Households By Income

The largest group: \$50,000 - \$74,999 (20.5%)

The smallest group: \$15,000 - \$24,999 (4.7%)

Indicator ▲	Value	Diff	
<\$15,000	6.4%	-1.8%	
\$15,000 - \$24,999	4.7%	-1.8%	
\$25,000 - \$34,999	7.3%	-0.4%	
\$35,000 - \$49,999	13.7%	+0.2%	
\$50,000 - \$74,999	20.5%	+1.7%	
\$75,000 - \$99,999	16.8%	-0.2%	
\$100,000 - \$149,999	19.4%	+0.3%	
\$150,000 - \$199,999	6.1%	+0.2%	
\$200,000+	5.1%	+1.9%	

Bars show deviation from Erie County

This infographic contains data provided by Esri, Esri and Infogroup. The vintage of the data is 2022, 2027.

© 2021 Esri

Hiedi Winston

+1 440 752 2617

hwinston@naipvc.com