



MIDTOWN EAST



PRIME RETAIL OPPORTUNITY

MIDTOWN TAMPA

A DESTINATION FOR ALL



ABOUT

- 23 acre, 1.8M SF mixed-used development
- 630K SF of class A office, 190K SF of retail, 400 residential units, and a dual branded Marriott hotel
- Anchored by two wellness amenities, the 3 acre Midtown Lake, and the 1 acre Midtown Commons

LOCATION

- Bounded by I-275, N. Dale Mabry, Himes and Cypress
- Five points of ingress and egress with 300,000 car traffic per day
- 5 minutes to Tampa International Airport, 10 minutes to Downtown Tampa, and 25 minutes to Downtown St. Petersburg

COMING Q1 2025

MIDTOWN EAST

The brand new 18 story tower with 7,620 SF of wrap around, high visibility retail available on the ground floor

W. Cypress St

N. Himes Ave

MIDTOWN TAMPA RETAIL SITE PLAN



High quality tenant mix with best-in-class national and local operators

- 7,620 SF prime retail with 3,500 of outdoor wrap around space available

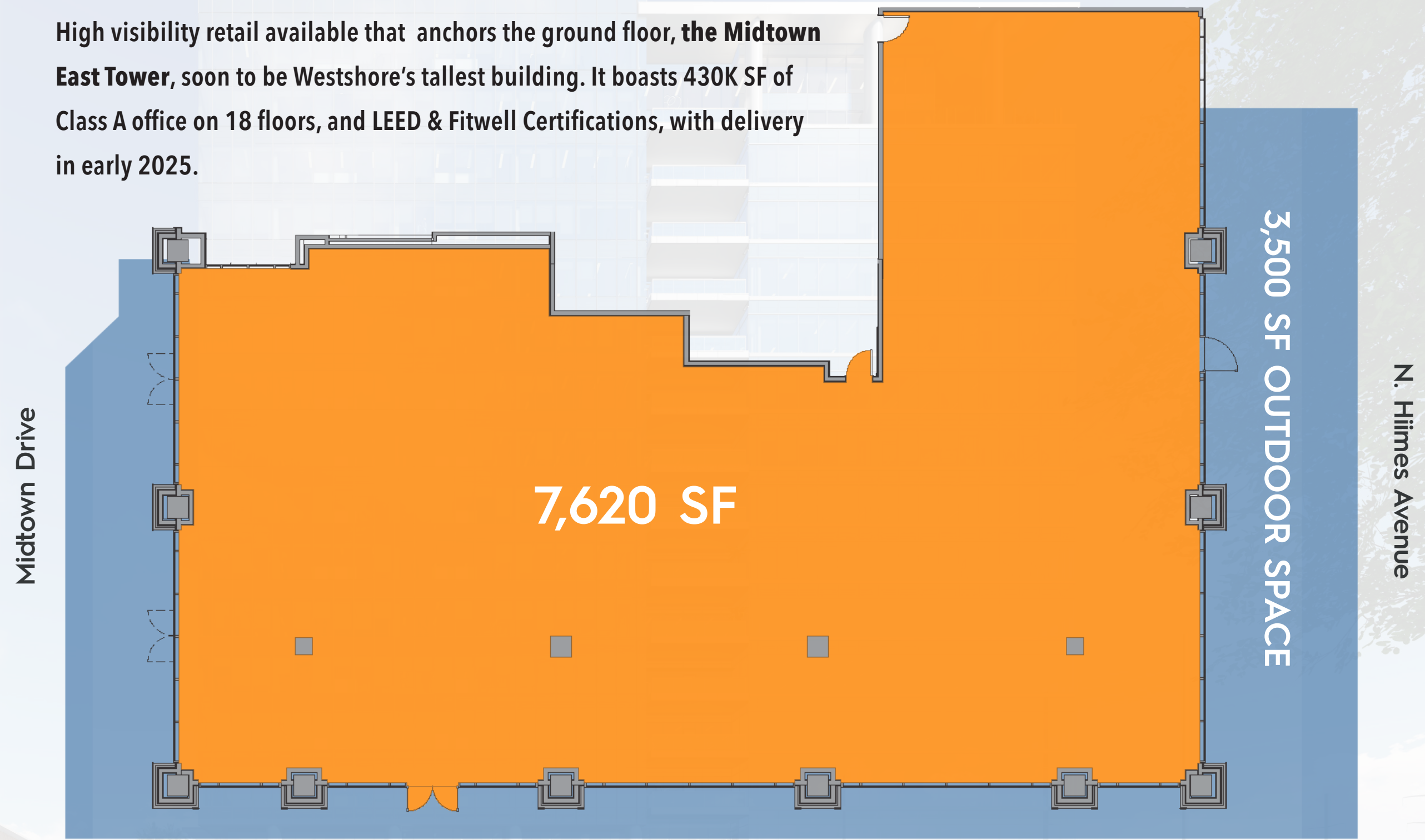
- High visibility on three sides, including from N. Himes Ave. and into the heart of Midtown Tampa

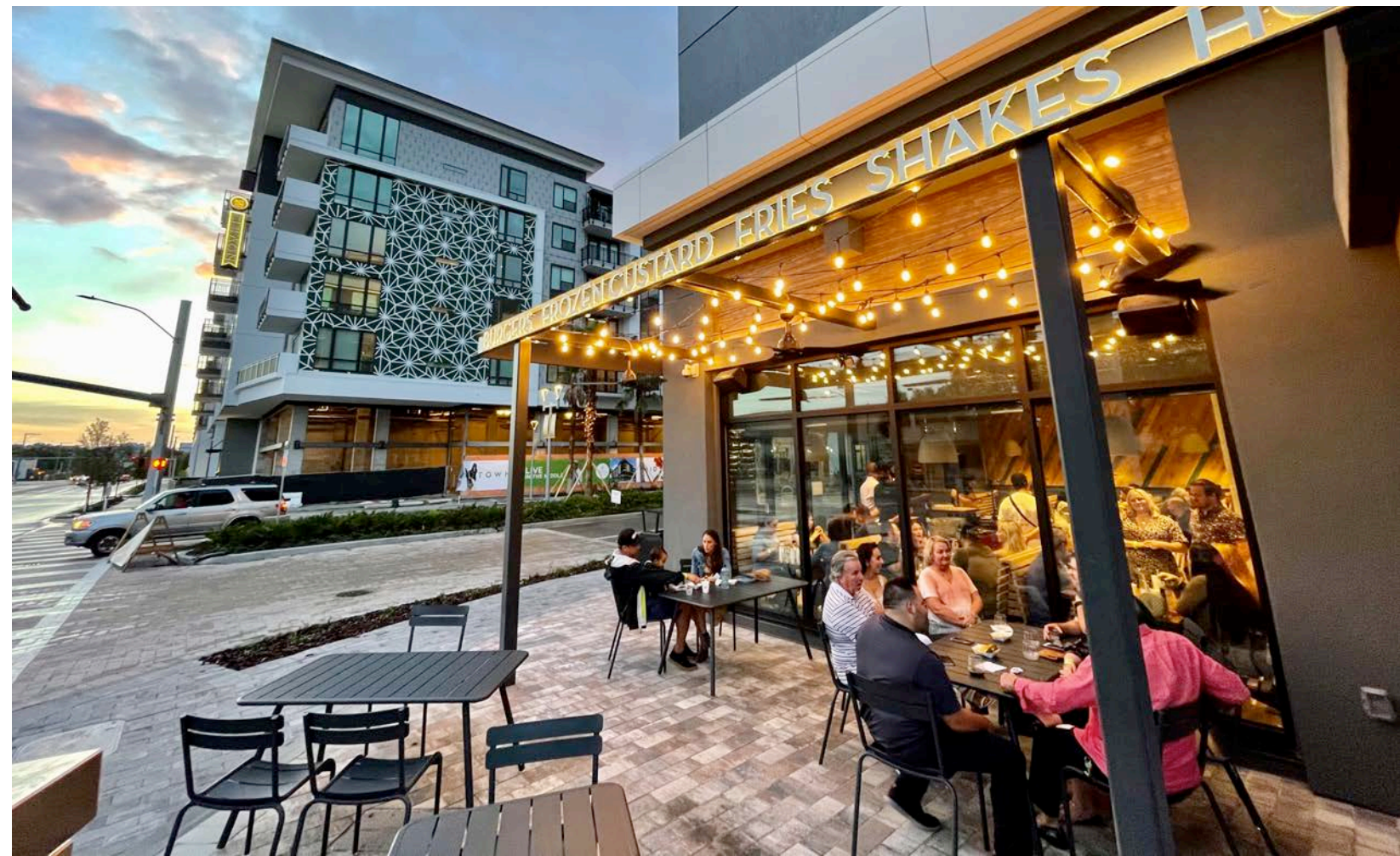
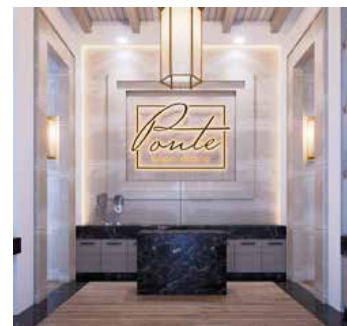
- Spacious 17' ceilings and minimal columns

- Outdoor space available for dining opportunity

- Potential direct connection to the office building

High visibility retail available that anchors the ground floor, the **Midtown East Tower**, soon to be Westshore's tallest building. It boasts 430K SF of Class A office on 18 floors, and LEED & Fitwell Certifications, with delivery in early 2025.







THE PALMETTO

