

EXECUTIVE SUMMARY

• Dairy Rd Titusville, FL 32796



OFFERING SUMMARY

Available SF:	14.7 Acres
Lease Rate:	Negotiable
Lot Size:	14.7 Acres
Zoning:	CC
Traffic Count:	20,300

PROPERTY OVERVIEW

This +/-14.7 acre site offers an abundance of opportunities, with the community commercial zoning and Florida's SB102 Live Local Act the options for development are endless. Lightle Beckner Robison, Inc. is excited to offer the corner of this site for commercial ground lease or build-to-suit. Located on the corner of Dairy Road and US Highway in Titusville offering exposure to over 20,300 average daily drivers this site is suitable for various commercial and retail users. With a brand new development approved across the street and the surrounding monuments such as Eastern Florida State College, Parrish Medical Center, Chain of Lakes Park, and an abundance of residential neighborhoods this site is sure to be prime opportunity for your business.

LOCATION OVERVIEW

Located within the City of Titusville on Florida's Space Coast, this ideal mixed use development site is situated on the corner of Dairy Road and US Highway 1 just a few miles north of the the NASA causeway bridge and a few miles south of State Road 46 in Mims.

MIKE MOSS, SIOR

Principal | Industrial Team Director
321.543.2498
mike@teamlbr.com

JEFFERY T. ROBISON, CCIM

President | Broker
321.722.0707 X13
jeff@teamlbr.com

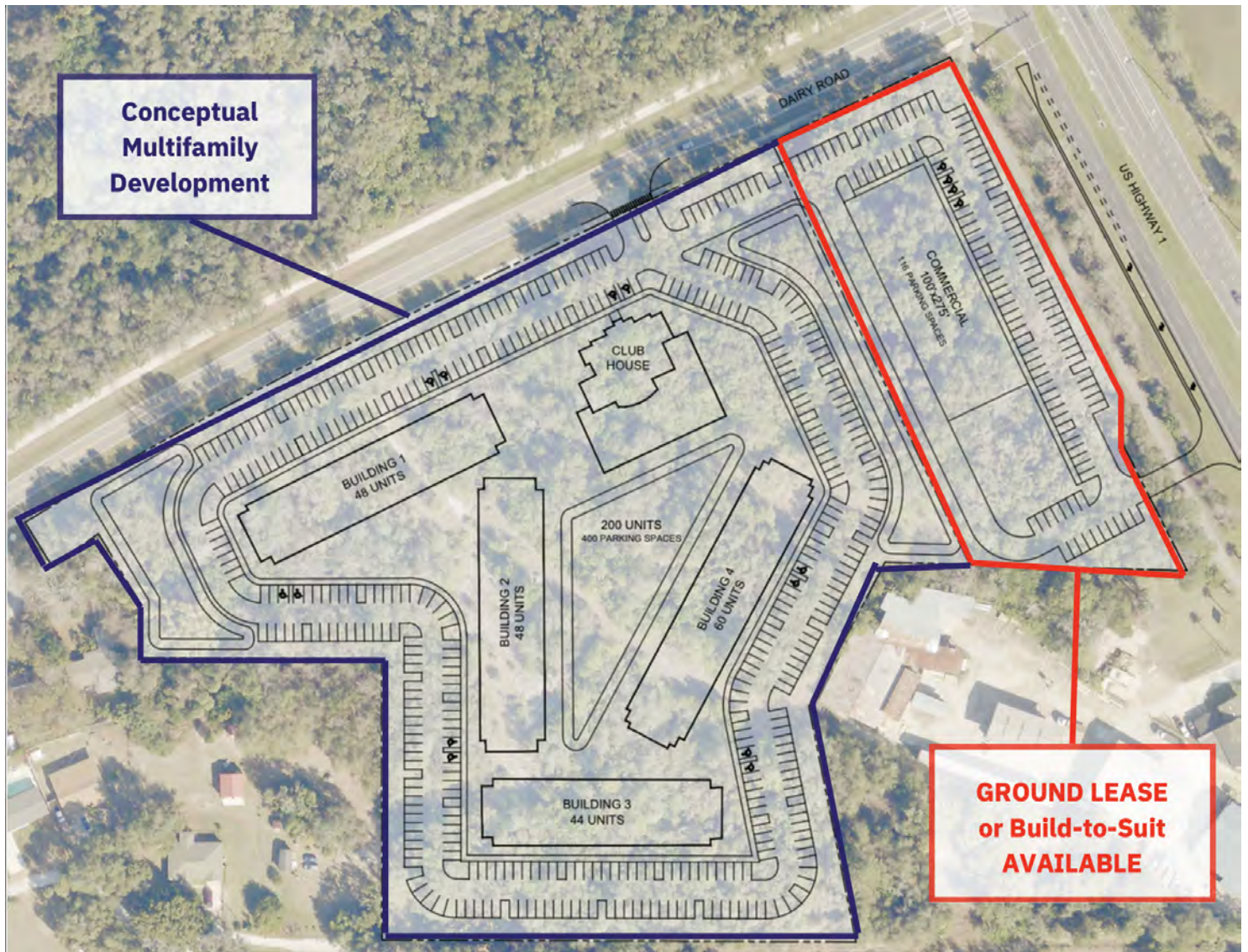
Lightle Beckner Robison, Inc.

321.722.0707 • teamlbr.com
70 W. Hibiscus Blvd.,
Melbourne, FL 32901

Information contained herein has been obtained through sources deemed reliable but cannot be guaranteed as to its accuracy. A purchaser or lessee is expected to verify all information to his/her own satisfaction. Zoning information subject to change and not warranted. Always confirm current requirements with local governing agencies.

SITE PLAN | CONCEPTUAL

• Dairy Rd Titusville, FL 32796



MIKE MOSS, SIOR

Principal | Industrial Team Director
321.543.2498
mike@teamlbr.com

JEFFERY T. ROBISON, CCIM

President | Broker
321.722.0707 X13
jeff@teamlbr.com

Lightle Beckner Robison, Inc.

321.722.0707 • teamlbr.com
70 W. Hibiscus Blvd.,
Melbourne, FL 32901

Information contained herein has been obtained through sources deemed reliable but cannot be guaranteed as to its accuracy. A purchaser or lessee is expected to verify all information to his/her own satisfaction. Zoning information subject to change and not warranted. Always confirm current requirements with local governing agencies.

SITE MAP

• Dairy Rd Titusville, FL 32796



MIKE MOSS, SIOR

Principal | Industrial Team Director
321.543.2498
mike@teamlbr.com

JEFFERY T. ROBISON, CCIM

President | Broker
321.722.0707 X13
jeff@teamlbr.com

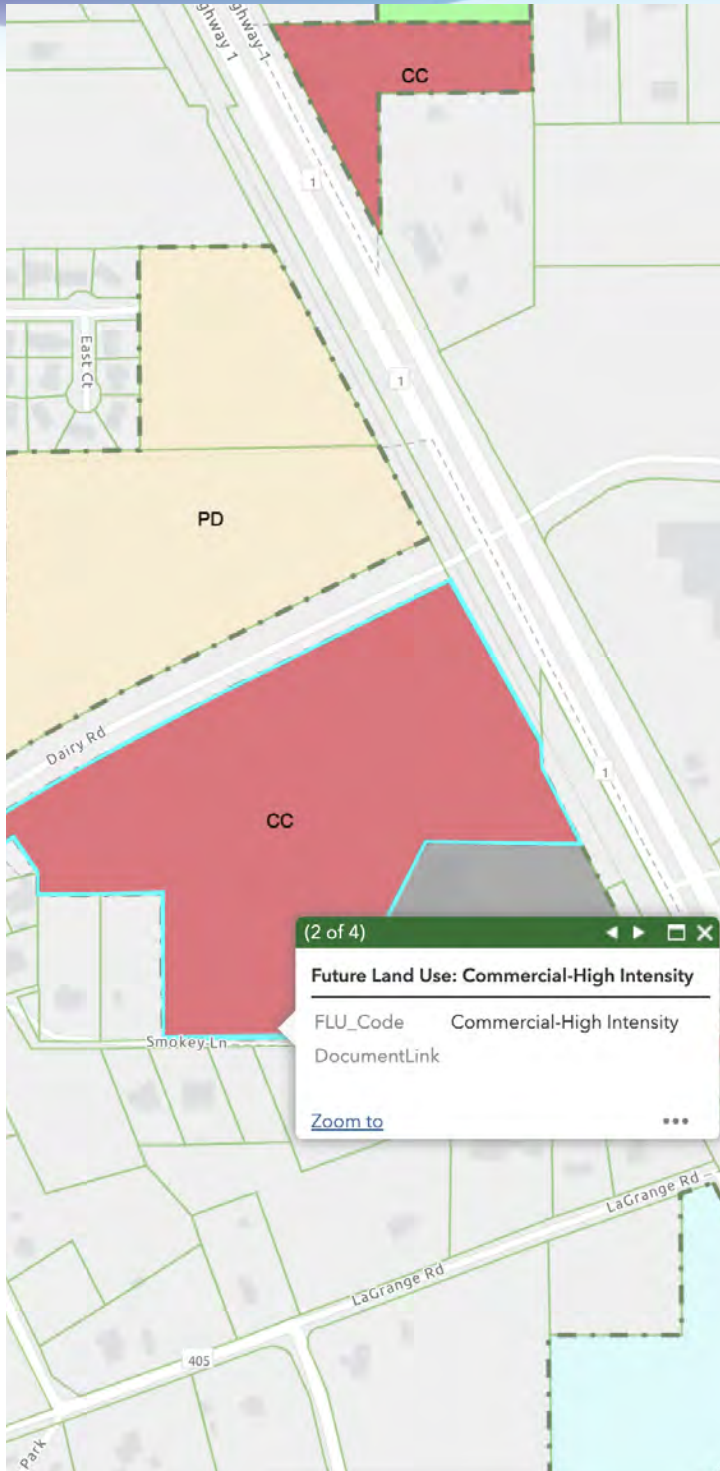
Lightle Beckner Robison, Inc.

321.722.0707 • teamlbr.com
70 W. Hibiscus Blvd.,
Melbourne, FL 32901

Information contained herein has been obtained through sources deemed reliable but cannot be guaranteed as to its accuracy. A purchaser or lessee is expected to verify all information to his/her own satisfaction. Zoning information subject to change and not warranted. Always confirm current requirements with local governing agencies.

ZONING

• Dairy Rd Titusville, FL 32796



The Community Commercial (CC) district is established for general commercial activity. This district is designed to provide for a wide range of permitted uses and | conditional uses that offer goods and services of both a convenience and desirable nature to shoppers. This district will serve a group of neighborhoods and larger trade areas. Development within this district requires larger land areas and is primarily located along arterial thoroughfares and major street intersections. It is not the intent of this district that it shall be used to encourage the extension of strip commercial areas and the development of intersections is preferable to linear development.

MIKE MOSS, SIOR

Principal | Industrial Team Director
321.543.2498
mike@teamlbr.com

JEFFERY T. ROBISON, CCIM

President | Broker
321.722.0707 X13
jeff@teamlbr.com

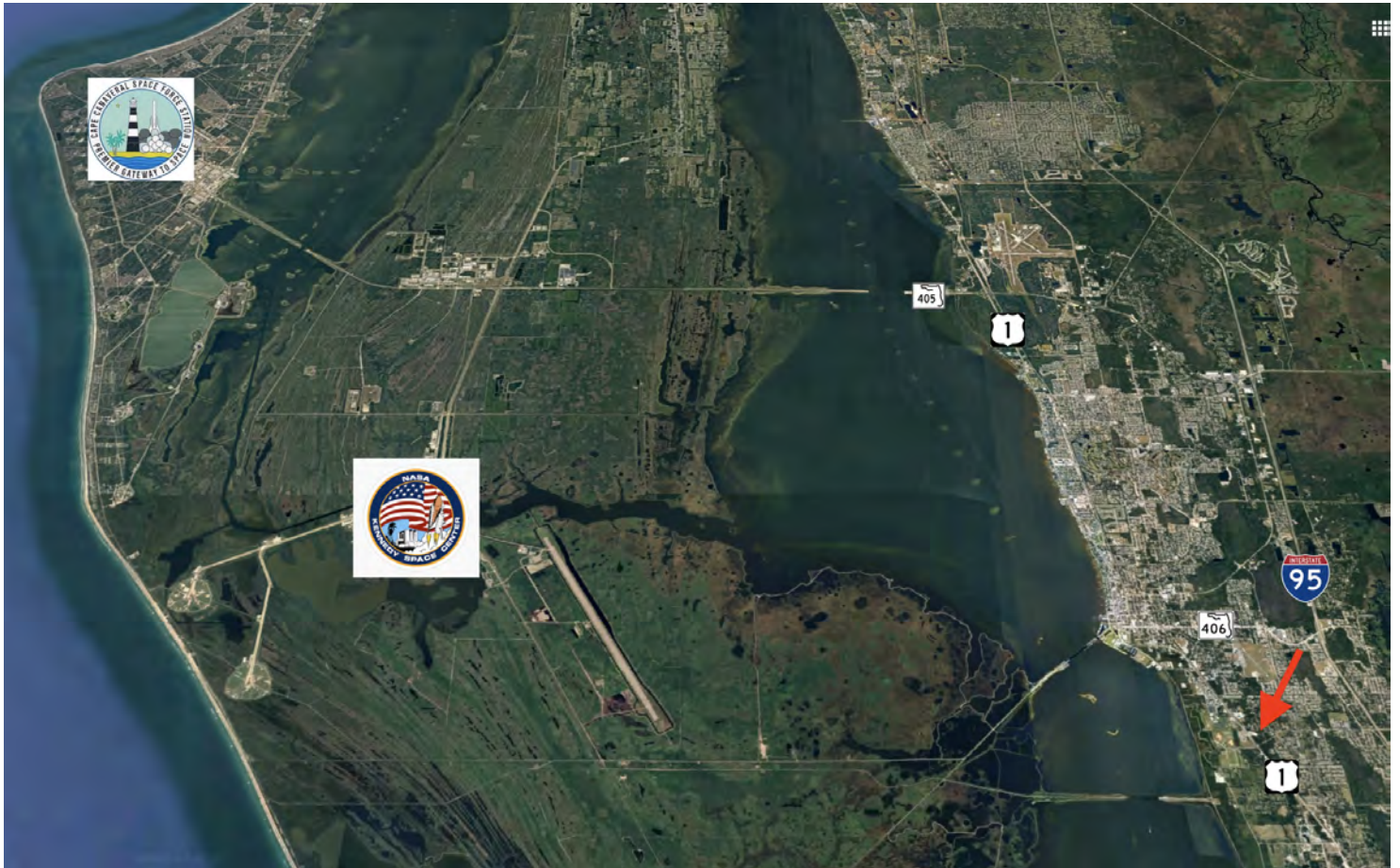
Lightle Beckner Robison, Inc.

321.722.0707 • teamlbr.com
70 W. Hibiscus Blvd.,
Melbourne, FL 32901

Information contained herein has been obtained through sources deemed reliable but cannot be guaranteed as to its accuracy. A purchaser or lessee is expected to verify all information to his/her own satisfaction. Zoning information subject to change and not warranted. Always confirm current requirements with local governing agencies.

AERIAL

• Dairy Rd Titusville, FL 32796



MIKE MOSS, SIOR

Principal | Industrial Team Director
321.543.2498
mike@teamlbr.com

JEFFERY T. ROBISON, CCIM

President | Broker
321.722.0707 X13
jeff@teamlbr.com

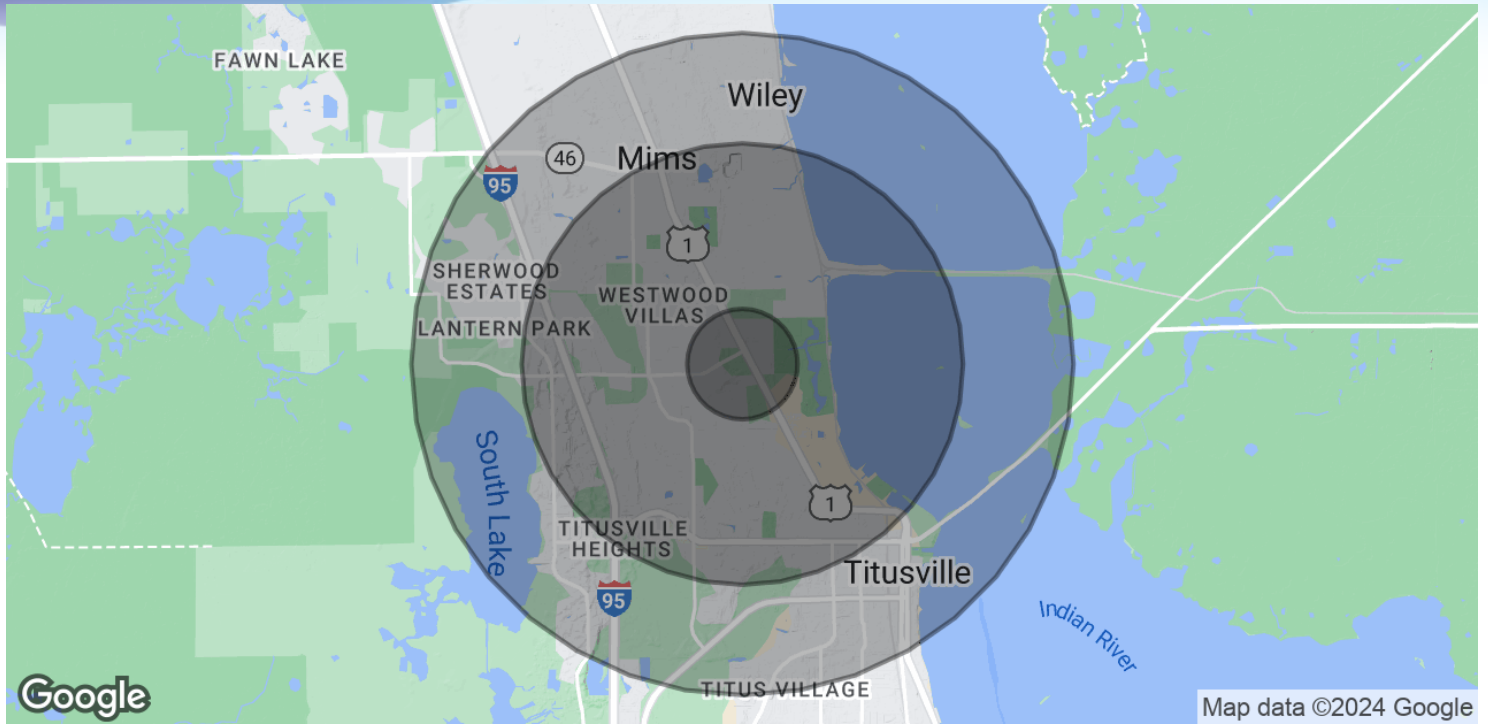
Lightle Beckner Robison, Inc.

321.722.0707 • teamlbr.com
70 W. Hibiscus Blvd.,
Melbourne, FL 32901

Information contained herein has been obtained through sources deemed reliable but cannot be guaranteed as to its accuracy. A purchaser or lessee is expected to verify all information to his/her own satisfaction. Zoning information subject to change and not warranted. Always confirm current requirements with local governing agencies.

DEMOGRAPHICS MAP & REPORT

• Dairy Rd Titusville, FL 32796



POPULATION

	0.5 MILES	2 MILES	3 MILES
Total Population	1,099	14,090	26,234
Average Age	47	46	46
Average Age (Male)	0	0	0
Average Age (Female)	0	0	0

HOUSEHOLDS & INCOME

	0.5 MILES	2 MILES	3 MILES
Total Households	442	5,799	10,998
# of Persons per HH	2.5	2.4	2.4
Average HH Income	\$58,511	\$68,543	\$73,359
Average House Value	\$242,354	\$254,616	\$258,524

Demographics data derived from AlphaMap

MIKE MOSS, SIOR

Principal | Industrial Team Director
321.543.2498
mike@teamlbr.com

JEFFERY T. ROBISON, CCIM

President | Broker
321.722.0707 X13
jeff@teamlbr.com

Lightle Beckner Robison, Inc.

321.722.0707 • teamlbr.com
70 W. Hibiscus Blvd.,
Melbourne, FL 32901

Information contained herein has been obtained through sources deemed reliable but cannot be guaranteed as to its accuracy. A purchaser or lessee is expected to verify all information to his/her own satisfaction. Zoning information subject to change and not warranted. Always confirm current requirements with local governing agencies.