

Turn Key Medical Office/ Surgery Center/ Med Spa



2506 W Saint Isabel St., Tampa, FL 33607

Centrally located in the heart of the St. Joseph's Hospital Medical District. Completely gutted and remodeled (completed Feb. 2024) to Class A Medical Space. This property is ready to take the next owners practice to another level! Call Christopher Parrado for a tour!



Property Highlights

- Wonderful floorplan with a well thought out flow includes:
 - Amazing reception area
 - 3 Bathrooms (1 ADA Compliant)
 - 8 treatment rooms
 - Surgery/procedure room
 - 2 nurses stations
 - 3 Dr's offices
 - Recovery room
 - Multiple storage rooms including 960 SF upstairs storage
 - Laundry room
- 2 HVAC units of which one is new, the second is less than 3 years old.
- Roof is less than 3 years old

FOR MORE INFORMATION CONTACT

Chris Parrado, Sales Associate

Off 813.242.6464 Ext 23

Cel 813.294.7187

cparrado@alcommercialinc.com

www.alcommercialinc.com



Turn Key Medical Office/ Surgery Center/ Med Spa



FOR MORE INFORMATION CONTACT

Chris Parrado, Sales Associate

Off 813.242.6464 Ext 23

Cel 813.294.7187

cparrado@alcommercialinc.com

www.alcommercialinc.com



Turn Key Medical Office/ Surgery Center/ Med Spa



FOR MORE INFORMATION CONTACT

Chris Parrado, Sales Associate

Off 813.242.6464 Ext 23

Cel 813.294.7187

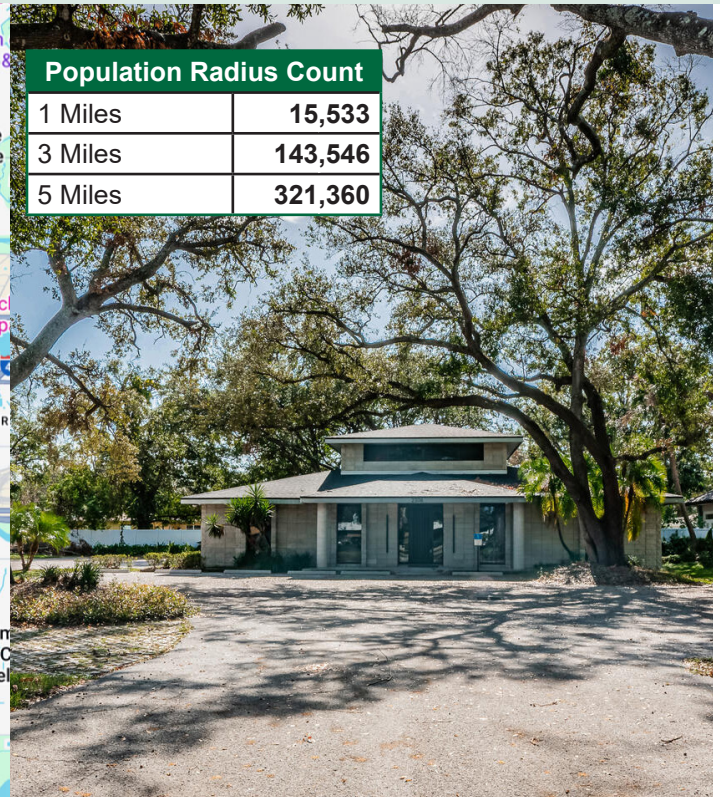
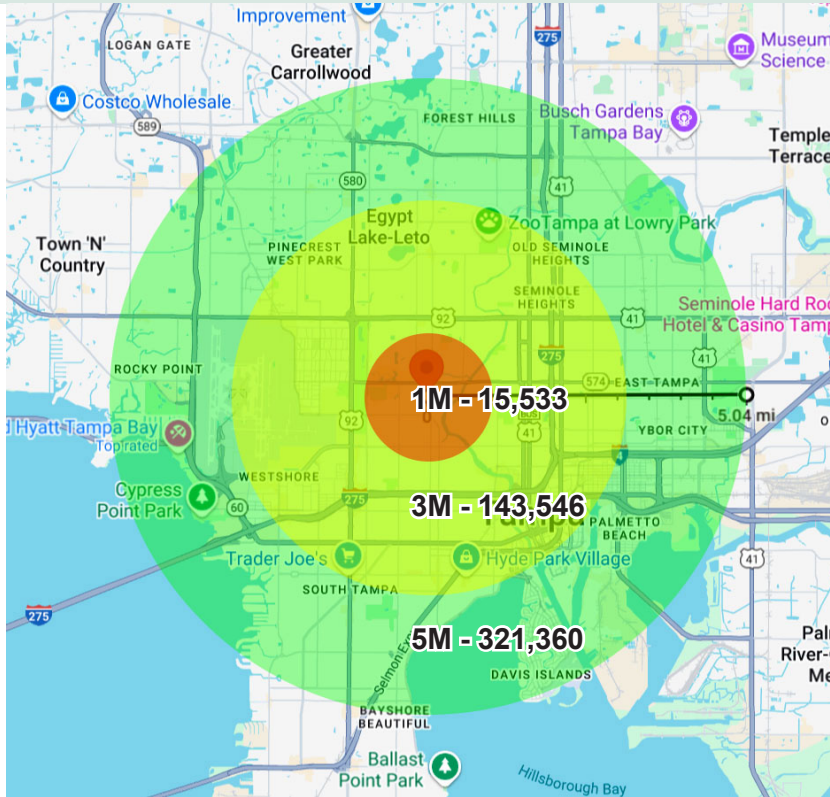
cparrado@alcommercialinc.com

www.alcommercialinc.com



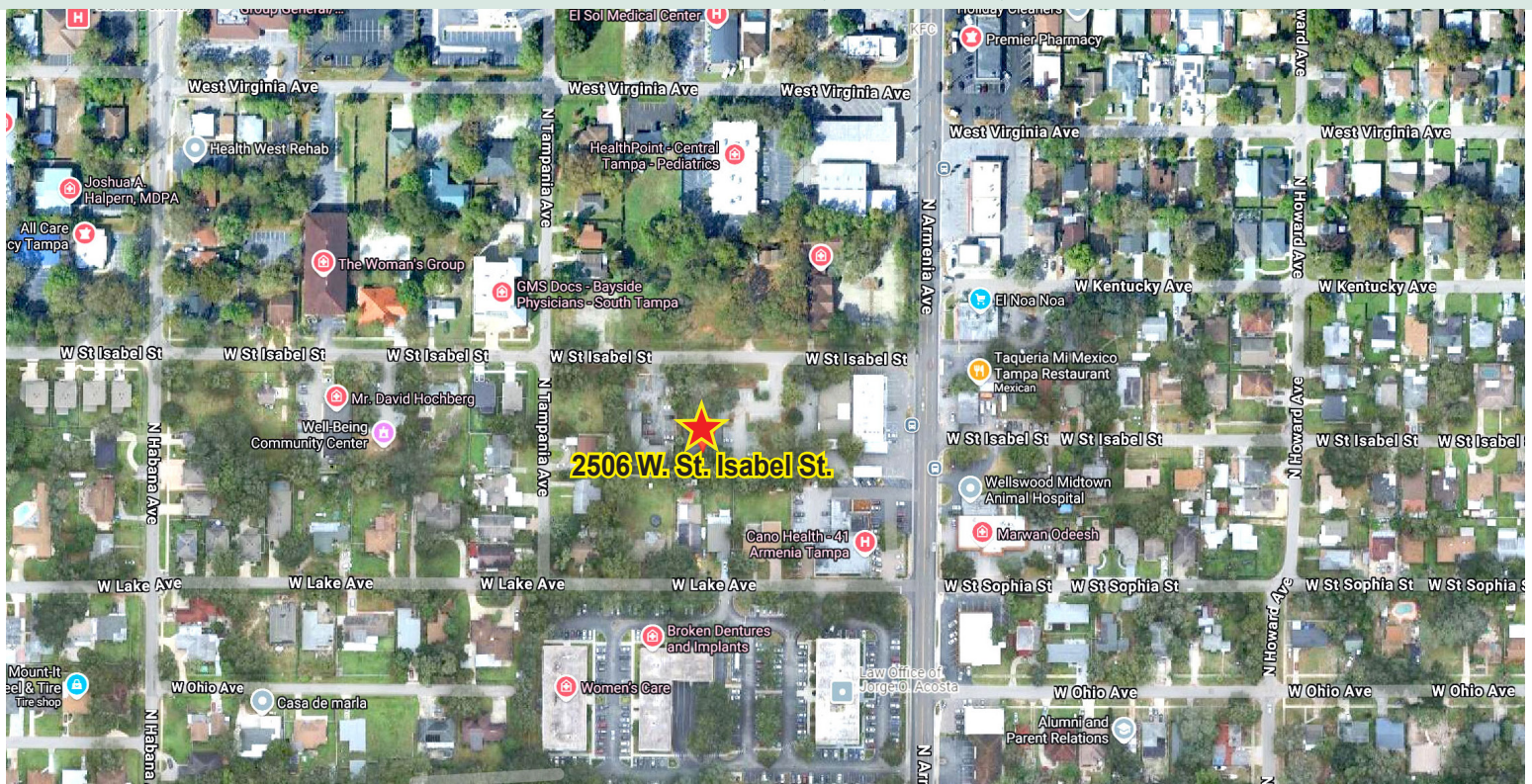
Turn Key Medical Office/ Surgery Center/ Med Spa

Population Radius Map



Population Radius Count	
1 Miles	15,533
3 Miles	143,546
5 Miles	321,360

2506 W Saint Isabel St., Tampa, FL 33607



FOR MORE INFORMATION CONTACT

Chris Parrado, Sales Associate

Off 813.242.6464 Ext 23

Cel 813.294.7187

cparrado@alcommercialinc.com

www.alcommercialinc.com



Licensed Real Estate Broker