

FOR LEASE: 5 AIRPARK VISTA BLVD



For Lease: \$0.85 psf/mo

16,750 SF Industrial

3 Acres

Heavy Power

Great Manufacturing Facility



Lyle Chamberlain, SIOR, CCIM

Lee & Associates Reno

lchamberlain@lee-associates.com

Lic# B 1000716

(775) 851-5310



LISTING DATA

AVAILABLE SF: 16,759
RATE: \$0.85 PSF NNN

PROPERTY DATA

JURISDICTION: LYON COUNTY
ZONING: GI (GENERAL INDUSTRIAL)
SPACE AVAILABLE: 16,759
DATE AVAILABLE: IMMEDIATE
POWER: 800 AMPS 277/480V– 3 PHASE POWER
CLEAR HEIGHT: 22'
LOADING: GRADE & DOCK DOORS



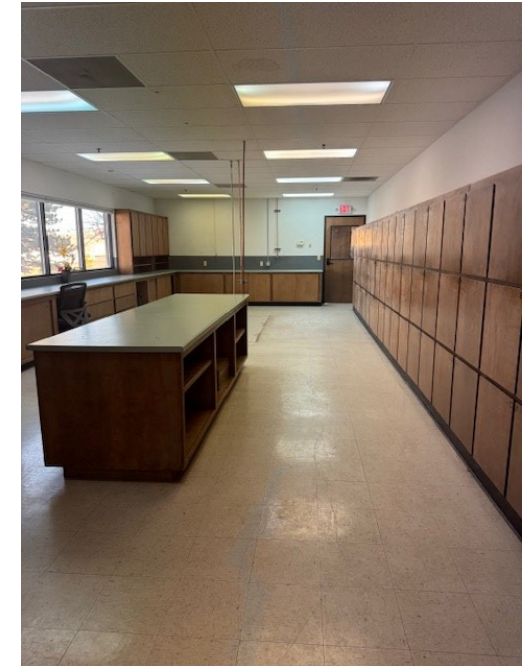
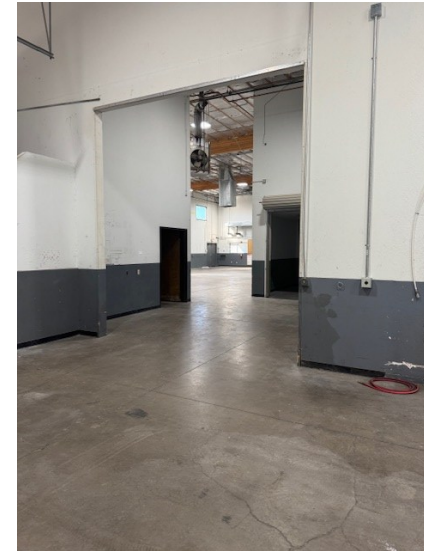
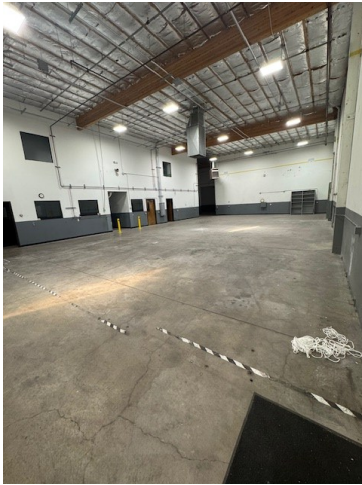
PROPERTY HIGHLIGHTS

- ◆ **SPECIALIZED BUILDOUT :** This has been a machine shop for the last 4 years. Electrical in place and abundant. Great Office space built out and 2 levels.
- ◆ **HEAVY POWER:** Ample power for most manufacturing needs!
- ◆ **TRANSPORTATION CORRIDOR:** Great, accessible location for North/south. East/West transportation corridor located on US Hwy 50.
- ◆ **ACREAGE:** Situated on 3 acres, there is room for what you might need to add.!!



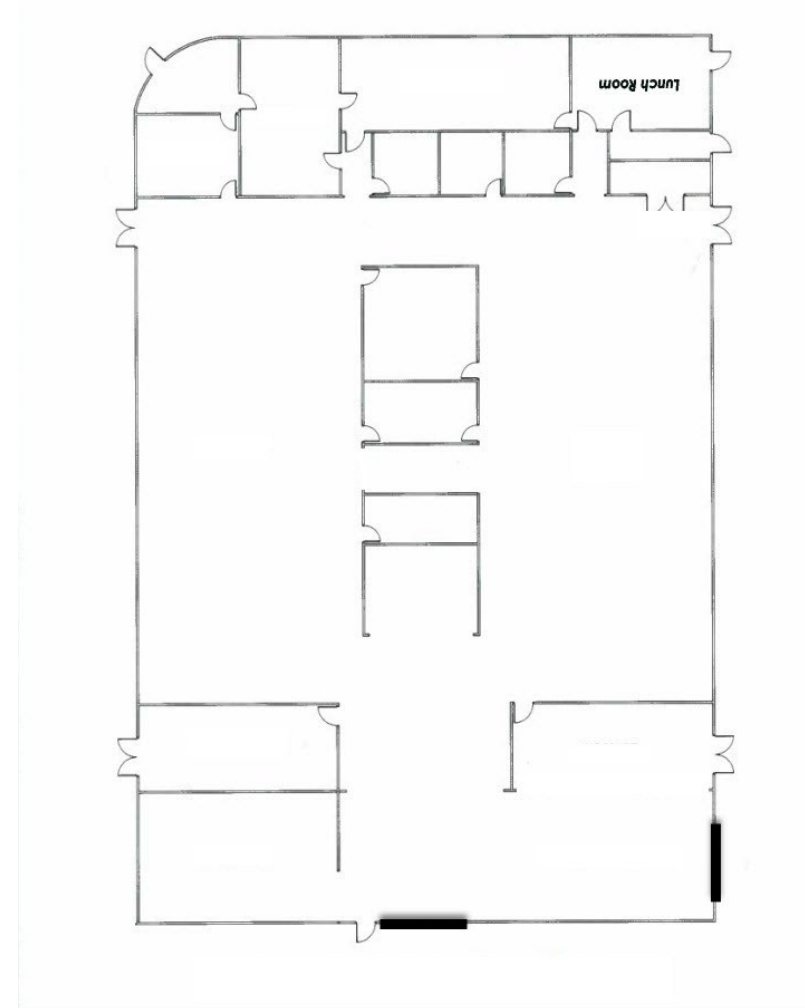
Lyle Chamberlain, SIOR, CCIM
Lee & Associates Reno
lchamberlain@lee-associates.com
Lic# B 1000716
(775) 851-5310

FOR LEASE: 5 AIRPARK VISTA BLVD



Lyle Chamberlain, SIOR, CCIM
Lee & Associates Reno
lchamberlain@lee-associates.com
Lic# B 1000716
(775) 851-5310

SITE PLAN



Lyle Chamberlain, SIOR, CCIM
Lee & Associates Reno
lchamberlain@lee-associates.com
Lic# B 1000716
(775) 851-5310