

RETAIL & OFFICE PROPERTY // FOR LEASE

RETAIL & OFFICE SUITES FOR LEASE AT FARMINGTON VILLAGE COMMONS

32770 - 32780 GRAND RIVER AVE

FARMINGTON, MI 48336



- Prime walkable downtown location
- Versatile mixed-use office/retail space
- High visibility for businesses
- Professional management and maintenance
- Modern and well-maintained facilities
- Ample parking



26555 Evergreen Road, Suite 1500

Southfield, MI 48076

248.358.0100

pacommercial.com

We obtained the information above from sources we believe to be reliable. However, we have not verified its accuracy and make no guarantee, warranty or representation about it. It is submitted subject to the possibility of errors, omissions, change of price, rental or other conditions, prior sale, lease or financing, or withdrawal without notice. We include projections, opinions, assumptions or estimates for example only, and they may not represent current, past or future performance of the property. You and your tax and legal advisors should conduct your own investigation of the property and transaction.

EXECUTIVE SUMMARY



Lease Rate	\$15.00 - 18.00 SF/YR (GROSS; NNN)
-------------------	---

OFFERING SUMMARY

Building Size:	54,975 SF
Available SF:	1,468 - 1,625 SF
Year Built:	1987
Zoning:	Central Business District
Market:	Detroit
Submarket:	Farmington/Farmington Hills
Traffic Count:	14,858

PROPERTY OVERVIEW

Downtown Farmington begins at The Village Commons and is a walkable and vibrant suburban downtown area with over 200 businesses and shops. There is currently one office suite available for lease in this busy mixed-use development, which provides the opportunity for success with a rich mix of retail-office-service businesses. Other locations in the downtown Farmington area do not have abundant parking with no time limits. Professional management makes for easy occupancy.

LOCATION OVERVIEW

Located on the north side of Grand River Ave, between Power and Farmington Roads. Nestled within this bustling area, tenants will discover a wealth of dining options from trendy cafes to upscale restaurants, providing the perfect opportunity for business lunches or after-work gatherings. Additionally, the location offers convenient access to a variety of retail and entertainment options, ensuring professionals can easily balance work and leisure.

PROPERTY HIGHLIGHTS

- Prime walkable downtown location
- Versatile mixed-use office/retail space
- High visibility for businesses

32770 - 32780 GRAND RIVER AVE, FARMINGTON, MI 48336 // FOR LEASE

LEASE SPACES



LEASE INFORMATION

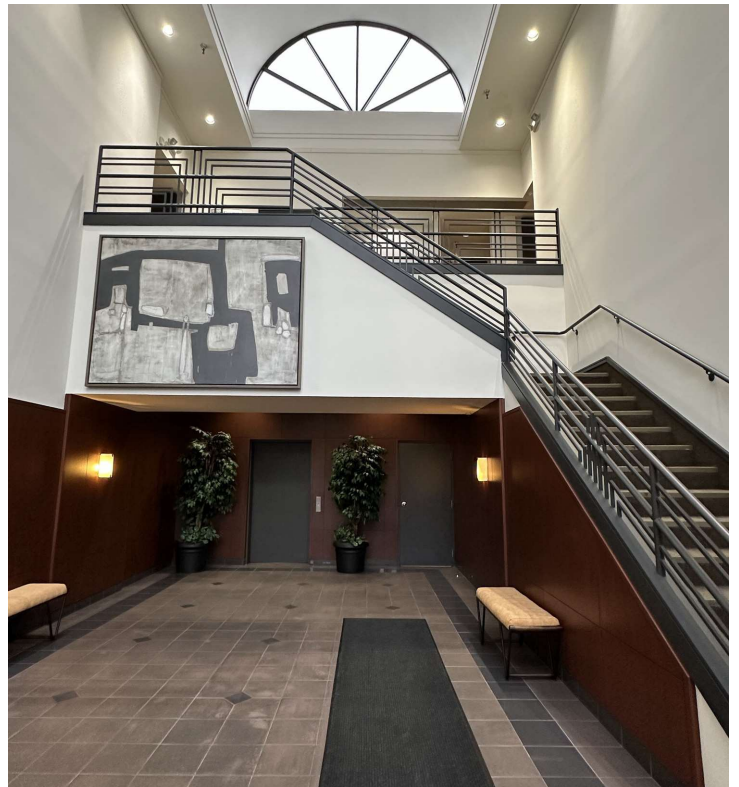
Lease Type:	Gross; NNN	Lease Term:	Negotiable
Total Space:	1,468 - 1,625 SF	Lease Rate:	\$15.00 - \$18.00 SF/yr

AVAILABLE SPACES

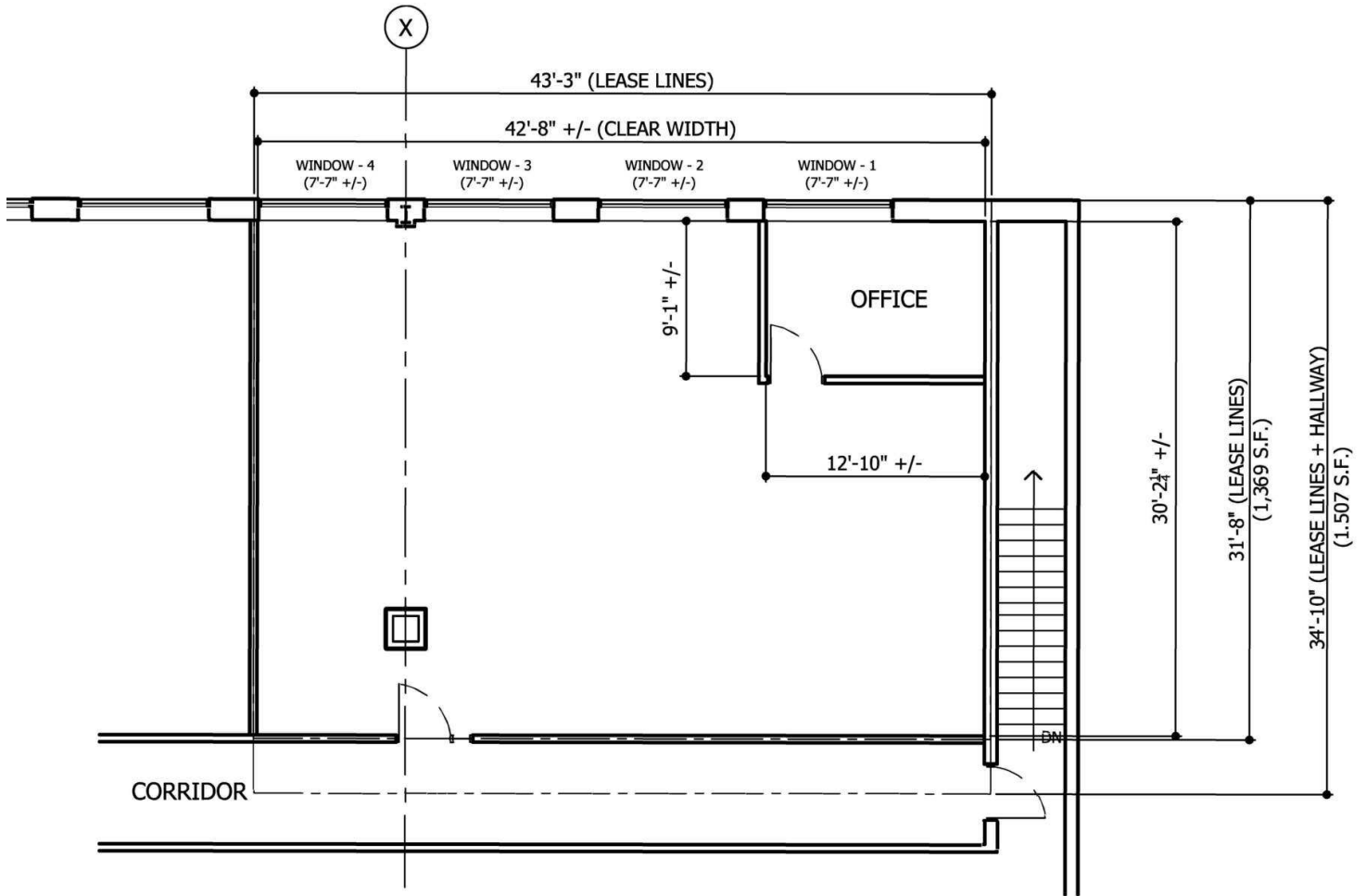
SUITE	TENANT	SIZE (SF)	LEASE TYPE	LEASE RATE	DESCRIPTION
32736 Grand River Ave	Available	1,625 SF	NNN	\$18.00 SF/yr	Retail
32770 Grand River, Suite 206	Available	1,468 SF	Gross	\$15.00 SF/yr	Open Offices

32770 - 32780 GRAND RIVER AVE, FARMINGTON, MI 48336 // FOR LEASE

ADDITIONAL PHOTOS



FLOOR PLANS



SUITE #206 EXISTING FLOOR PLAN
Farmington Village Commons - 32770 - 32780 Grand River Ave., Farmington, MI. 48336
Scale 1/8" = 1' - 0" - DATE: JUNE 20, 2025

32770 Grand River Ave, Suite 206



P.A. COMMERCIAL
Corporate & Investment Real Estate

Dan Blugerman, CCIM SENIOR ASSOCIATE

D: 248.987.5418 | C: 248.987.5418

dan@pacommercial.com

We obtained the information above from sources we believe to be reliable. However, we have not verified its accuracy and make no guarantee, warranty or representation about it. It is submitted subject to the possibility of errors, omissions, change of price, rental or other conditions, prior sale, lease or financing, or withdrawal without notice. We include projections, opinions, assumptions, or estimates for example only, and they may not represent current, past or future performance of the property. You and your tax and legal advisors should conduct your own investigation of the property and transaction.

32770 - 32780 GRAND RIVER AVE, FARMINGTON, MI 48336 // FOR LEASE

RETAILER MAP



Google

Map data ©2024 Imagery ©2024 Airbus, Maxar Technologies

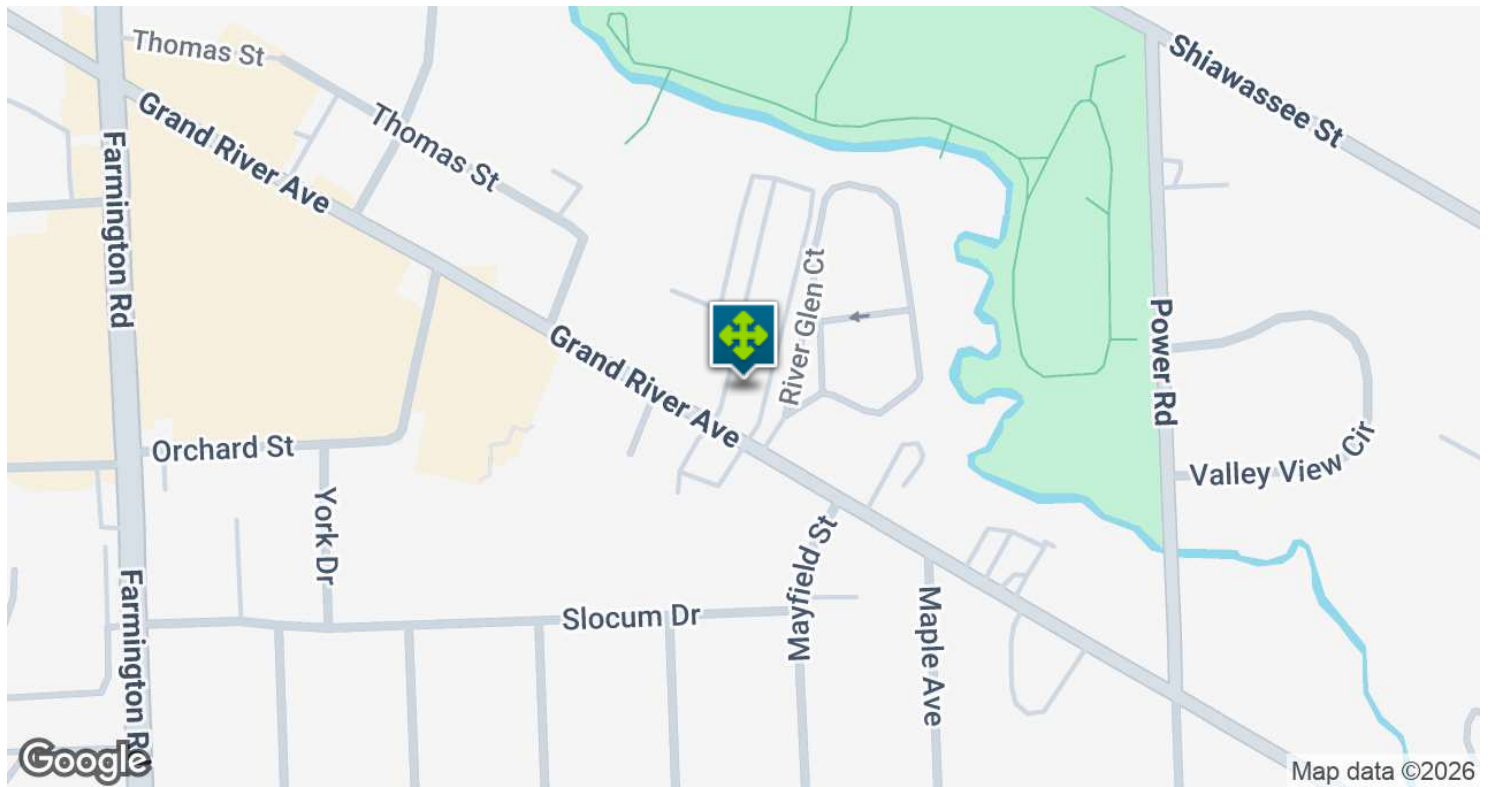


Dan Blugerman, CCIM SENIOR ASSOCIATE
D: 248.987.5418 | C: 248.987.5418
dan@pacommercial.com

We obtained the information above from sources we believe to be reliable. However, we have not verified its accuracy and make no guarantee, warranty or representation about it. It is submitted subject to the possibility of errors, omissions, change of price, rental or other conditions, prior sale, lease or financing, or withdrawal without notice. We include projections, opinions, assumptions, or estimates for example only, and they may not represent current, past or future performance of the property. You and your tax and legal advisors should conduct your own investigation of the property and transaction.

32770 - 32780 GRAND RIVER AVE, FARMINGTON, MI 48336 // FOR LEASE

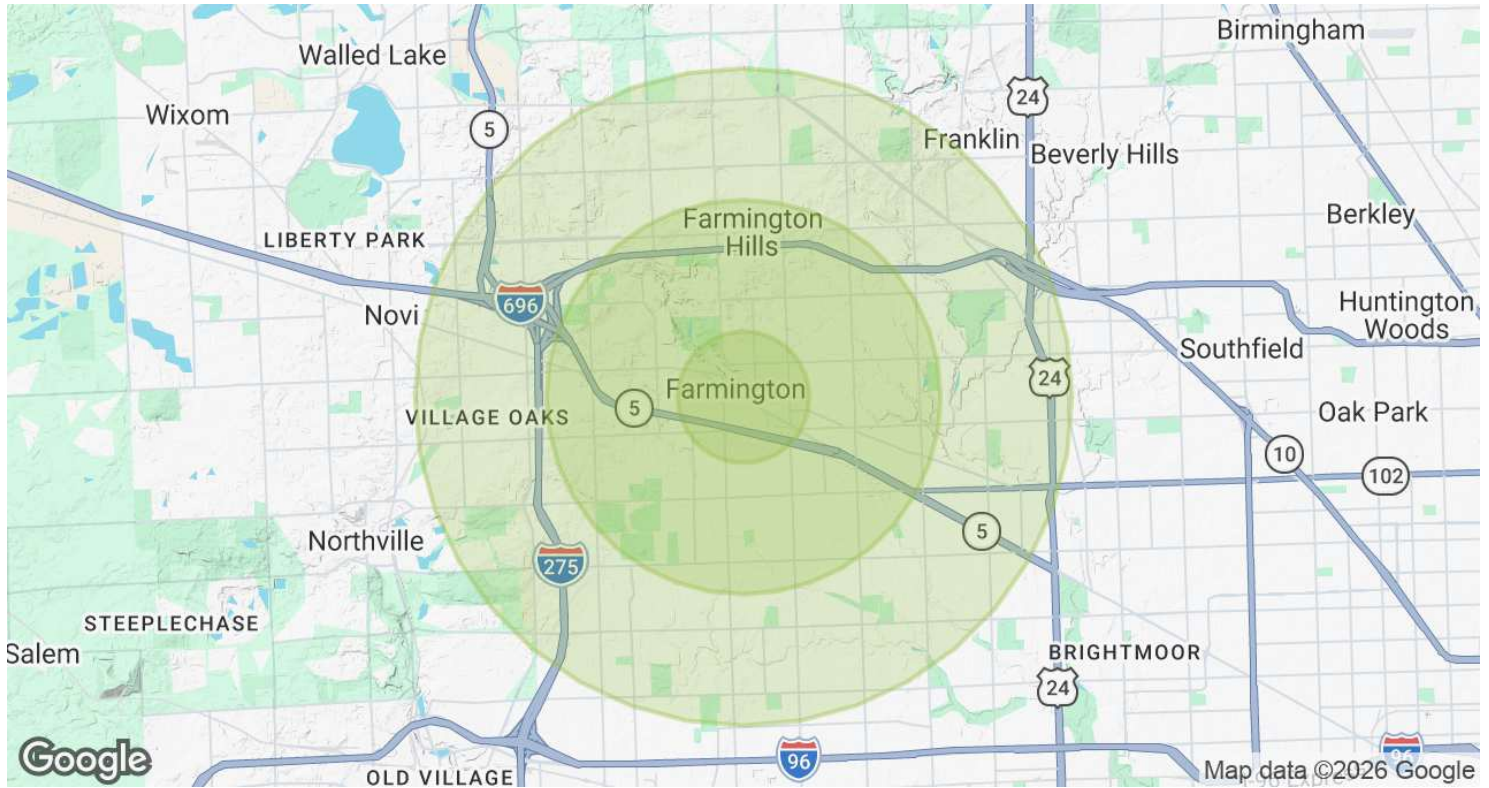
LOCATION MAP



Dan Blugerman, CCIM SENIOR ASSOCIATE
D: 248.987.5418 | C: 248.987.5418
dan@pacommercial.com

We obtained the information above from sources we believe to be reliable. However, we have not verified its accuracy and make no guarantee, warranty or representation about it. It is submitted subject to the possibility of errors, omissions, change of price, rental or other conditions, prior sale, lease or financing, or withdrawal without notice. We include projections, opinions, assumptions, or estimates for example only, and they may not represent current, past or future performance of the property. You and your tax and legal advisors should conduct your own investigation of the property and transaction.

DEMOGRAPHICS MAP & REPORT



POPULATION	1 MILE	3 MILES	5 MILES
Total Population	8,793	76,757	202,903
Average Age	44.0	41.0	42.3
Average Age (Male)	42.3	39.4	41.0
Average Age (Female)	45.0	42.1	43.3
HOUSEHOLDS & INCOME	1 MILE	3 MILES	5 MILES
Total Households	3,921	33,160	83,123
# of Persons per HH	2.2	2.3	2.4
Average HH Income	\$79,793	\$79,888	\$86,403
Average House Value	\$299,716	\$248,661	\$244,292

2020 American Community Survey (ACS)

32770 - 32780 GRAND RIVER AVE, FARMINGTON, MI 48336 // FOR LEASE

CONTACT US



FOR MORE INFORMATION, PLEASE CONTACT:



Dan Blugerman, CCIM
SENIOR ASSOCIATE

D: 248.987.5418

C: 248.987.5418

dan@pacommercial.com

P.A. Commercial

26555 Evergreen Road, Suite 1500
Southfield, MI 48076

P: 248.358.0100

F: 248.358.5300

pacommercial.com

Follow Us!



 **P.A. COMMERCIAL**
Corporate & Investment Real Estate

We obtained the information above from sources we believe to be reliable. However, we have not verified its accuracy and make no guarantee, warranty or representation about it. It is submitted subject to the possibility of errors, omissions, change of price, rental or other conditions, prior sale, lease or financing, or withdrawal without notice. We include projections, opinions, assumptions or estimates for example only, and they may not represent current, past or future performance of the property. You and your tax and legal advisors should conduct your own investigation of the property and transaction.