

208 S WILMINGTON STREET

SUITE 200

FOR LEASE

OFFICE SPACE

DOWNTOWN RALEIGH



2,840 RSF

- Spacious office with a private office/meeting room that allows for a flexible configuration for tenants
- Fully rehabilitated suite featuring the original maple hardwood
- Second floor suite with an exclusive street entrance and kitchenette
- Located in the historic G&S Department Store building
- Downtown location, steps away from all of Raleigh's urban amenities

FOR LEASING AND AVAILABILITY

leasing@empire1792.com | 919-834-8350
Empire Brokerage Services, Inc.



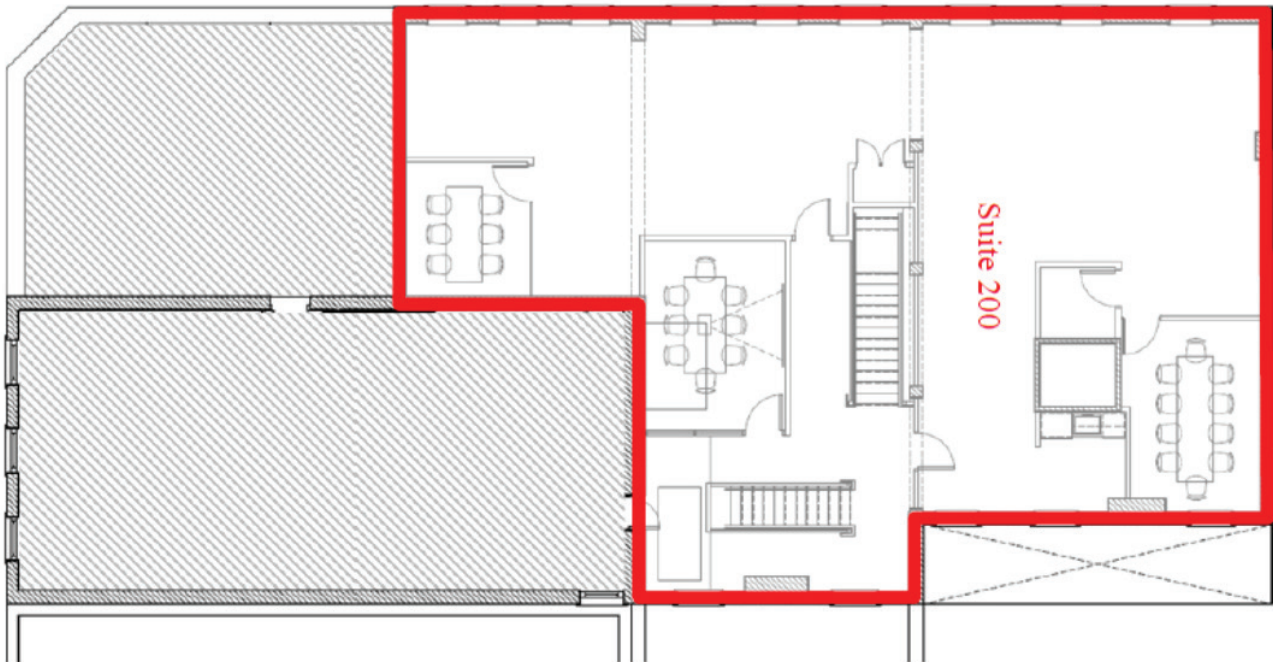
208 S WILMINGTON STREET

SUITE 200

FOR LEASE

OFFICE SPACE

DOWNTOWN RALEIGH



FOR LEASING AND AVAILABILITY

leasing@empire1792.com | 919-834-8350
Empire Brokerage Services, Inc.



208 S WILMINGTON STREET
SUITE 200

FOR LEASE

OFFICE SPACE

DOWNTOWN RALEIGH



FOR LEASING AND AVAILABILITY

leasing@empire1792.com | 919-834-8350
Empire Brokerage Services, Inc.



208 S WILMINGTON STREET

SUITE 200

FOR LEASE

OFFICE SPACE

DOWNTOWN RALEIGH



FOR LEASING AND AVAILABILITY

leasing@empire1792.com | 919-834-8350
Empire Brokerage Services, Inc.



208 S WILMINGTON STREET

SUITE 200

FOR LEASE

OFFICE SPACE

DOWNTOWN RALEIGH



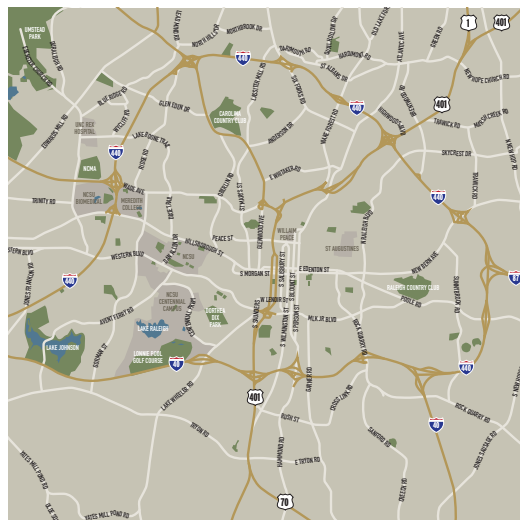
FOR LEASING AND AVAILABILITY

leasing@empire1792.com | 919-834-8350
Empire Brokerage Services, Inc.



OFFICE SPACE

DOWNTOWN RALEIGH



LOCATION

- In the heart of Raleigh's Fayetteville District, in close proximity to Go Raleigh Transit Station, Moore Square, and Fayetteville Street
- Deck parking available within 1 block
- Steps away from restaurant, retail, and entertainment amenities

FOR LEASING AND AVAILABILITY

leasing@empire1792.com | 919-834-8350
Empire Brokerage Services, Inc.

