



PILOT

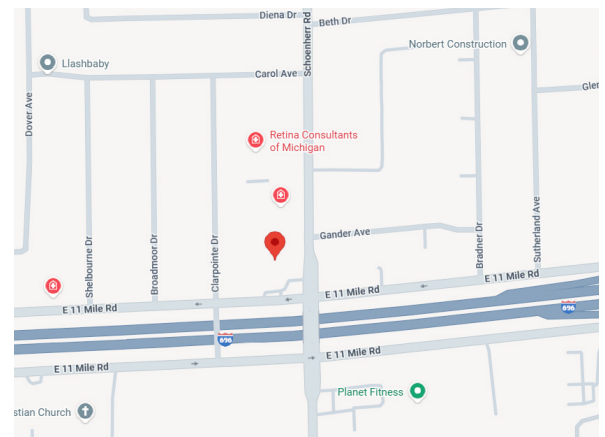
PROPERTY GROUP

**PROFESSIONAL OFFICE/MEDICAL
27041 SCHOENHERR, WARREN, MI 48088**

PROPERTY OVERVIEW:

- Close proximity to I-696.
- Ample parking spaces.
- Schoenherr Road frontage.
- Monument signage available.

Property Type: Office/Medical
 Cross Streets: West side of Schoenherr, North of 11 Mile Rd
 Total Square Footage: 12,000
 Available Square Footage: 3,000
 Zoning: C-2
 Parking Spaces: 62 +/-
 Lease Rate: \$12.00 PSF
 Lease Type: NNN



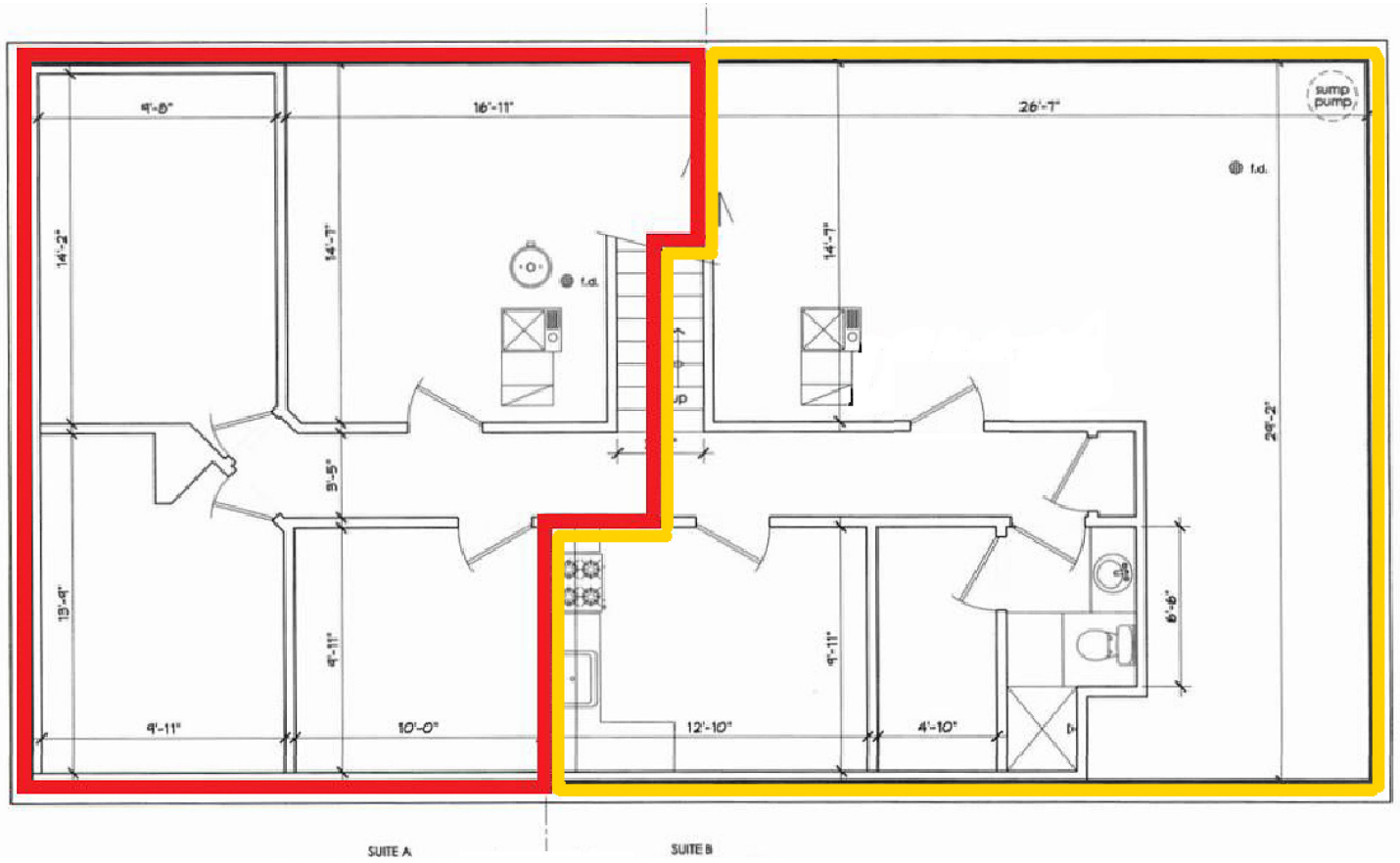
AGENT CONTACT INFO

ANTHONY RUBINO O: 586.254.0900 x101 • C: 586.873.5419 • anthony@pilotpg.com
LUC FLUENT O: 586.254.0900 x127 • C: 586.651.3337 • luc@pilotpg.com

Matching the right people to the right place.

Offices in Sterling Heights and Port Huron to serve you
 586.254.0900 • www.pilotpg.com

LOWER LEVEL FLOOR PLAN



Matching the right people to the right place.

Offices in Sterling Heights and Port Huron to serve you
586.254.0900 • www.pilotpg.com