

Specifications

±4.5 Acres
LOT SIZE

SD3
ZONING

Block 6017.11, Lot 8
BLOCK & LOT

\$8,795.09 (2024)
TAXES

Ideal for Truck / Trailer Parking and
Outdoor Storage
IDEAL USE

Current 8' Fence Permit
Leased with Month-to-Month Tenants
Potential Train Access
Expired Plans for a Waste Transfer
Station
NOTES

2.9 Miles to Route 9
3.2 Miles to Garden State Pkwy Exit 123
ACCESSIBILITY

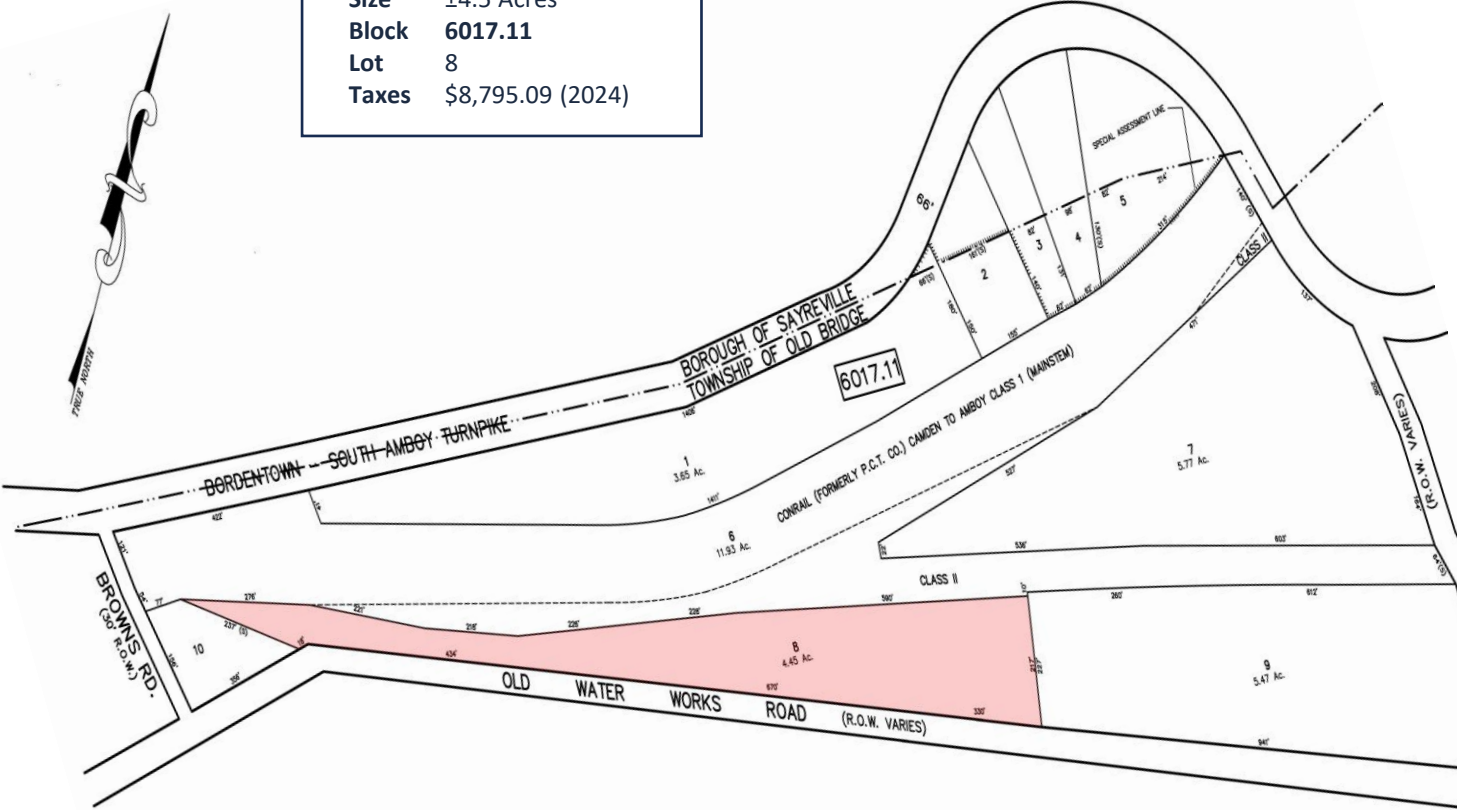
For additional property information or to arrange an inspection,
please contact the exclusive brokers:

John Longo
Senior Director
973.379.6644 x 129
JLongo@blauberg.com

Pat Clancy
Associate
973.379.6644 x 238
PClancy@blauberg.com

555 Water Works Road

Size ±4.5 Acres
Block 6017.11
Lot 8
Taxes \$8,795.09 (2024)

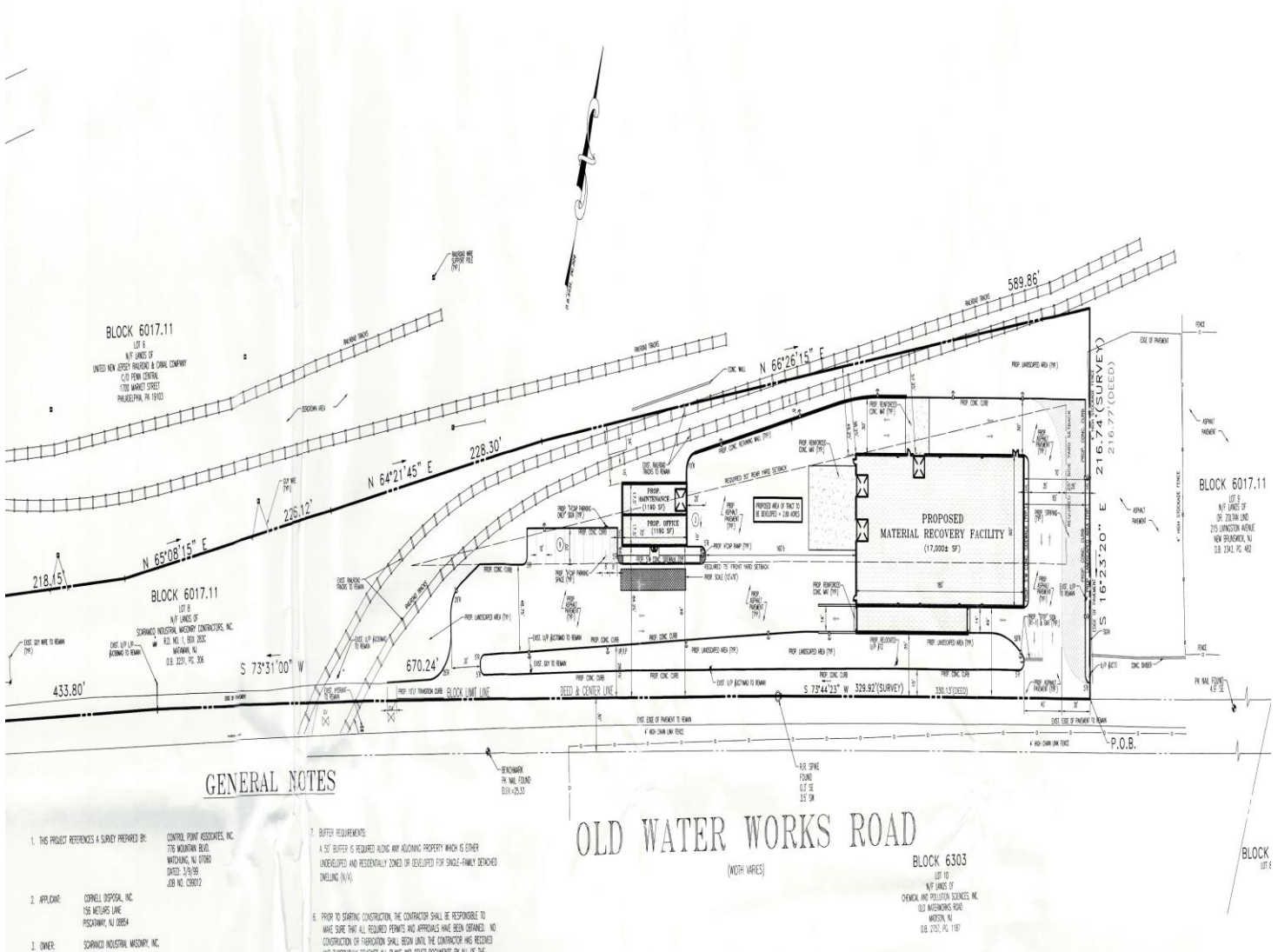


For additional property information or to arrange an inspection,
please contact the exclusive brokers:

John Longo
Senior Director
973.379.6644 x 129
JLongo@blauberg.com

Pat Clancy
Associate
973.379.6644 x 238
PClancy@blauberg.com

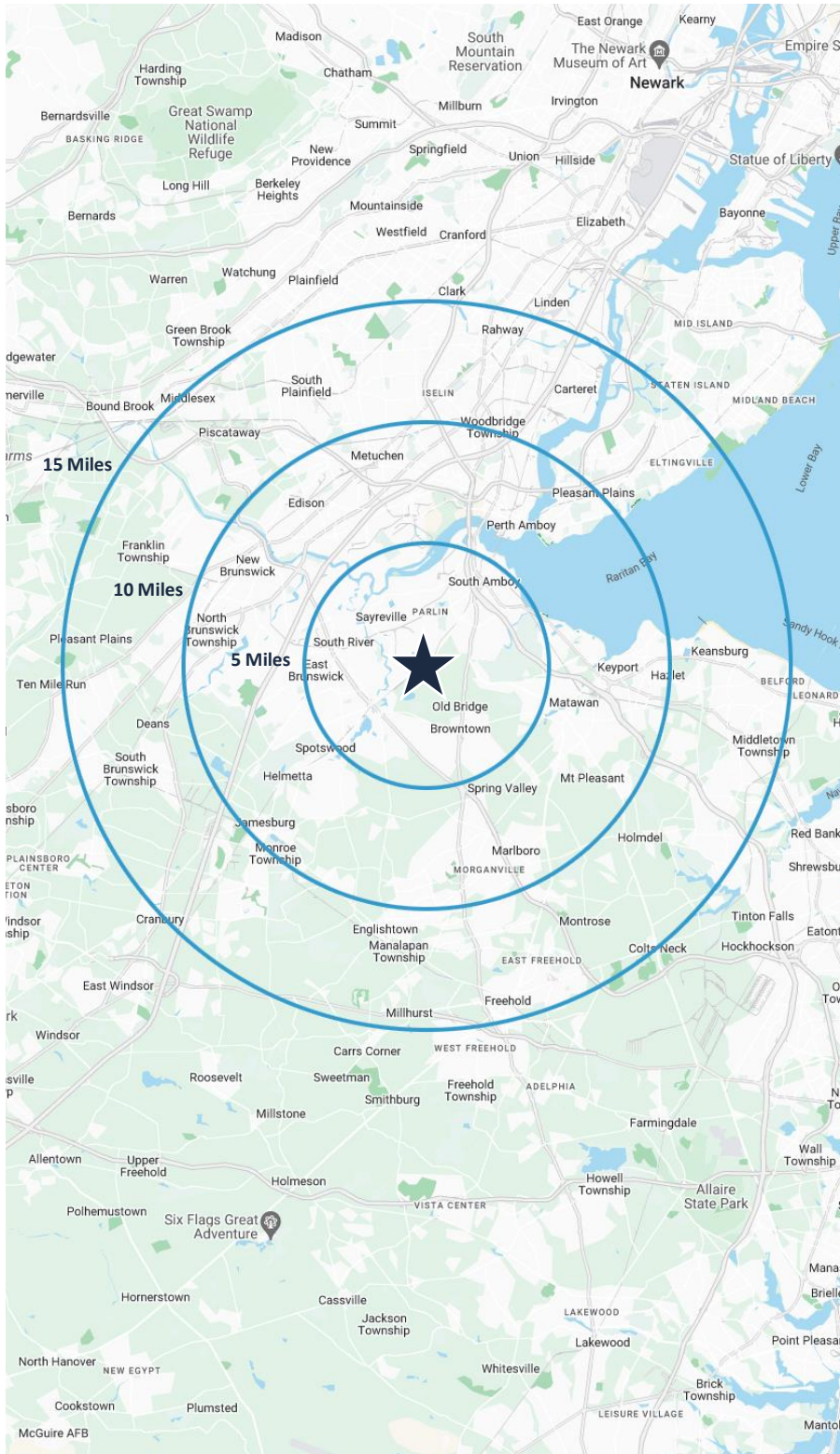
The information contained herein has been obtained from sources considered to be reliable, but no guarantee of its accuracy is made by this company. In addition, no representation is made respecting zoning, condition of title, dimensions, or any matters of a legal or environmental nature. Such matters should be referred to legal counsel for determination. Terms and conditions are subject to change without prior notice. Subject to errors and omissions.



For additional property information or to arrange an inspection,
please contact the exclusive brokers:

John Longo
Senior Director
973.379.6644 x 129
JLongo@blauberg.com

Pat Clancy
Associate
973.379.6644 x 238
PClancy@blauberg.com



5 MILES

- Total Population: 181,385
- Households: 68,575
- Median Household Income: \$112,305
- Average Household Size: 2.6
- Transportation to Work: 99,094
- Labor Force: 147,886

10 MILES

- Total Population: 826,309
- Households: 292,939
- Median Household Income: \$120,687
- Average Household Size: 2.7
- Transportation to Work: 438,492
- Labor Force: 673,135

15 MILES

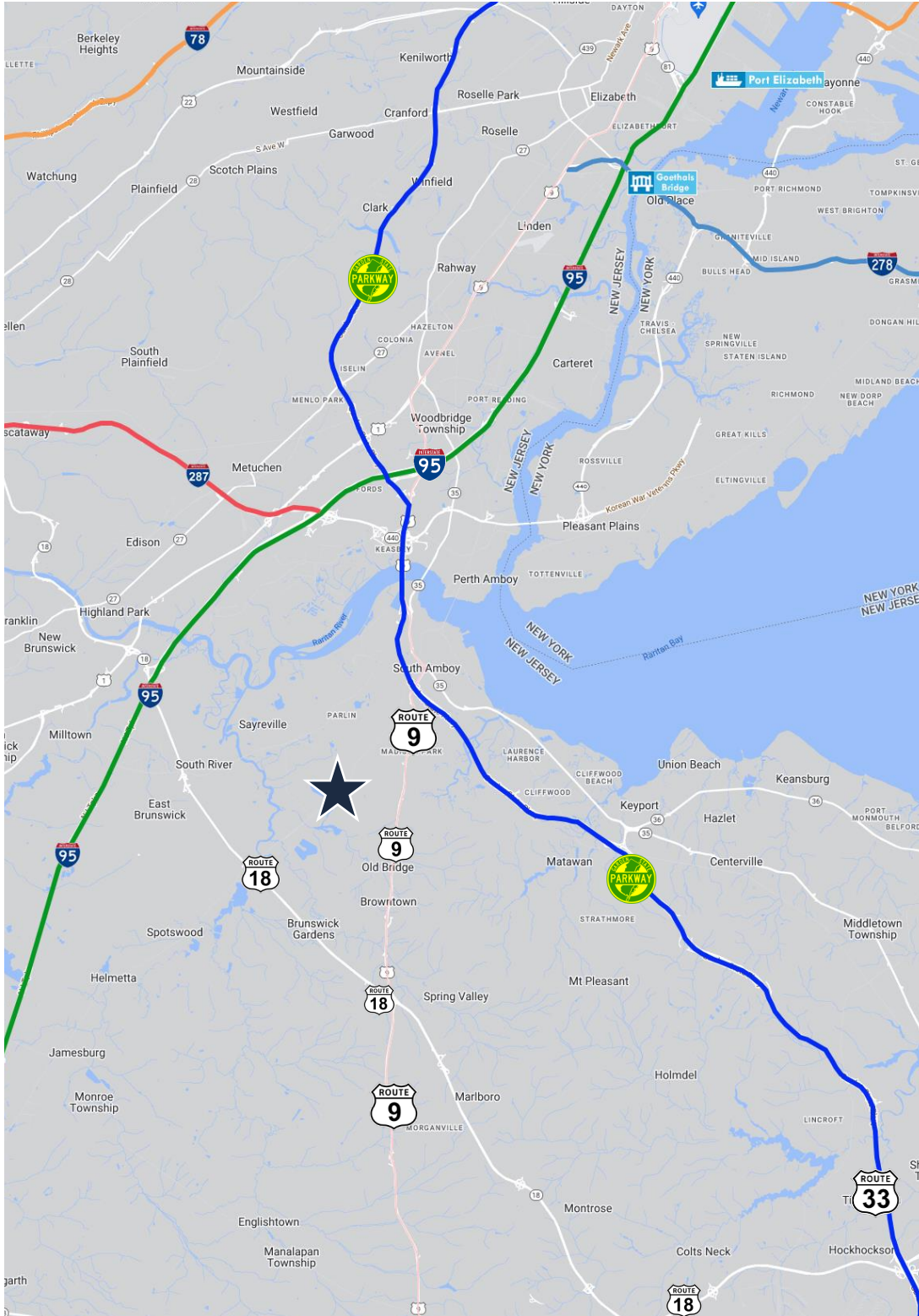
- Total Population: 1.71M
- Households: 614,966
- Median Household Income: \$122,917
- Average Household Size: 2.7
- Transportation to Work: 905,134
- Labor Force: 1.39M

For additional property information or to arrange an inspection,
please contact the exclusive brokers:

John Longo
Senior Director
973.379.6644 x 129
JLongo@blauberg.com

Pat Clancy
Associate
973.379.6644 x 238
PClancy@blauberg.com

FOR SALE OR LEASE | 555 WATER WORKS ROAD | OLD BRIDGE, NJ



ACCESSIBILITY



2.7 MI
Route 18



2.9 MI
Route 9



3.2 MI
GSP Exit 123



6.5 MI
I-95 Exit 9



9.4 MI
I-287

For additional property information or to arrange an inspection,
please contact the exclusive brokers:

John Longo
Senior Director
973.379.6644 x 129
JLongo@blauberg.com

Pat Clancy
Associate
973.379.6644 x 238
PClancy@blauberg.com

The information contained herein has been obtained from sources considered to be reliable, but no guarantee of its accuracy is made by this company. In addition, no representation is made respecting zoning, condition of title, dimensions, or any matters of a legal or environmental nature. Such matters should be referred to legal counsel for determination. Terms and conditions are subject to change without prior notice. Subject to errors and omissions.

