

FOR SALE

UNIQUE MEDICAL CONDO

200 JOSE FIGUERES AVENUE, UNIT 355 | SAN JOSE, CA.

1,356 SQUARE FEET



BUILDING HIGHLIGHTS:

- **Asking Price: \$692,000 (\$510/SF)**
- Pharmacy On-Site
- Cancer Center
- Outpatient Surgery Center
- Private Doctor's Parking Lot
- Ample Visitor Parking
- Building Elevators

EXCELLENT LOCATION:

- At Regional Hospital Center
- Medical Community Surroundings
- High Traffic Counts
- Immediate Proximity to Highway 680 & 101
- Walk to Nearby Retail Services and restaurants

RITCHIE *Commercial*
RESPONSIBLE REAL ESTATE

Please Contact Exclusive Agents:

ROXANA BAKER, CCIM

408.282.8505

DRE Lic. 00794921

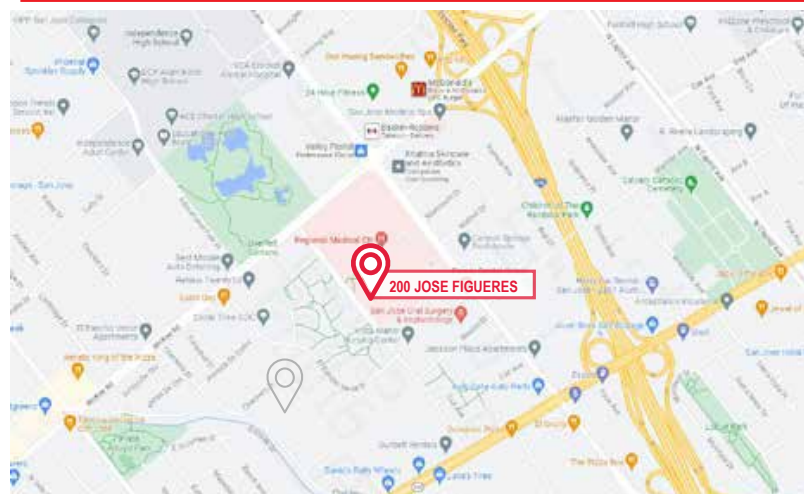
rbaker@ritchiecommercial.com

JANA GLUCKMAN

408.529.7988

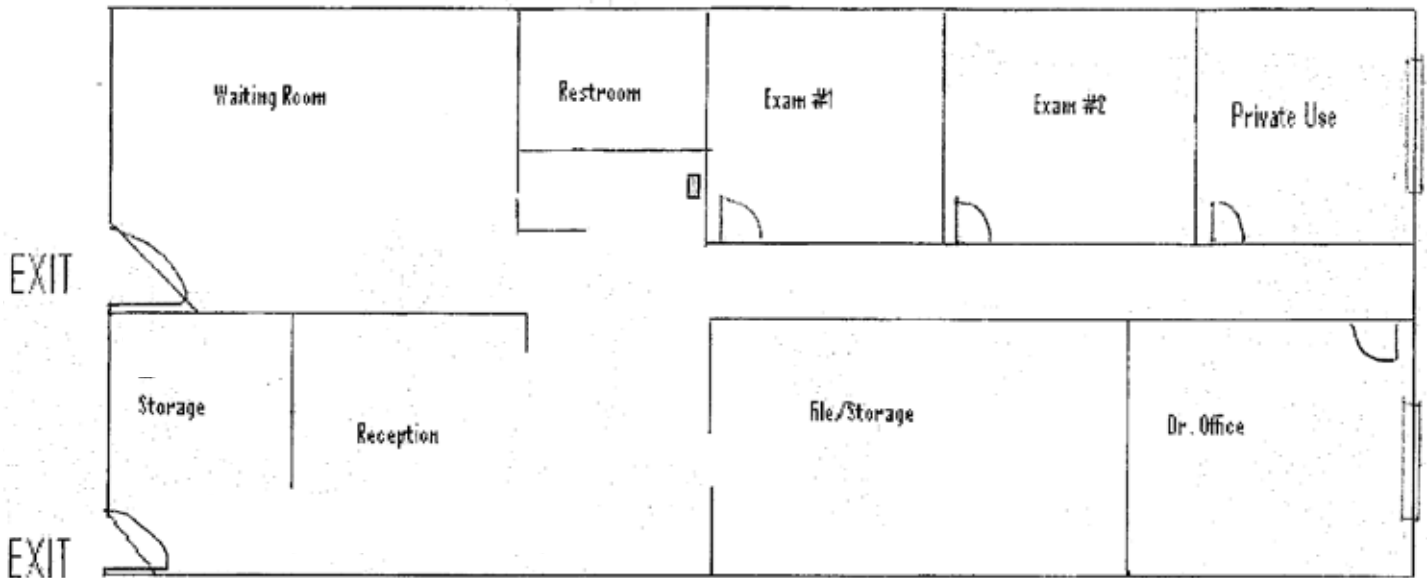
DRE Lic. 00693034

jgluckman@ritchiecommercial.com



FOR SALE
UNIQUE MEDICAL CONDO
200 JOSE FIGUERES AVENUE, UNIT 355 | SAN JOSE , CA.

1,356 SQUARE FEET



FULLY BUILT OUT OFFICE:

- Reception/Storage
- File Storage
- Private Restroom
- Waiting Area
- Doctor's Office
- 3 Exam Rooms

Please Contact Exclusive Agents:

ROXANA BAKER, CCIM

408.282.8505 rbaker@ritchiecommercial.com
DRE Lic. 00794921

JANA GLUCKMAN

408.529.7988 jgluckman@ritchiecommercial.com
DRE Lic. 00693034

RITCHIE *Commercial*
RESPONSIBLE REAL ESTATE

34 W. SANTA CLARA STREET, SAN JOSE, CA 95113
DRE # 01209214 | www.ritchiecommercial.com
1 408.971.2700 f 1 408.971.1600

San Francisco | San Jose | Santa Cruz | Walnut Creek