



# NEW DEVELOPMENT | PRE-LEASING IN IRONDALE

2150 Crestwood Boulevard | Irondale, AL 35210 **CALL FOR RATE**

## AVAILABLE SPACE

Up to 40,000 SF facility

## DETAILS

- Build-to-Suit
- Up to 40,000 SF facility
- Single tenant or multi-tenant
- Light Industrial Zoning, City of Irondale
- Located directly across from I-20 Exit 133
- Interstate visibility
- 3.98 Acre site
- Experienced developer with more than 2.8 million SF delivered since 2020



EXCLUSIVELY OFFERED BY

**JORDAN TUBB, SIOR**

[jordant@grahamcompany.com](mailto:jordant@grahamcompany.com)

205•871•7100 | [GrahamCompany.com](http://GrahamCompany.com)

Information deemed reliable but not guaranteed

TO BE DEVELOPED BY



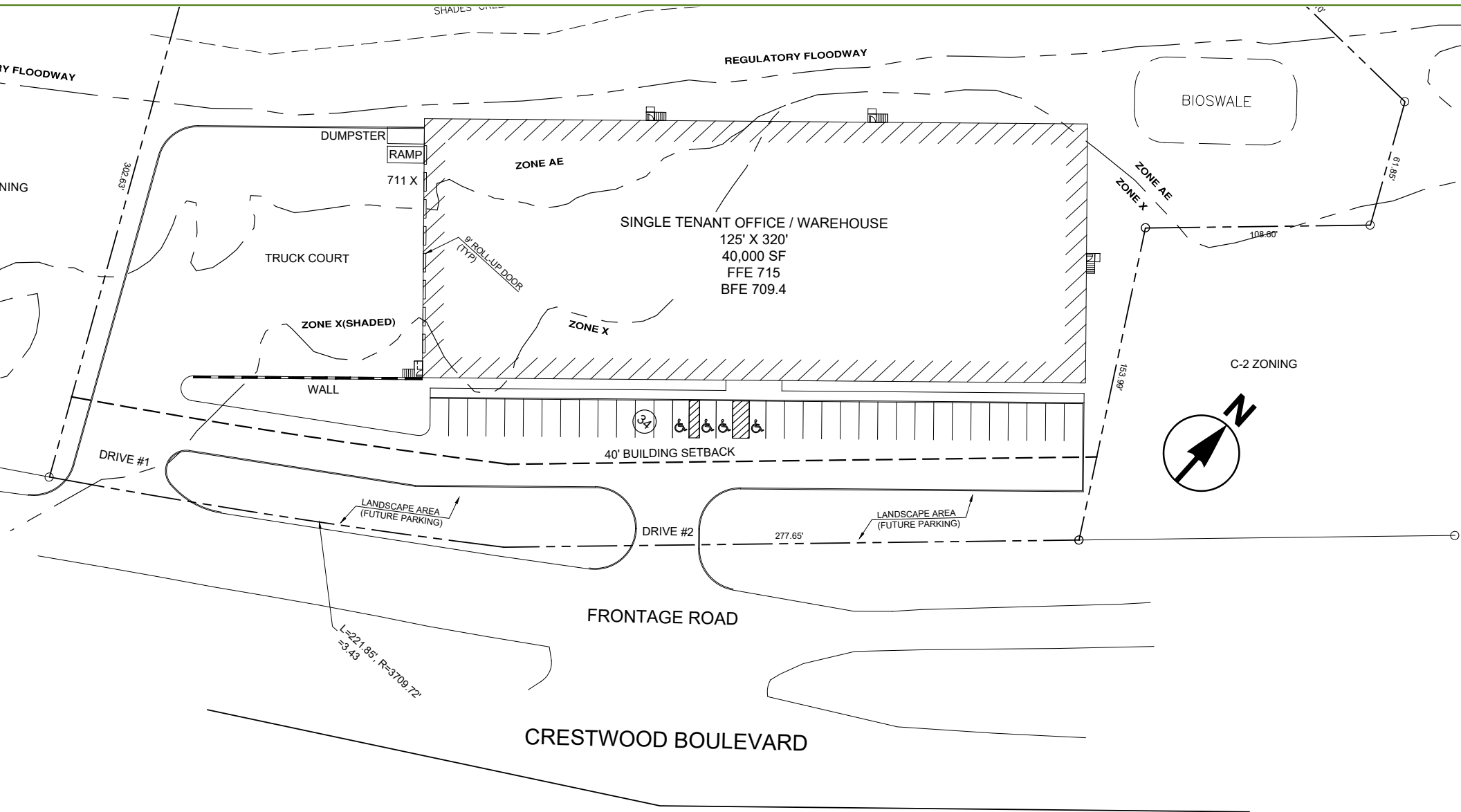
**Graham & Co**

08/28/2020



# NEW DEVELOPMENT | PRE-LEASING IN IRONDALE

2150 Crestwood Boulevard | Irondale, AL 35210 **CALL FOR RATE**



EXCLUSIVELY OFFERED BY

**JORDAN TUBB, SIOR**

[jordant@grahamcompany.com](mailto:jordant@grahamcompany.com)

205•871•7100 | [GrahamCompany.com](http://GrahamCompany.com)

TO BE DEVELOPED BY



**Graham & Co**

Information deemed reliable but not guaranteed