



1270 S LIPAN ST

DENVER, CO 80223



FEATURES

Size: 17,186 SF

Office: 4,916 SF

Site Size: 0.62 AC

Sale Price: \$3,199,000

Clear Height: 22'

Loading: 2 dock high / 1 oversized drive-in

Electrical: 700A; 240V; 3PH (TBV)

Zoning: I-MX-3

Others:

- Fenced outside storage on the north and south end of the building
- Located in the heart of Denver's urban industrial corridor, 1270 S Lipan St offers a rare combination of functionality, modern updates, and unbeatable accessibility.

FOR SALE

CONTACT US:



AVIVA SONENREICH

MANAGING BROKER

720-276-2717

aviva@warehousehotline.com



JOSH OAKLEY

BROKER ASSOCIATE

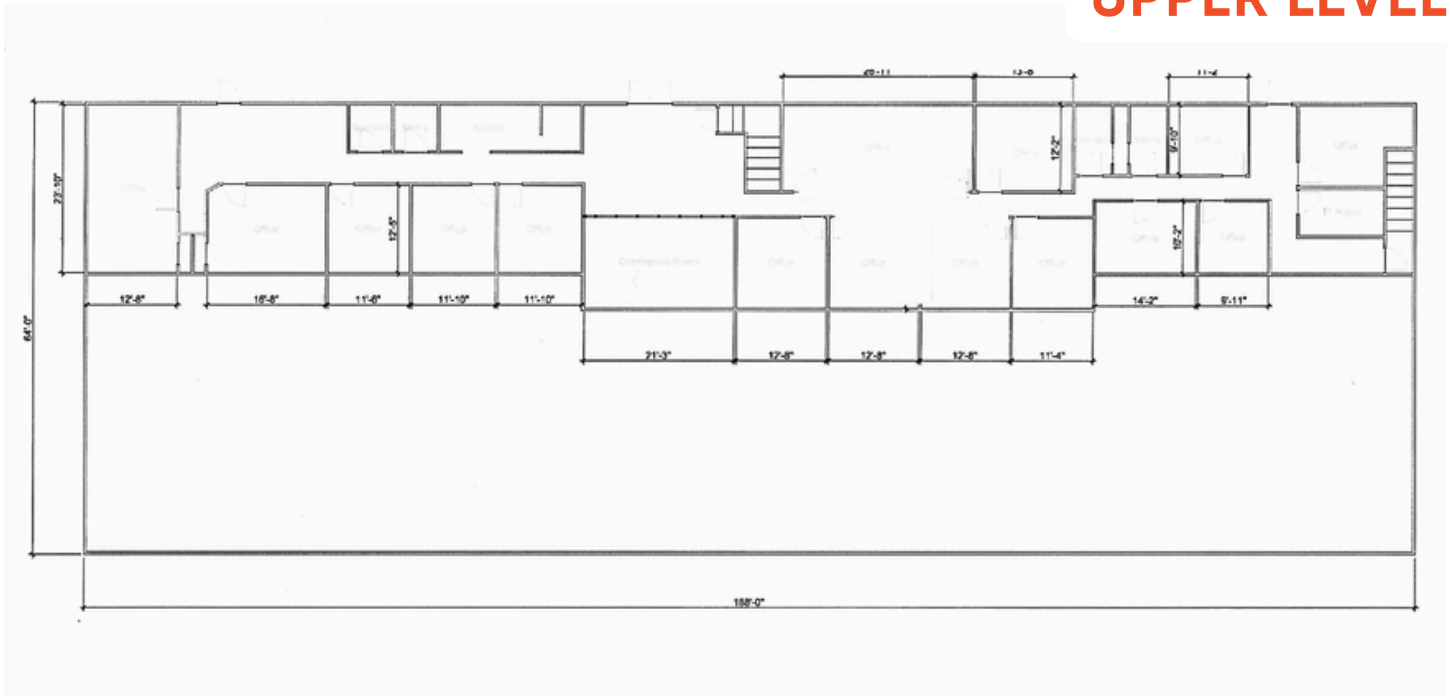
970-274-0077

josh@warehousehotline.com

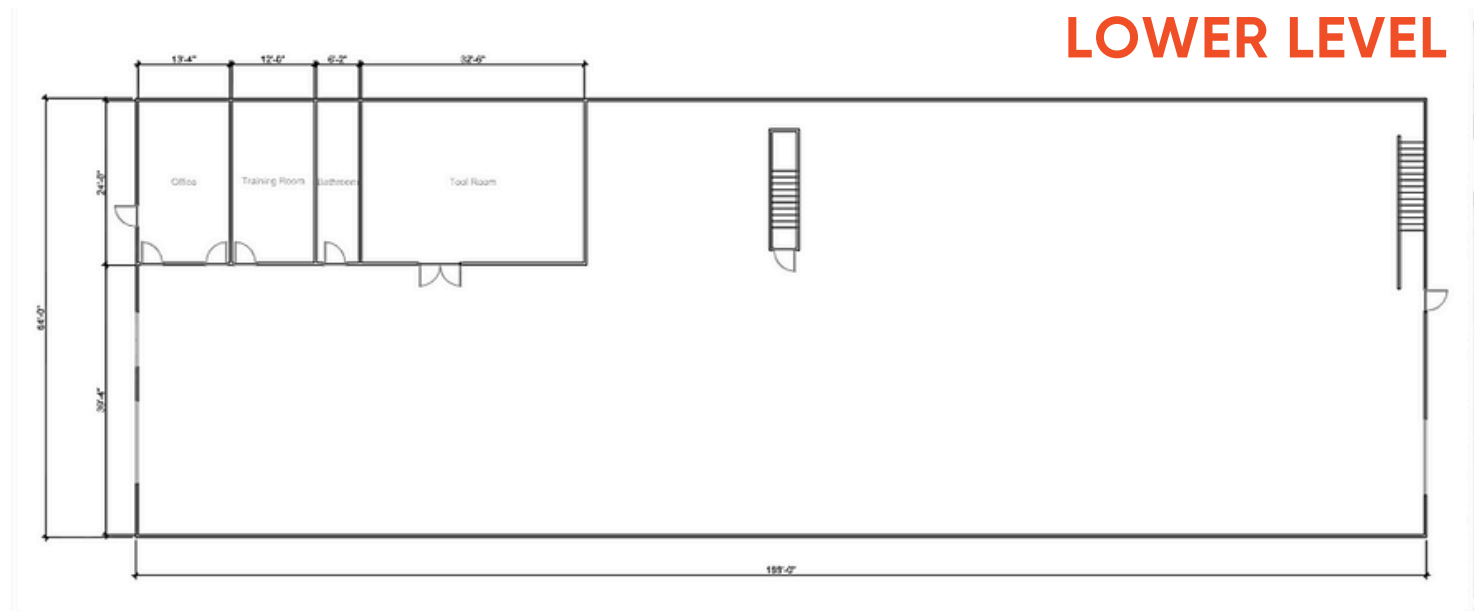
The information contained herein was obtained from sources believed reliable; however, Warehouse Hotline makes no guarantees, warranties or representations as to the completeness or accuracy thereof. The presentation on this property is submitted subject to errors, omission, changes of price, or conditions, prior to sale or lease, or withdrawal without notice.

FLOOR PLAN

UPPER LEVEL



LOWER LEVEL



The floor plans provided are for informational purposes only and may not be to scale. While every effort has been made to ensure their accuracy, we cannot guarantee the completeness or correctness of the information presented. The floor plans are intended to give a general overview of the property layout and should not be relied upon as a definitive representation of the actual space.

CONTACT US:



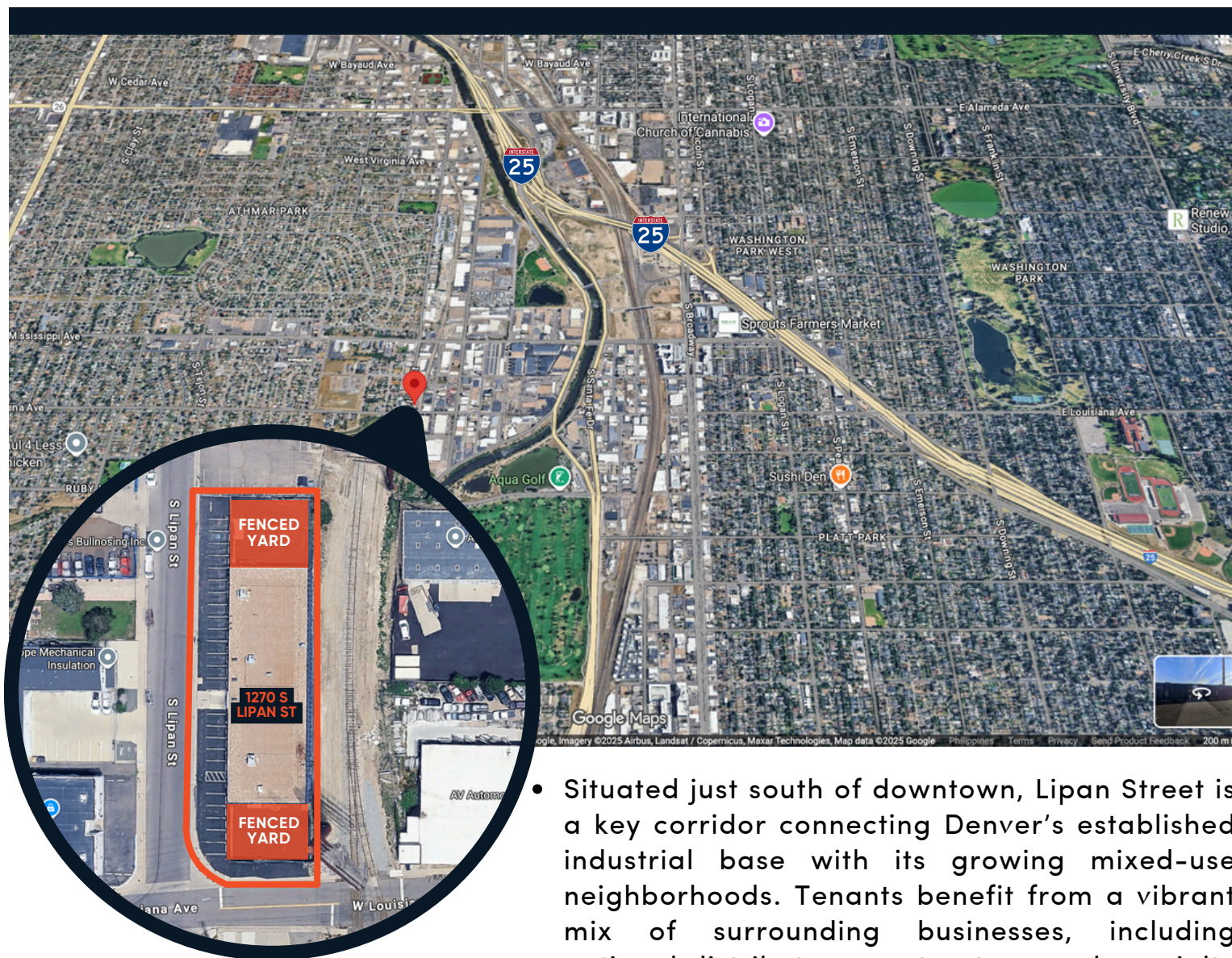
AVIVA SONENREICH
MANAGING BROKER
720-276-2717
aviva@warehousehotline.com



JOSH OAKLEY
BROKER ASSOCIATE
970-274-0077
josh@warehousehotline.com

The information contained herein was obtained from sources believed reliable; however, Warehouse Hotline makes no guarantees, warranties or representations as to the completeness or accuracy thereof. The presentation on this property is submitted subject to errors, omission, changes of price, or conditions, prior to sale or lease, or withdrawal without notice.

LOCATION BENEFITS:



- Situated just south of downtown, Lipan Street is a key corridor connecting Denver's established industrial base with its growing mixed-use neighborhoods. Tenants benefit from a vibrant mix of surrounding businesses, including national distributors, contractors, and specialty trade operators – all within minutes of central Denver and key transportation arteries.

SURROUNDING AREA.

- Adjacent to the Overland Golf Course, surrounded by local dining and retail amenities, and part of a well-established industrial corridor that supports diverse operations.

CONTACT US:



AVIVA SONENREICH
MANAGING BROKER
720-276-2717
aviva@warehousehotline.com



JOSH OAKLEY
BROKER ASSOCIATE
970-274-0077
josh@warehousehotline.com

The information contained herein was obtained from sources believed reliable; however, Warehouse Hotline makes no guarantees, warranties or representations as to the completeness or accuracy thereof. The presentation on this property is submitted subject to errors, omission, changes of price, or conditions, prior to sale or lease, or withdrawal without notice.

MODERN CROSS-DOCK WAREHOUSE FOR SALE IN CENTRAL DENVER



CONTACT US:



AVIVA SONENREICH
MANAGING BROKER
720-276-2717
aviva@warehousehotline.com



JOSH OAKLEY
BROKER ASSOCIATE
970-274-0077
josh@warehousehotline.com

The information contained herein was obtained from sources believed reliable; however, Warehouse Hotline makes no guarantees, warranties or representations as to the completeness or accuracy thereof. The presentation on this property is submitted subject to errors, omission, changes of price, or conditions, prior to sale or lease, or withdrawal without notice.

MODERN CROSS-DOCK WAREHOUSE FOR SALE IN CENTRAL DENVER



CONTACT US:



AVIVA SONENREICH
MANAGING BROKER
720-276-2717
aviva@warehousehotline.com



JOSH OAKLEY
BROKER ASSOCIATE
970-274-0077
josh@warehousehotline.com

The information contained herein was obtained from sources believed reliable; however, Warehouse Hotline makes no guarantees, warranties or representations as to the completeness or accuracy thereof. The presentation on this property is submitted subject to errors, omission, changes of price, or conditions, prior to sale or lease, or withdrawal without notice.