



Deere Park Site

Intersection of US Hwy 167 and Cordell Road
Abbeville, LA 70510



SITE INFORMATION

ACRES AVAILABLE:

23 Acres

PROPERTY TYPE:

Manufacturing - Light Industrial

TERRAIN:

Flat

SUB DIVIDABLE:

Yes

PRIOR/CURRENT USE:

Agricultural

OWNER:

Deere Park Development, Inc

NEAREST MSA:

Lafayette

Population: 474,974

Distance: 0 miles

Lake Charles

Population: 203,883

Distance: 30 miles

COORDINATES:

30.034511, -92.120683

UTILITIES

ELECTRICITY:

SLEMCO

NATURAL GAS:

Centerpoint Energy

WATER:

North Vermilion Water District

SEWER:

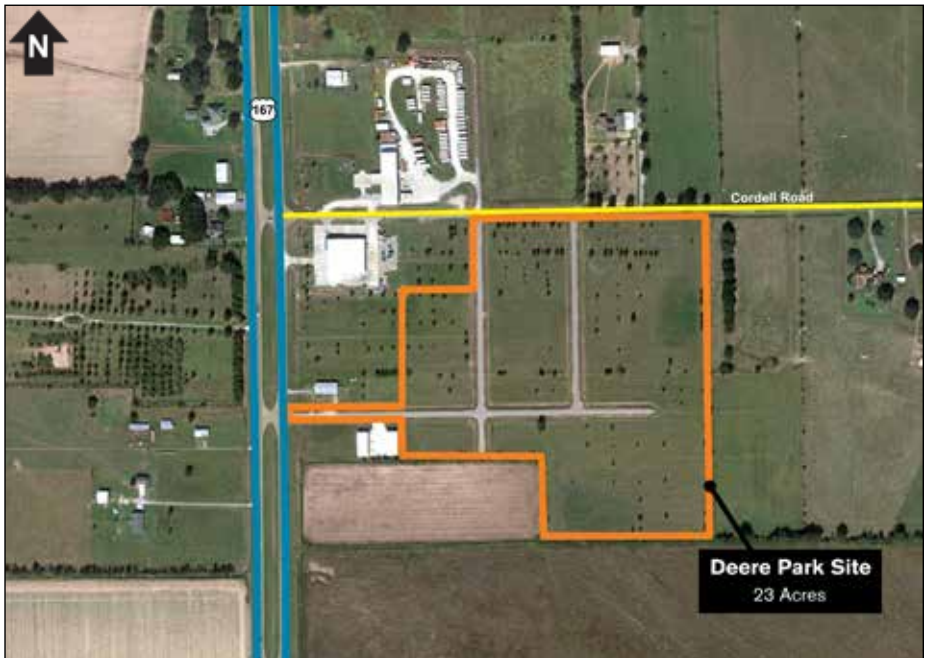
Sewer Plant to be Built

TELECOM:

AT&T

FIBER OPTIC:

AT&T Certified Fiber Ready



TRANSPORTATION LOGISTICS

INTERSTATE:

I-10 and I-49

Distance: 15 miles

HIGHWAY:

US-167

Adjacent

RAIL:

Louisiana and Delta Railroad

Distance: 7 miles

Rail Served: No

AIRPORT:

Lafayette Regional Airport (LFT)

Distance: 18 miles

PORT:

Abbeville Harbor and Terminal District
(Shallow Draft Port)

Distance: 14 miles



Site Located in
Vermilion Parish

Deere Park Site

Intersection of US Hwy 167 and Cordell Road
Abbeville, LA 70510

