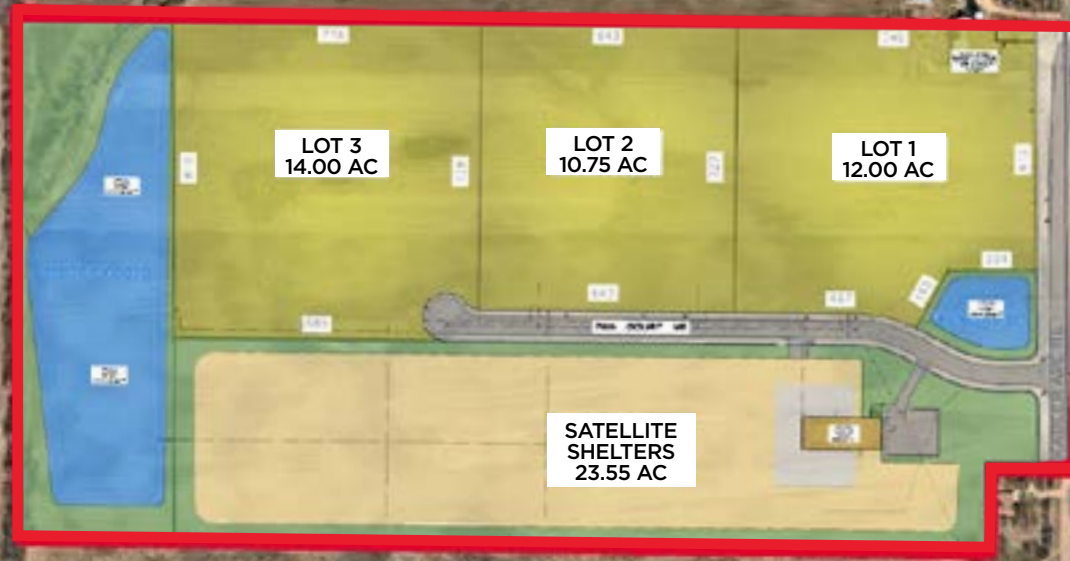


IOS OTSEGO

AVAILABLE LAND

FOR INDUSTRIAL OUTSIDE STORAGE

**INDUSTRIAL
STRENGTH**



BTS OUTDOOR STORAGE OPPORTUNITY

OTSEGO OUTDOOR STORAGE PARK
KADLER AVE NE & 80TH ST NE, OTSEGO, MN



IOS OTSEGO

OTSEGO INDUSTRIAL OUTDOOR STORAGE PARK

KADLER AVE NE & 80TH ST NE, OTSEGO, MN

SITE INFO

- 36.75 acres
- No paving required
- No minimum building size
(with city approval)
- All utilities and water detention in place
- Divisible down to 10-12 acres
- BTS available up to 700,000 SF
(Owner will sell land)
- First class outside storage park
- 6 minutes (3 miles) to I-94 interchange
- The Greener Storage and Distribution Solution



IOS OTSEGO

OTSEGO INDUSTRIAL OUTDOOR STORAGE PARK

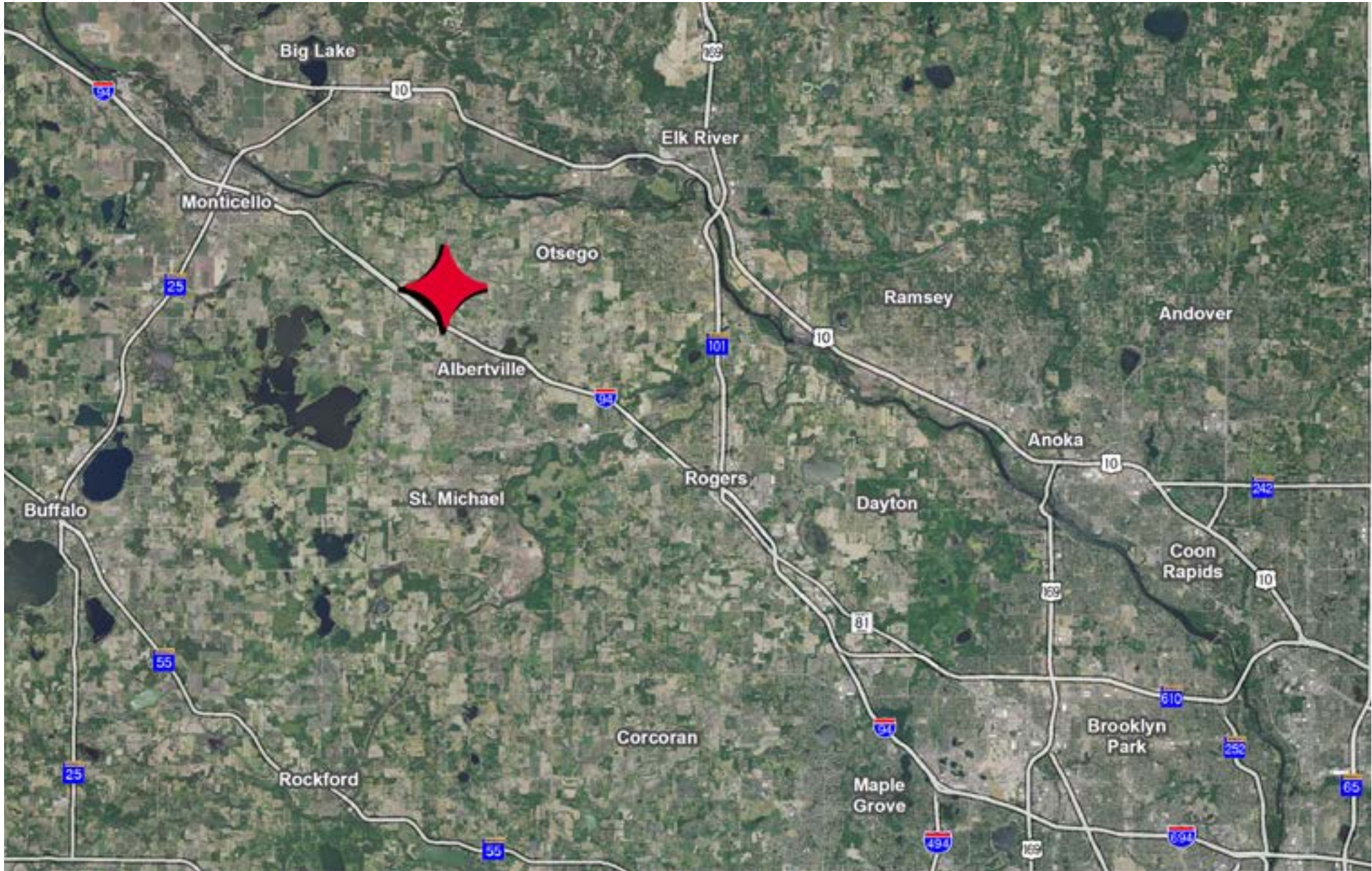
KADLER AVE NE & 80TH ST NE, OTSEGO, MN



IOS OTSEGO

OTSEGO INDUSTRIAL OUTDOOR STORAGE PARK

KADLER AVE NE & 80TH ST NE, OTSEGO, MN





FOR MORE INFORMATION, CONTACT:

JON YANTA, SIOR, CCIM

Executive Director

+1 952 820 8734

jon.yanta@cushwake.com

BRENT MASICA

Executive Director

+1 952 893 8231

brent.masica@cushwake.com

JAKE KELLY

Senior Associate

+1 952 465 3303

jake.kelly@cushwake.com

2024 Cushman & Wakefield. All rights reserved. The material in this presentation has been prepared solely for information purposes, and is strictly confidential. Any disclosure, use, copying or circulation of this presentation (or the information contained within it) is strictly prohibited, unless you have obtained Cushman & Wakefield's prior written consent. The views expressed in this presentation are the views of the author and do not necessarily reflect the views of Cushman & Wakefield. Neither this presentation nor any part of it shall form the basis of, or be relied upon in connection with any offer, or act as an inducement to enter into any contract or commitment whatsoever. NO REPRESENTATION OR WARRANTY IS GIVEN, EXPRESS OR IMPLIED, AS TO THE ACCURACY OF THE INFORMATION CONTAINED WITHIN THIS PRESENTATION, AND CUSHMAN & WAKEFIELD IS UNDER NO OBLIGATION TO SUBSEQUENTLY CORRECT IT IN THE EVENT OF ERRORS.

